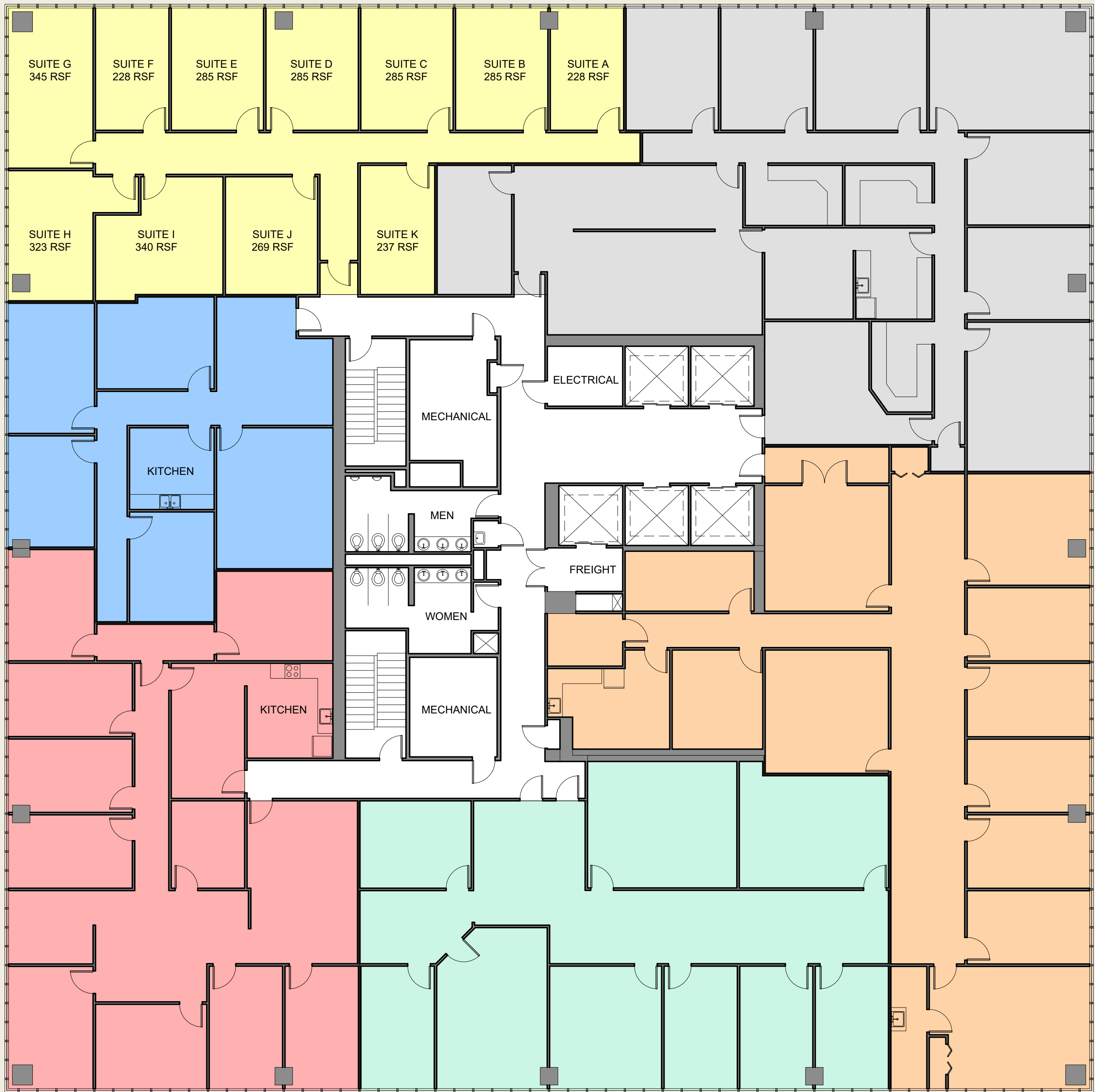


# Orleans TOWER

LASALLE ST.

SUITE 1780 3,110 RSF  
 A - OCCUPIED B - OCCUPIED C - OCCUPIED D - OCCUPIED E - OCCUPIED F - OCCUPIED G - OCCUPIED H - OCCUPIED I - AVAILABLE J - OCCUPIED K - AVAILABLE

OCCUPIED  
 SUITE 1700  
 4,429 RSF



OCCUPIED  
 SUITE 1770  
 1,832 RSF

OCCUPIED  
 SUITE 1750  
 3,388 RSF

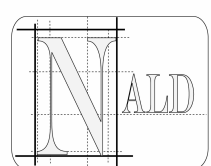
AVAILABLE  
 SUITE 1710  
 4,112 RSF

AVAILABLE  
 SUITE 1720  
 3,311 RSF

LOYOLA AVE.

CALL FOR MORE LEASING INFORMATION: 504-681-3437

1340 POYDRAS  
 NEW ORLEANS, LA 70112



NORTH AMERICAN LAND DEVELOPMENT



www.propertyone.com

JACK M. GORDON  
 Commercial Leasing and Sales

4141 Veterans Blvd., Suite 300  
 Metairie, LA 70002

17TH FLOOR: SUITES  
 1700-1780

\* NOT FOR CONSTRUCTION/ FOR CALCULATION PURPOSES ONLY  
 \* THE FLOOR PLAN ILLUSTRATION IS NOT THE FINAL PROGRAM AND CHANGES MAY BE MADE TO FULFILL THE TENANTS NEEDS.  
 \* SUITE EXPANSION/MERGE ALLOWED IF NEEDED OR POSSIBLE