

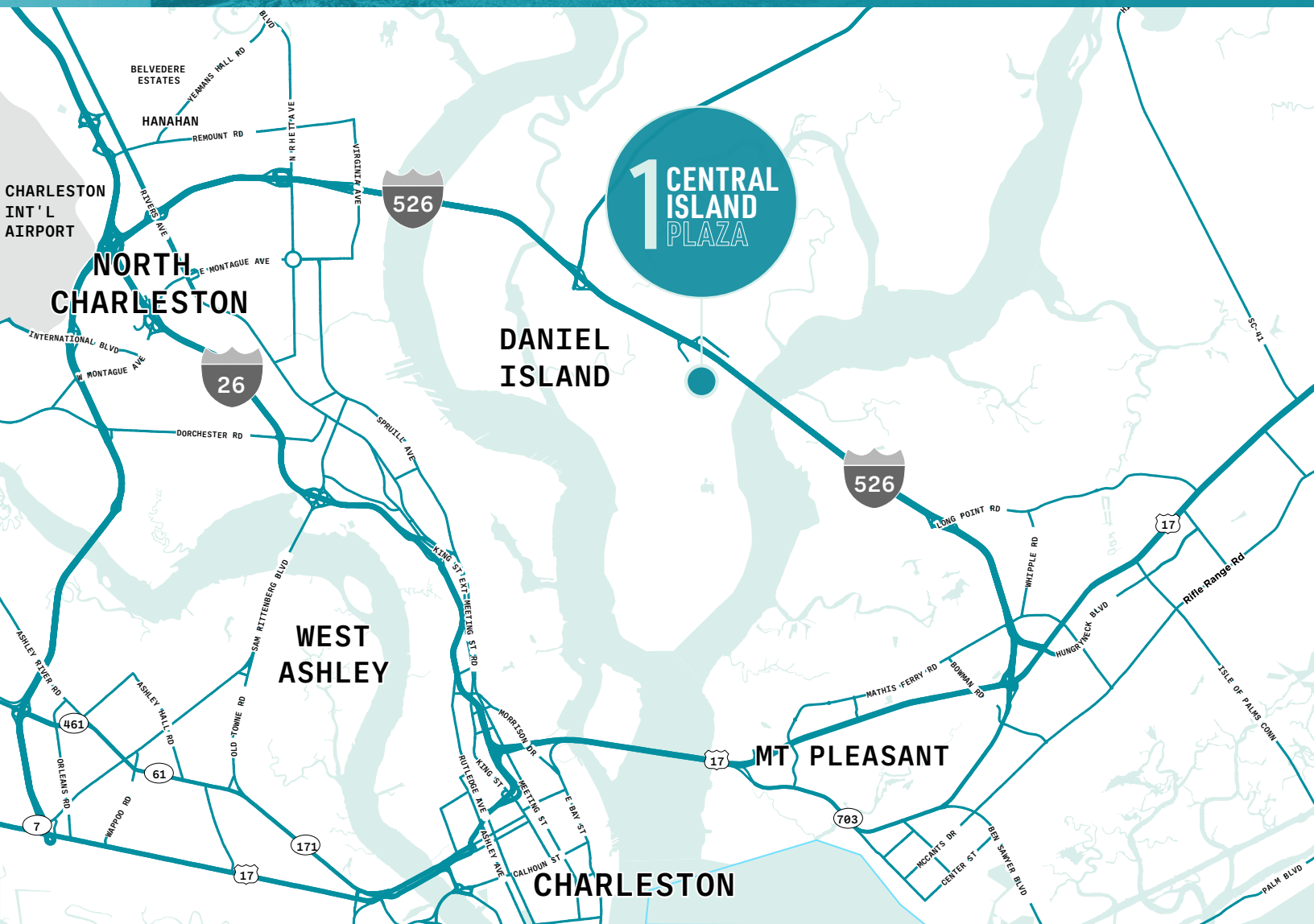
1 CENTRAL ISLAND PLAZA



115 CENTRAL ISLAND STREET, DANIEL ISLAND, SC

115

1 Central Island Plaza is a premier, Class A office property on Daniel Island. Located directly off I-526 and in the heart of Daniel Island's Town Center, 1 Central Island Plaza is only a few steps away from numerous restaurants, fitness centers and several outdoor gathering areas. The available spaces are well suited for any company looking for plug n' play space in an amazing location on Daniel Island. Daniel Island is easily accessible from I-526 making it a great location for tenants currently located in Mount Pleasant or North Charleston who want their employees to have an abundance of nearby amenities.



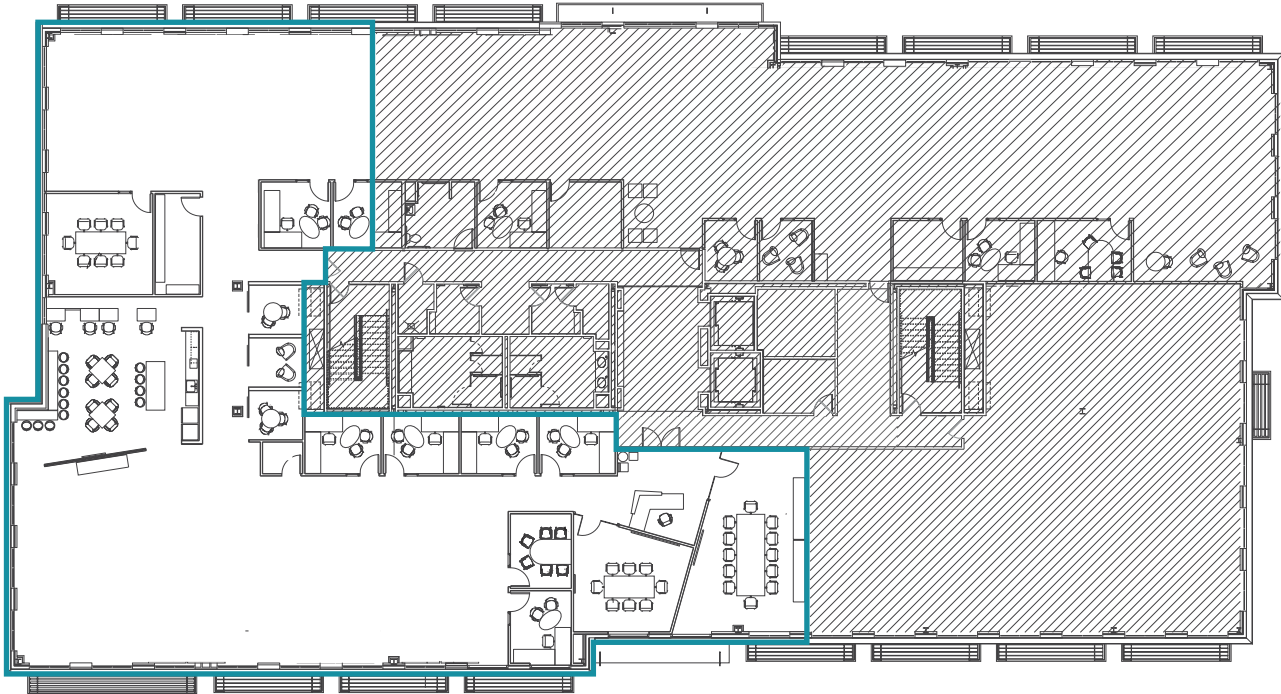
PROPERTY HIGHLIGHTS

- ±4,000 – 20,046 RSF Available
- Move-in Ready Furniture Available
- Free Surface Parking
- Walking Distance to Numerous Restaurants and High-end Retail
- Building Signage Available



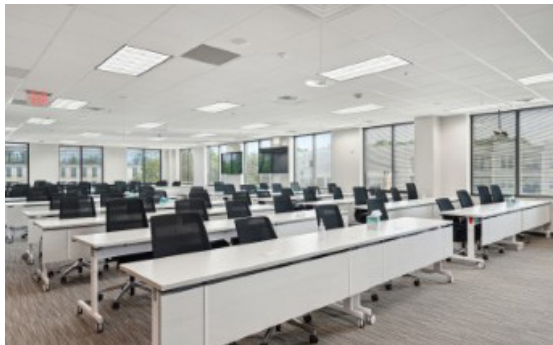
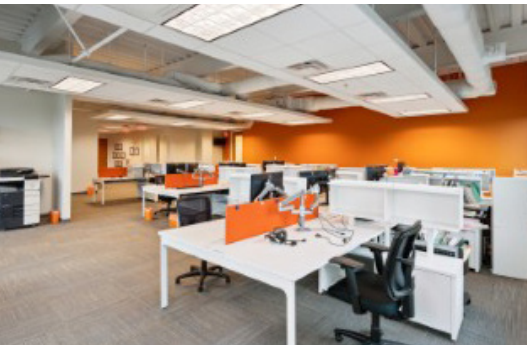
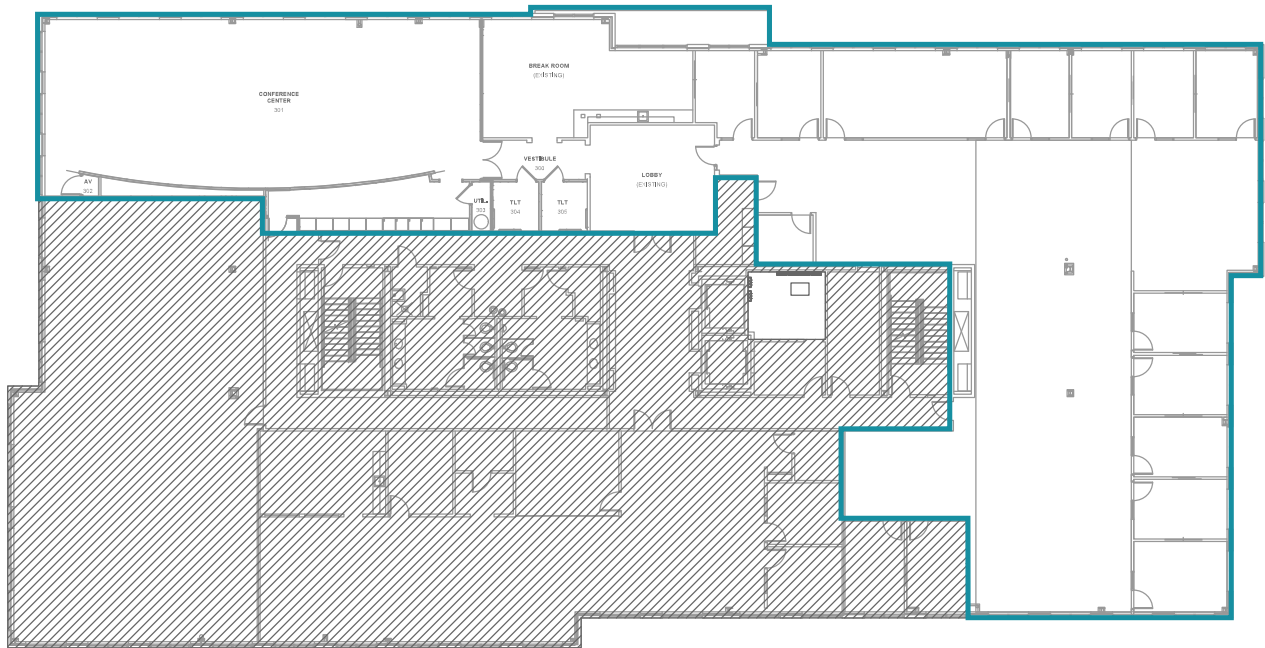
2ND FLOOR VACANCY

SUITE 201
8,945 RSF



3RD FLOOR VACANCY

SUITE 300
±4,000 UP TO
11,101 RSF





1 CENTRAL ISLAND PLAZA

115 CENTRAL ISLAND STREET, DANIEL ISLAND, SC

FOR MORE INFORMATION, PLEASE CONTACT:

NICK TANANA

Senior Director

+1 843 724 0109

nick.tanana@cushwake.com

BRADY DASHIELL

Senior Associate

+1 843 724 0106

brady.dashiell@cushwake.com



1 CENTRAL ISLAND PLAZA
115 CENTRAL ISLAND STREET, SUITE 175
CHARLESTON, SC 29492
WWW.CUSHMANWAKEFIELD.COM