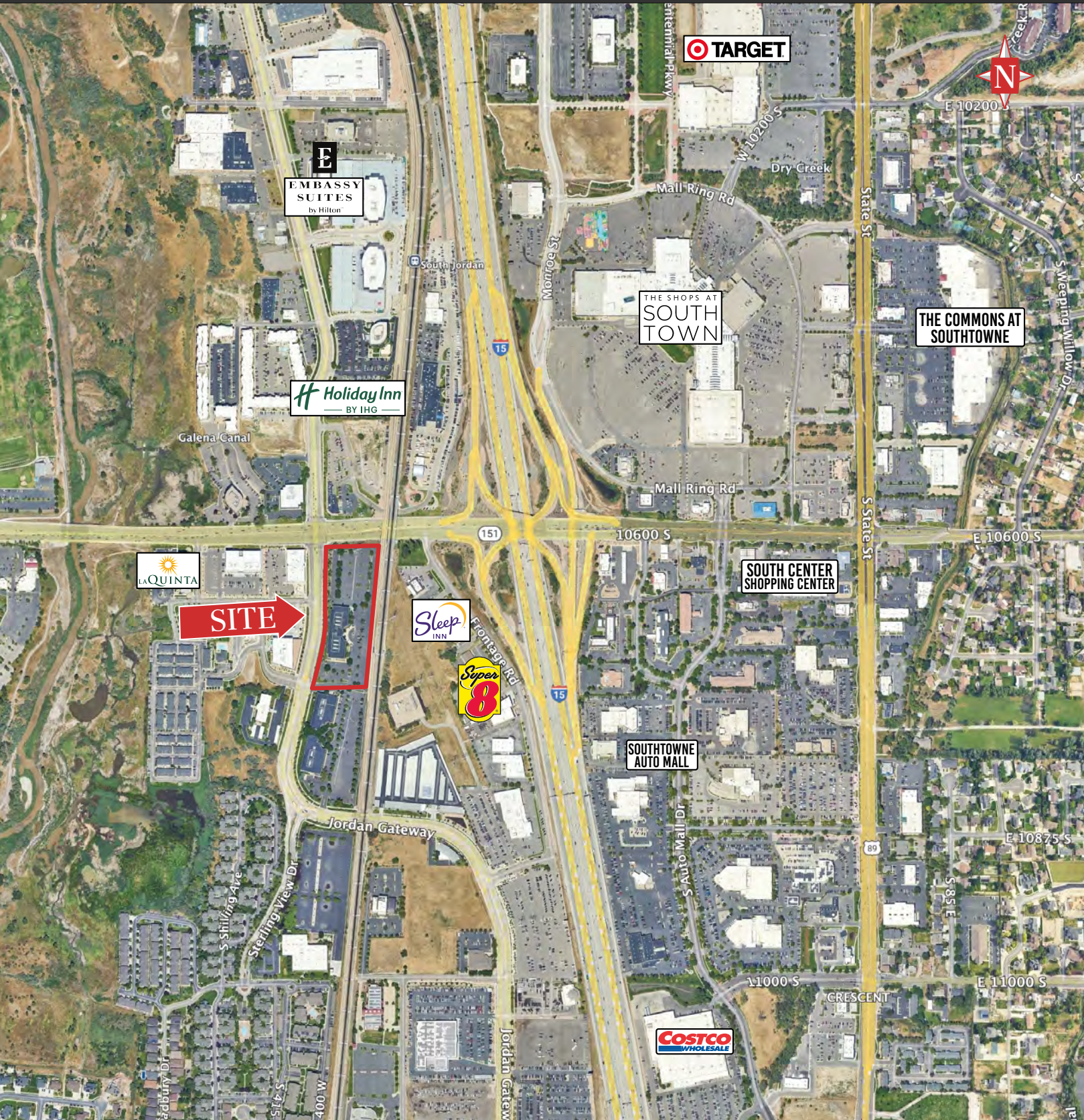


Stratus Professional Center

10619 South Jordan Gateway, Ste 300
South Jordan, UT 84095



OFFICE | FOR SUBLEASE

PROPERTY INFORMATION

- > **Suite 300: \$10.00 PSF /mo**, Full Service
- > 14,363 RSF (divisible)
- > Third Floor Suite
- > Conference room, break room
- > Open office space and private offices
- > Some fixtures and furniture can be negotiated in the lease
- > Great central location
- > Easy I-15 freeway access
- > Parking ratio 5/1000
- > Sublease expires December 31, 2027

DEMOGRAPHICS

POPULATION	1 MILE	3 MILE	5 MILE
2025 EST	6,103	104,611	309,771
2030 PROJ	6,226	105,214	310,445
HOUSEHOLDS			
2025 EST	2,590	37,456	105,823
2030 PROJ	2,710	38,642	108,738
INCOME			
2025 AVG	\$116,212	\$136,616	\$148,762
2025 MED	\$100,210	\$108,188	\$113,703

Source: ESRI 2025

THIRD FLOOR OFFICE

