

**PROJECT DATA**

ZONING: LIGHT INDUSTRIAL (L1)

OCCUPANCY - OAD:

WAREHOUSE: 1964 / 500 ± 4

OFFICE: 336 SF / 100 ± 5

TOTAL OCCUPANT LOAD: 9 PERSONS

FLOOR AREA:

WAREHOUSE: 1964 SQUARE FEET

OFFICE: 336 SQUARE FEET

TOTAL TENANT AREA: 2300 SQUARE FEET

CONSTRUCTION TYPE: III-B, UNPROTECTED

SPEAKER SYSTEM: NO

ARCHITECT OF RECORD:

RICK GLASSMAN, aia, lead ap (bd+c)

THE CUTTFISH STUDIO, LLC

3007 LEAWOOD DRIVE

MARIETTA, GA 30067

(404) 386-9276

rick@thecuttlefishstudio.com

PROJECT MANAGER:

JAY WEBB

(770) 608-8863

**APPLICABLE BUILDING CODES:**

INTERNATIONAL BUILDING CODE 2006 WITH GEORGIA AMENDMENTS

NATIONAL ELECTRIC CODE / 2005

INTERNATIONAL GAS CODE / 2006 WITH GEORGIA AMENDMENTS

INTERNATIONAL MECHANICAL CODE / 2006 WITH GEORGIA AMENDMENTS

INTERNATIONAL PLUMBING CODE / 2006 WITH GEORGIA AMENDMENTS

INTERNATIONAL ENERGY CONSERVATION CODE / 2006

GEORGIA ACCESSIBILITY CODE / 1991 / GAC 28-3-10

NFA 101-LIFE SAFETY CODE 2000

INTERNATIONAL FIRE CODE / 2006

INTERNATIONAL RESIDENTIAL CODE / 2006 WITH GEORGIA AMENDMENTS

**FLOOR PLAN LEGEND**

⊙ EXIT SIGN ABOVE

⊕ EMERGENCY LIGHT FIXTURE

⊕ COMBINATION EXIT SIGN AND EMERGENCY LIGHT FIXTURE

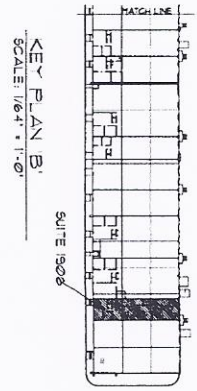
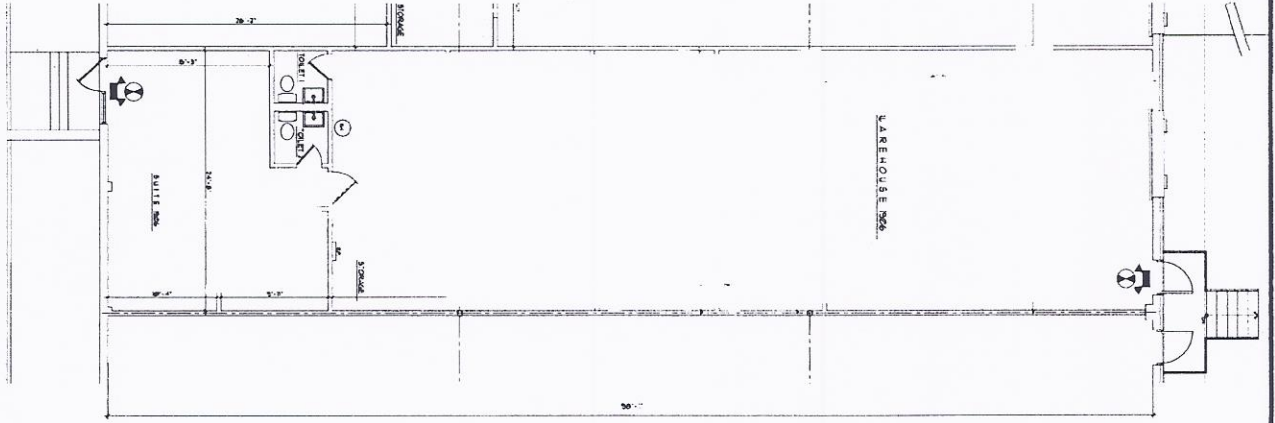
E.P. EXISTING ELECTRICAL PANEL

**GENERAL NOTES:**

- EXISTING CONSTRUCTION SHALL REMAIN. NO NEW PARTITIONING OR OTHER ALTERATION OR CONSTRUCTION IS PROPOSED.
- TENANT IS TO OCCUPY THE EXISTING STRUCTURE WITH NO PROPOSED MODIFICATIONS.
- EXISTING LIGHTING AND SWITCHING SHALL REMAIN.
- VERIFY THE EXISTING DERIVING SHALL HAS A ONE HOUR RATED.
- EXISTING UTILITY OUTLETS SHALL REMAIN.
- NO STRUCTURAL OR USE CHANGES TO BE MADE.
- THIS DRAWING IS NOT RELEASED FOR CONSTRUCTION OR "COMPETING WITH AN" OR ALL THE CURRENT CODES OR REGULATIONS CURRENTLY ENFORCED BY THE AUTHORITIES HAVING JURISDICTION.

EXISTING FLOOR PLAN

SCALE: 3/16" = 1'-0"



NOT RELEASED FOR CONSTRUCTION

PROJECT TITLE	EXISTING FLOOR PLAN SUITES 1906	
JOB NUMBER	2013-00	
DRAWN BY	CHUCKED R.G.	
SCALE	AS SHOWN	
DATE	04-25-13	
REV	DATE	REVISION
1		
SHEET 1 OF 1000 - E.P.		

SUITES 1870 - 1906  
 Forge Street  
 Tucker, Georgia 30084



**The Cuttlefish Studio**

Rick Glassman, aia, lead ap (bd+c)

3007 Leawood Drive  
 Marietta, GA 30067  
 (404) 386-9276  
 rick@thecuttlefishstudio.com

A-16