

292236 Nose Creek Boulevard, Unit 19

Rocky View County, Alberta

Evan Renwick

Vice President

+1 403 750 0807

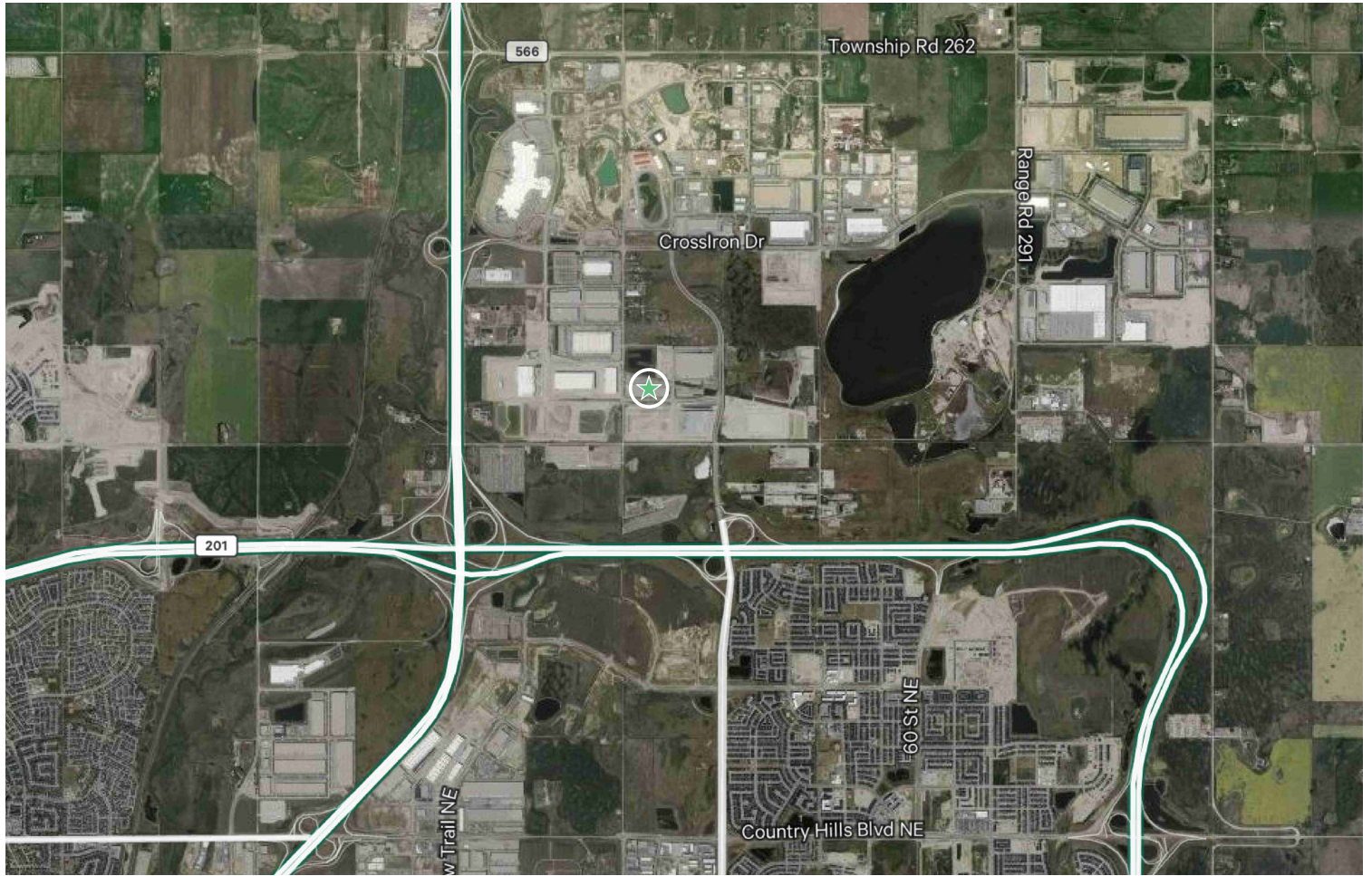
evan.renwick@cbre.com

Flexible Warehousing - 10,000 - 20,000 SF



292236 Nose Creek Boulevard, Unit 19

Rocky View County, Alberta | TOM OEO



Zoning	DC-99, Cell C
Rentable Area	10,000 - 20,000 SF
Loading	2 x Dedicated Dock Doors
Ceiling Height	36'
Trailer Parking Stalls	Negotiable
Power	Shared Power
Lease Rate	Floor Space: \$18.50 - \$21.00 PSF Pallet Positions: \$11.50 - \$13.00 per pallet/month Warehouse Services: \$6.00 - \$6.50 material handling or \$50.00 per hour
Availability	Immediately

Property Highlights

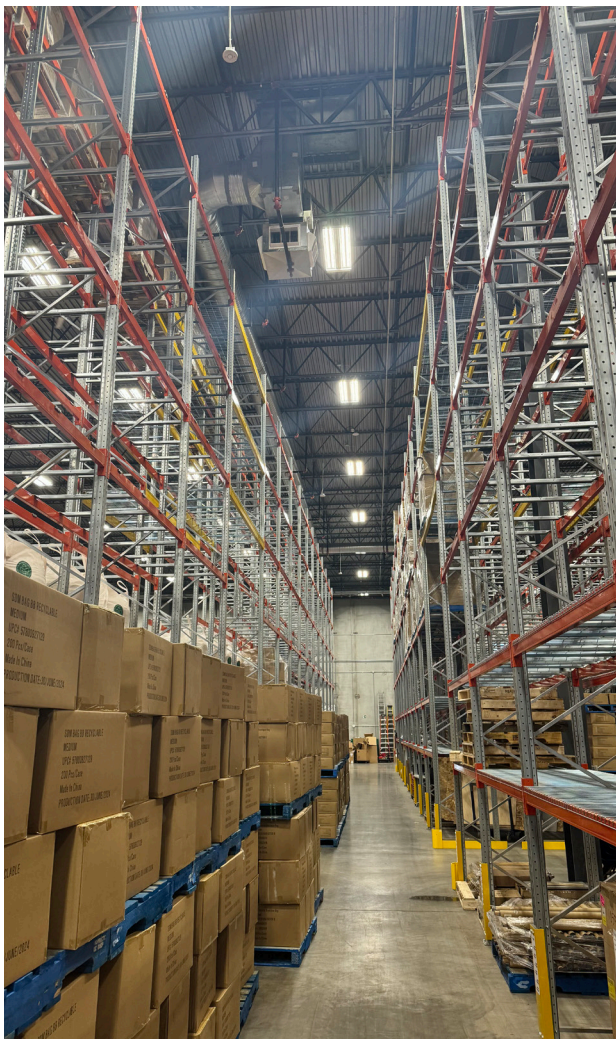
- + Multi-tenant, cross-dock building for general warehouse, distribution and logistics
- + The availability is a shared warehouse space, not demised. Tenant to be provided a dedicated area
- + 6-24 month term with a month-month option to follow initial term
- + 12,320 SF of indoor, ground level storage with racking available
- + Up to 612 racked pallet positions

Included in Agreement

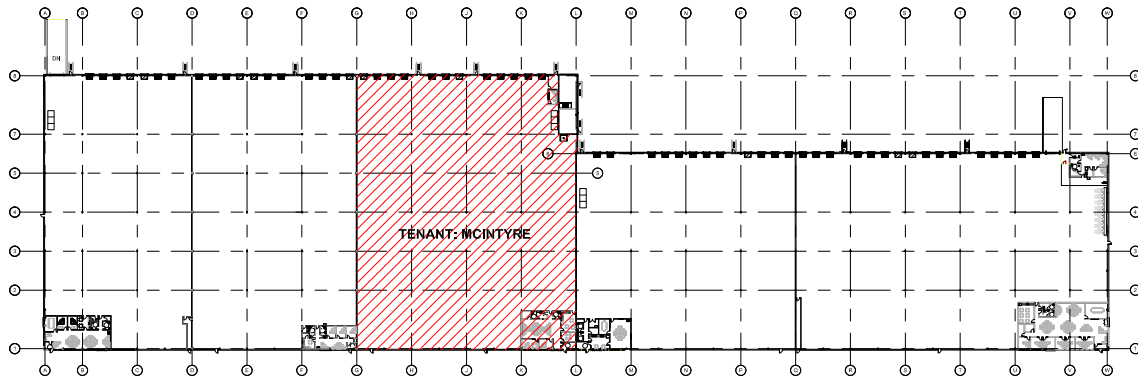
- + 2 dedicated dock doors, all utilities, Wi-Fi network in warehouse area, washroom facilities

Available Services

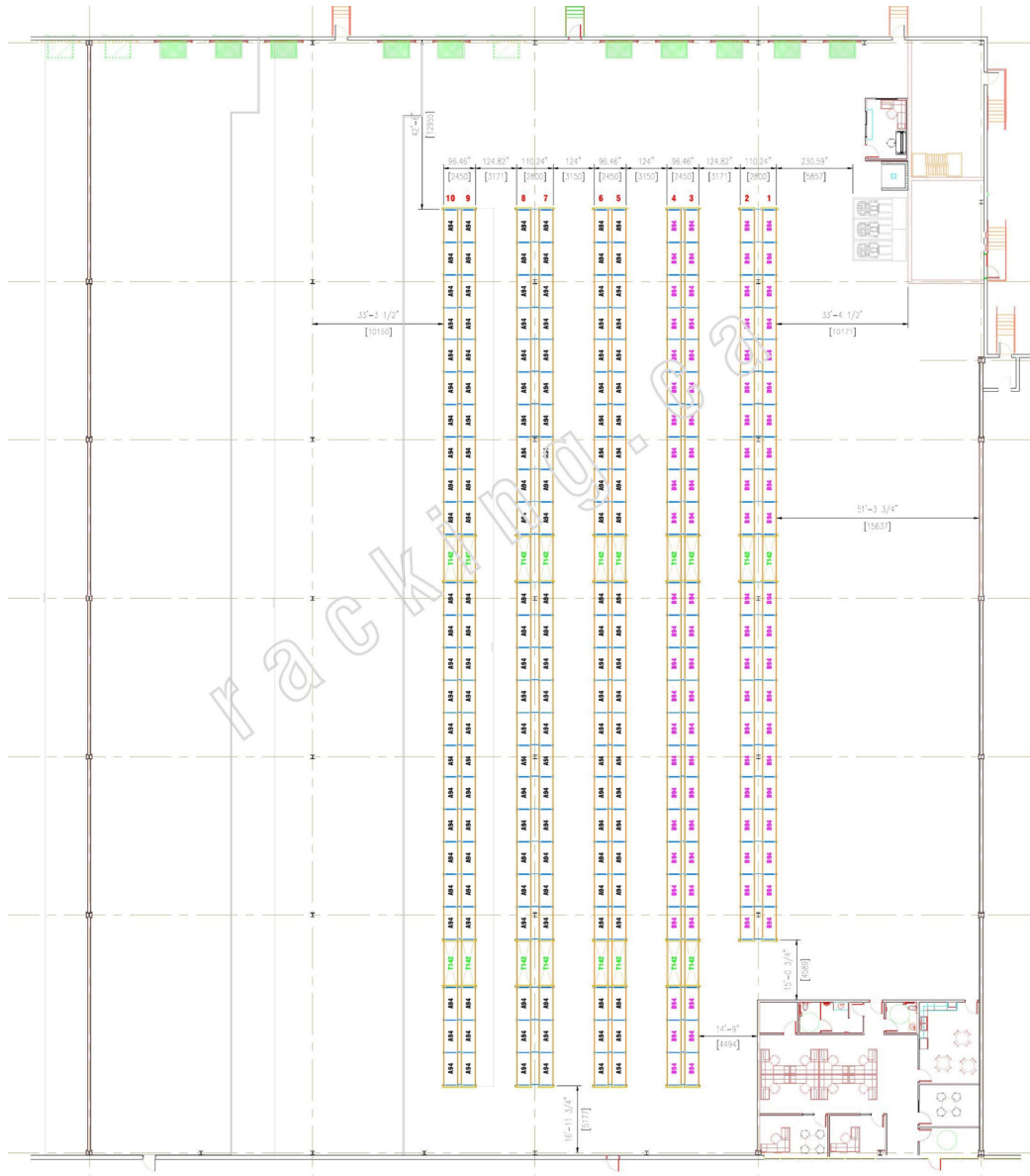
- + Shipping and receiving, material handling, pick and pack services, and daily deliveries in the Calgary area

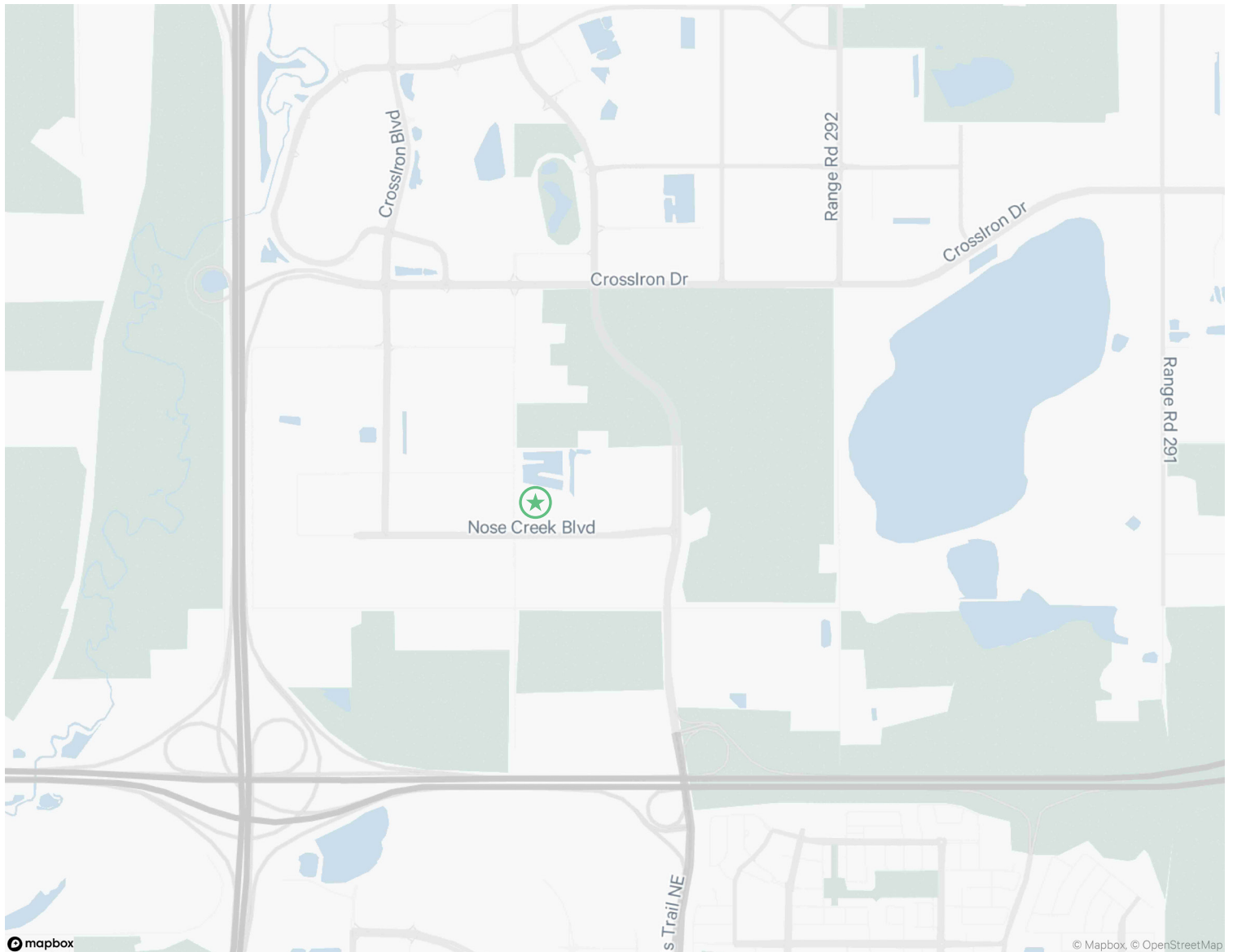


Building Plan



Floor Plan





Contact Us

Evan Renwick

Vice President
+1 403 750 0807
evan.renwick@cbre.com

*Lead Broker

Iain Ferguson

Vice Chairman
+1 403 750 0803
iain.ferguson@cbre.com

Luke Hamill

Senior Vice President
+1 403 294 5707
luke.hamill@cbre.com

Cameron Woods

Vice President
+1 403 303 4562
cameron.woods@cbre.com

Blake Ellis

Vice President
+1 403 750 0519
blake.ellis@cbre.com

This disclaimer shall apply to CBRE Limited, and to all divisions of the Corporation ("CBRE").The information set out herein (the "Information") has not been verified by CBRE, and CBRE does not represent, warrant or guarantee the accuracy, correctness and completeness of the Information. CBRE does not accept or assume any responsibility or liability, direct or consequential, for the Information or the recipient's reliance upon the Information. The recipient of the Information should take such steps as the recipient may deem necessary to verify the Information prior to placing any reliance upon the Information. The Information may change and any property described in the Information may be withdrawn from the market at any time without notice or obligation to the recipient from CBRE.

Mapping Sources: Canadian Mapping Services canadamapping@cbre.com; DMTI Spatial, Environics Analytics, Microsoft Bing, Google Earth.