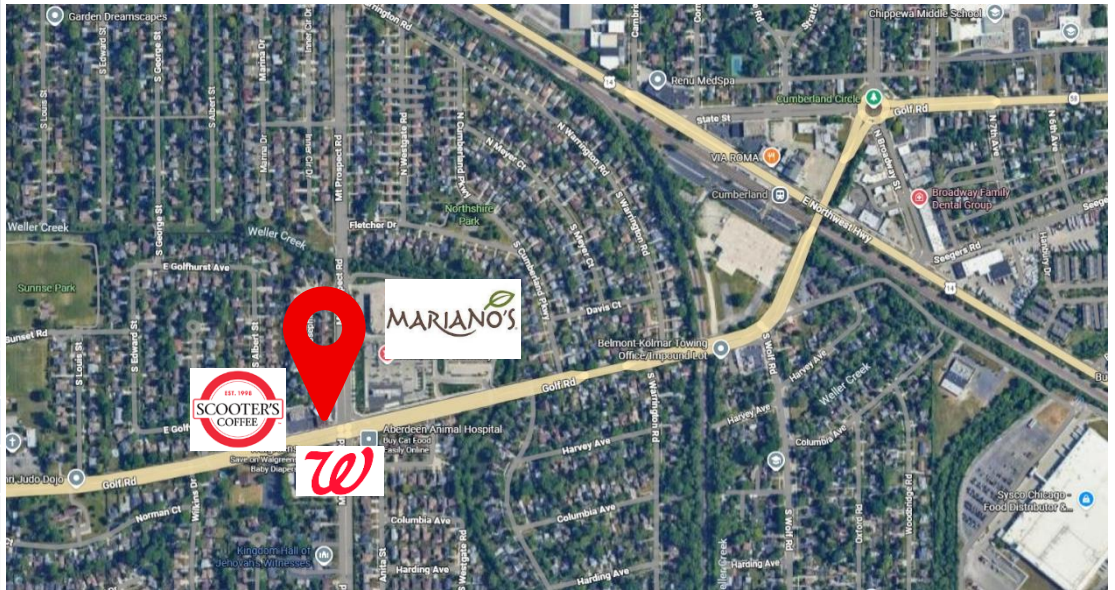
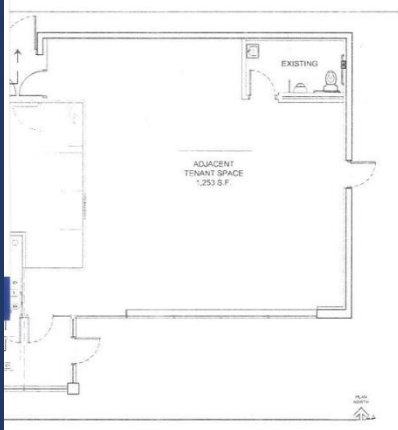


**1,352 Square  
Foot retail space**

**FOR LEASE:**

**Retail Space in Des Plaines, IL**

**20 West Golf Rd.**



**20 W. Golf Rd, Des Plaines, IL 60016**

**Features Include:**

Join brand new Scooters Coffee in this amazing high traffic location near the corner of Golf Rd. and Mount Prospect Avenue in Des Plaines, Illinois.

Space features high ceilings with big windows, on-site parking and amazing frontage on Golf Rd.



4747 W. Peterson Ave.,  
Chicago, IL 60646  
P: 773-736-6601  
E: RLoarie@imperialrealtyco.com  
www.imperialrealtyco.com

Please call to arrange a private viewing: 773-736-6601 RLoarie@imperialrealtyco.com

The information herein has been gathered from sources deemed reliable. We have no reason to doubt its accuracy, but we do not guarantee it