

Prime Yaletown Location | For Lease

CBRE

Suites 207, 330, 400 & 406

# 1168 Hamilton Street

Vancouver, BC



Beautiful brick and beam character space in one of Yaletown's most coveted buildings. 1168 Hamilton features renovated common areas with a water featured main lobby fronting Hamilton and Mainland Street and the surrounding vibrant retail amenities servicing the area. A short walk across the street provides direct access to the Canada Line via the Yaletown SkyTrain station and numerous bus lines servicing the area. Convenient underground parking, secure bike lock up and end of trip shower facility are enjoyed by tenants of the building along with a social communal rooftop patio.

## Available Area

- Suite 207 - ± 1,136 SF - Available Immediately
- Suite 330 - ± 1,695 SF - Available Immediately
- Suite 400 - ± 2,938 SF - Available July 1, 2025
- Suite 406 - ± 1,531 SF - Available Immediately

## Asking Net Rent

Contact Listing Agents for Details

## Operating Costs & Taxes

\$18.00 PSF (2025 Est.)

## Building Features

- Across from Yaletown-Roundhouse Station
- Bike & Locker Storage in Complex
- Rooftop Patio
- Central Location in Yaletown Core



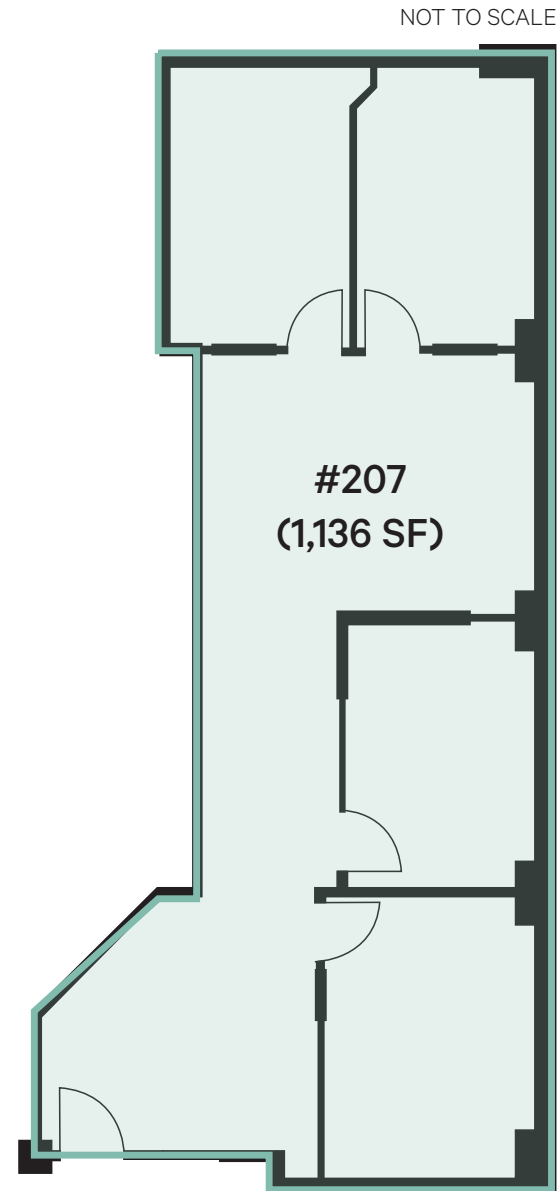
Renovated Lobby



Common Rooftop Deck

## Suite 207 Features

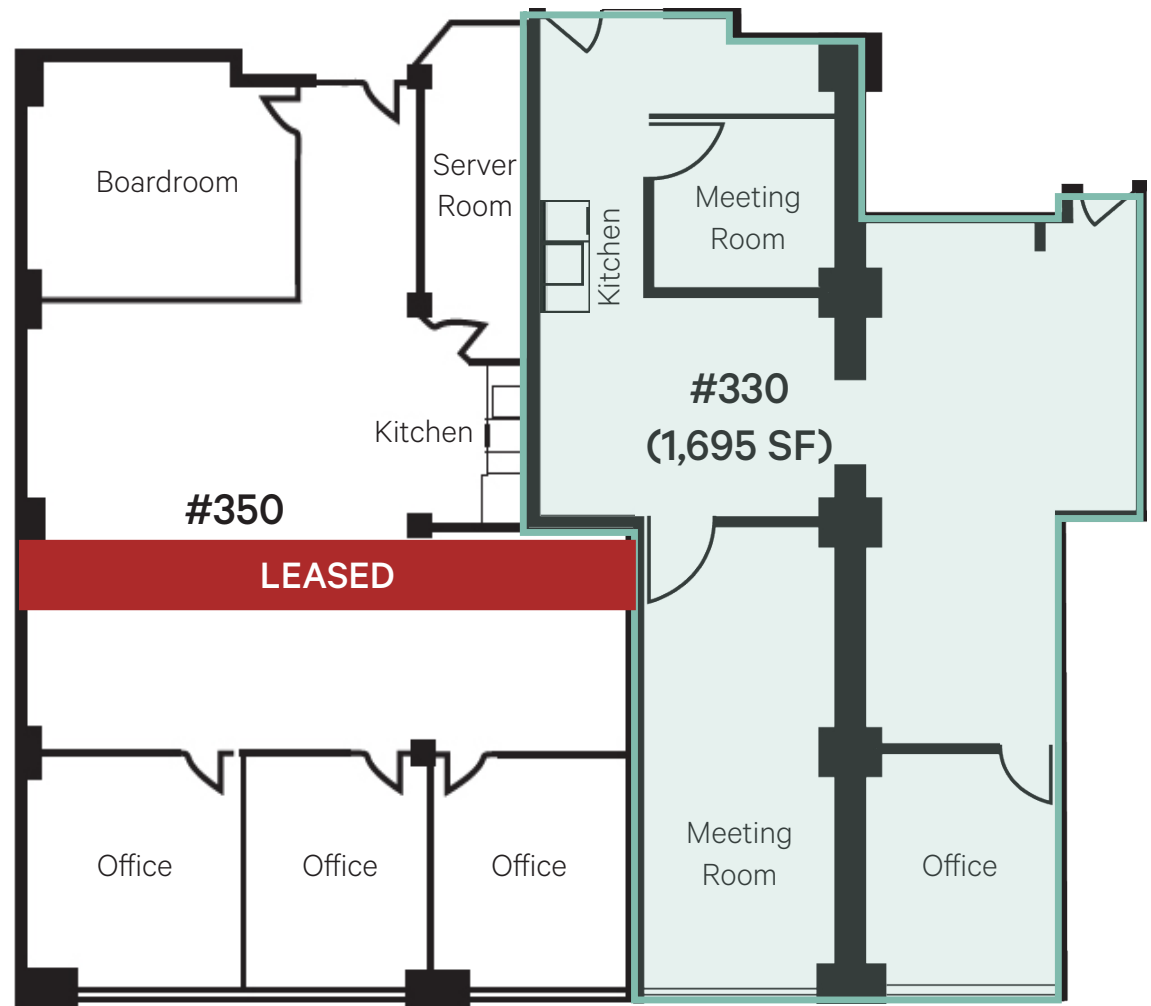
- Two large window offices
- Internal office
- Internal boardroom
- Open reception / work space
- Brick and beam features
- Operable windows



Floor Plan

## Suite 330 Features

- One office
- Two meeting rooms
- Kitchenette
- Open work area
- Brick and beam features
- HVAC distributed throughout



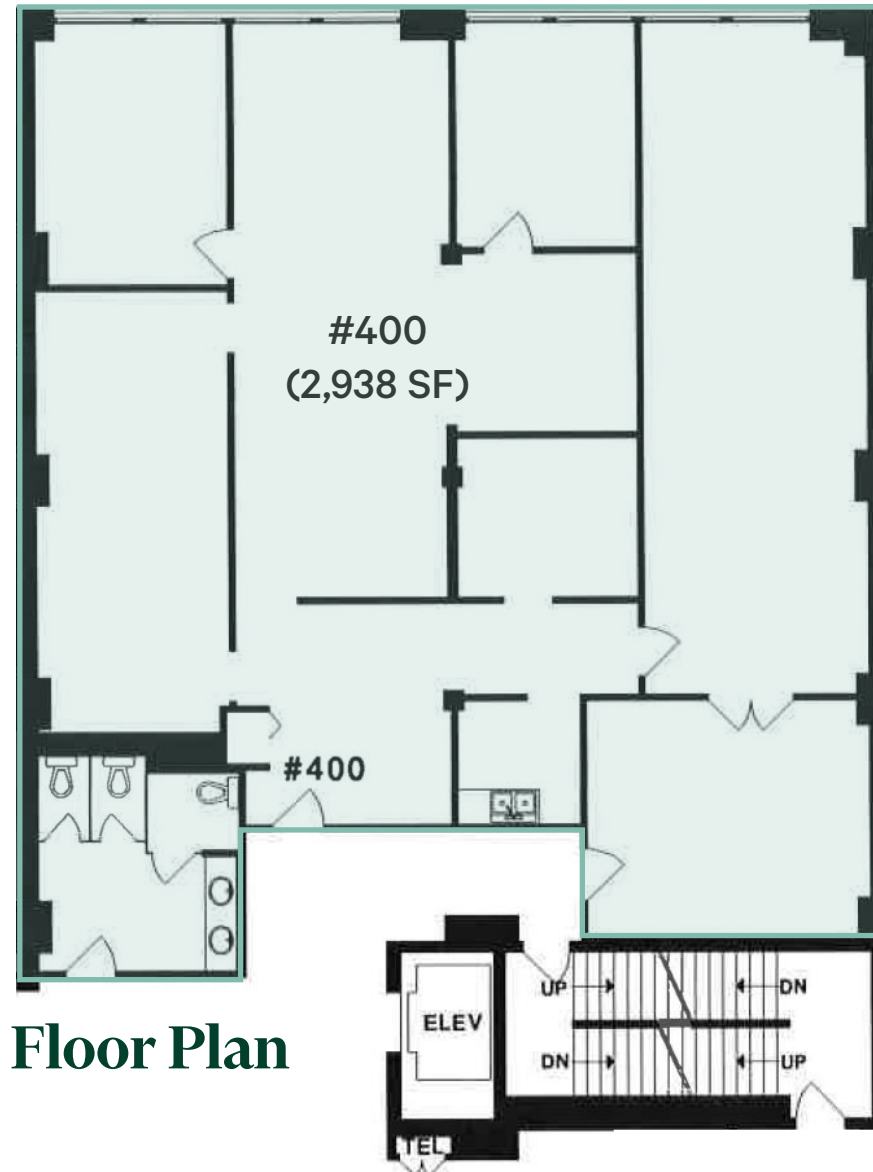
Floor Plan

NOT TO SCALE

## Suite 400 Features

- Two entrances
- Two meeting rooms
- Boardroom
- Two offices
- Kitchen
- Brick and beam features
- Operable windows
- HVAC distributed throughout

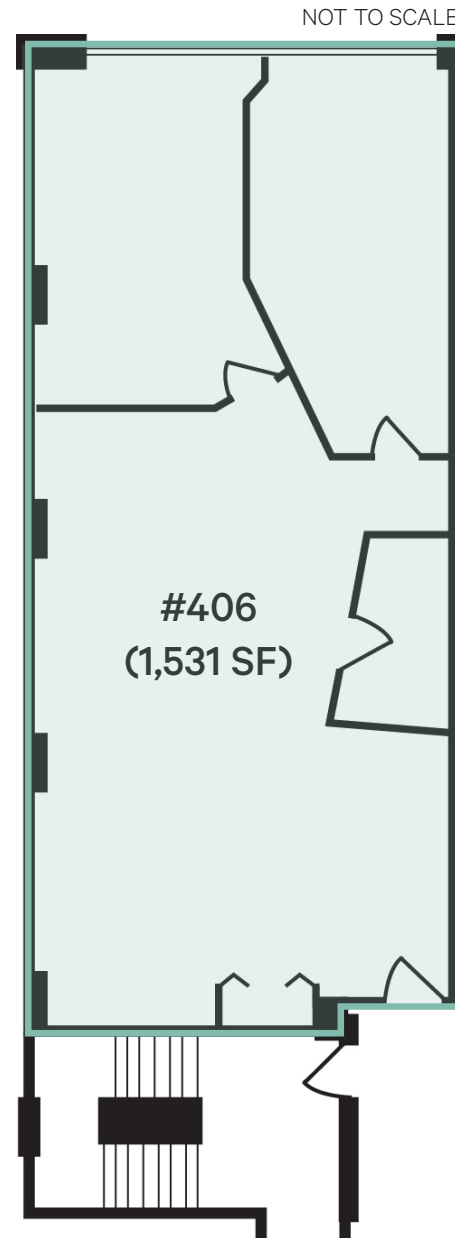
NOT TO SCALE



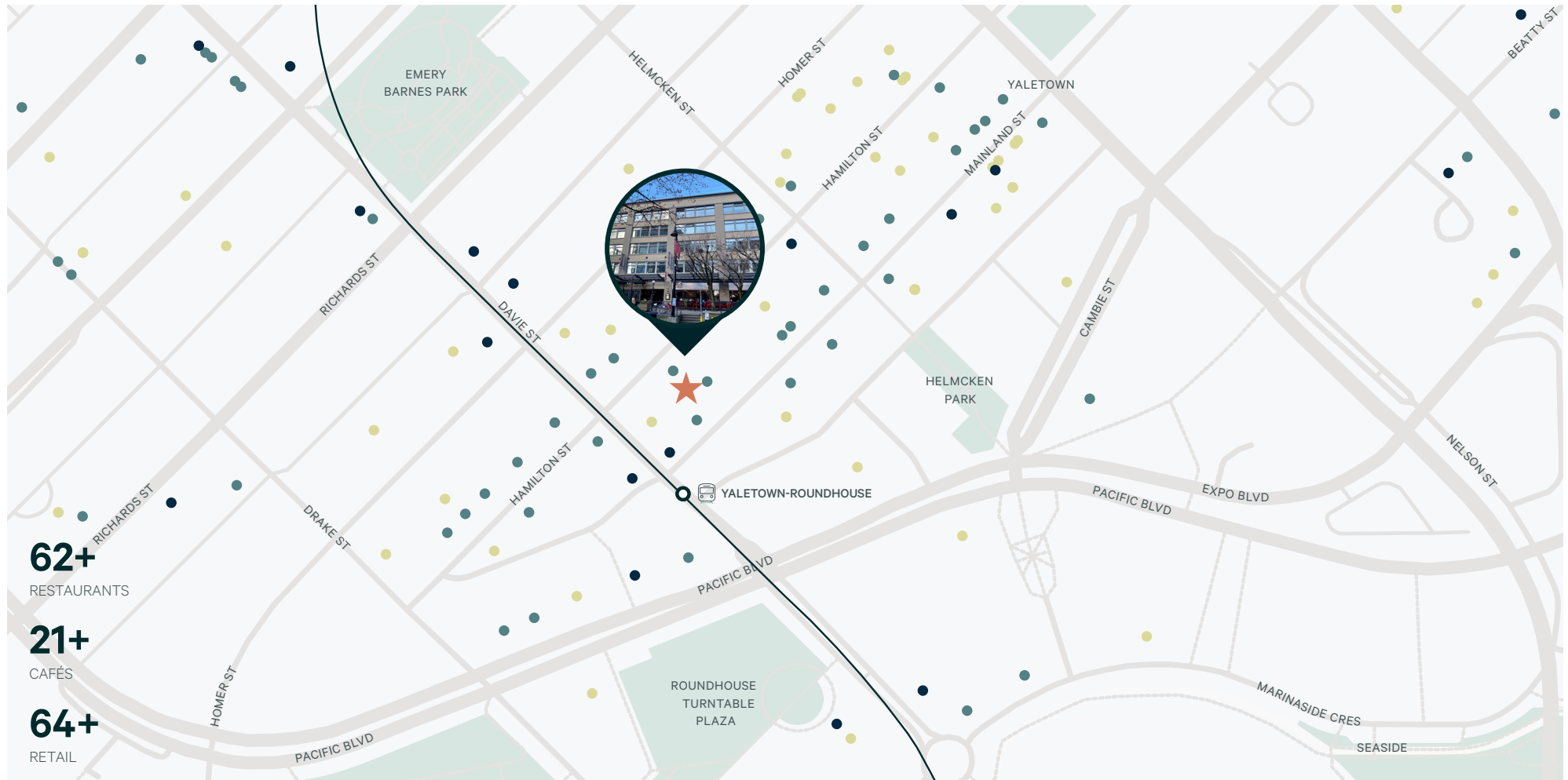
Floor Plan

## Suite 406 Features

- Two large window offices
- Storage room
- Open reception / work space
- Brick and beam features
- Operable windows
- HVAC distributed throughout



Floor Plan



**62+**  
RESTAURANTS

**21+**  
CAFÉS

**64+**  
RETAIL

Restaurants
 Cafés
 Retail

## Contact

**Tara Finnegan**  
 Personal Real Estate Corporation  
 Senior Vice President | Office Properties  
 +1 604 662 5159  
[tara.finnegan@cbre.com](mailto:tara.finnegan@cbre.com)

**Ellen Pines**  
 Transaction Manager  
 Office Properties  
 +1 604 704 9637  
[ellen.pines@cbre.com](mailto:ellen.pines@cbre.com)

CBRE Limited | 1021 West Hastings Street | #2500 | Vancouver, BC V6E 0C3 | [www.cbre.ca](http://www.cbre.ca)

This disclaimer shall apply to CBRE Limited, Real Estate Brokerage, and to all other divisions of the Corporation; to include all employees and independent contractors ("CBRE"). The information set out herein, including, without limitation, any projections, images, opinions, assumptions and estimates obtained from third parties (the "Information") has not been verified by CBRE, and CBRE does not represent, warrant or guarantee the accuracy, correctness and completeness of the Information. CBRE does not accept or assume any responsibility or liability, direct or consequential, for the Information or the recipient's reliance upon the Information. The recipient of the Information should take such steps as the recipient may deem necessary to verify the Information prior to placing any reliance upon the Information. The Information may change and any property described in the Information may be withdrawn from the market at any time without notice or obligation to the recipient from CBRE. CBRE and the CBRE logo are the service marks of CBRE Limited and/or its affiliated or related companies in other countries. All other marks displayed on this document are the property of their respective owners. All Rights Reserved.

Mapping Sources: Canadian Mapping Services [canadamapping@cbre.com](mailto:canadamapping@cbre.com); DMTI Spatial, Environics Analytics, Microsoft Bing, Google Earth.