

# PROFESSIONAL OFFICE SPACE WITH ON SITE PARKING

## NEWLY REMODELED SPACE ADJACENT TO I-496



**FOR LEASE**  
1000 W St. Joseph St.  
Lansing, MI

**AVAILABLE:**  
**SUITE 100: 2,000 SF**

**THOMAS JAMIESON, SIOR**  
Senior Vice President, Office Advisor  
Direct: 517 319-9235  
[thomas.jamieson@martincommercial.com](mailto:thomas.jamieson@martincommercial.com)

**ERIC F. ROSEKRANS, CCIM, CPM**  
Executive Vice President  
Direct: 517 319-9209  
[eric.rosekrans@martincommercial.com](mailto:eric.rosekrans@martincommercial.com)

  
**Martin**  
[martincommercial.com](http://martincommercial.com)



## QUALITY OFFICE SPACE MINUTES FROM DOWNTOWN LANSING

Ideally positioned office building adjacent to I-496, this 2,000 SF office suite offers a clean, professional environment with modern finishes and convenient on-site parking. The flexible layout includes private offices, meeting areas, and welcoming common space suited for a variety of professional users. Located just minutes from Downtown Lansing, the State Capitol, and Michigan State University, the property combines accessibility, functionality, and everyday convenience.

### LEASE RATE:

**\$18.00**

PSF/YR, + UTILITIES & JANITORIAL

### PROPERTY FEATURES



**BUILT:**  
2001,  
Remodeled 2021



**PARKING:**  
40 Paved Spaces



**OFFICES:**  
(4) Four Offices,  
Conference Room  
with Sink



**INTERSTATE:**  
1 Mile to I-96



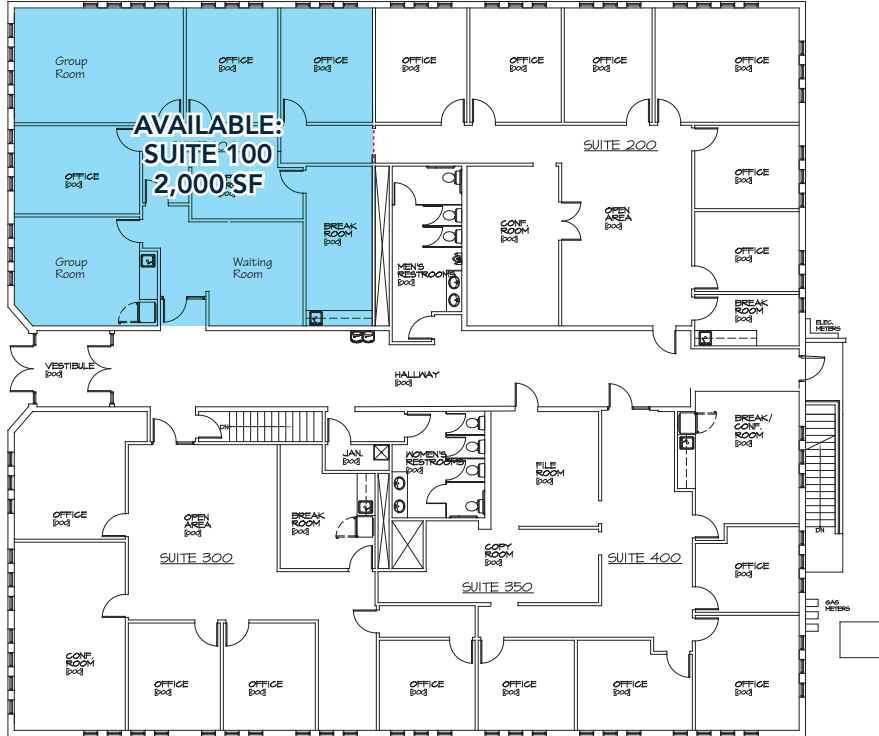
**INTERIOR:**  
Move-in Ready



**INTERIOR:**  
Break Room, Copy  
Area, Reception  
Area



# FLOOR PLAN





# AREA INFORMATION

1 Minute  
to I-496 Interchange

3 Minutes  
to Michigan State Capitol

1.8 Miles  
to Lansing Community College

4.5 Miles  
to Michigan State University

Convenient to  
Capitol Region International  
Airport, I-96, I-69, I-496, and  
downtown Lansing



## DEMOGRAPHICS

Proximity	1-Mile	3-Miles	5-Miles
Population	188,198	11,628	90,868
Households	80,251	5,710	40,489
Average HH Income	\$76,978	\$70,534	\$71,783

## TRAFFIC COUNTS - VPD

St. Joseph	10,362
MLK Blvd.	10,752
I-496	51,297

# Martin Your Vision. Our Mission.

Martin Commercial Properties is a vertically integrated commercial real estate firm with an established track record of delivering superior service and unparalleled results to clients since 1962. Our experienced team efficiently serves clients nationally by combining big business benefits with the attentiveness to detail and insight that you would expect from a local firm. With offices in Lansing, Grand Rapids, and Tampa, we provide strategic advice and execution in five core lines of business including brokerage services, investment services, property management, property development, and corporate services.



Brokerage  
Services



Property  
Management



Construction  
Services



Investment  
Services



Corporate  
Services

[martincommercial.com](https://martincommercial.com) | East Lansing | Grand Rapids | Tampa

© 2026 Martin Commercial Properties, Inc. All rights reserved. This information has been obtained from sources believed reliable but has not been verified for accuracy or completeness. You should conduct a careful, independent investigation of the property and verify all information. Any reliance on this information is solely at your own risk. Martin Commercial Properties and the Martin logo are service marks of Martin Commercial Properties, Inc. All other marks displayed on this document are the property of their respective owners. Photos herein are the property of their respective owners. Use of these images without the express written consent of the owner is prohibited.