

# Woodside

## HILLCROFT CORPORATE CENTER

6300 WOODSIDE COURT, COLUMBIA, MD 21046



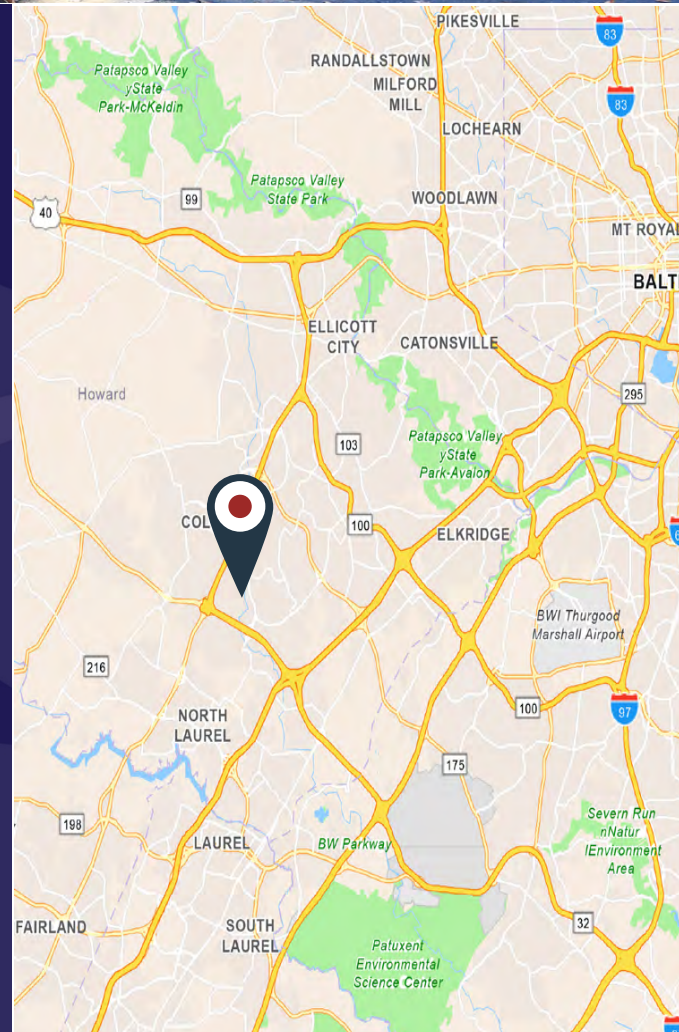
# FOR SALE/LEASE

## Available Suites

- Suite A & B - 3,719 contiguous square feet available
- Suites C & D - 3,779 contiguous square feet available

## Property Highlights

- Ample Parking 4 per 1000 square feet
- Zoned NT, B-1
- Located at the Southeast quadrant of Route 29 and Broken Land Parkway, providing outstanding access to Routes 29, 32, 175, I-95 and I-70.
- Located 1/2 mile to Merriweather District and 1 mile to the Mall in Columbia providing superior access to abundant retail and restaurant amenities.
- Professionally managed by Abrams Development Group, Headquartered in Columbia, Maryland.



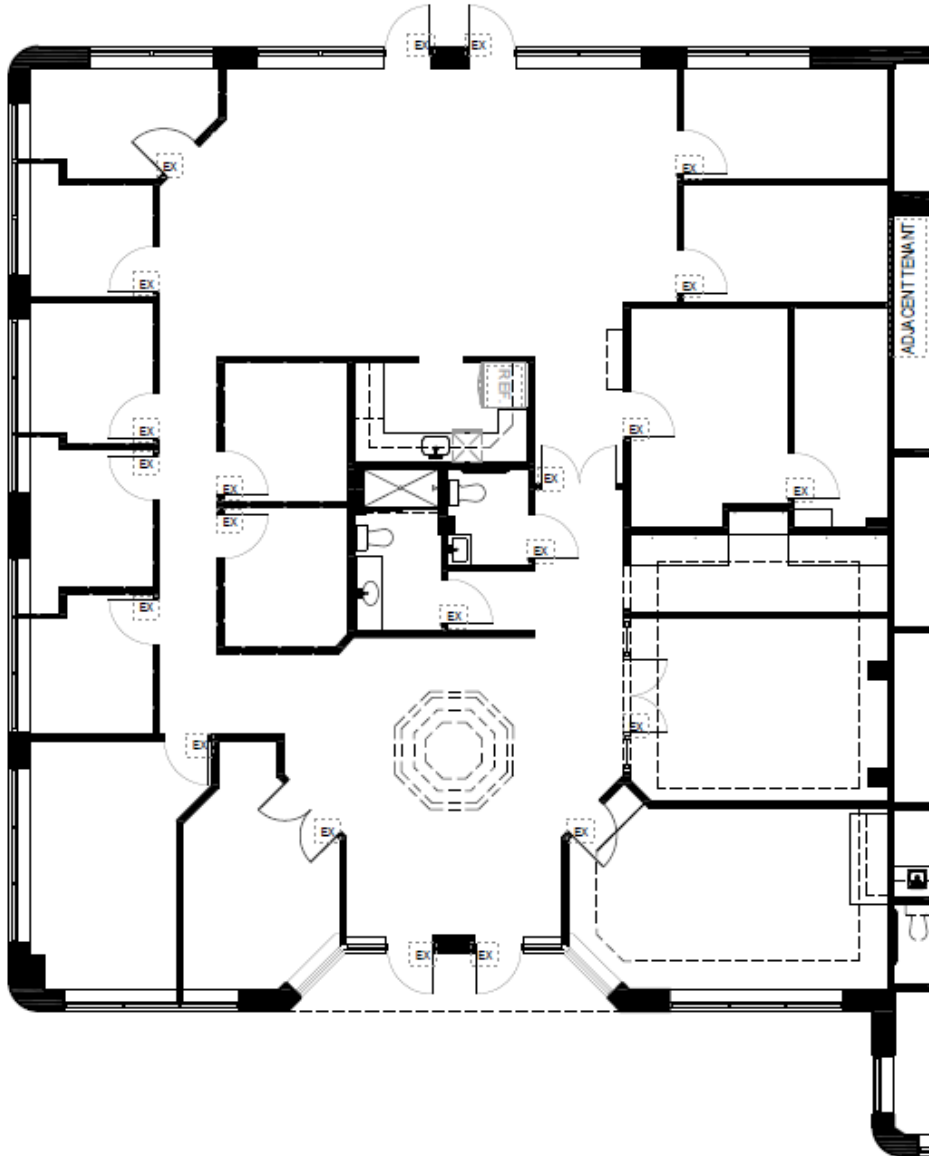
Owned and Managed by



# HILLCROFT CORPORATE CENTER

6300 Woodside Court

Suite A&B 3,719  
Square Feet



**Matt Wilson**  
(443) 539 - 4803  
mwilson@abramsdevelopment.com

**Colin Burch**  
(443) 975 - 9799  
cburch@abramsdevelopment.com

**Abrams Development Group**  
8601 Robert Fulton Drive  
Columbia, Maryland 21046  
abramsdevelopment.com

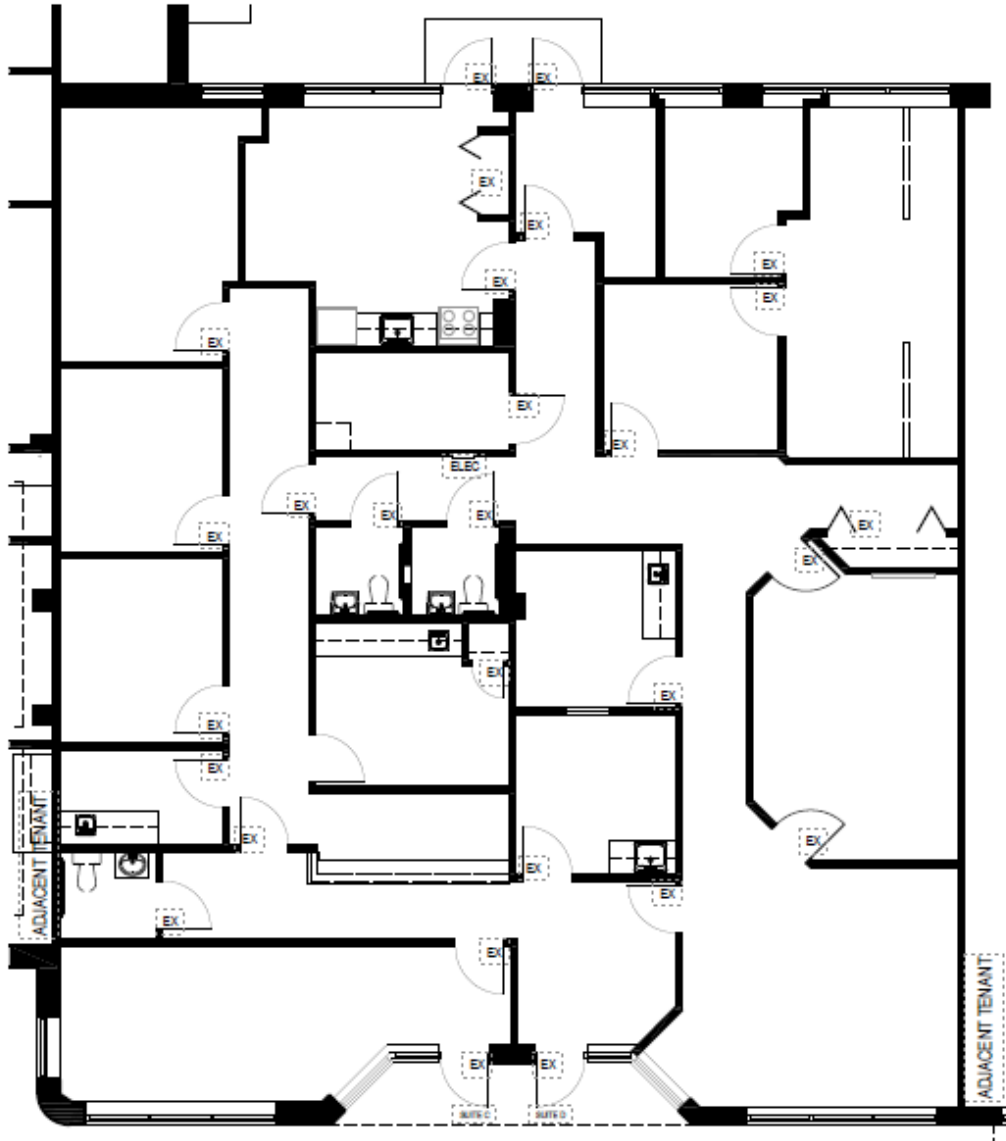
Owned and Managed by



# HILLCROFT CORPORATE CENTER

6300 Woodside Court

Suite C&D  
3,779 Square Feet



**Matt Wilson**  
(443) 539 - 4803  
mwilson@abramsdevelopment.com

**Colin Burch**  
(443) 975 - 9799  
cburch@abramsdevelopment.com

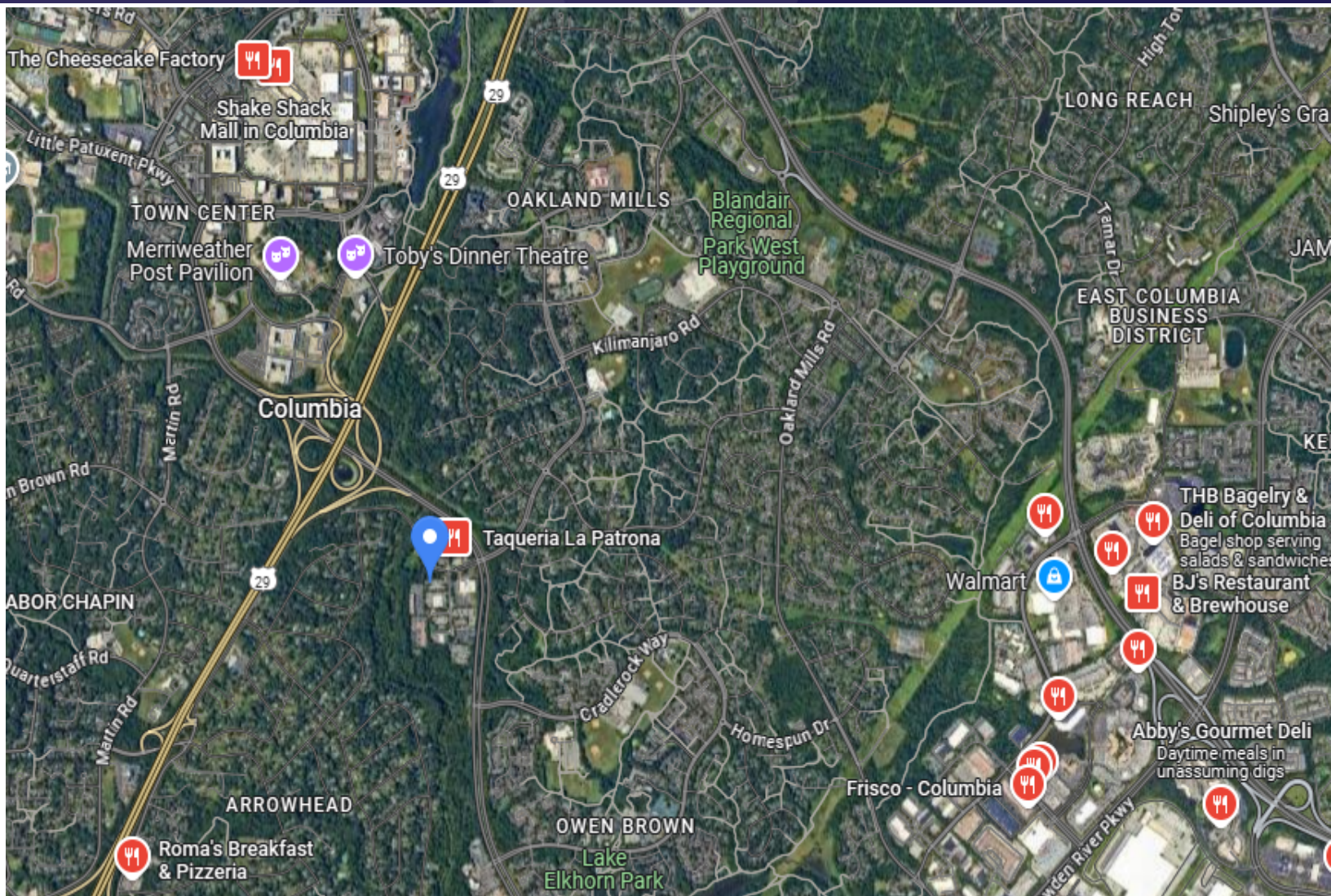
**Abrams Development Group**  
8601 Robert Fulton Drive  
Columbia, Maryland 21046  
abramsdevelopment.com

Owned and Managed by



# HILLCROFT CORPORATE CENTER

6300 Woodside Court



### Amenities within 1 Mile

- Taqueria La Patrona
- Merriweather Post Pavilion
- Roma's Breakfast & Pizzeria
- The Food Market
- Busboys & Poets
- Dok Khao Thai
- McDonalds

### Amenities within 3 Miles

- The Cheesecake Factory
- El Sabor Chapin
- The Ale House Columbia
- Stanford Grill
- Cinco De Mayo
- Jasons Deli
- Frisco Columbia
- Shake Shack

### Amenities within 5 Miles

- La Madeleine
- Pub Dog Pizza & Draft House
- THB Bagelery & Deli
- BJ's Restaurant & Brewhouse
- Abby's Gourmet Deli
- Old Line Kitchen & Wine Bar
- Bi Bi Cafeteria

**Matt Wilson**  
(443) 539 - 4803  
[mwilson@abramsdevelopment.com](mailto:mwilson@abramsdevelopment.com)

**Colin Burch**  
(443) 975 - 9799  
[cburch@abramsdevelopment.com](mailto:cburch@abramsdevelopment.com)

**Abrams Development Group**  
8601 Robert Fulton Drive  
Columbia, Maryland 21046  
[abramsdevelopment.com](http://abramsdevelopment.com)