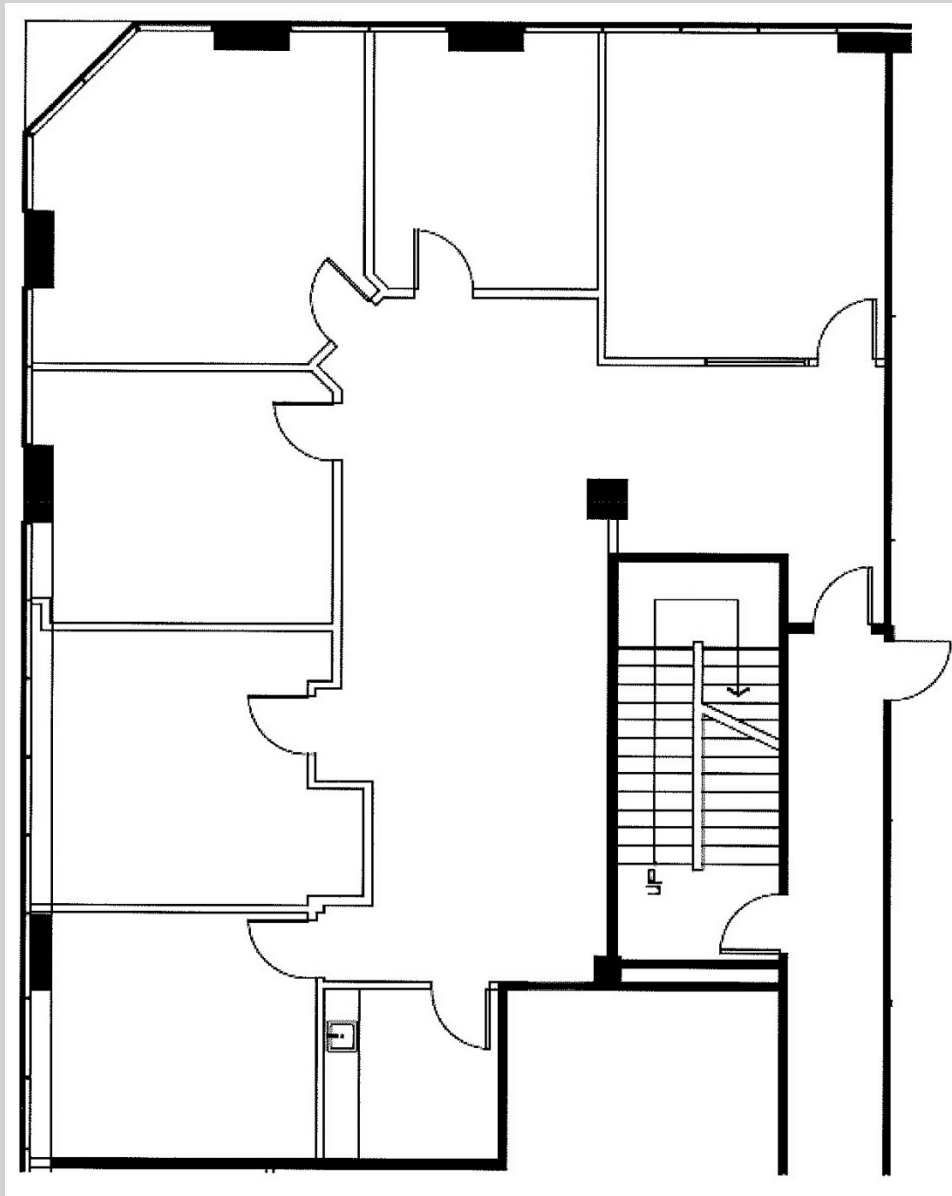
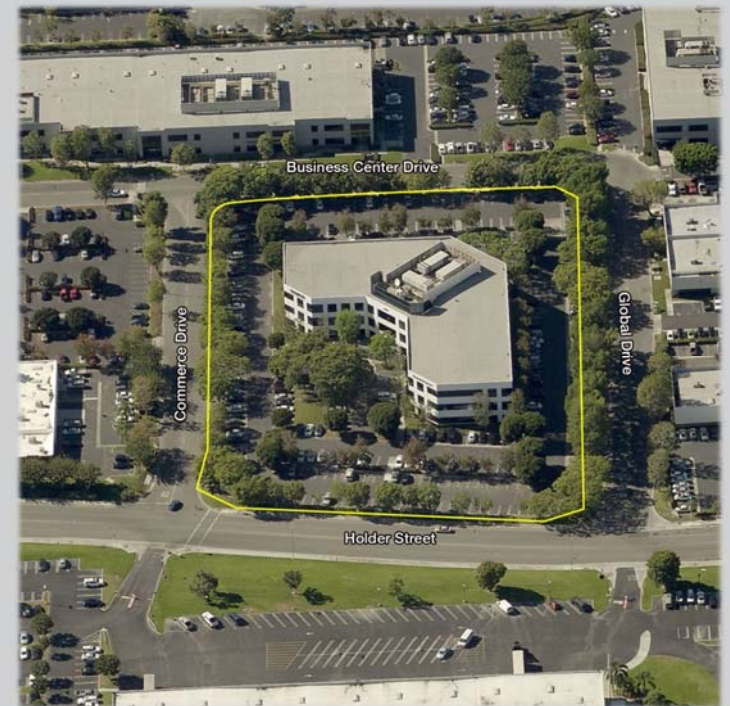


Cypress Corporate Plaza
10805 Holder Street
Cypress, CA 90630

Suite 220
2,347 Rentable Square Feet



Steve Ehrich
Senior Vice President
949.468.2328 Direct
sehrich@naicapital.com
BRE Lic #01092019

John Bosko
Senior Vice President
949.468.2323 Direct
johnbosko@naicapital.com
BRE Lic #00969975

1920 Main Street, Suite 100
Irvine, CA 92614
Tel 949.854.6600
Fax 949.854.7378
www.naicapital.com

NAI Capital
Commercial Real Estate Services, Worldwide.