

For Lease or Sale | 1940 Railroad Drive, Sacramento, CA

±16,000 SF Industrial Building | ±1.32 AC

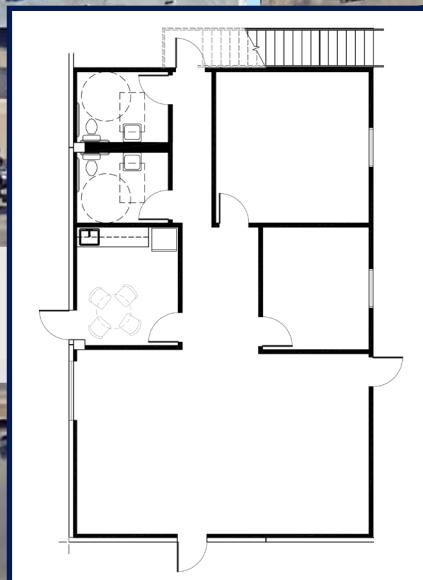
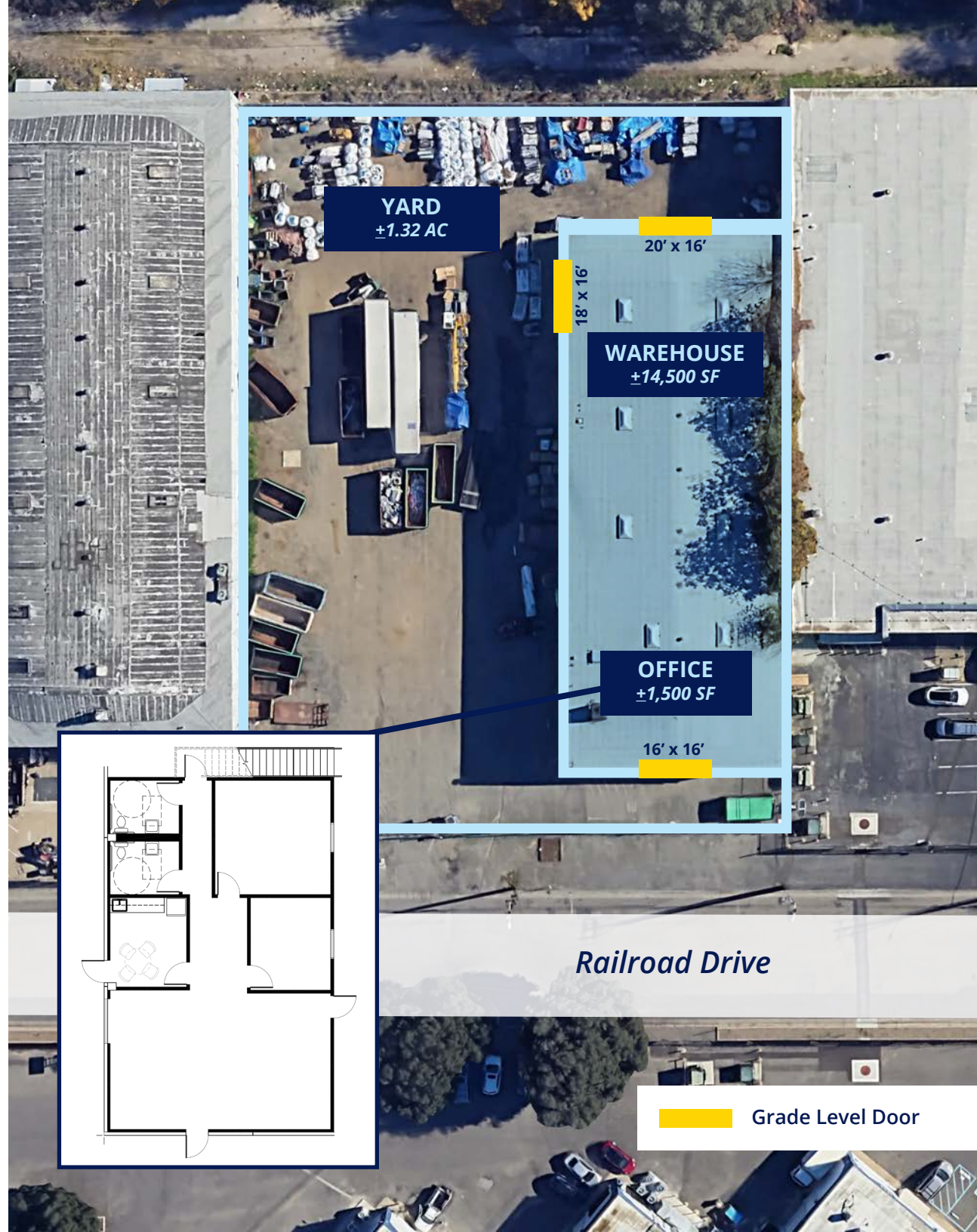
Tommy O. Ponder, SIOR
Executive Vice President
+1 916 563 3005
tommy.ponder@colliers.com
CA Lic. 01431506

George Vrame, SIOR
Senior Vice President
+1 916 563 3041
george.vrame@colliers.com
CA Lic. 02028936



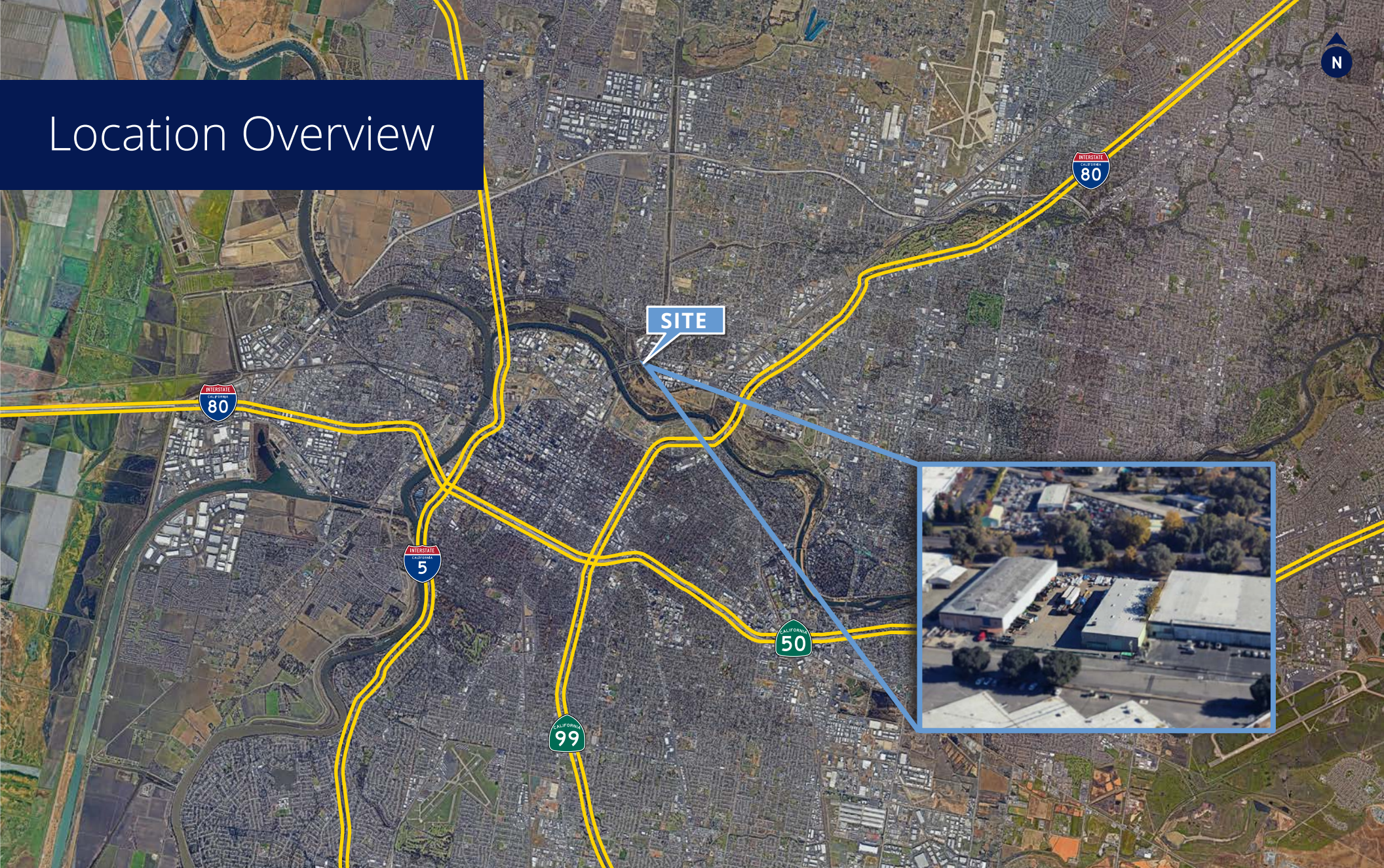
Property Details

| | |
|-------------------|--|
| Building Size | ±16,000 SF Clear Span Building |
| Land Area | ±1.32 AC Fully Fenced & Secured Amarock Electric Fence |
| Office | ±1,500 SF Office ±1,500 SF Mezzanine |
| Zoning | M-I  |
| Construction | Concrete |
| Clear Height | 27' - 28' |
| Power | 400 Amps / 480V |
| Grade Level Doors | One (1) 20' x 16' One (1) 18' x 16' One (1) 16' x 16' <i>Drive through access</i> |



 Grade Level Door

Location Overview



Tommy O. Ponder, SIOR
Executive Vice President
+1 916 563 3005
tommy.ponder@colliers.com
CA Lic. 01431506

George Vrame, SIOR
Senior Vice President
+1 916 563 3041
george.vrame@colliers.com
CA Lic. 02028936

