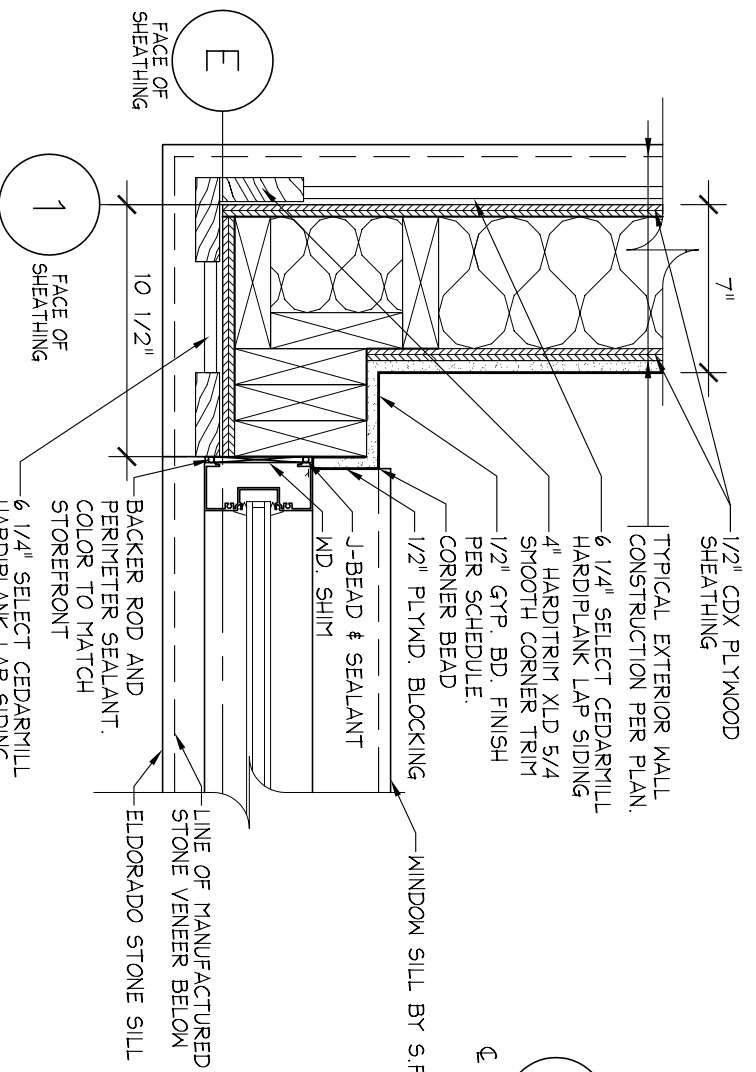


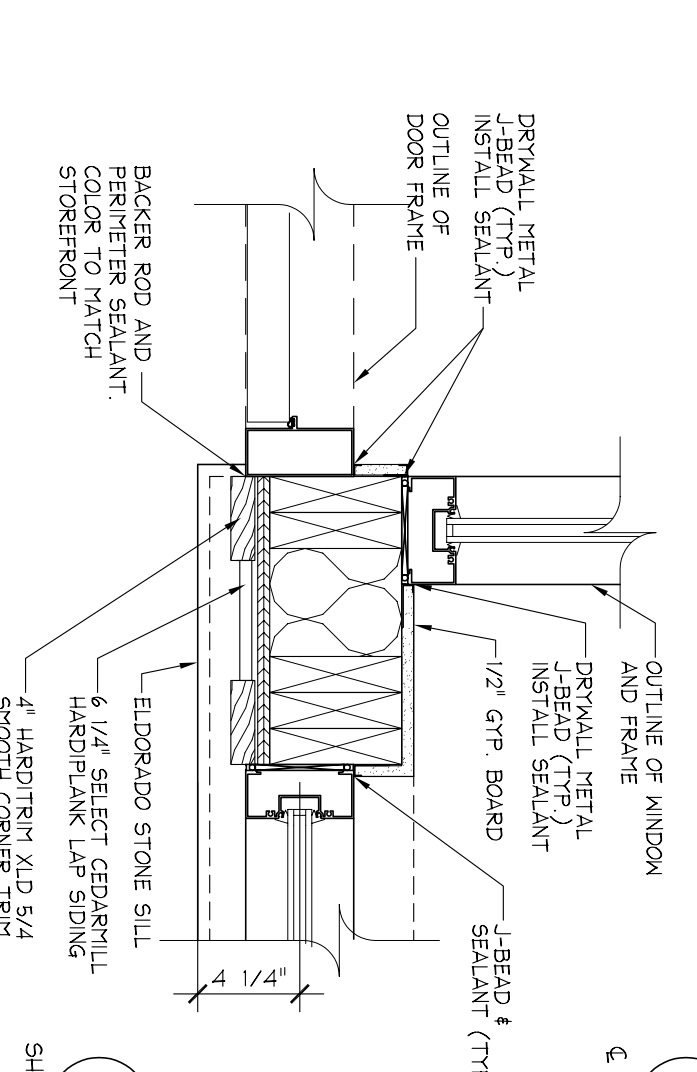
4 PLAN DETAIL @ STOREFRONT

A1 1-1/2" = 1'-0"



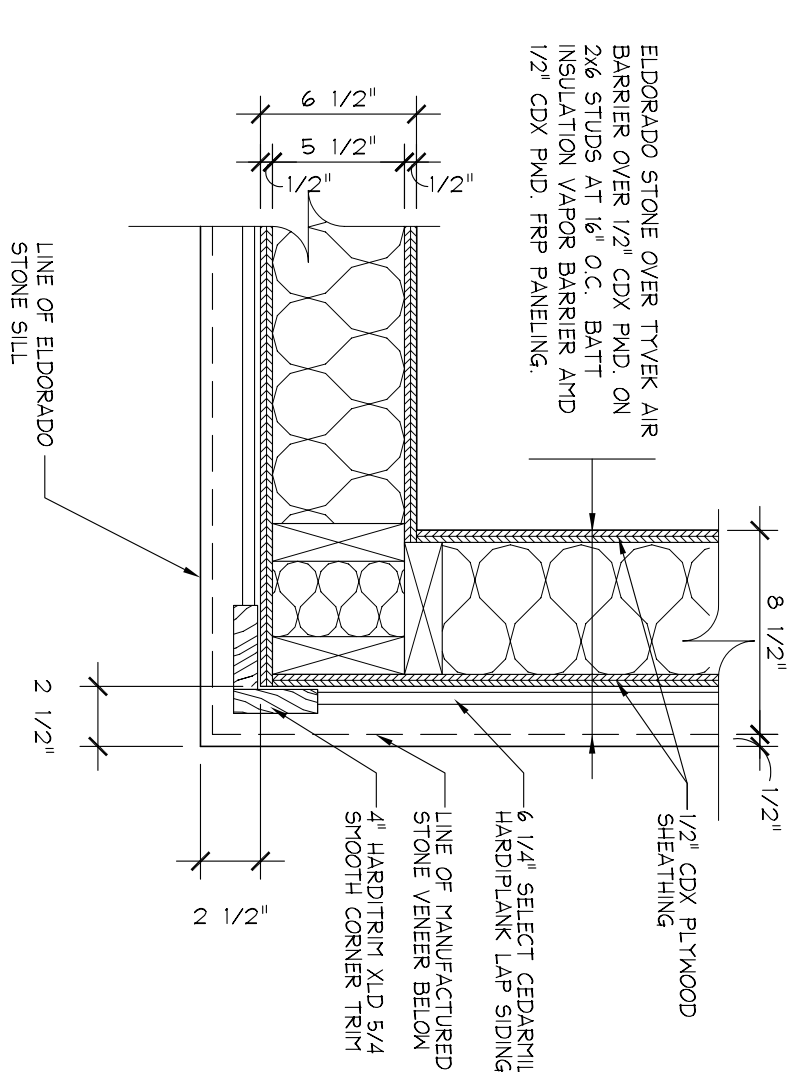
3 PLAN DETAIL @ STOREFRONT CORNER

A1 1-1/2" = 1'-0"



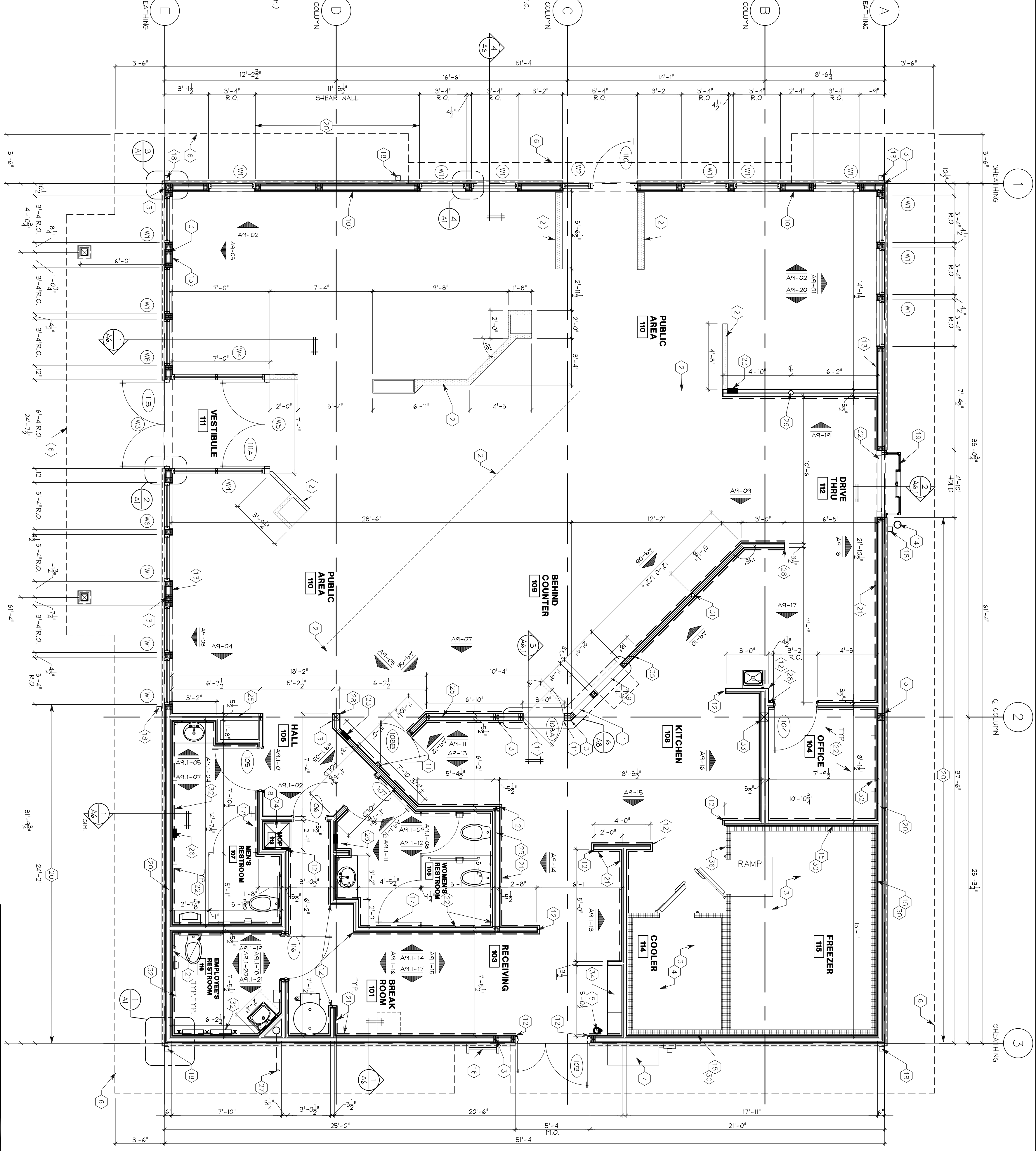
2 PLAN DETAIL @ VESTIBULE

A1 1-1/2" = 1'-0"



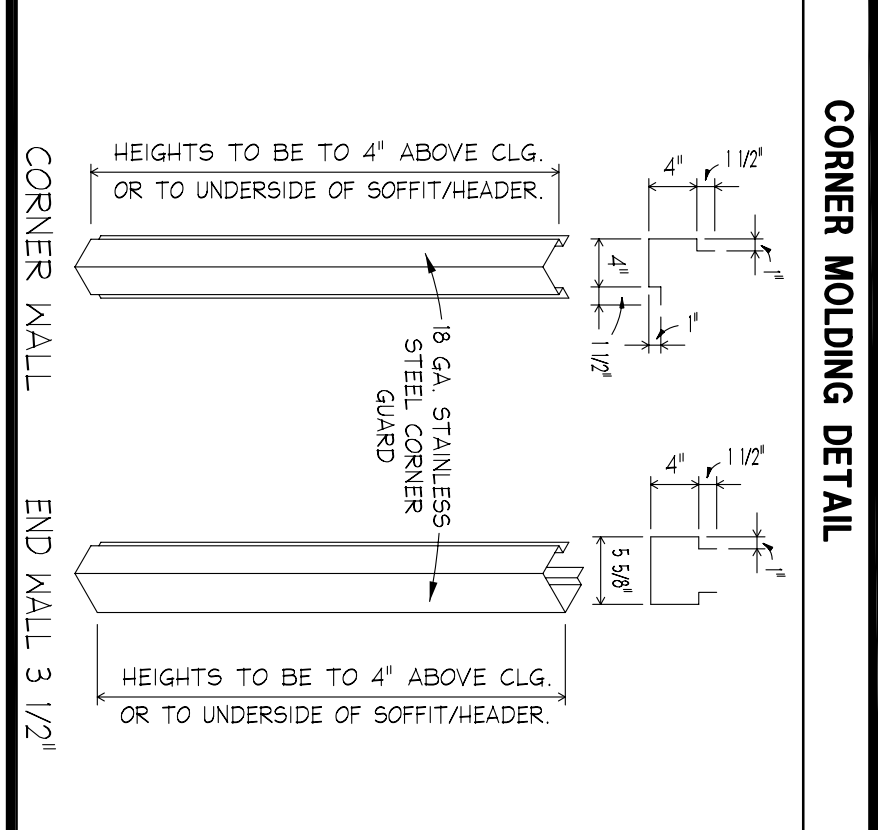
1 PLAN DETAIL @ CORNER

A1 SCALE: 1-1/2" = 1'-0"



FLOOR PLAN

1/4" = 1'-0"



- GENERAL NOTES**
1. ALL PARTITIONS NOT DIMENSIONED ARE 3 1/2" WOOD STUDS. (3 1/2", 20GA METAL STUDS MAY BE USED.)
 2. SEE FINISH SCHEDULE/FLOOR COVERING SHEET FOR EXTENT OF FLOOR TILE.
 3. ARE TO FACE OF PLYWOOD SHEATHING UNLESS NOTED OTHERWISE.
 4. INTERIOR DIMENSIONS ARE FROM FACE OF FRAMING.
 5. INTERIOR DOORS ARE SHOWN ON SHEET AS PER PLAN.
 6. SEE SITE PLAN FOR LOCATIONS/EXTENT OF SIDEWALKS, ETC.
- FLOOR PLAN NOTE LEGEND**
1. LOCATION FOR ITEM #41 - REFER TO BE BUILT INTO WALL. SEE DETAIL 6/48 & 7/48 FROM COUNTER AND DOWN WALLS AFTER THIS ARE IN PLACE. SEE DETAIL 5/48 FOR FINISH SCHEDULE.
 2. PERMANENTLY WALK IN FREEZER/COOLER PROVIDED AND INSTALLED BY OWNER. FREEZER TO HAVE INSULATED FLOOR AND ELECTRICAL PLUMBING SHEETS. COORDINATE W/ ELEC. REPRESENTATIVE.
 3. COOLER TO RECEIVE QUARTY TILE FLOOR & BASE. SEE FINISH SCHEDULE FOR TILE AND BASE.
 4. SHEETS MOUNTED FIRE EXTINGUISHER - VERIFY TYPE AND LOCATION WITH MARSHAL ABOVE.
 5. C/T CABINET & ELECTRIC METERS AT THIS LOCATION AS REQUIRED. COORDINATE WITH LOCAL UTILITIES.
 6. WALLS AROUND VOP SINK TO RECEIVE FFP FINISH OVER SHEETS. RESISTANT PLYWOOD SHEATHING INSTALL WHERE LOCATION FOR ITEM #54.4 TO BE BUILT INTO WALL. SEE DETAIL 6/48 & 6/48.
 7. ENTER FROM WALL TO RECEIVE 1/2" CDX PLYWOOD ON 1/2" WOOD STUDS @ 16" O.C. EXTEND 1/2" GYP MB TO 12" A.F.F. EXTEND 1/2" GYP MB TO ABOVE CEILING. SEE SECTIONS & STRUCTURAL.
 8. STAINLESS STEEL CORNER GUARDS PROVIDED AND INSTALLED BY OWNER. SEE DETAIL THIS SHEET FROM KITCHEN EQUIPMENT SUPPLIER. SEE DETAIL THIS SHEET.
 9. 1/2" MOISTURE-RESISTANT PLYWOOD FROM FLOOR TO 12" A.F.F. ON WOOD STUDS @ 16" O.C. EXTEND 1/2" GYP MB TO ABOVE CEILING. (TYP. AT DINING ROOM) SEE DETAIL 6/48 & 6/48.
 10. 6" W/ALUMINUM BOL-48 BOLLARD COVER. SEE DETAIL 7/502 PROVIDE 1" AIRSPACE AROUND FREEZER/COOLER PER MANUFACTURERS DETAILS.
 11. ROOF LADDERS - SEE DETAIL 5/48.
 12. G.C. TO PROVIDE & INSTALL TOILET PARTITIONS. SEE SHEET 12/01 FOR TOILET PARTITION AND ZIRN ZIG CAST IRON BOOT EXTENDED TO NEAREST CATCH BASIN.
 13. HORTON TEX 2000 AUTOMATIC BIPARTING DRIVE THRU WINDOW CURTAIN BY TID. INSTALLED BY G.C. DO NOT INSTALL PICK UP CURTAIN. COORDINATE W/ TID. CONSTRUCTION MANAGER.
 14. SHERA WALL LOCATION SEE STRUCTURAL.
 15. DASHED LINE INDICATES 1/2" PLYWOOD SHEATHING FROM FLOOR TO 6" ABOVE ACOUSTIC TILE CEILING OR UNDERSIDE PLYWOOD FROM FLOOR TO 12" A.F.F.