

# FOR LEASE

# OUTDOOR YARD + SHOWROOM



## 28792 Camino Capistrano, Laguna Niguel, CA 92675

### OVERVIEW

Square Feet:  $\pm$ 23,718 SF Yard with Fence

$\pm$ 936 SF Office/Showroom

Zoning: Community Service (CS)

Located adjacent to In-N-Out Burger along side the 5 Freeway where it meets the 73 Toll Road. Direct access from Camino Capistrano at the Laguna Niguel and the San Juan Capistrano border.

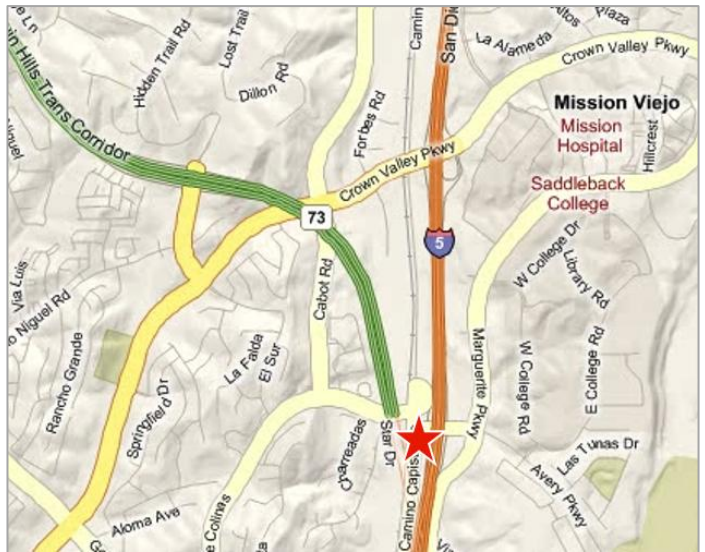
### PAUL ROOT

Partner

Broker Lic. 01478228

949.874.5698

paul@mस्पcre.com



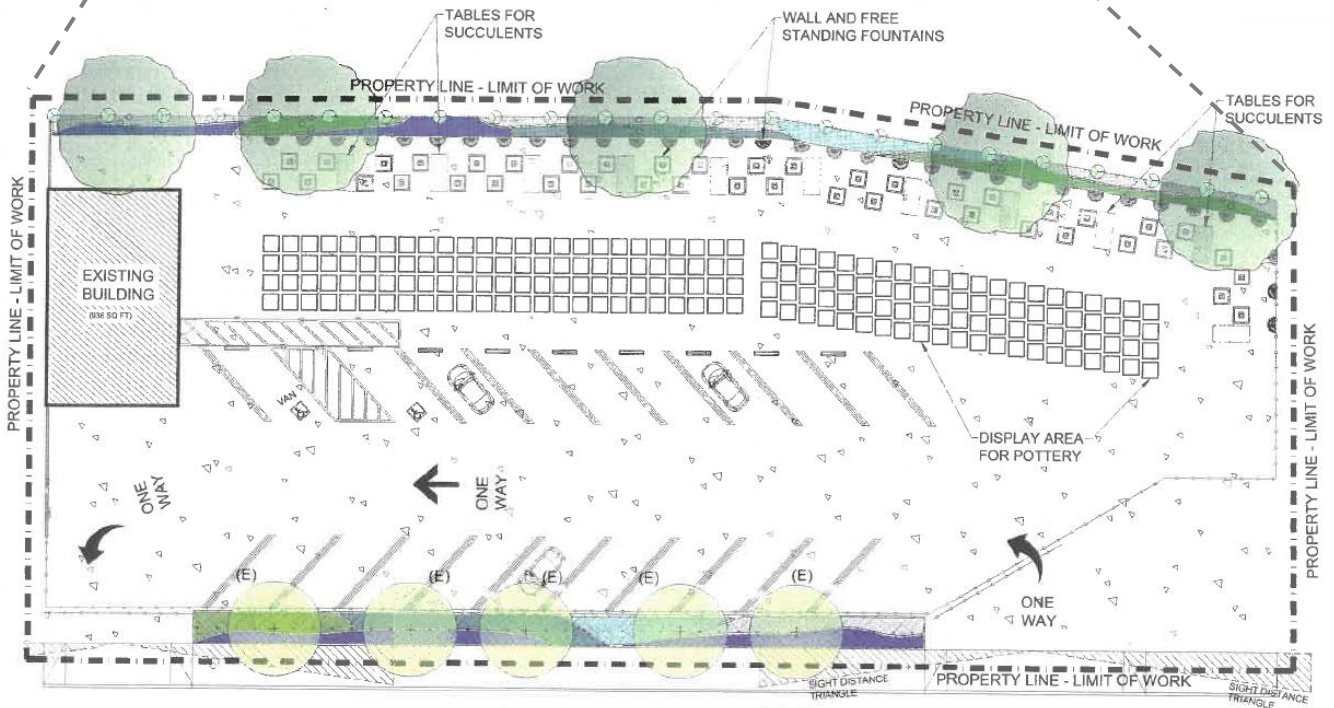
No warranty of representation, express or implied, is made as to the accuracy of the information herein, and same is submitted subject to errors, omissions, change of price, rental or other conditions, withdrawal without notice and to any special listing conditions, imposed by our principals.

# FOR LEASE

# OUTDOOR YARD + SHOWROOM



## SOUTH I-5 FREEWAY



## CAMINO CAPISTRANO

**PAUL ROOT**

Partner

Broker Lic. 01478228

949.874.5698

paul@mspcre.com



No warranty of representation, express or implied, is made as to the accuracy of the information herein, and same is submitted subject to errors, omissions, change of price, rental or other conditions, withdrawal without notice and to any special listing conditions, imposed by our principals.