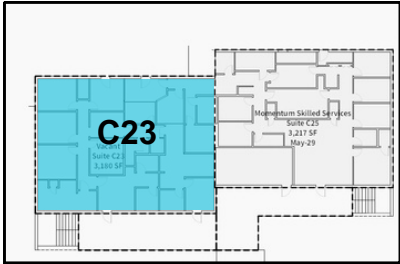
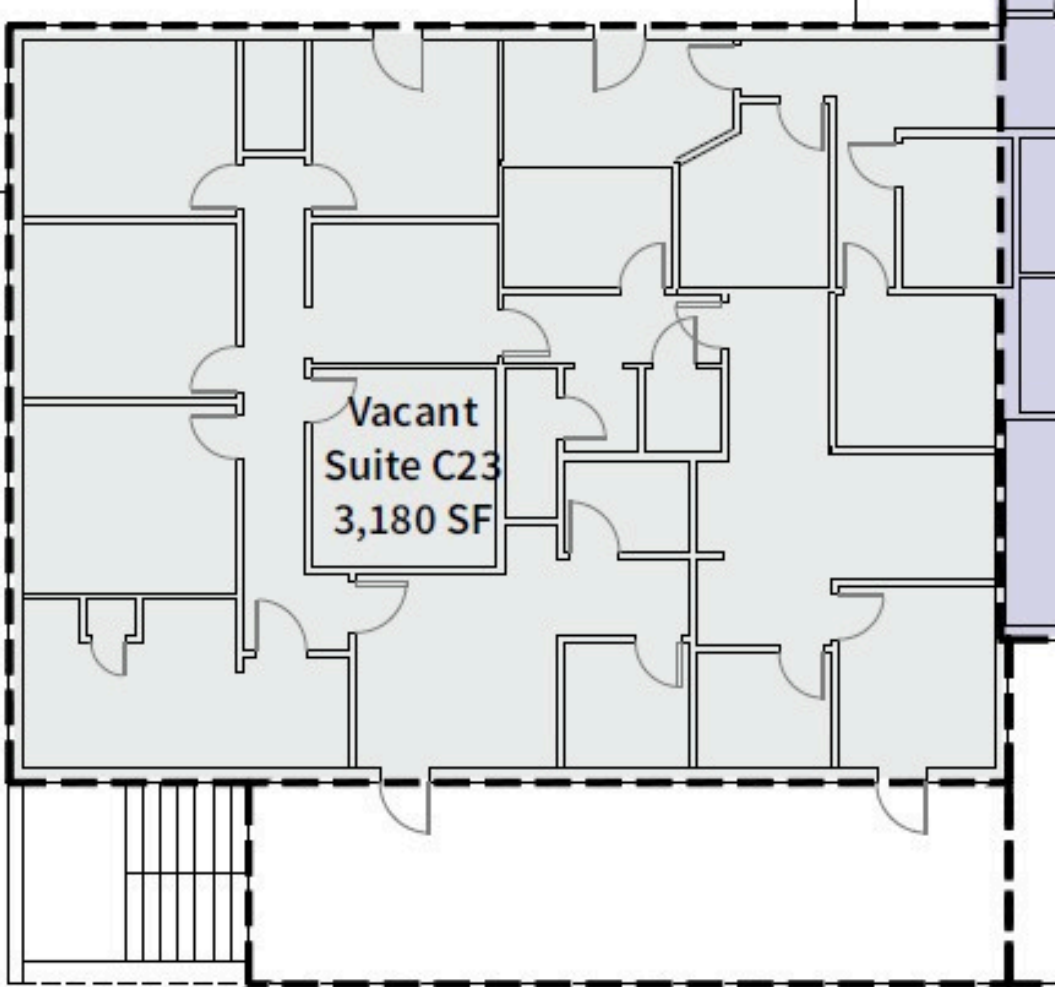


DIMENSIONAL PLAN



2nd Floor



Suite C23
3,180 SF

Floor plans are for conceptual purposes only; they are not to scale and may not reflect existing conditions. As-builts must be verified. Not for regulatory approval, permitting, or construction.

Twelve Oaks Professional Center
11623 & 11645 Angus Road,
Austin, TX 78759