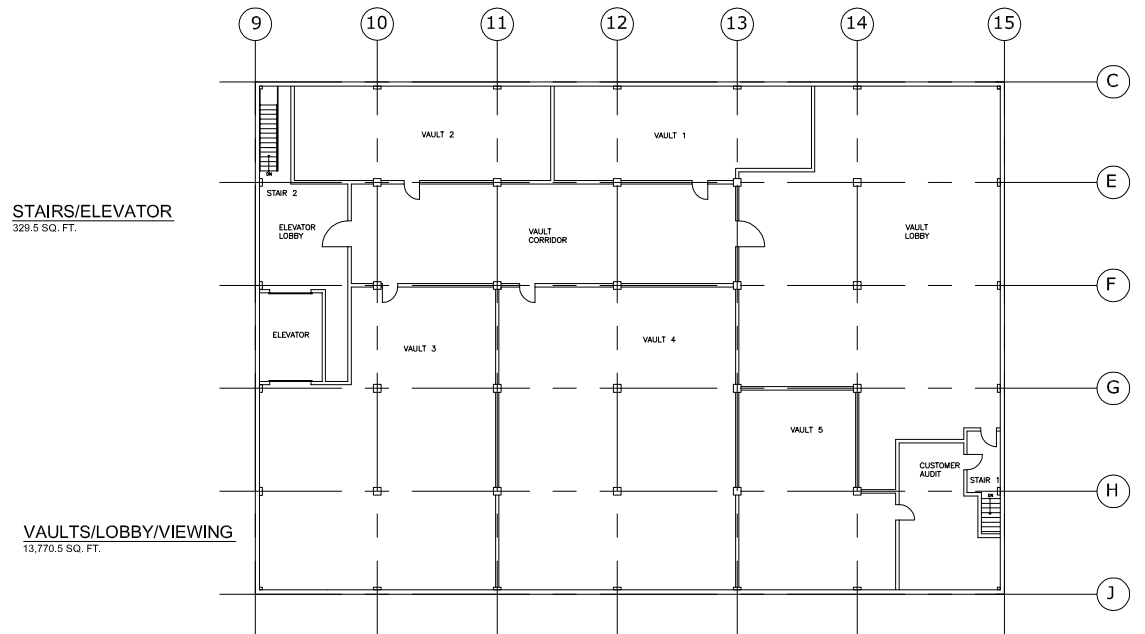
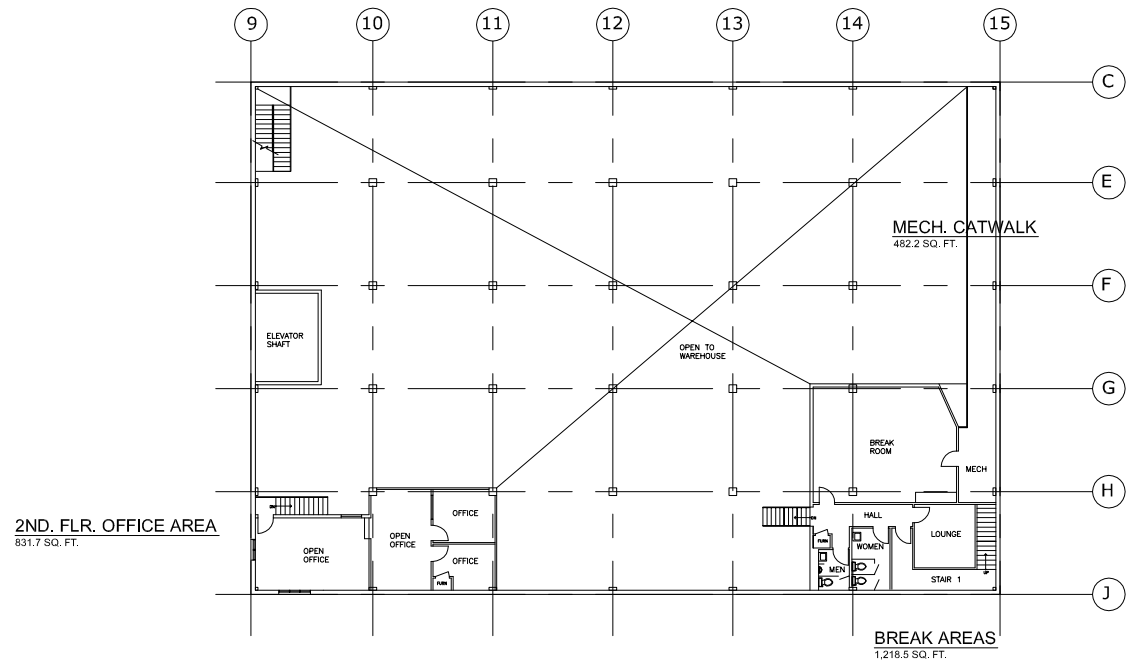


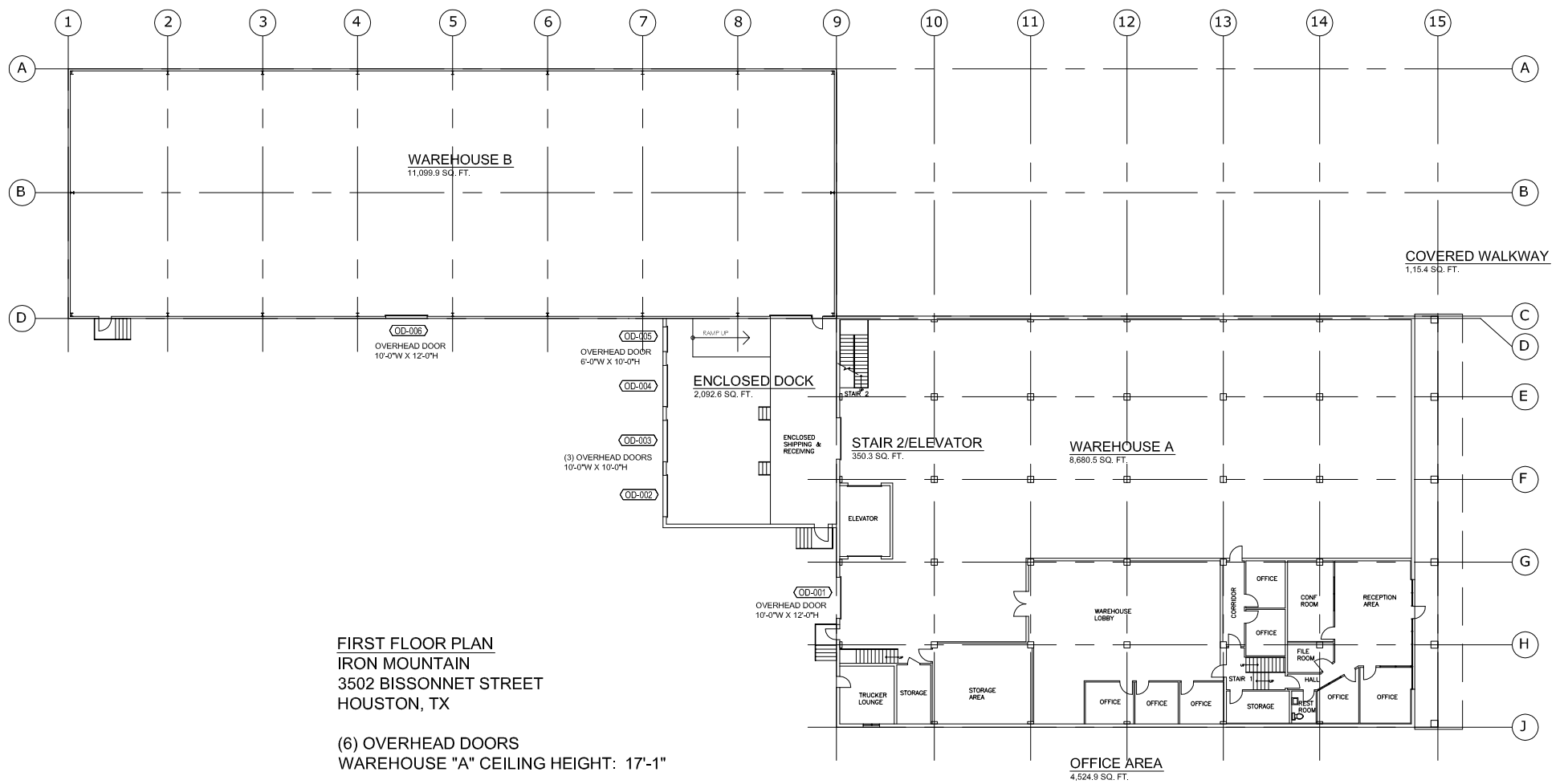
THIRD FLOOR PLAN
IRON MOUNTAIN
3502 BISSONNET STREET
HOUSTON, TX



SECOND FLOOR PLAN
IRON MOUNTAIN
3502 BISSONNET STREET
HOUSTON, TX



FIRST FLOOR PLAN
IRON MOUNTAIN
3502 BISSONNET STREET
HOUSTON, TX



(6) OVERHEAD DOORS
WAREHOUSE "A" CEILING HEIGHT: 17'-1"

IRON MOUNTAIN - 3502 BISSONNET ST., HOUSTON TX - GROSS AREAS

	COVERED WALKWAY	OFFICE AREA	WAREHOUSE A	STAIR 2/ELEVATOR	ENCLOSED DOCK	WAREHOUSE B	MECH.	BREAK AREAS	VAULTS/LOBBY/VIEWING	INTERIOR GROSS AREA	EXTERIOR GROSS AREA
1ST FLOOR	1,151.4 SQ. FT.	4,524.9 SQ. FT.	8,680.5 SQ. FT.	350.3 SQ. FT.	2,092.6 SQ. FT.	11,099.9 SQ. FT.				27899.6 SQ. FT.	28,484.8 SQ. FT.
2ND FLOOR		831.7 SQ. FT.					482.2 SQ. FT.	1,218.5 SQ. FT.		2532.4 SQ. FT.	2,532.4 SQ. FT.
3RD FLOOR				329.5 SQ. FT.					13,770.5 SQ. FT.	14100.0 SQ. FT.	14,506.5 SQ. FT.
BUILDING TOTALS										44,532.0 SQ. FT.	45,523.7 SQ. FT.