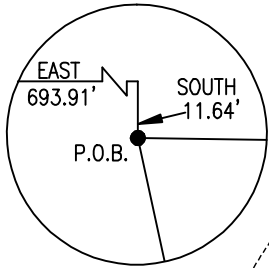
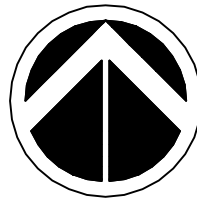


DETAIL
N.T.S.



RANKIN PARKWAY PROP.
003-0-00-W
DB 900 PG 209



SECTION 7 T5N R2E

SECTION 18 T5N R2E

POINT OF COMMENCEMENT
FOUND 2" SOLID IRON BAR MARKING
THE N.W. CORNER OF SECTION 18
T5N-R2E, CITY OF FLOWOOD, RANKIN
COUNTY, MISSISSIPPI

118+35.000
110.00' LT.
N12°06'49"W
50.00'
117+85.000
110.00' LT.

FORESTRY SUPPLIERS
002-0-00-W
DB 549 PG 116

CITY OF FLOWOOD
CITY OF PEARL

STATE HWY COMM.
40' DRAINAGE EASEMENT
D.B. 537 PG. 239

CITY OF PEARL
15' SEWER EASEMENT
D.B. 533 PG. 419

MORRIS GRAY
001-0-00-W
D.B. 983 PG. 66

109+30.000
110.00' RT.

S01°46'52"E
16.85'

107+31.241
270.00' RT.

B.O.P. PHASE 2
STA. 106+75.00
STA. 106+37.967 S.R. 477
(WEST RANKIN PARKWAY)
STA. 106+37.976 S.R. 468 (PEARSON ROAD)
STA. 20+00.000 U.S. 80

GRAPHIC SCALE



(IN FEET)
1 inch = 200 ft.

ROSS
FURNITURE

PROPOSED CENTERLINE OF WEST RANKIN PARKWAY
NO ACCESS LINE

NO ACCESS LINE

CITY OF FLOWOOD
CITY OF PEARL

CENTERLINE US HIGHWAY 80

THE BEARINGS ON THIS PLAT ARE BASED ON THE MISSISSIPPI
STATE PLANE COORDINATE SYSTEM, WEST ZONE, NAD 83, GRID
VALUES AS DERIVED BY STATIC GPS OBSERVATIONS OF NGS
CONTROL POINT Y 362, USING A COMBINED FACTOR OF
0.999941387 AND A CONVERGENCE ANGLE OF
00°06'33.02944"

AREA OF ROADWAY
RIGHTS-OF-WAY REQUIRED,
TOTAL = 301,168 SQ. FT.
6.91 ACRES

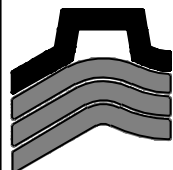
LEGEND

- R.O.W RIGHT OF WAY
- F.I.P. FOUND IRON PIN
- S.I.P. SET IRON PIN
- E- UNDERGROUND POWER
- P- OVERHEAD POWER LINE
- MON. MONUMENT
- P.O.B. POINT OF BEGINNING
- IRON PIN FOUND
- IRON PIN SET

CLASS "B" SURVEY

REFERENCE MATERIALS
TAX AND CHANCERY RECORDS

DATE OF FIELD SURVEY: APRIL, 2005



Pickering Firm
Incorporated

Transportation • Facilities
Water Resources • Civil
Environmental

180 Country Place Pkwy.
Pearl, MS 39208

601.932.7878
601.932.8789 fax

PLAT OF SURVEY FOR FORESTRY SUPPLIERS WEST RANKIN PARKWAY PROJ. # 104422/201000 RANKIN COUNTY, MS

PARCEL	EXHIBIT	PROJECT #	16551.00	SHEET #
SCALE	1"=200'	DATE	JULY 7, 2010	1