

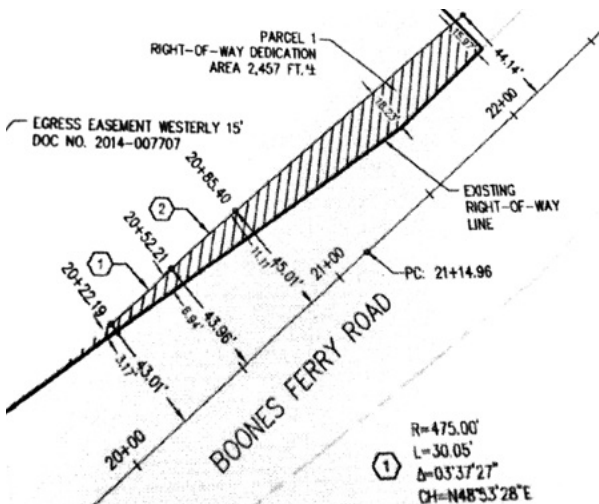


Lake Oswego Commercial Building

16365 BOONES FERRY ROAD
LAKE OSWEGO, OR 97035

\$2,500,000

Prime location and high visibility.
A perfect investment for owner user!



- Approx. 3,139 sq ft
- Lot size: 0.62 acre per county record (see deed dedication in 2018)
- Built in 1980 and remodeled
- Annual real estate taxes: \$25,946.00
- Zone: GC
- Vacant as of 5/15/26
- Tax ID 191557740
- RMLS #191557740



BROKERS REALTY, INC.

MARIAN HSU, PRINCIPAL BROKER, (503) 781-7818
OFFICE (503) 292-5600 EXT 103