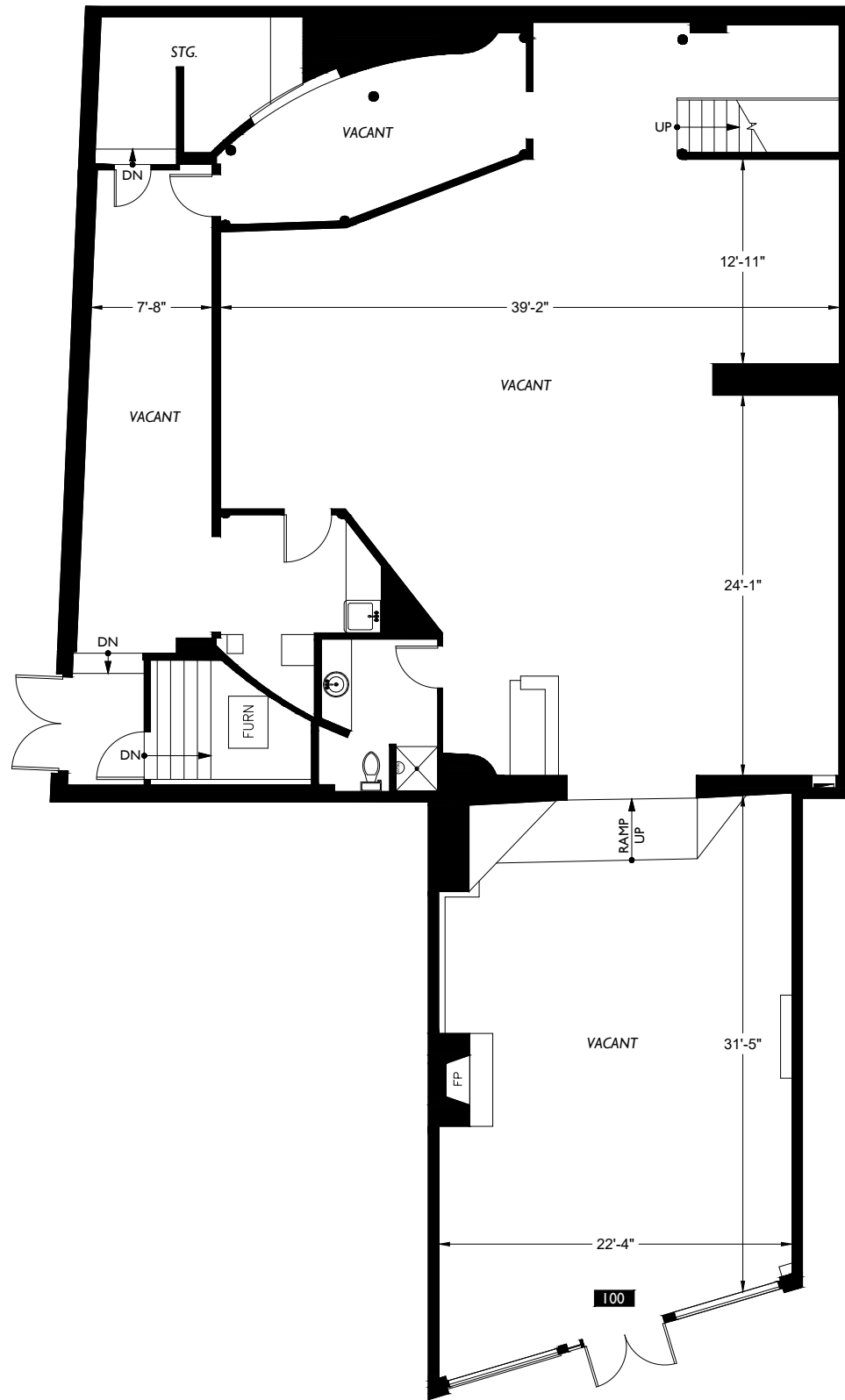
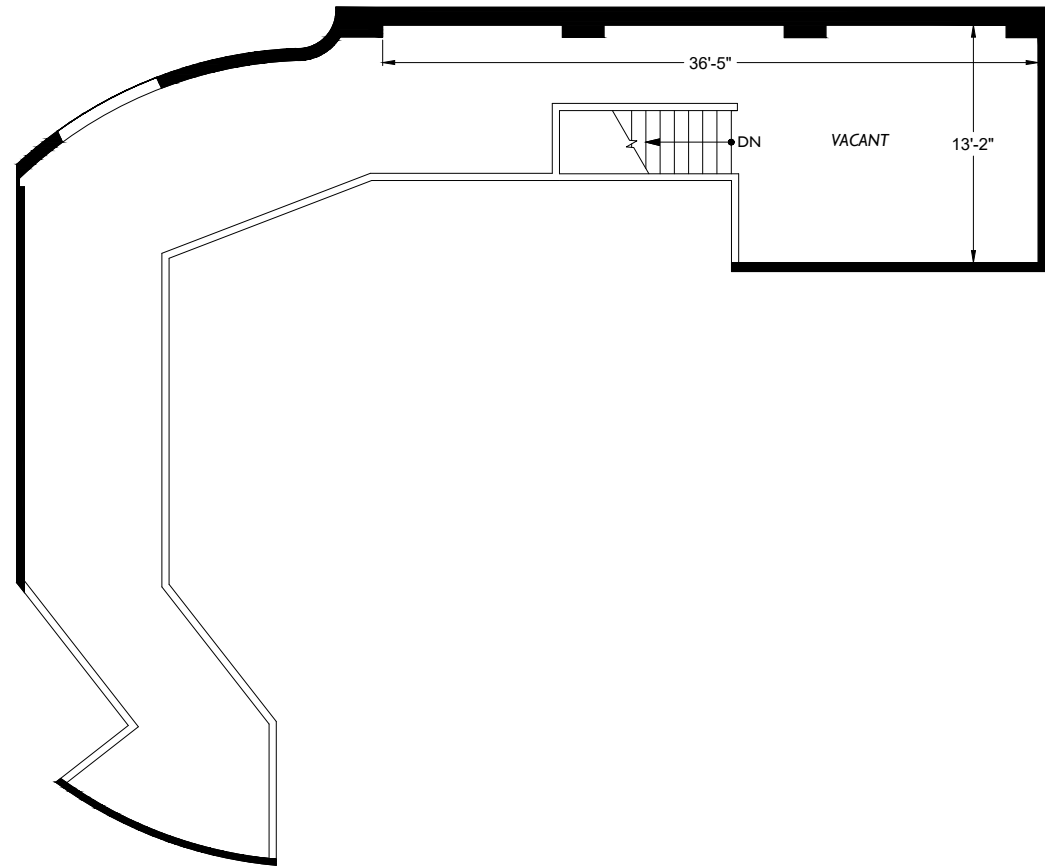


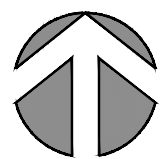
# FLOOR I



# MEZZANINE



Central Way



LRS Group LLC 550 Kirkland Way, Suite 100B Kirkland, WA 98033	Retail Suite 108 Central Way Kirkland, WA 98033	Client
2DFLOORPLANS.COM 425-677-7511	AS-BUILT FLOOR PLANS	Subject
600 NW Gilman Blvd. Suite E Issaquah, WA 98027	Floor Plan 1	Floor
Measured: October 2019	Scale 0 6 12	Project: C19-973