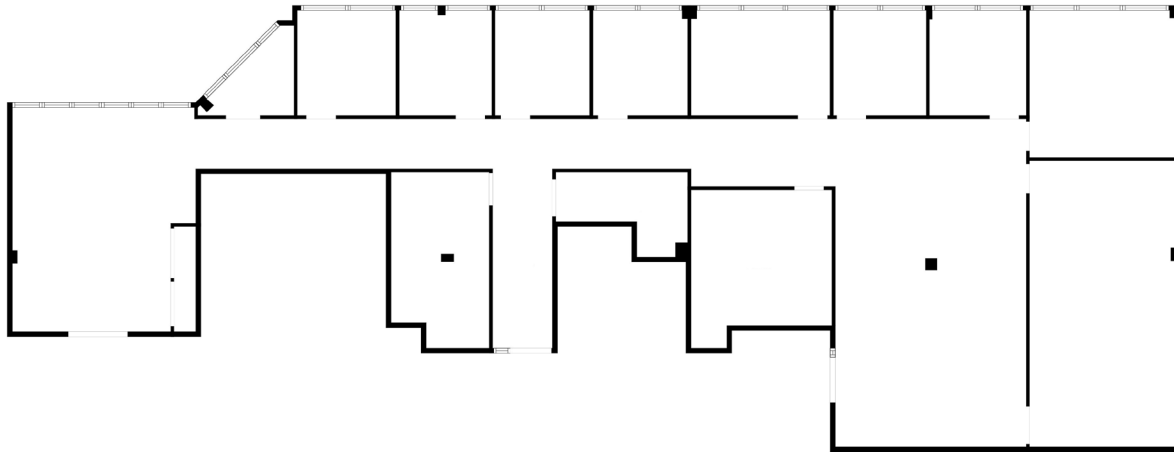


# SUITE 207 | 4,500 SF (Divisible to 1,500 SF)

1952 McDowell Rd \ Naperville, IL



## SPACE NOTES

- Office, Medical and Dental Uses
- Divisible to +/- 1,500 SF
- 10 Private Offices
- Open Space for Workstations
- Break Room
- Double Glass Entry Doors



**RYAN MOEN, SIOR**  
630.480.6346  
[RMoen@VersaRES.com](mailto:RMoen@VersaRES.com)

**STEVEN REA**  
630.468.1780  
[SRea@VersaRES.com](mailto:SRea@VersaRES.com)

**JOHN MILLNER, CCIM**  
630.480.6342  
[JMillner@VersaRES.com](mailto:JMillner@VersaRES.com)

1 MID AMERICA PLAZA, 3RD FLOOR  
OAKBROOK TERRACE, IL 60181  
630.480.6413

EXCLUSIVELY LISTED BY  
**VERSA**  
REAL ESTATE SERVICES