

FOR LEASE

3600 WEST PIERCE STREET MILWAUKEE, WI 53215



CONTACT

LUKE FEHRENBACH
lukef@ogdenre.com
262-312-4865

RICHARD REINDERS
richardr@ogdenre.com
414-719-7899

FIRST FLOOR FLEX SPACE AVAILABLE FOR LEASE

3600 WEST PIERCE STREET
MILWAUKEE, WI 53215

LEASE RATE

\$3,800 per MONTH GROSS

SQUARE FOOTAGE: 3,407 SF

CONSTRUCTION: Masonry

POWER: 3-phase (TBV)

HVAC: Forced air

UTILITIES: Tenant separately metered for electricity

COMMENTS: 3,407 SF of Office/Flex Space available for Lease at Valley View Commons. First floor commercial space available. Located in the Menomonee Valley and Silver City, Valley View Commons has quick access to the Hank Aaron Trail, American Family Field, and the Stadium Freeway interchange. The available space features cream city brick, exposed ductwork, and steel beams. 3 Phase power available as well as 10 ft clear.

Ogden

The information furnished regarding this property is from sources deemed reliable, but no warranty or representation is made to the accuracy thereof and is subject to errors, omissions, changes of price or other conditions or withdrawal without notice.

1665 N. Water Street | Milwaukee, WI | 53202
Telephone: 414-276-5285 | Fax: 800-787-4205
www.ogdenre.com

ADDITIONAL PHOTOS | 3600 W. PIERCE STREET



CONTACT

LUKE FEHRENBACH
lukef@ogdenre.com
262-312-4865

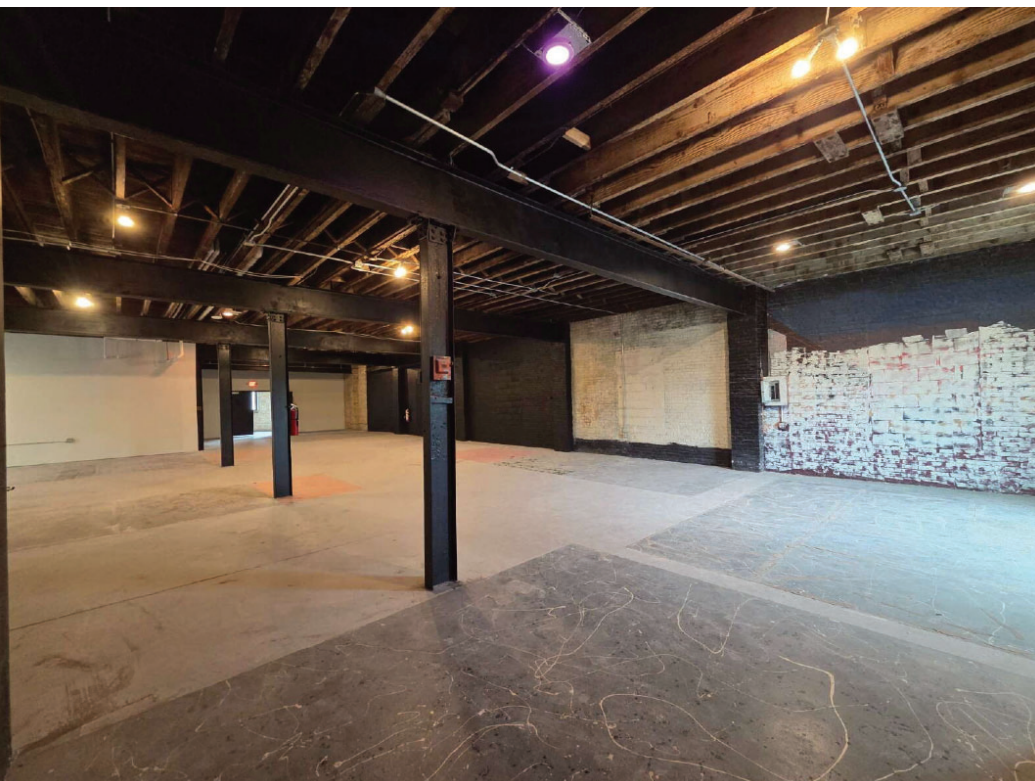
RICHARD REINDERS
richardr@ogdenre.com
414-719-7899

Ogden

The information furnished regarding this property is from sources deemed reliable, but no warranty or representation is made to the accuracy thereof and is subject to errors, omissions, changes of price or other conditions or withdrawal without notice.

1665 N. Water Street | Milwaukee, WI | 53202
Telephone: 414-276-5285 | Fax: 800-787-4205
www.ogdenre.com

ADDITIONAL PHOTOS | 3600 W. PIERCE STREET



CONTACT

LUKE FEHRENBACH

lukef@ogdenre.com
262-312-4865

RICHARD REINDERS

richardr@ogdenre.com
414-719-7899

The information furnished regarding this property is from sources deemed reliable, but no warranty or representation is made to the accuracy thereof and is subject to errors, omissions, changes of price or other conditions or withdrawal without notice.

Ogden

1665 N. Water Street | Milwaukee, WI | 53202
Telephone: 414-276-5285 | Fax: 800-787-4205
www.ogdenre.com

MAP | 3600 W. PIERCE STREET



CONTACT

LUKE FEHRENBACH
lukef@ogdenre.com
262-312-4865

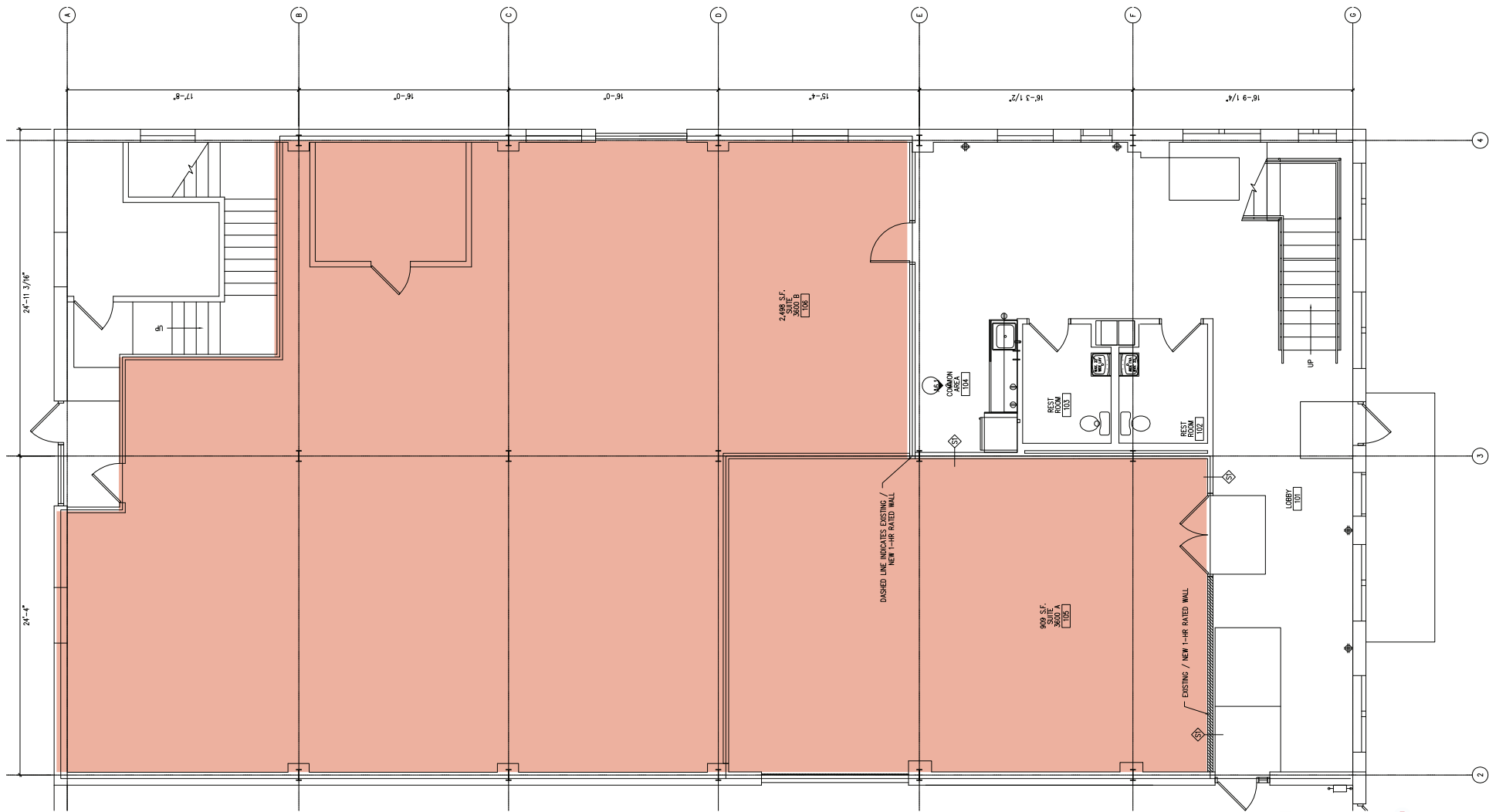
RICHARD REINDERS
richardr@ogdenre.com
414-719-7899

Ogden

The information furnished regarding this property is from sources deemed reliable, but no warranty or representation is made to the accuracy thereof and is subject to errors, omissions, changes of price or other conditions or withdrawal without notice.

1665 N. Water Street | Milwaukee, WI | 53202
Telephone: 414-276-5285 | Fax: 800-787-4205
www.ogdenre.com

FLOOR PLAN | 3600 W. PIERCE STREET



The information furnished regarding this property is from sources deemed reliable, but no warranty or representation is made to the accuracy thereof and is subject to errors, omissions, changes of price or other conditions or withdrawal without notice.

1665 N. Water Street | Milwaukee, WI | 53202
Telephone: 414-276-5285 | Fax: 800-787-4205
www.ogdenre.com

DEMOGRAPHICS | 3600 W. PIERCE STREET



CITY, STATE

Milwaukee, WI

POPULATION

317,854

AVG. HH SIZE

2.64

MEDIAN HH INCOME

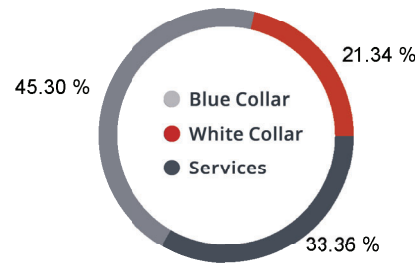
\$39,625

HOME OWNERSHIP

Renters: **67,911**

Owners: **50,433**

EMPLOYMENT



42.90 %
Employed

2.49 %
Unemployed

EDUCATION

High School Grad: **27.16 %**

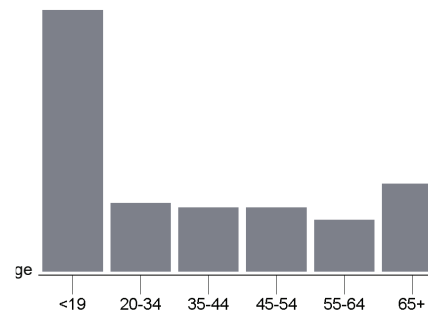
Some College: **19.98 %**

Associates: **5.34 %**

Bachelors: **20.16 %**

GENDER & AGE

49.57 % **50.43 %**



RACE & ETHNICITY

White: **27.61 %**

Asian: **1.57 %**

Native American: **0.28 %**

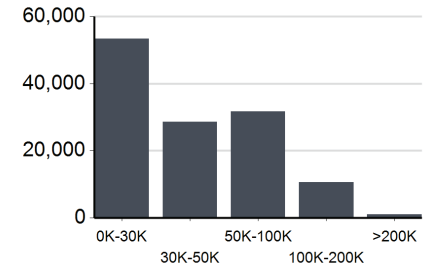
Pacific Islanders: **0.01 %**

African-American: **7.82 %**

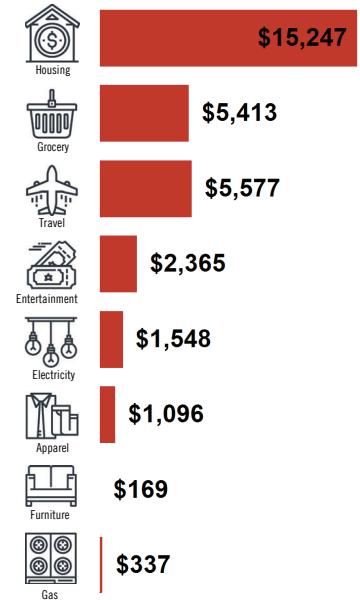
Hispanic: **39.87 %**

Two or More Races: **22.84 %**

INCOME BY HOUSEHOLD



HH SPENDING



The information furnished regarding this property is from sources deemed reliable, but no warranty or representation is made to the accuracy thereof and is subject to errors, omissions, changes of price or other conditions or withdrawal without notice.

1665 N. Water Street | Milwaukee, WI | 53202
Telephone: 414-276-5285 | Fax: 800-787-4205
www.ogdenre.com

BROKER DISCLOSURE TO NON-RESIDENTIAL CUSTOMERS

EFFECTIVE JULY 1, 2016



1 Prior to negotiating on your behalf the brokerage firm, or an agent associated with the firm, must
2 provide you the
3 following disclosure statement:
4 **DISCLOSURE TO CUSTOMERS** You are a customer of the brokerage firm (hereinafter Firm). The
5 Firm is either an agent
6 of another party in the transaction or a subagent of another firm that is the agent of another
7 party in the transaction. A
8 broker or a salesperson acting on behalf of the Firm may provide brokerage services to you.
9 Whenever the Firm is
10 providing brokerage services to you, the Firm and its brokers and salespersons
11 (hereinafter Agents) owe you, the
12 customer, the following duties:
13 (a) The duty to provide brokerage services to you fairly and honestly.
14 (b) The duty to exercise reasonable skill and care in providing brokerage services to you.
15 (c) The duty to provide you with accurate information about market conditions within a reason-
16 able time if you request
17 it, unless disclosure of the information is prohibited by law.
18 (d) The duty to disclose to you in writing certain Material Adverse Facts about a property, unless
19 disclosure of the
20 information is prohibited by law (see lines 42-51).
21 (e) The duty to protect your confidentiality. Unless the law requires it, the Firm and its Agents will
22 not disclose your
23 confidential information or the confidential information of other parties (see lines 23-41).
24 (f) The duty to safeguard trust funds and other property held by the Firm or its Agents.
25 (g) The duty, when negotiating, to present contract proposals in an objective and unbiased man-
26 ner and disclose the
27 advantages and disadvantages of the proposals.
28 Please review this information carefully. An Agent of the Firm can answer your questions about
29 brokerage services,
30 but if you need legal advice, tax advice, or a professional home inspection, contact an attorney,
31 tax advisor, or home
32 inspector. This disclosure is required by section 452.135 of the Wisconsin statutes and is for
33 information only. It is a
34 plain-language summary of the duties owed to a customer under section 452.133(1) of the Wis-
35 consin statutes.

36 **CONFIDENTIALITY NOTICE TO CUSTOMERS** The Firm and its Agents will keep confidential any
37 information given to the
38 Firm or its Agents in confidence, or any information obtained by the Firm and its Agents that a
39 reasonable person
40 would want to be kept confidential, unless the information must be disclosed by law or you autho-
41 rize the Firm to
42 disclose particular information. The Firm and its Agents shall continue to keep the information
43 confidential after the
44 Firm is no longer providing brokerage services to you.

28 The following information is required to be disclosed by law:
29 1. Material Adverse Facts, as defined in Wis. Stat. § 452.01(5g) (see lines 42-51).
30 2. Any facts known by the Firm or its Agents that contradict any information included in a written
31 inspection
32 report on the property or real estate that is the subject of the transaction.
33 To ensure that the Firm and its Agents are aware of what specific information you consider confi-
34 dential, you may
35 list that information below (see lines 35-41) or provide that information to the Firm or its Agents
36 by other means. At a
37 later time, you may also provide the Firm or its Agents with other Information you consider to be
38 confidential.

39 **CONFIDENTIAL INFORMATION:** _____
40 _____
41 _____

42 **NON-CONFIDENTIAL INFORMATION** (the following information may be disclosed by the Firm and
43 its Agents): _____
44 _____
45 _____

46 (Insert information you authorize to be disclosed, such as financial qualification information.)

47 **DEFINITION OF MATERIAL ADVERSE FACTS**
48 A "Material Adverse Fact" is defined in Wis. Stat. § 452.01(5g) as an Adverse Fact that a party
49 indicates is of such
50 significance, or that is generally recognized by a competent licensee as being of such significance
51 to a reasonable
52 party, that it affects or would affect the party's decision to enter into a contract or agreement
53 concerning a transaction
54 or affects or would affect the party's decision about the terms of such a contract or agreement.
55 An "Adverse Fact" is defined in Wis. Stat. § 452.01(1e) as a condition or occurrence that a com-
56 petent licensee
57 generally recognizes will significantly and adversely affect the value of the property, significantly
58 reduce the structural
59 integrity of improvements to real estate, or present a significant health risk to occupants of the
60 property; or information
61 that indicates that a party to a transaction is not able to or does not intend to meet his or her
62 obligations under a
63 contract or agreement made concerning the transaction.

64 **NOTICE ABOUT SEX OFFENDER REGISTRY** You may obtain information about the sex offender
65 registry and persons
66 registered with the registry by contacting the Wisconsin Department of Corrections on the Inter-
67 net at
68 <http://www.doc.wi.gov> or by telephone at 608-240-5830.

No representation is made as to the legal validity of any provision or the
adequacy of any provision in any specific transaction.
Copyright © 2016 by Wisconsin REALTORS® Association
Drafted by Attorney Debra Peterson Conrad



The information furnished regarding this property is from sources deemed reliable, but no warranty or representation is made to the accuracy thereof and is subject to errors, omissions, changes of price or other conditions or withdrawal without notice. Some photos in this marketing material may have been digitally enhanced or edited using AI to improve image quality. They are intended for illustrative purposes only and may not represent exact conditions.

Ogden & Company, Inc. | 1665 N. Water Street | Milwaukee, WI | 53202
Telephone: 414-276-5285 | Fax: 800-787-4205
www.ogdenre.com