



ATTRIBUTES

81,706

POPULATION

3.8

AVERAGE HOUSEHOLD SIZE

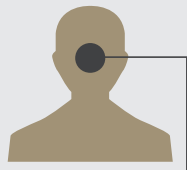
28.0

MEDIAN AGE

BUSINESS



824
BUSINESSES



11,202
EMPLOYEES

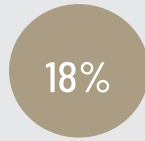
EMPLOYMENT



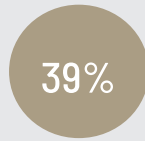
EDUCATION



NO HIGH SCHOOL DIPLOMA



HIGH SCHOOL DIPLOMA



SOME COLLEGE



BACHELORS/GRADUATE DEGREE

INCOME

\$107,911

MEDIAN HOUSEHOLD INCOME

\$293,474

MEDIAN NET WORTH

\$32,883

PER CAPITA INCOME

HOUSEHOLDS BY INCOME

Indicator	Value	Difference	
< \$15,000	1.5%	-5.0%	
\$15,000 - \$24,999	2.5%	-2.9%	
\$25,000 - \$34,999	2.5%	-3.7%	
\$35,000 - \$49,999	5.7%	-4.3%	
\$50,000 - \$74,999	15.0%	-2.6%	
\$75,000 - \$99,999	15.6%	+0.7%	
\$100,000 - \$149,999	29.1%	+8.2%	
\$150,000 - \$199,999	16.3%	+6.2%	
\$200,000 +	11.8%	+3.3%	

Bars Show Deviation from 49035 (Salt Lake County)

CENTURY 21
COMMERCIAL.

Everest

KEY DATA

TETON CENTER
6039 - 6085 W 11800 S,
Herriman, Utah 84096

FOR LEASE

LAND LEASE | BUILD TO SUIT | 800 TO 15,000 SQFT AVAILABLE

**SWEN
NIELSEN**

801.414.6575

SWEN@TRAVERSEADVISORS.COM

**BRANDON
JOHNSON**

801.815.6464

BRANDON@TRAVERSEADVISORS.COM

