

LEGEND:

ROOM	ROOM NAME & NUMBER
	ROOM NAME & NUMBER
	PARTITION TYPE TAG SEE GN1.1 FOR PARTITION LEGEND. SEE NOTES (THIS SHEET) FOR MORE INFORMATION. ALL UNIT INTERIOR PARTITIONS SHALL BE PARTITION TYPE "1" UNLESS OTHERWISE NOTED
	DOOR NUMBER SEE DOOR SCHEDULE, DWG. A2.1 FOR FURTHER INFORMATION.
	CURTAINWALL / STOREFRONT TAG REFER TO SHEET A2.2 & A2.3 FOR GLAZING DETAILS
	DETAIL TAG
	INDICATES CHANGE IN FLOOR ELEVATION
	TRANSITION SYMBOL
	FIRE RATED SEMI-RECESSED FIRE EXTINGUISHER CABINET BY LARSEN'S MANUF. CO. FIRE EXTINGUISHER: 10# ABC DRY CHEMICAL. INSTALLED BY CONTRACTOR @ 3,000 SF (FOR LOW HAZARD OCCUPANCY) & AT 75 FT. MAX DISTANCE BETWEEN EXTINGUISHERS. VERIFY LOCATIONS W/ LOCAL FIRE SUBCODE OFFICIAL. PROVIDE SIGNS OR ARROWS TO HELP INDICATE WHERE LOCATED. COORDINATE REQUIREMENT W/ SIGNAGE CONSULTANT/ CONTRACTOR

- GENERAL NOTES:**
- EXTERIOR WALL DIMENSIONS ARE FROM: SHALL BE FROM EXTERIOR FACE OF METAL STUD TO CENTERLINE OF COLUMN GRID. (UNLESS OTHERWISE SHOWN ON DETAILED PLANS)
 - VERIFY ROUGH OPENINGS & COORDINATE W/ EXTERIOR FINISH INSTALLATION.
 - ALL ANGLES ON PLANS ARE 90 DEGREE UNLESS NOTED OTHERWISE.
 - HINGE SIDE OF DOOR OPENINGS SHALL BE 4" FROM FINISH FACE OF PERPENDICULAR WALL, UNLESS DIMENSIONED OTHERWISE.
 - REFER TO MEP DRAWINGS FOR ADDITIONAL NOTES & INFORMATION.
 - REFER TO STRUCTURAL DRAWINGS FOR STRUCTURAL FRAMING SIZES, CONNECTION DETAILS & ALL RELATED NOTES.
 - REFER TO STRUCTURAL DRAWINGS FOR EXTERIOR WALL OPENING LITEL DETAILS. REFER TO PARTITION NOTES GN1.4 FOR MORE INFORMATION.
 - INTERIOR FINISHES SHALL BE BY FUTURE TENANT.

2	CORE & SHELL BID BULL 02	11-01-22
1	CORE & SHELL BID BULL 01	9-26-22
0	CORE & SHELL BID SETS	6-10-22
NO.	REVISION	DATE

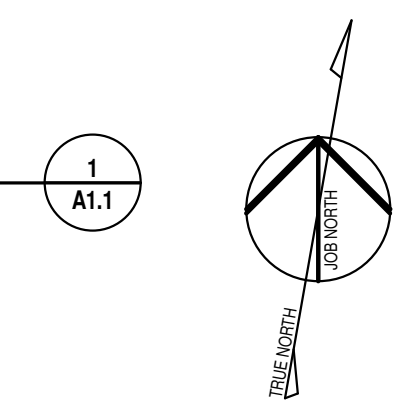
BASEMENT FLOOR PLAN

PROPOSED ALTERATION
DENHOLTZ BUILDING

140-148 BROAD STREET, REDBANK NJ



BASEMENT
SCALE: 1/8" = 1'-0"



FLOOR PLAN KEY NOTES:

- THE CONTRACTOR SHALL PROVIDE THE FOLLOWING ONLY AT LOCATIONS SHOWN ON THE FLOOR PLAN. FLOOR PLAN NOTES ARE DESIGNATED BY SYMBOL: (1)
- BLOCK OFF EXISTING OPENING. EXTERIOR SIDE: PROVIDE NEW EXTERIOR SHEATHING ON 6" METAL STUD FRAMING W/ FULL THK BATT INSULATION. MATCH OR ALIGN FACE OF NEW SHEATHING W/ ADJACENT EXISTING AS REQUIRED TO PROVIDE A FLUSH SUBSTRATE TO RECEIVED NEW FACADE FINISH ASSEMBLY. INTERIOR SIDE: PROVIDE 5/8" THK GYP ON STUD FRAMING OR FURRING. FACE OF GYP TO MATCH OR ALIGN W/ ADJACENT EXISTING AS REQUIRED TO PROVIDE A FLUSH SUBSTRATE TO RECEIVED NEW INTERIOR FINISHES. (VERIFY W/ INTERIOR FIT-OUT DRAWINGS)
 - SAME AS NOTE #1
 - PROVIDE OPENING TO RUN STORM DRAIN VERTICAL PIPE AT INTERIOR SIDE. REFER TO PLUMBING DRAWINGS FOR MORE INFORMATION. DASHED LINE INDICATE FUTURE GYP BD SURROUND TO MATCH PARTITION TYPE "2A"
 - NEW CONCRETE SLAB ON GRADE TO MATCH ELEVATION OF ADJACENT EXISTING FLOOR SLAB. REFER TO STRUCTURAL DWGS FOR MORE INFO.
 - NEW FLOOR TO MATCH ELEVATION OF ADJACENT EXISTING FLOOR. REFER TO STRUCTURAL DWGS FOR MORE INFO.
 - PROVIDE NEW SIDEWALK PAVERS (BY OTHERS)
 - PROVIDE 5/8" GYPSUM BD ON 1 1/2" FURRING CHANNELS OVER EXISTING WALL OR OVER EXPOSED MASONRY WALL.
 - DASHED LINE INDICATES EXTENT OF CANOPY ABOVE W/ EXPOSED STEEL FLANGE AT PERIMETER. SHOWN FOR REFERENCE ONLY.
 - DASHED LINE INDICATES EXTENT OF CONCRETE PARAPET OVERHANG ABOVE. SHOWN FOR REFERENCE ONLY.
 - NEW CONCEALED ROOF LEADER W/ (FUTURE) GYP BD SURROUND. REFER TO MEP DWGS FOR MORE INFO.
 - CANOPY STORM DRAIN VERTICAL PIPE. VERIFY ACTUAL LOCATION. REFER TO PLUMBING DRAWINGS FOR MORE INFORMATION. COORDINATE LAYOUT W/ STRUCTURAL FRAMING. DASHED LINE INDICATE "FUTURE" GYP BD SURROUND TO MATCH PARTITION TYPE "3"
 - NEW TOILET ROOMS FINISHES SHALL BE:
FLOORS: PORCELAIN TILE
WALLS: CERAMIC TILES/PAINT
BASE: PORCELAIN TILE BASE
CEILING: PAINTED GYP CEILING
* SPECIFICATIONS & DETAILS ARE INCLUDED & PART OF INTERIOR FIT-OUT DRAWING PACKAGE.
 - HALLWAY FINISHES SHALL BE:
FLOOR: CARPET
WALLS: PAINTED
BASE: VINYL BASE
CEILING: PAINTED GYPSUM
* SPECIFICATIONS & DETAILS ARE INCLUDED & PART OF INTERIOR FIT-OUT DRAWING PACKAGE.
 - LOBBY/ VESTIBULE FINISHES SHALL BE:
FLOOR: PORCELAIN TILES
WALLS: PAINTED
BASE: TILE BASE
CEILING: WOOD PLANK
* SPECIFICATIONS & DETAILS ARE INCLUDED & PART OF INTERIOR FIT-OUT DRAWING PACKAGE.
 - PROVIDE DOUBLE CHANNEL STEEL LITEL, INSTALLED PRIOR TO DEMOLITION FOR NEW OPENINGS. CONTRACTOR TO REVIEW MASONRY LITEL CONSTRUCTION SEQUENCE & COORDINATE WITH DEMOLITION CONTRACTOR.
 - GAS METER & GAS RISER LOCATION. REFER TO MEP DRAWINGS FOR MORE INFORMATION.
 - VERIFY EXISTING CONSTRUCTION. MODIFY IF NEEDED TO COMPLY W/ 1HR RATED STAIR ENCLOSURE REQUIREMENTS.

11/1/2022 11:52:09 AM C:\Users\lkontornis\Documents\202120.00_140-148 Broad Street_CURRENT_1_kontornis@rb-arch.com.rvt