

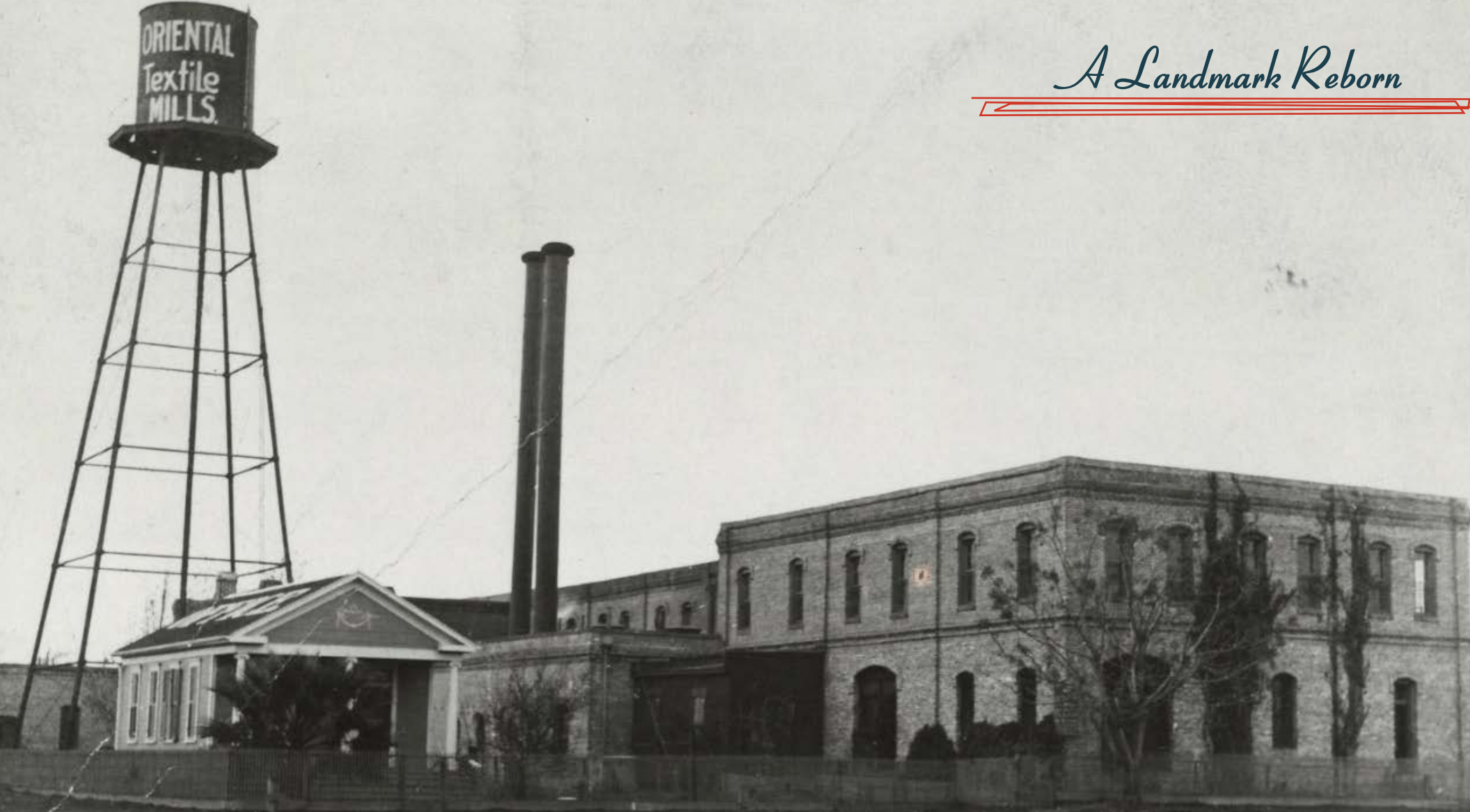
Heights
CLOCKTOWER

Retail Opportunity



611 W. 22nd Street Houston , Tx 77008

A Landmark Reborn



Heights Clock Tower is a historic gem nestled in the highly-desirable Houston Heights neighborhood. Dating back to 1894, it is one of the city's oldest buildings. It originally functioned as a mattress factory and then converted to a textile mill in 1900.

Retail Space Available

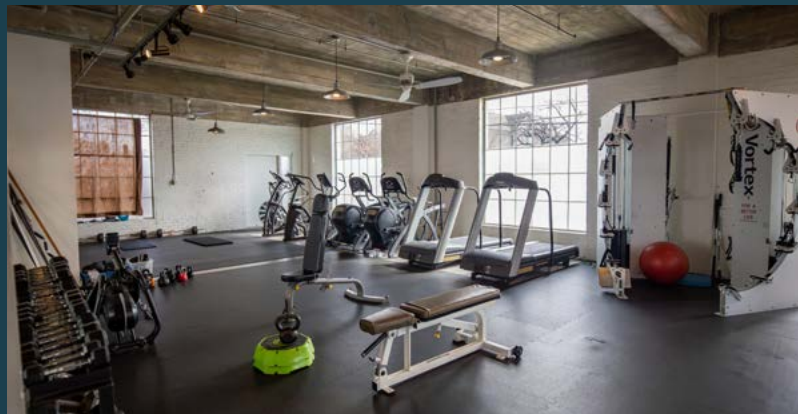
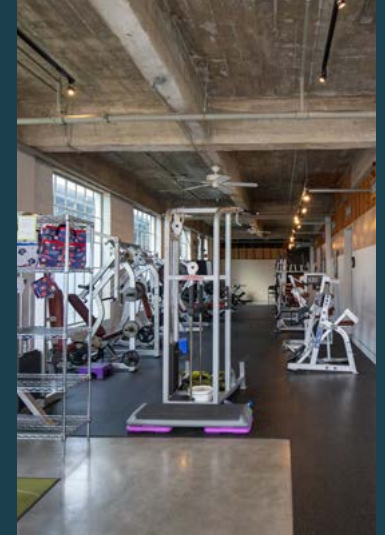


Unique retail opportunity in historic Heights. Industrial charm, tall ceilings and large windows. This training studio has existing restrooms and kitchens. Available all or part. Do not disturb tenant.

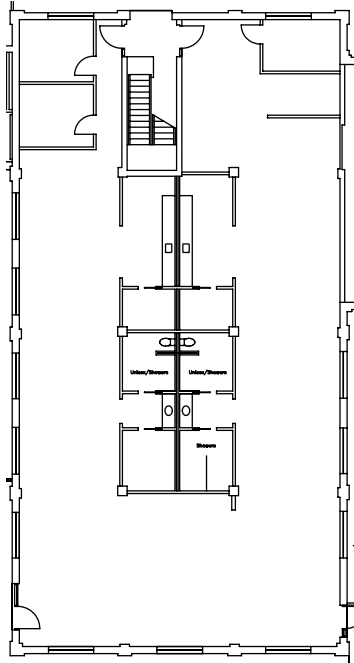
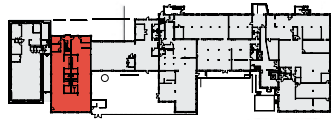
Just steps from Shepherd Drive, the space has access to parking lot on 22nd Street and ample area street parking.

Available October 2025

629-1 West 22nd Street



629 W. 22ND



5,127 SF

1st Floor Retail Space

Available All or Part

Existing Gym Built-Out

- Window wrapped space
- Mostly open floor plan layout
- Tall, exposed ceilings
- Kitchenettes and restrooms
- Signage opportunity on 22nd Street
- Authentic industrial architecture
- Painted exposed brick walls
- Visitor parking immediately outside space and in lot across 22nd street



For More Information
Barton Kelly - 713.783.4444
Barton@radomcapital.com

For More Information
Sidney Whaley - 713.783.4444
Sidney@radomcapital.com

Site Plan

N. Shepherd Dr
↑



Lawrence Street

22nd Street

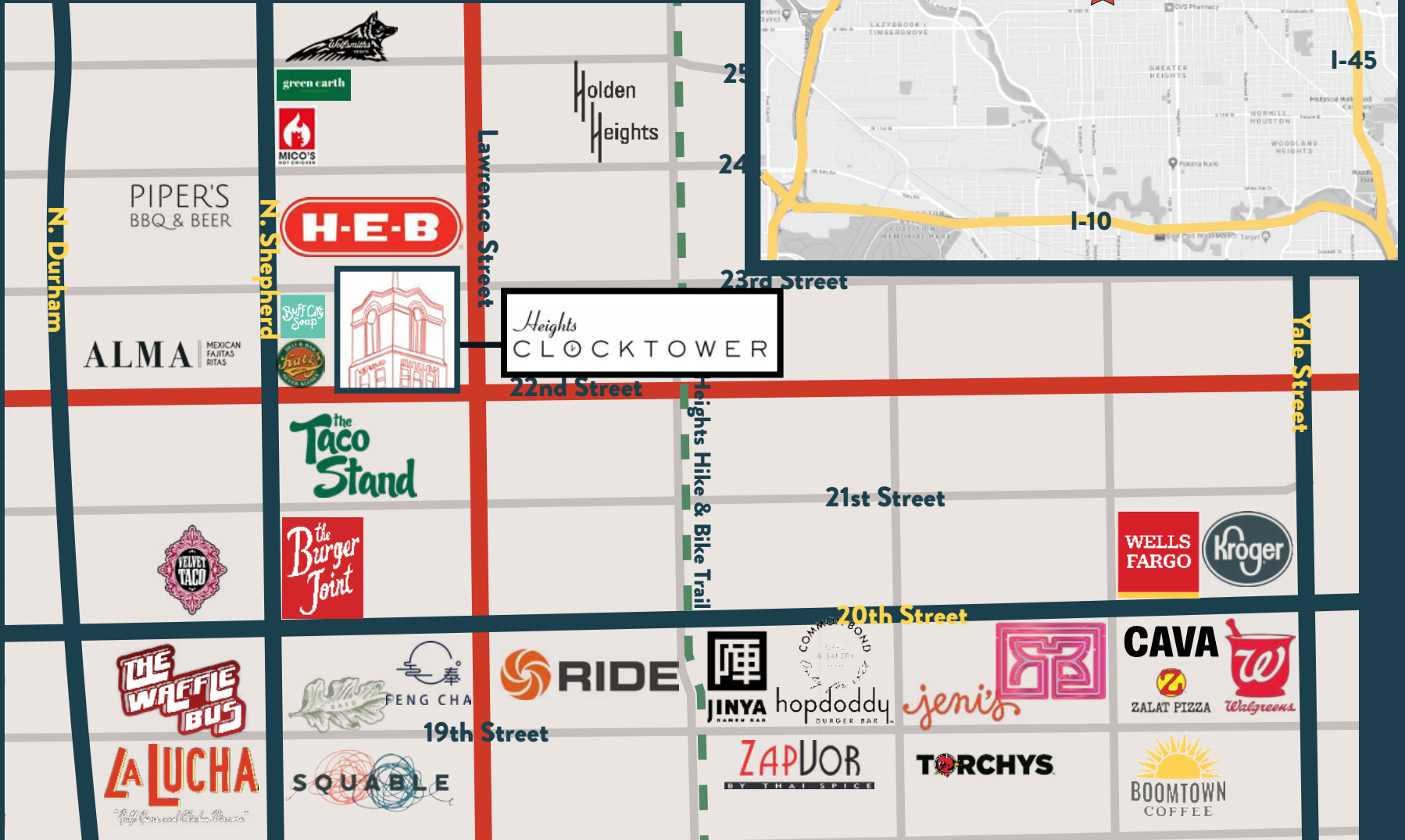
Additional Parking

Premises

dandelion
cafe



Map





Heights
CLOCKTOWER

Barton Kelly - 713.783.4444
Barton@radomcapital.com

Sidney Whaley - 713.783.4444
Sidney@radomcapital.com

