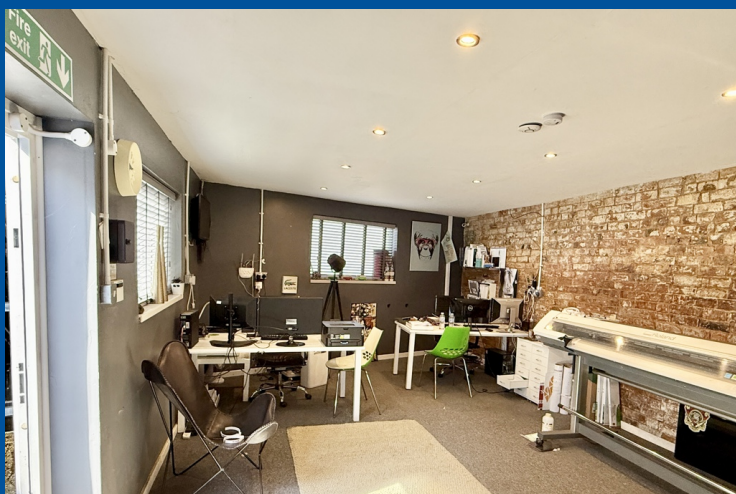


FOR SALE

687 Sq Ft



15 LESLIE ROAD, NORTHAMPTON, NORTHAMPTONSHIRE, NN2 6BD

SMALL WORKSHOP UNIT WITH OFFICE

- Car inspection pit
- Small enclosed yard
- Good security



15 LESLIE ROAD, NORTHAMPTON, NORTHAMPTONSHIRE, NN2 6BD

All ground floor accommodation comprising workshop with double doors, offices and an enclosed, gated yard. Good security and alarm. Additional on-street parking.
Workshop: 35.05 sq.m (377 sq.ft) Office: 28.8 sq.m (310 sq.ft)
TOTAL Net Area 63.85 sq.m (687 sq.ft)

Location

Northampton is a well-established commercial centre in the heart of Central England. The town is approximately 68 miles north of Central London, 55 miles to the south east of Birmingham and 14 miles to the north of Milton Keynes.

The population within a 20-minute drive time is 285,843 and the town's primary retail catchment extends to 467,000.

The property is located on the east side of Leslie Road only a short distance from the town centre where all the usual services and facilities are available. Easy access is afforded to Northampton's main road network and the M1 motorway at junction 15, 15a & 16

Accommodation

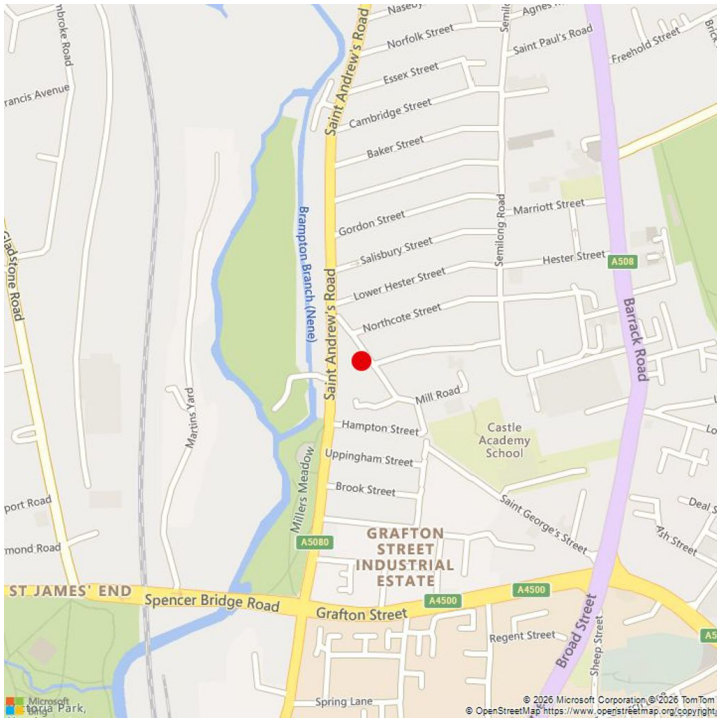
TOTAL	687	63.82
-------	-----	-------

Services

The property is served with an electricity and water supply. There is a vehicle inspection pit.

Legal Costs

Each party to bear their own legal costs in the transaction



Additional Information

Price

£98,000

EPC

C-rating

Viewing

Viewing strictly by prior appointment with:

Stephen Chown
src@chowncommercial.co.uk