

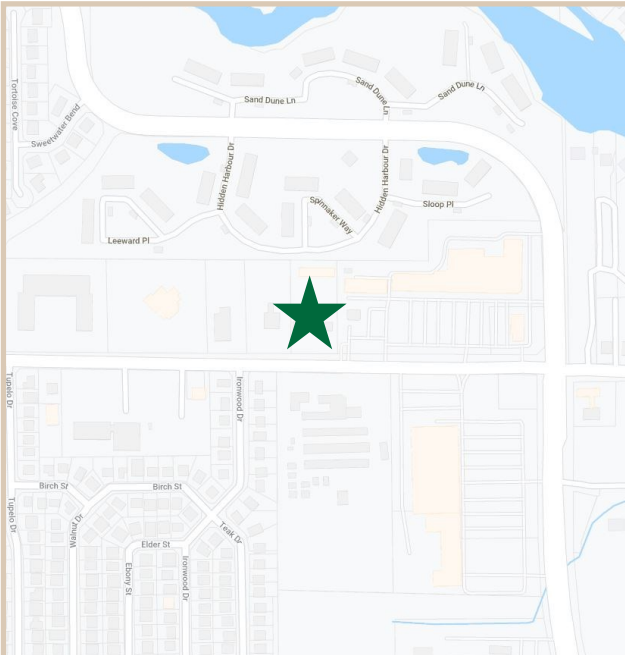
FOR LEASE

Sarno Professional Center

1360-1380 Sarno Road, Melbourne, Florida 32935

PROPERTY FACTS

Building Area:	19,470 Sq. Ft.
Complex Configuration:	14 Units in Three Buildings
Unit Size:	1,100-2,200 Sq. Ft.
Construction:	Concrete Walls & Concrete Roof
Utilities:	City Water/Septic
Zoning:	CIA Permitted Uses Include: Retail Office, Medical, Financial Institutions, and Personal Service
Parcel Size:	2 Acres
Year Built	1978



PROPERTY HIGHLIGHTS

Price	Great value for a newly renovated space.
Parking & Access	Easy access off of Sarno Road with direct access to parking in front of each building.
Location	Within two miles of Melbourne International Airport and one mile from U.S. One. Centrally located on the north side of the central business district.
Aesthetics	Extensive interior and exterior renovations. These renovations include new paint, logos, and carpeting.



CHARLES A. VON STEIN, INC.

Commercial Property Management,
Sales & Leasing Specialists since 1963
626 Old Dixie Highway SW
Vero Beach, FL 32962
www.vscrc.com

CONTACT INFO:

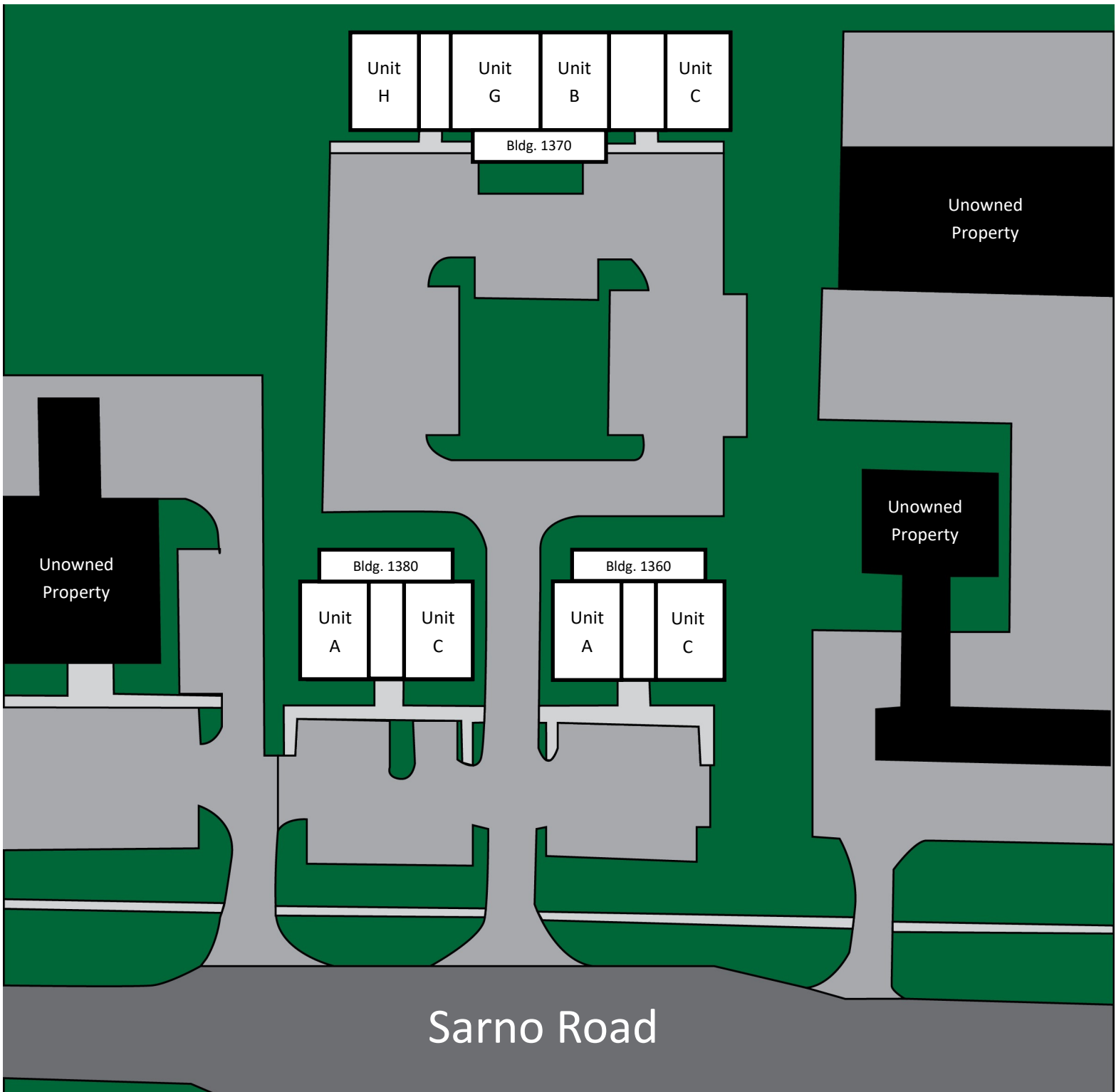
Brevard County: 321.725.1961
Indian River County: 772.778.4885
Fax: 772.778.4908
Leasing: leasing@vscre.com

SITE PLAN

Site Plan:
First Floor

Sarno Professional Center

1360-1380 Sarno Road, Melbourne, Florida 32935



CHARLES A. VON STEIN, INC.
*Commercial Property Management,
Sales & Leasing Specialists since 1963*
626 Old Dixie Highway SW
Vero Beach, FL 32962
www.vscrc.com

CONTACT INFO:

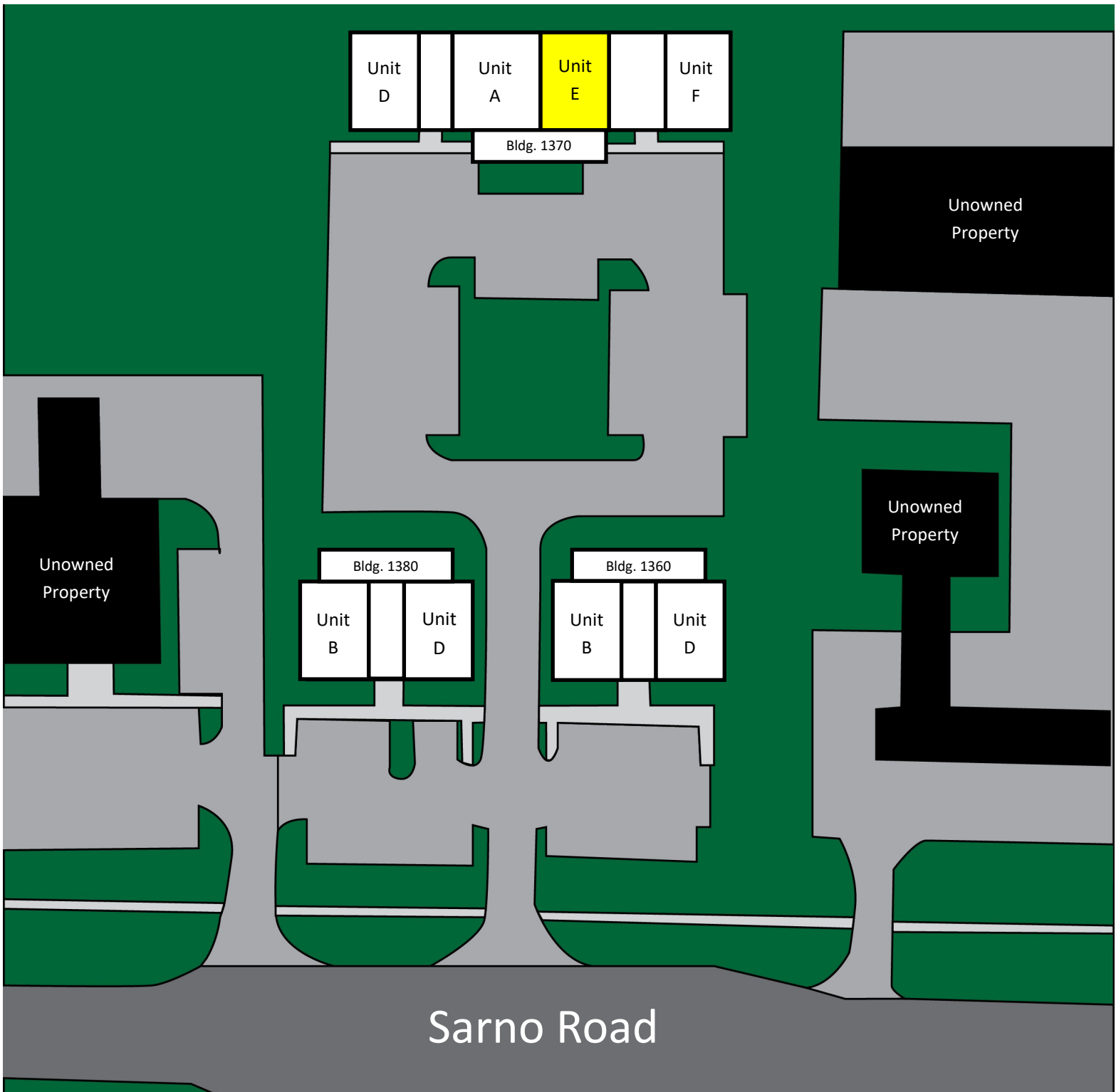
Brevard County: 321.725.1961
Indian River County: 772.778.4885
Fax: 772.778.4908
Leasing: leasing@vscrc.com

SITE PLAN

Site Plan:
Second Floor

Sarno Professional Center

1360-1380 Sarno Road, Melbourne, Florida 32935



CHARLES A. VON STEIN, INC.
Commercial Property Management,
Sales & Leasing Specialists since 1963
626 Old Dixie Highway SW
Vero Beach, FL 32962
www.vscrc.com

CONTACT INFO:

Brevard County: 321.725.1961
Indian River County: 772.778.4885
Fax: 772.778.4908
Leasing: leasing@vscre.com

COMING AVAILABLE

Second Floor

Sarno Professional Center

1360-1380 Sarno Road, Melbourne, Florida 32935

UNIT	SIZE	RATE	MONTHLY RATE	UTILITIES INCLUDED				DATE AVAILABLE
				WATER	ELECTRIC	TRASH	CABLE	
1370 E	1,100 SF	\$12.00 / YR	\$1,100.00	Yes	No	Yes	No	September 1, 2026



CHARLES A. VON STEIN, INC.

Commercial Property Management,
Sales & Leasing Specialists since 1963
626 Old Dixie Highway SW
Vero Beach, FL 32962
www.vscre.com

CONTACT INFO:

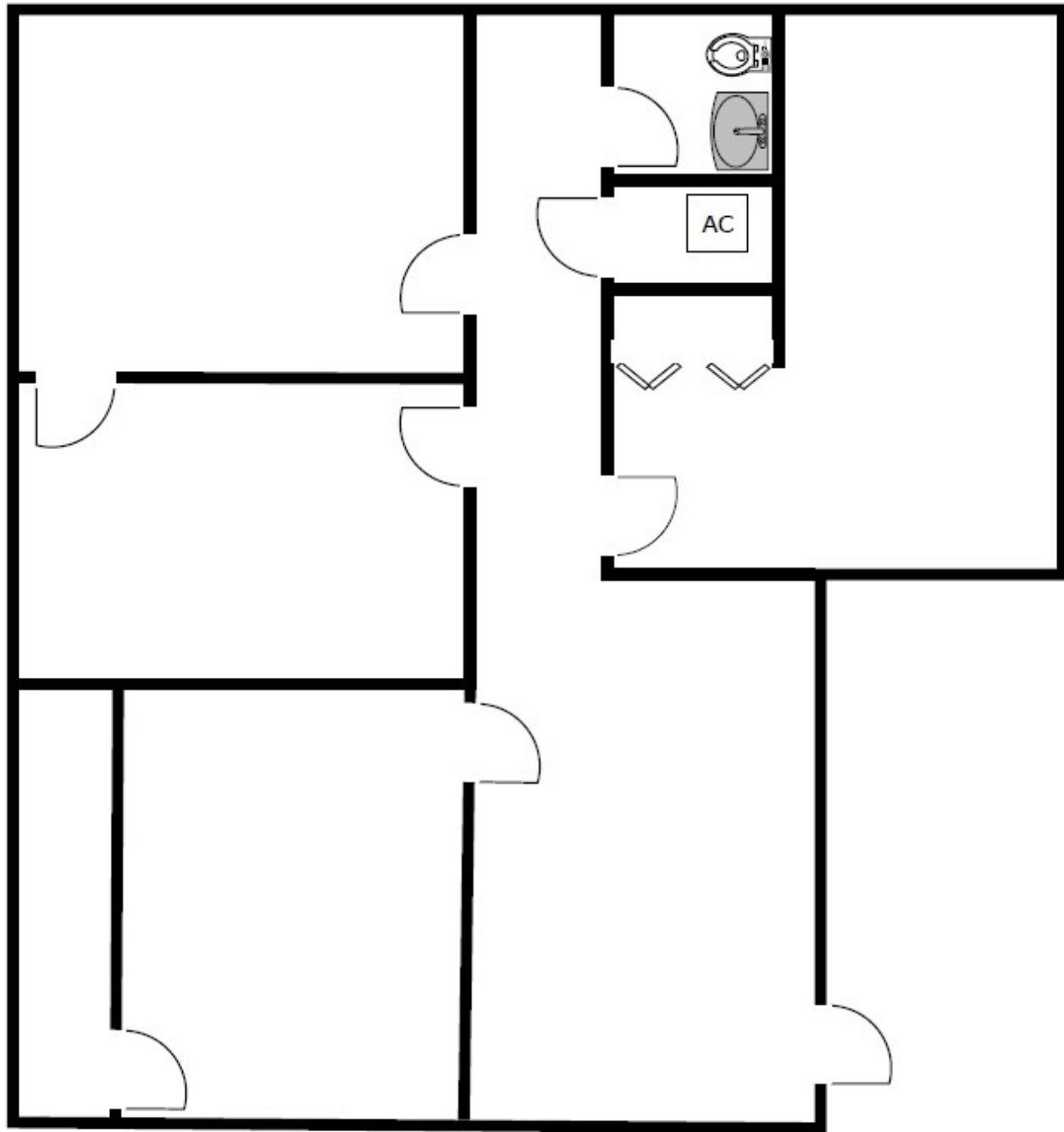
Brevard County: 321.725.1961
Indian River County: 772.778.4885
Fax: 772.778.4908
Leasing: leasing@vscre.com

FLOOR PLAN

Unit 1370 E

Sarno Professional Center

1360-1380 Sarno Road, Melbourne, Florida 32935



1,100 SF



CHARLES A. VON STEIN, INC.

Commercial Property Management,
Sales & Leasing Specialists since 1963
626 Old Dixie Highway SW
Vero Beach, FL 32962
www.vscre.com

CONTACT INFO:

Brevard County: 321.725.1961
Indian River County: 772.778.4885
Fax: 772.778.4908
Leasing: leasing@vscre.com

AERIAL

Sarno Professional Center

1360-1380 Sarno Road, Melbourne, Florida 32935



CHARLES A. VON STEIN, INC.

Commercial Property Management,
Sales & Leasing Specialists since 1963
626 Old Dixie Highway SW
Vero Beach, FL 32962
www.vscore.com

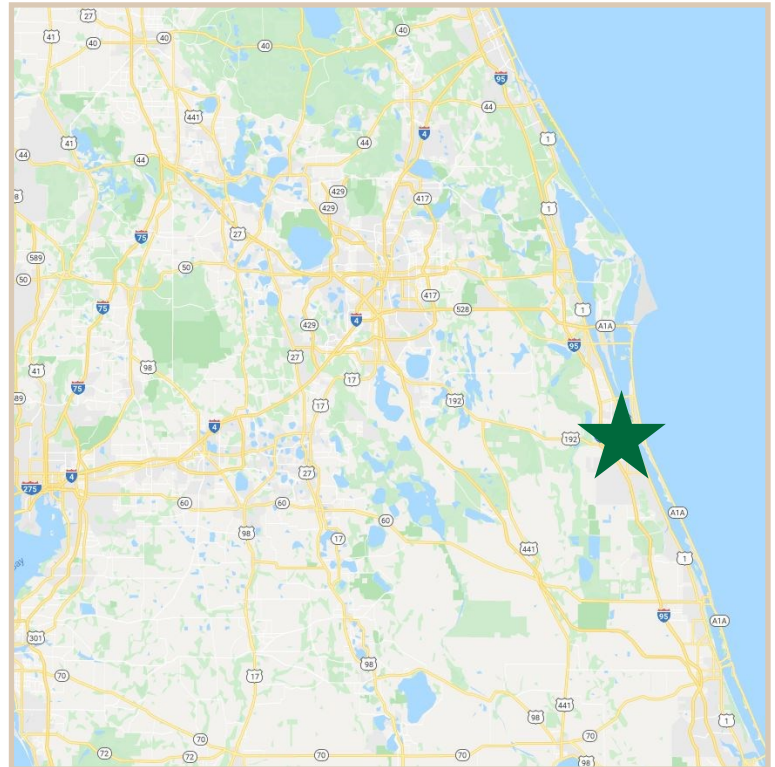
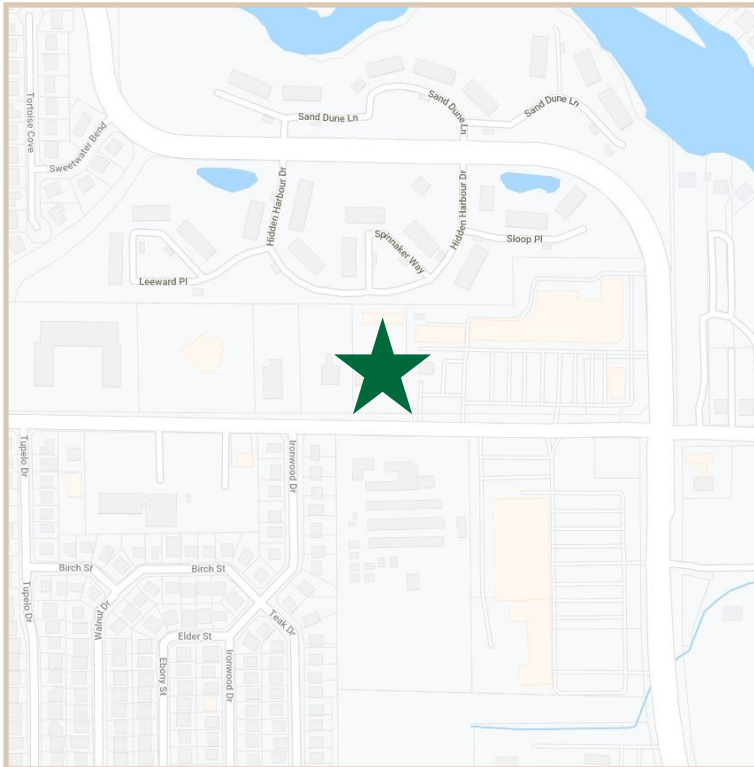
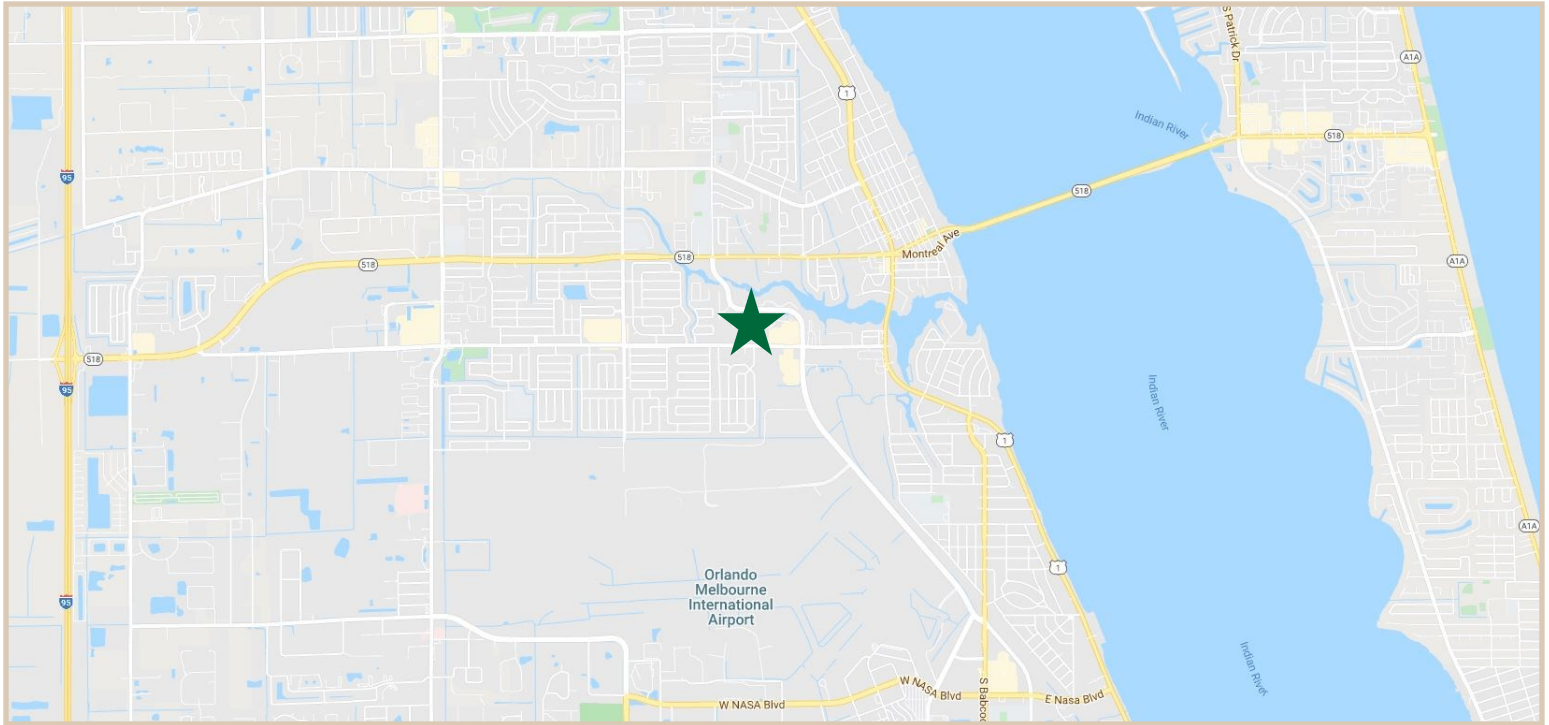
CONTACT INFO:

Brevard County:	321.725.1961
Indian River County:	772.778.4885
Fax:	772.778.4908
Leasing:	leasing@vscre.com

LOCATION MAPS

Sarno Professional Center

1360-1380 Sarno Road, Melbourne, Florida 32935



CHARLES A. VON STEIN, INC.
*Commercial Property Management,
Sales & Leasing Specialists since 1963*
626 Old Dixie Highway SW
Vero Beach, FL 32962
www.vscrc.com

CONTACT INFO:

Brevard County: 321.725.1961
Indian River County: 772.778.4885
Fax: 772.778.4908
Leasing: leasing@vscre.com

ADDITIONAL PHOTOS

Sarno Professional Center

1360-1380 Sarno Road, Melbourne, Florida 32935



CHARLES A. VON STEIN, INC.
*Commercial Property Management,
Sales & Leasing Specialists since 1963*
626 Old Dixie Highway SW
Vero Beach, FL 32962
www.vscrc.com

CONTACT INFO:

Brevard County: 321.725.1961
Indian River County: 772.778.4885
Fax: 772.778.4908
Leasing: leasing@vscrc.com