

FOR LEASE
±10,200 SF OFFICE SPACE

10500 S. HARLAN ROAD

FRENCH CAMP, CA 95231



FOR MORE INFORMATION, PLEASE CONTACT:

STEVE DUNN
Senior Director
+1 209 992 0953
steve.dunn@cushwake.com

TYSON VALLENARI
Executive Managing Director
+1 510 919 2328
tyson.vallenari@cushwake.com

3255 West March Lane
Stockton, California 95219
cushmanwakefield.com



BUILDING HIGHLIGHTS

±10,200 SF Office Space Available for Lease

Two Floors: ±4,300 SF 1st Floor | ±5,900 SF 2nd Floor

Office furniture, cubicles and other items may be available for plug and play

Great I-5 Freeway visibility & access more than 100,000 vehicles per day

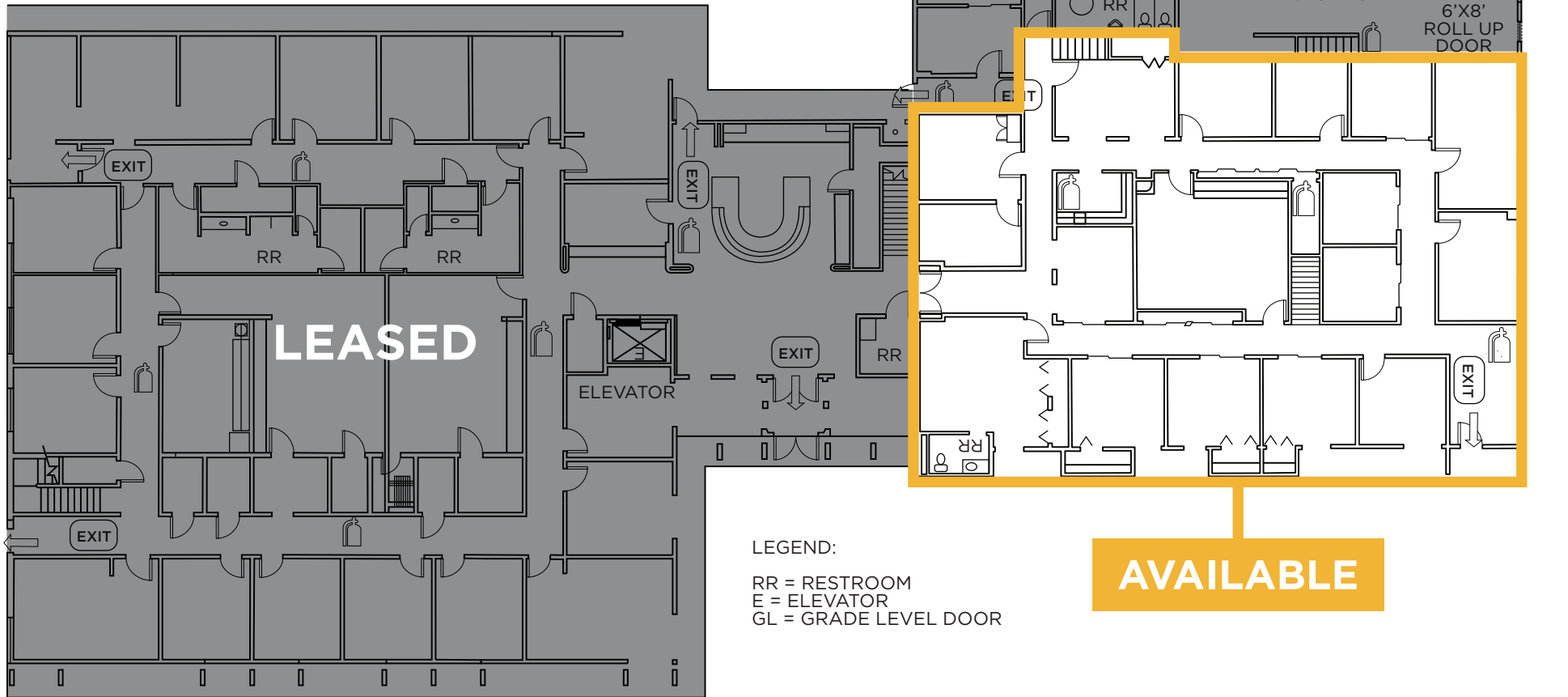
Multiple breakrooms, restrooms, private offices, conference rooms and training rooms on each floor and throughout the building



FLOOR PLAN

1ST FLOOR

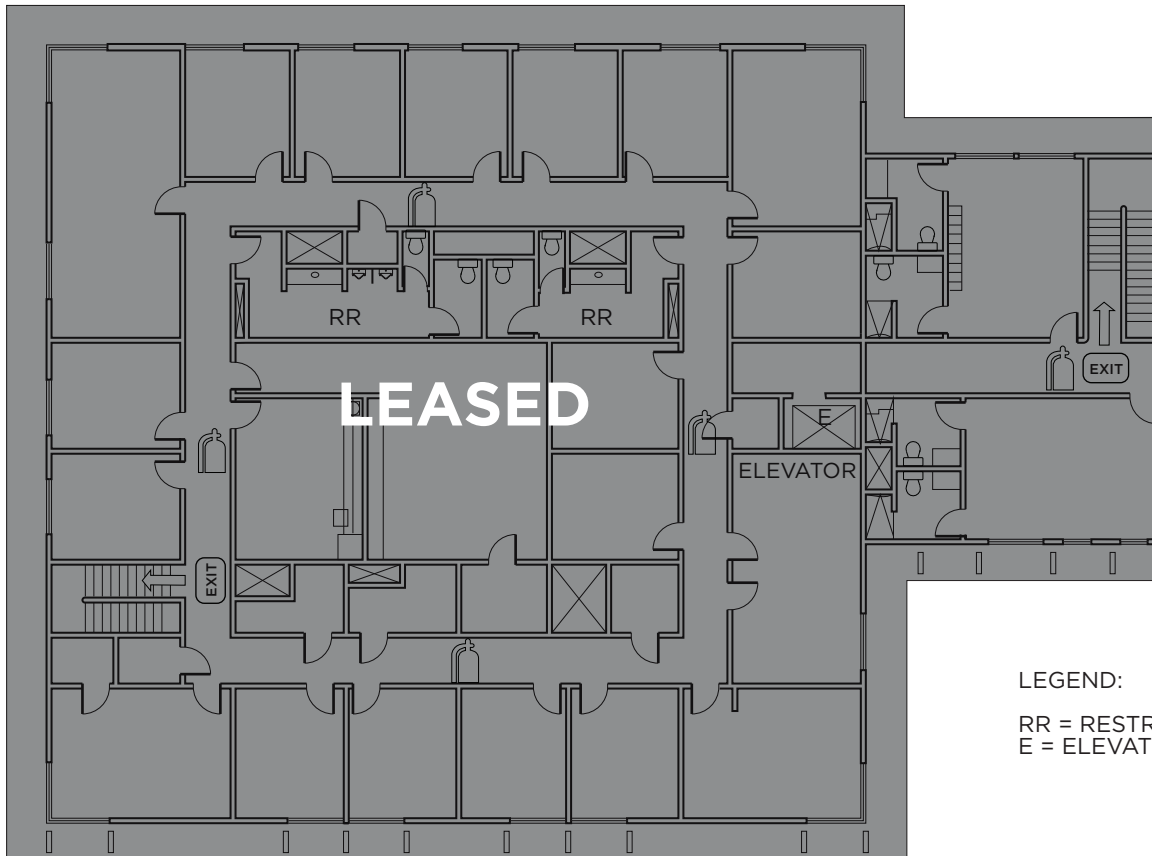
±4,300 SF OFFICE
AVAILABLE FOR LEASE



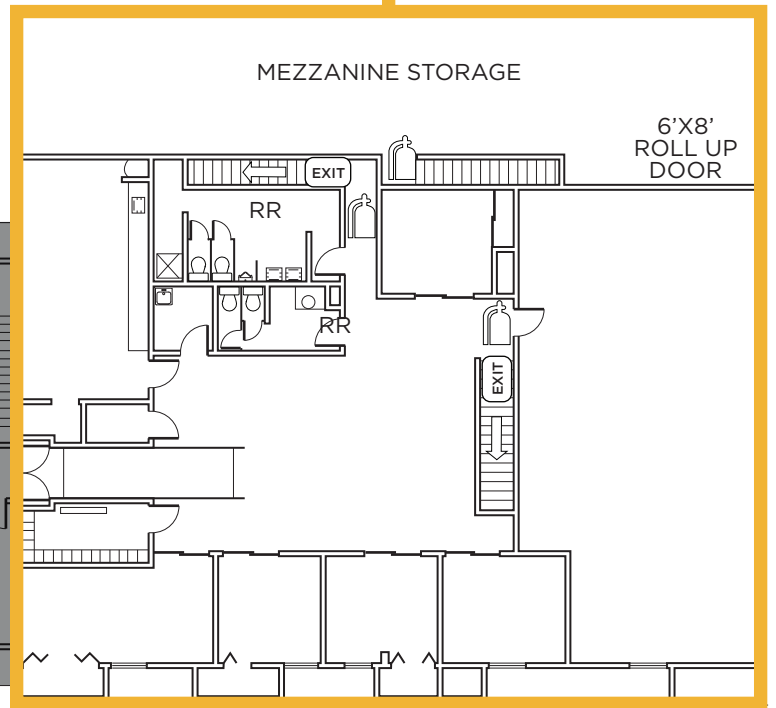
FLOOR PLAN

2ND FLOOR

±5,900 SF OFFICE
AVAILABLE FOR LEASE



AVAILABLE

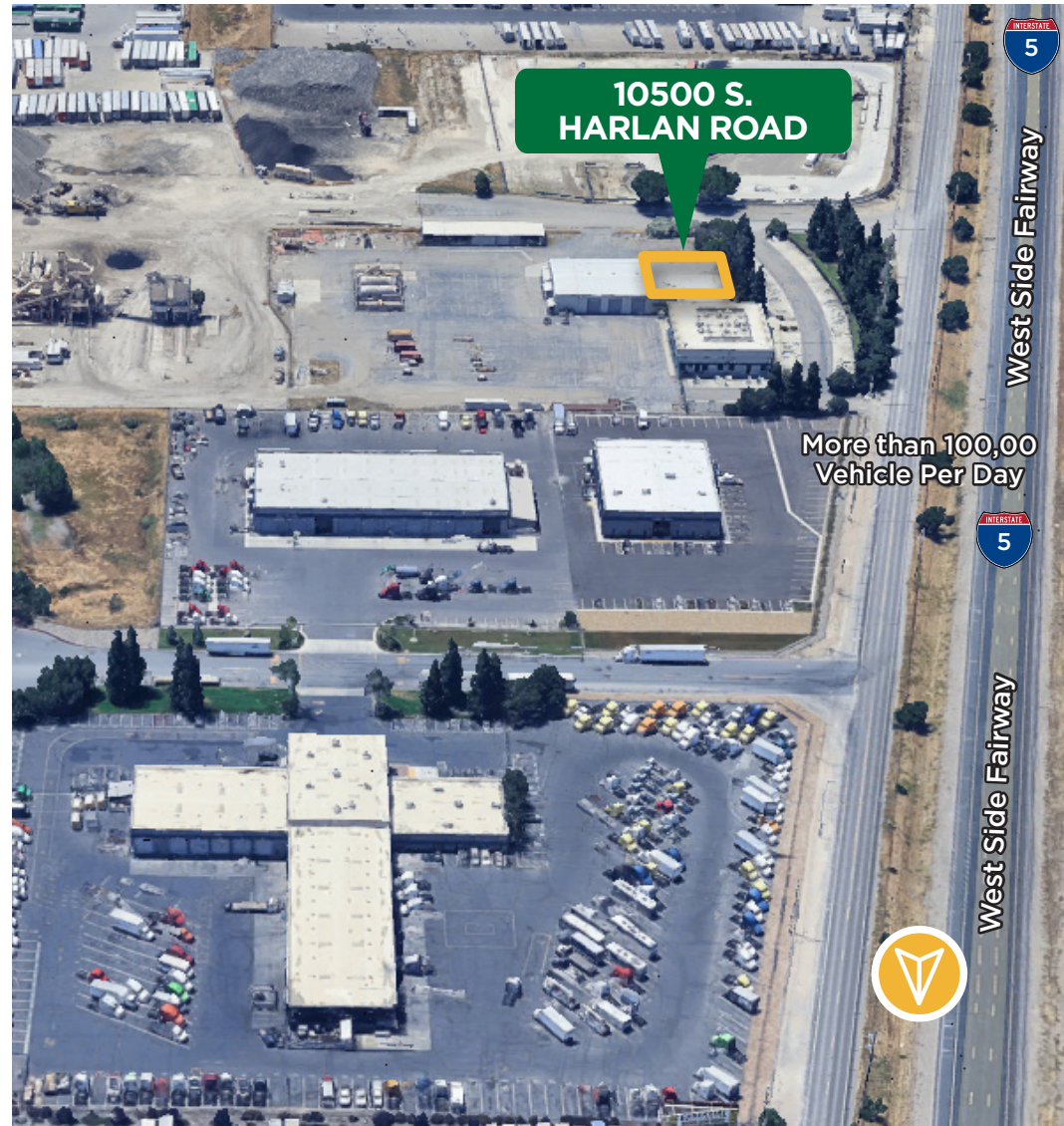


LEGEND:
RR = RESTROOM
E = ELEVATOR

I-5 FREEWAY

AERIAL MAP

	Port of Stockton	Sacramento	Port of Oakland	UPRR Lathrop Intermodal Yard
Miles	9 Miles	55 Miles	65 Miles	2 Miles



AMENITY MAP



FOR MORE INFORMATION, PLEASE CONTACT:

STEVE DUNN
Senior Director
+1 209 992 0953
steve.dunn@cushwake.com

TYSON VALLENARI
Executive Managing Director
+1 510 919 2328
tyson.vallenari@cushwake.com

3255 West March Lane
Stockton, California 95219
cushmanwakefield.com

