



**333 NEWARK AVE
JERSEY CITY**

**FOR LEASE
EXCLUSIVE**

Table of Contents

3 Offering Description

4 Floor Plan

5 Images

Confidentiality & Disclaimer

The information contained following Marketing Brochure is proprietary and strictly confidential. It is intended to be reviewed only by the party receiving it from Grid Real Estate, LLC and should not be made available to any other person or entity without the written consent of Grid Real Estate, LLC. This Marketing Brochure has been prepared to provide summary, unverified information to prospective purchasers, and to establish only a preliminary level of interest in the subject property.

The information contained herein is not a substitute for a thorough due diligence investigation. Grid Real Estate, has not made any investigation, and makes no warranty or representation, with respect to the income or expenses for the subject property, the future projected financial performance of the property, the size and square footage of the property and improvements, the presence or absence of contaminating substances, PCB's or asbestos, the compliance with State and Federal regulations, the physical condition of the improvements thereon, or the financial condition or business prospects of any tenant or any tenant's plans or intentions to continue its occupancy of the subject property.

The information contained in this Marketing Brochure has been obtained from sources we believe to be reliable; however, Grid Real Estate, LLC has not verified, and will not verify, any of the information contained herein, nor has Grid Real Estate, LLC conducted any investigation regarding these matters and makes no warranty or representation whatsoever regarding the accuracy or completeness of the information provided. All potential buyers must take appropriate measures to verify all of the information set forth herein. © 2026 Grid Real Estate, LLC. All rights reserved.

THIS IS A BROKER PRICE OPINION OR COMPARATIVE MARKET ANALYSIS OF VALUE AND SHOULD NOT BE CONSIDERED AN APPRAISAL. This information has been secured from sources we believe to be reliable, but we make no representations or warranties, express or implied, as to the accuracy of the information. References to square footage or age are approximate. Buyer must verify the information and bears all risk for any inaccuracies.

333 Newark Ave

Available Space 1,700SF - 2,455 SF

333 Newark Avenue offers a fully built-out medical and professional office suite on the second floor in the heart of Historic Downtown Jersey City, just 0.7 miles from the Grove Street PATH station. The space ranges from 1,700 to 2,446 square feet and is available Q3 2026 on a NNN basis. The suite is turnkey and designed for high-end professional use, featuring 12-foot finished ceilings, glass offices, a conference room, private bathrooms, a kitchen area, and central HVAC. A private elevator provides direct access to the floor, with a prominent corner entrance at Newark Ave and 4th Street offering strong visibility.

Zoned Neighborhood Commercial, the building accommodates a wide range of uses including medical offices, financial institutions, educational facilities, and health clubs – making it an ideal fit for an established practice or professional firm looking for a trophy address with immediate occupancy. For the right operator, the building is also available for purchase. One can stack SBA 504 and conventional financing structure, requiring as little as 10% down. Additional SBA financing for medical buildout and equipment is available within the same loan program. The math is compelling for the capitalized owner user. Why pay rent when you can own and build equity.

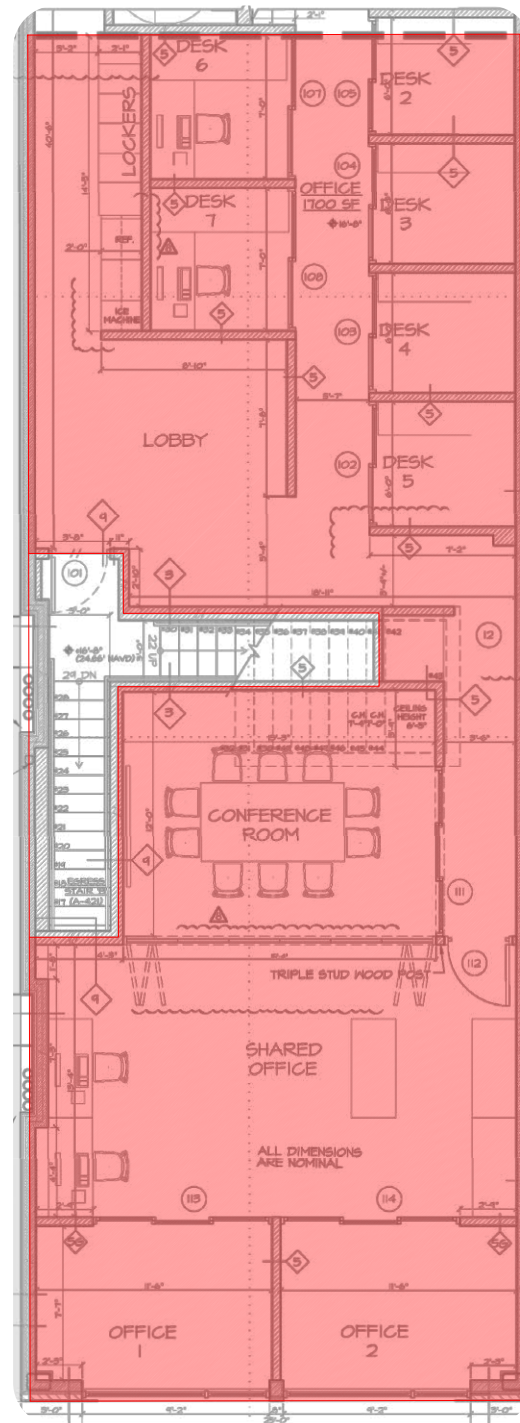
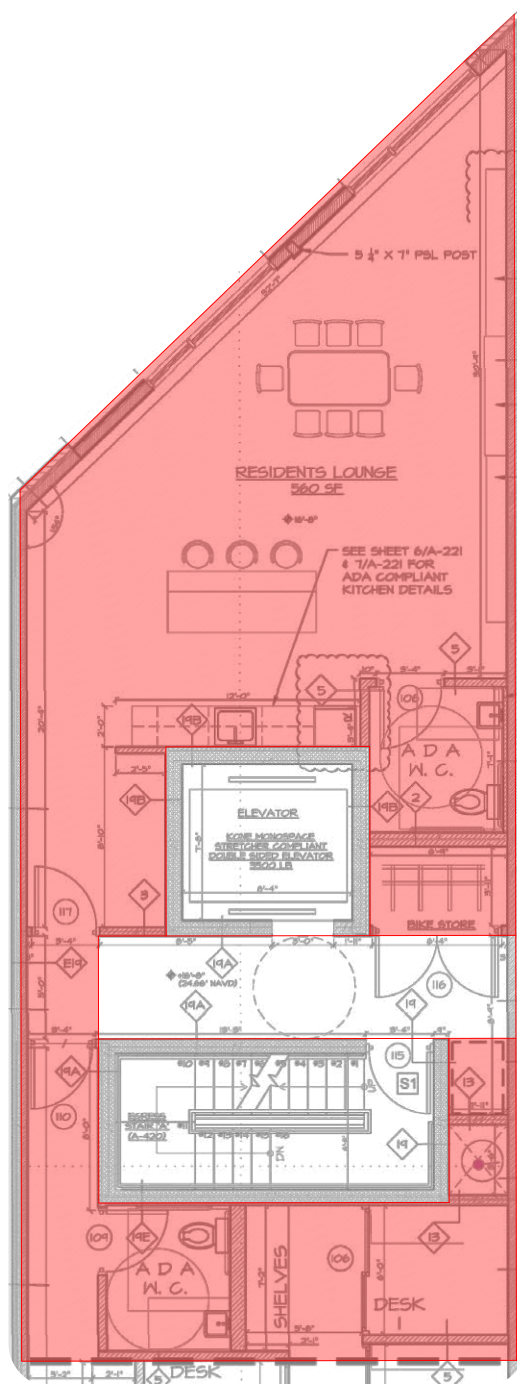


Floor Plans

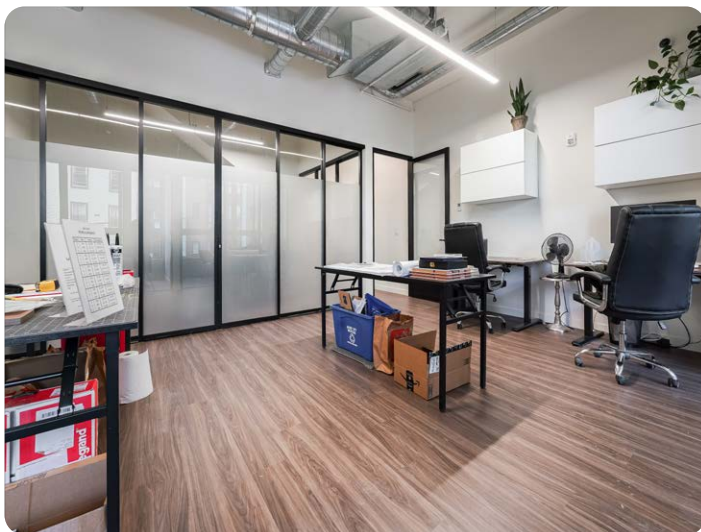
Available
Q3 2026

Lease Type
NNN

Price
Upon Request



3 Interior Images





Contact

Exclusive Brokers

Grid Real Estate

201 Marin Blvd #106
Jersey City, NJ 07302
<http://gridcre.com>

Gregory D. Edgell

Real Estate Broker
973.610.5145
greg@gridcre.com

Chris Vitiello

Real Estate Agent
551.204.1361
chris@gridcre.com