

The drawings and specifications as instruments of service are and shall remain the property of the Designer. They are not to be used on other projects or extensions to this project except by agreement in writing and with appropriate compensation to the Designer. Contractor is responsible for confirming and verifying dimensions at job site; the Designer will not be responsible for construction means, methods, techniques, sequences or procedures; or for safety precautions and programs in connection with the project.

CONSULTANTS:

CIVIL:

STRUCTURAL:

MEP:

KMK FLEX
 26717 WESTHEIMER
 PARKWAY
 KATY, TX 77494

ISSUED FOR:

REVISIONS:



DIAZ GROUP LLC

SHEET TITLE:

TYPICAL UNIT

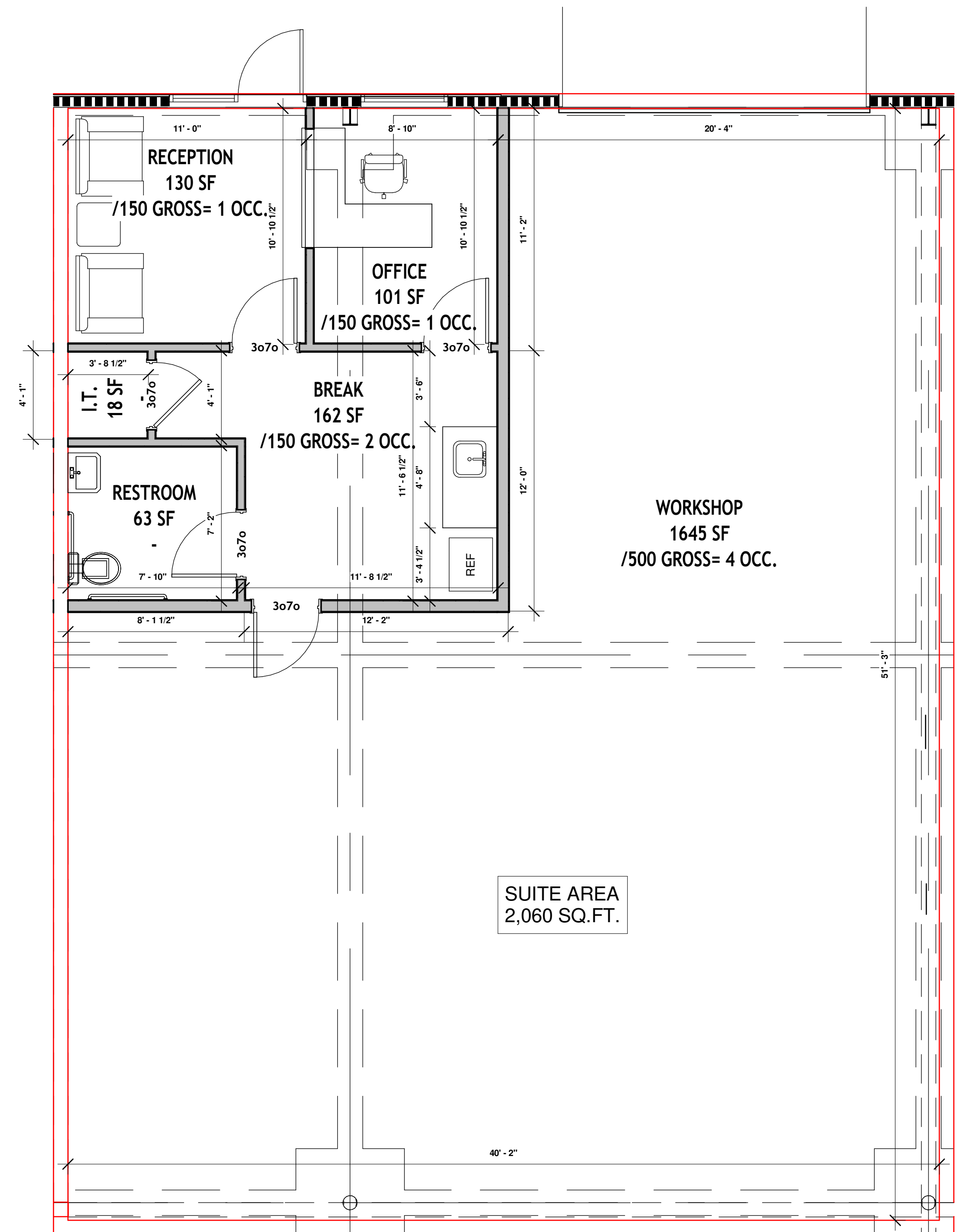
SCALE: 1/4" = 1'-0"

DATE: 4/7/2026 3:18:42 PM

JOB No.: Project Number

SHEET No.:

A107



OFFICE			
Name	Area	Occupancy	Comments
BREAK	162 SF	/150 GROSS= 2 OCC.	SUITE 1509
RECEPTION	130 SF	/150 GROSS= 1 OCC.	SUITE 1509
OFFICE	101 SF	/150 GROSS= 1 OCC.	SUITE 1509
RESTROOM	63 SF	-	SUITE 1509
I.T.	18 SF	-	SUITE 1509
	474 SF		

IFC: 2021
 Type: II-B
 Group: F1
 OCCUPANCY OFFICE / WORKSHOP
 BUILD-OUT 474 SQ.FT.
 LEASE [REDACTED] SQ.FT.
 O/L: 8 OCC
 FA: YES
 FS: Yes
 D/D: NO
 Hood: NO

1 SUITE
 1/4" = 1'-0"