



## 3029 S. Sherwood Forest Blvd

Baton Rouge, LA 70816

### Property Features

- 36,000 SF
- Ideal for Owner Occupant
- 138 Parking Spaces
- Great Location on S. Sherwood Forest Blvd
- Quick Access to I-12

### Asking Price:

**\$3,200,000**

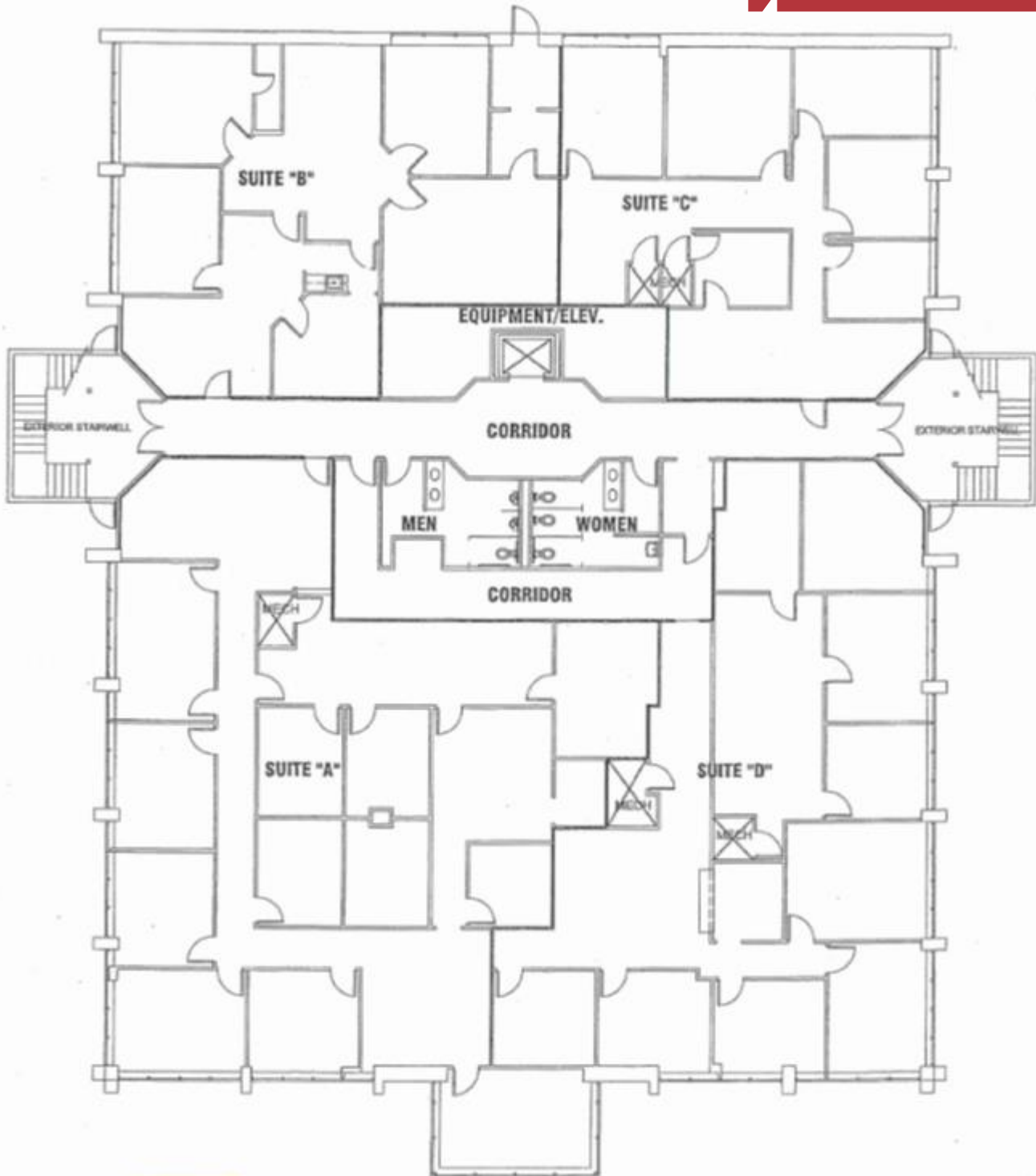
**Ty Gose, CCIM**

Ty@latterblum.com  
225.295.0800

**Erin Caballero**

Erinc@latterblum.com  
225.241.6530

## 1st Floor

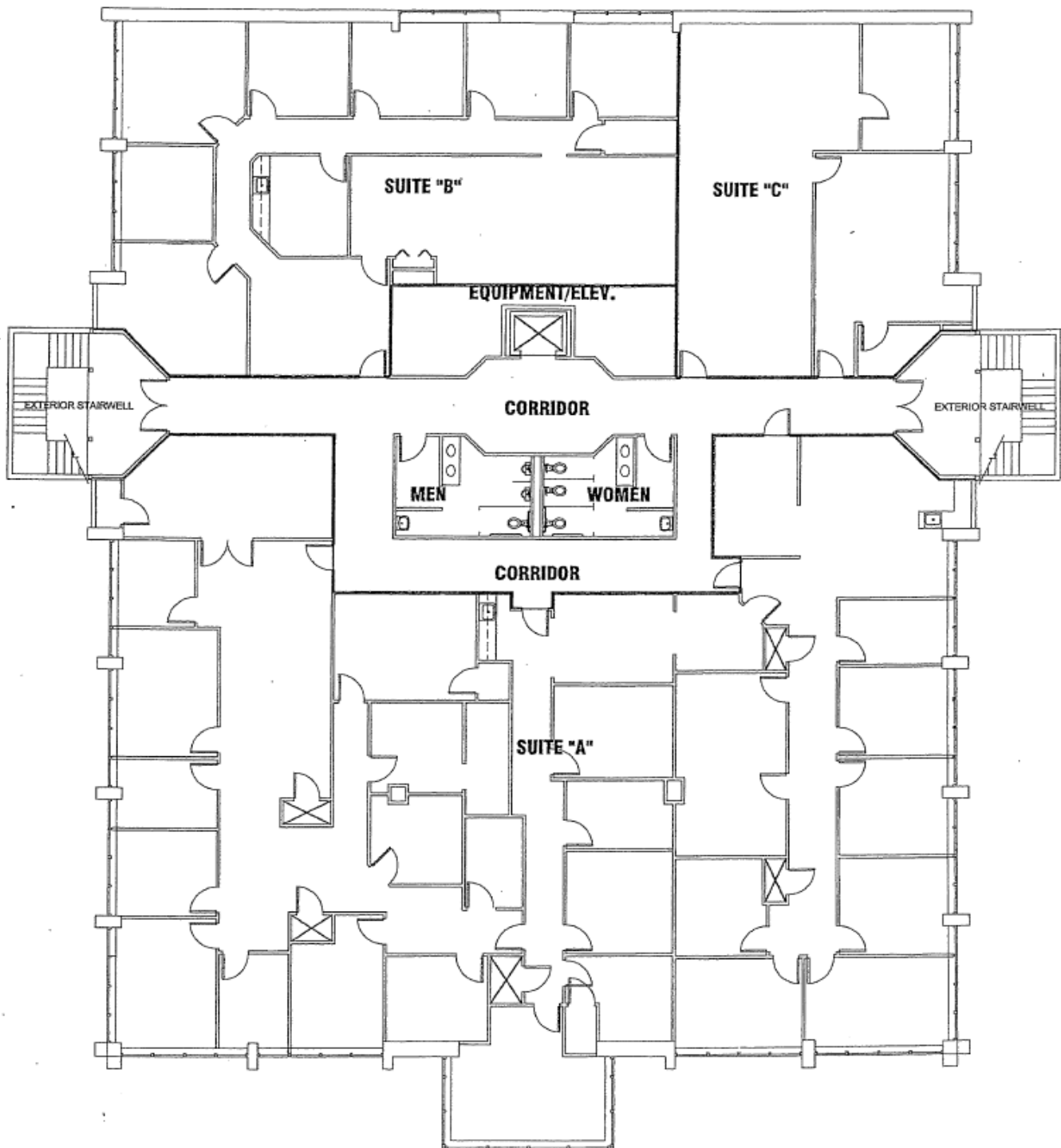


**Ty Gose, CCIM**

Ty@latterblum.com  
225.295.0800

**Erin Caballero**

Erinc@latterblum.com  
225.241.6530

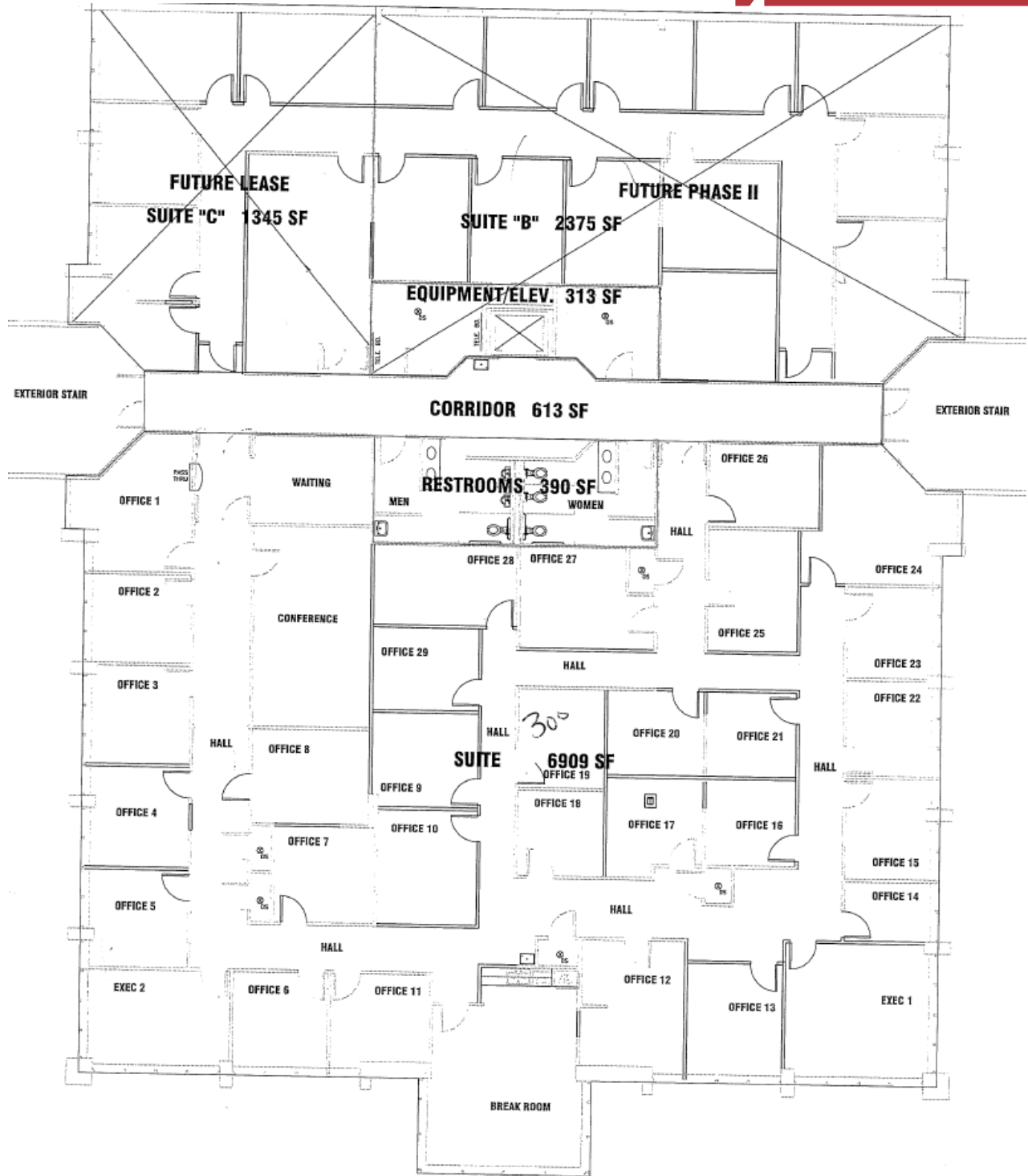


**Ty Gose, CCIM**

Ty@latterblum.com  
225.295.0800

**Erin Caballero**

Erinc@latterblum.com  
225.241.6530



**Ty Gose, CCIM**

Ty@latterblum.com  
225.295.0800

**Erin Caballero**

Erinc@latterblum.com  
225.241.6530



**Ty Gose, CCIM**

Ty@latterblum.com  
225.295.0800

**Erin Caballero**

Erinc@latterblum.com  
225.241.6530