

# DENTAL/ORTHODONTICS/PROFESSIONAL OFFICE FOR SALE OR LEASE

*4816 Greenwood Rd, Louisville, KY 40258*



## ***Freestanding 2,131 SF dental/orthodontic office offers a professional environment in a high-traffic South Louisville corridor***

- *Prime South End location on busy Greenwood Road, near Dixie Highway with signage*
  - *Reception and waiting area with adjacent administrative and work space*
  - *Two treatment rooms with five operatories plus lab and sterilization area*
    - *Breakroom and one restroom on main level*
  - *Second floor with three private offices, full bath with shower, and generous storage*
- *Additional lot included, providing expansion potential, new construction, or extra parking*
  - *Total site area: approximately 0.47 acres on a corner*
  - *FF&E (equipment and furnishings) available for purchase separately*
- *This is an ideal opportunity for a dentist, orthodontist, or medical/professional user seeking a move-in-ready office with room to grow in an established commercial corridor.*

***Rhonda Karageorge, CCIM***  
*(502) 744-9175*  
*(502) 379-6003*  
*rk@ccre.biz*

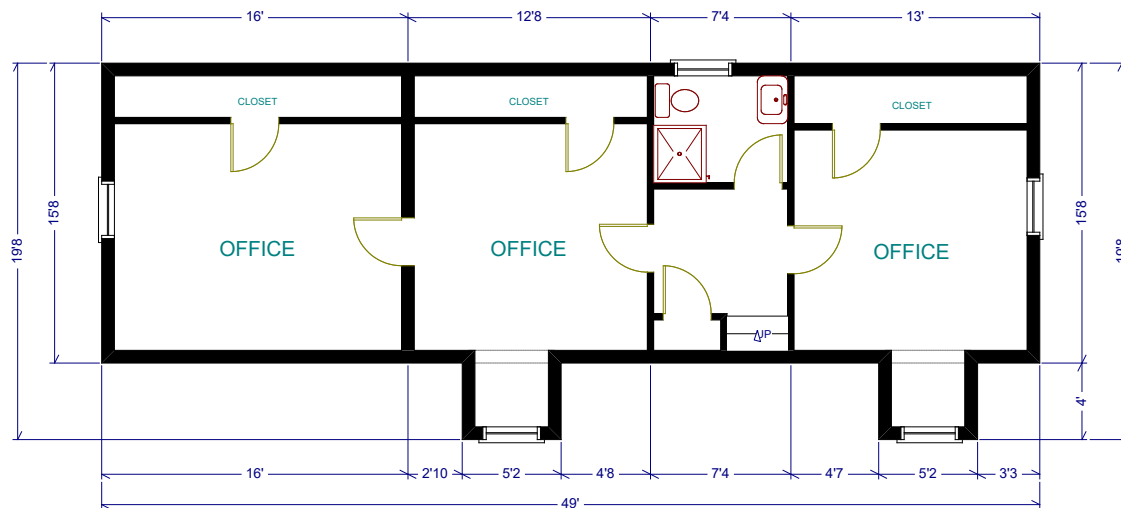
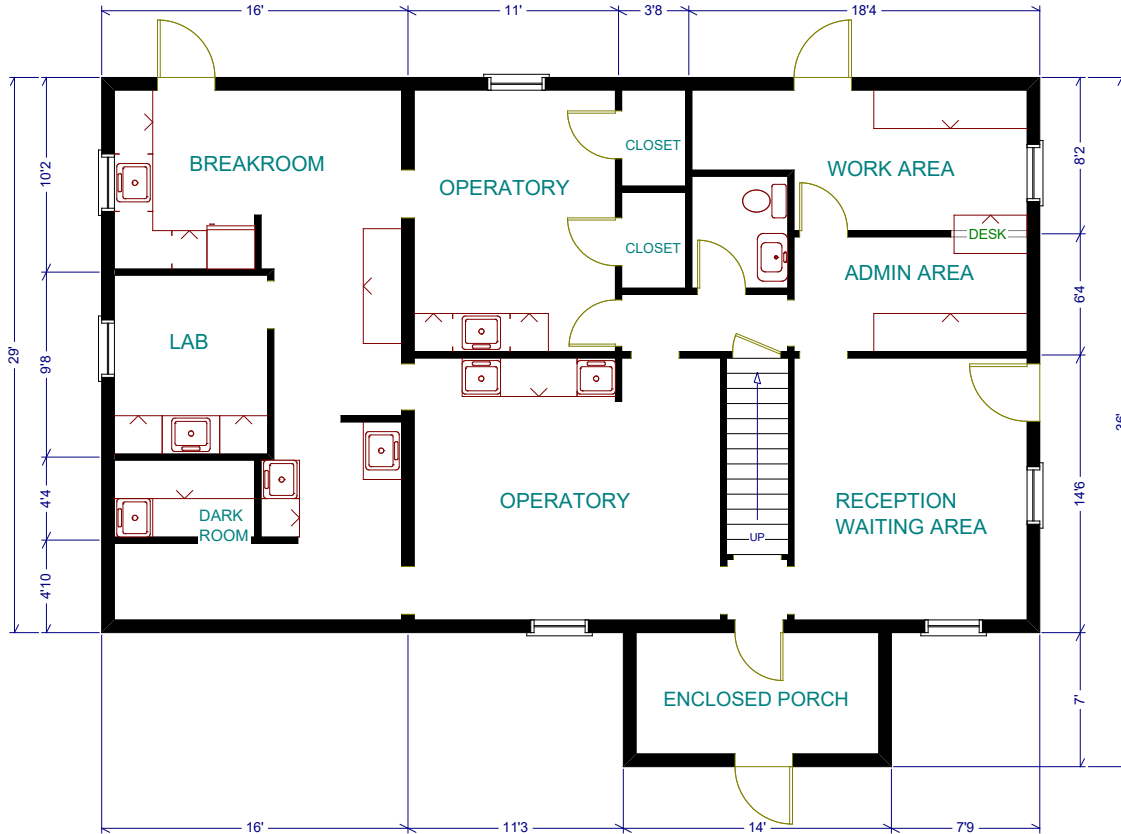
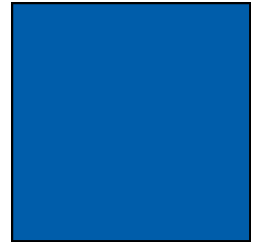
**COMMONWEALTH  
COMMERCIAL  
REAL ESTATE**

Commonwealth Commercial Real Estate, 10444 Bluegrass Parkway, Louisville, Kentucky 40299  
Phone: (502) 379-6000 | [www.ccre.biz](http://www.ccre.biz) | Licensed in Kentucky and Indiana

We obtained this information from sources we believe are reliable, however, we make no guarantee, warranty or representation about it. It is provided subject to the possibility of errors, omissions, change of price, rental or other conditions, prior sale, lease or financing, or withdrawal without notice. Images or plans presented are not architectural or "as built" drawings and are presented to give an approximation of space/dimensions and, therefore, no warranty or representation, express or implied, is made to their accuracy. It is your responsibility to independently verify that the property is acceptable to you and for your intended use.

# DENTAL/ORTHODONTICS/PROFESSIONAL OFFICE FOR SALE OR LEASE

4816 Greenwood Rd, Louisville, KY 40258



Commonwealth Commercial Real Estate, 10444 Bluegrass Parkway, Louisville, Kentucky 40299  
Phone: (502) 379-6000 | [www.ccre.biz](http://www.ccre.biz) | Licensed in Kentucky and Indiana

We obtained this information from sources we believe are reliable, however, we make no guarantee, warranty or representation about it. It is provided subject to the possibility of errors, omissions, change of price, rental or other conditions, prior sale, lease or financing, or withdrawal without notice. Images or plans presented are not architectural or "as built" drawings and are presented to give an approximation of space/dimensions and, therefore, no warranty or representation, express or implied, is made to their accuracy. It is your responsibility to independently verify that the property is acceptable to you and for your intended use.