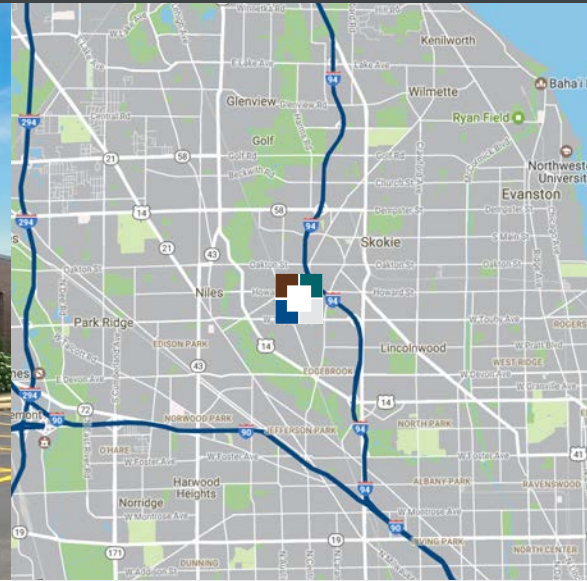




AVAILABLE
3,704 SF

5657 Howard Street - Niles, IL



ABOUT THIS PROPERTY

- > Location: Howard Plaza III
- > Space Available: 3,704 SF
- > Office: 714 SF (20%)
- > Total Building Size: 92,986 SF
- > Construction: Masonry/Steel
- > Ceiling Height: 14' Clear
- > Loading: Four common docks with levelers & DID
- > Electric Capacity: 200 amps
- > Sprinklers: Wet System
- > Real Estate Taxes: 2026 Estimated \$3.12 PSF
- > CAM: 2026 Estimated \$1.17 PSF
- > Rental Rate: \$9.00/SF Net
- > Public transportation on Howard Street
- > Gas & electric utilities are separately metered
- > ¼ mile west of Eden's Expressway (I-94)
- > Institutionally Owned and Professionally Managed
- > Private drive in door (12' x 12')
- > Available Immediately

CONTACT US

BRENDAN GREEN
847 698 8227
brendan.green@colliers.com

JEFF HARKENSEE
847 698 8216
jeff.harkensee@colliers.com

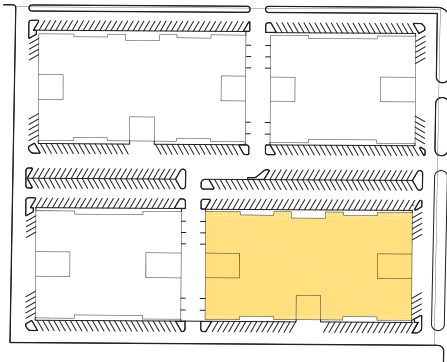
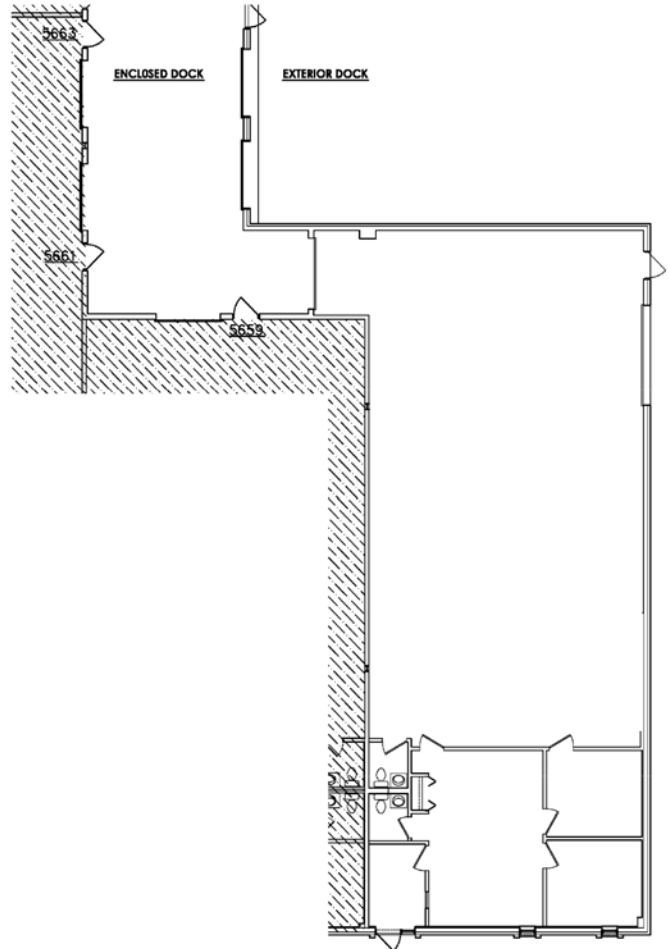
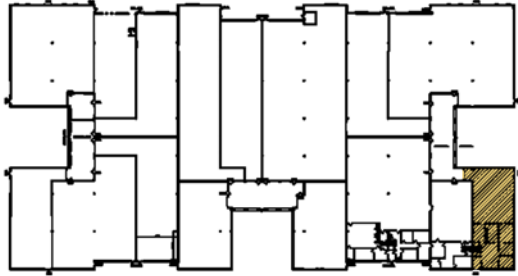
LINDA MCDONAGH
847 967 9312
linda.mcdonagh@colliers.com



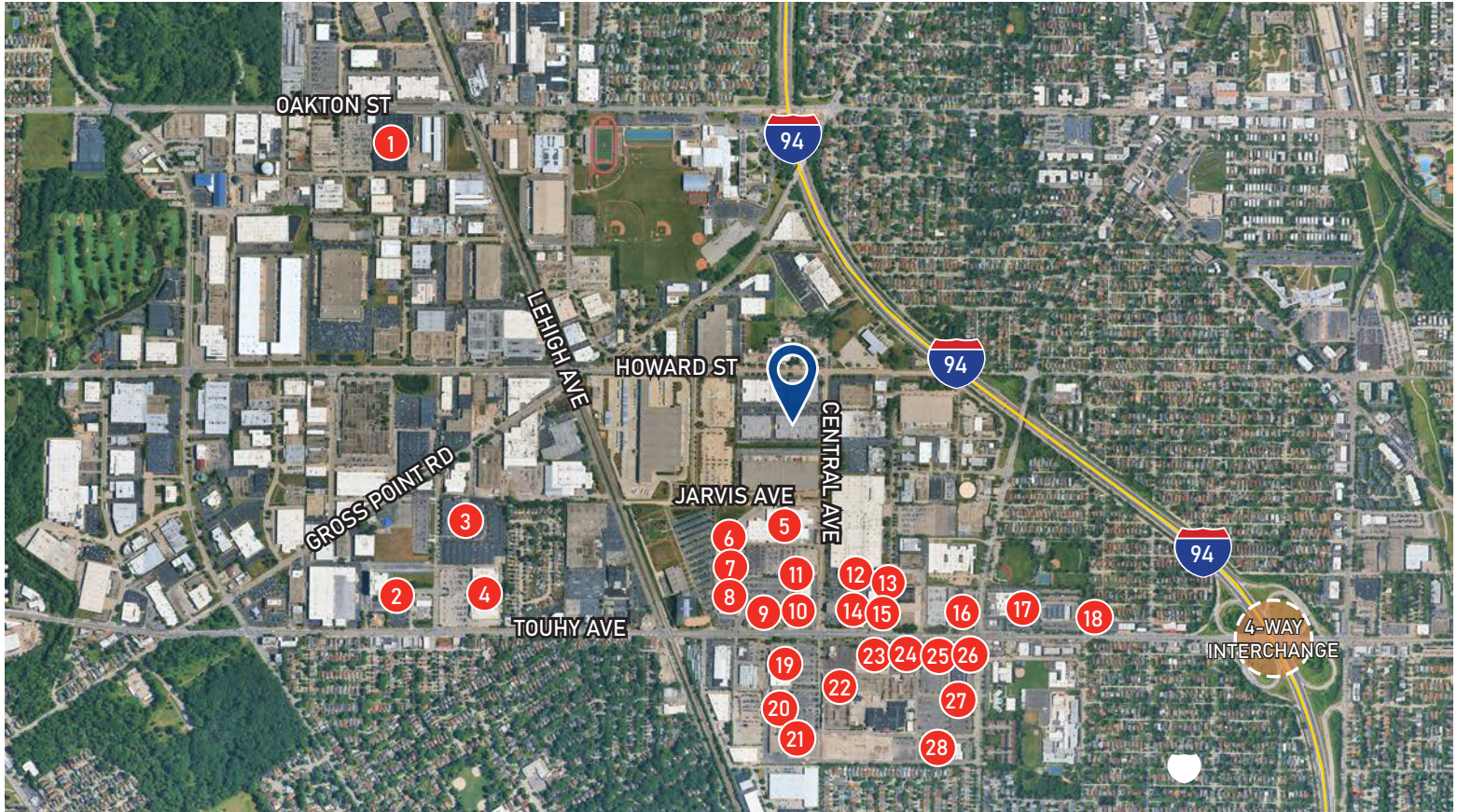
COLLIERS
6250 N. River Road, Suite 11-100
Rosemont, IL 60018
www.colliers.com

No warranty or representation is made to the accuracy of the foregoing information.
Terms of sale or lease and availability are subject to change or withdrawal without notice.

5657 Howard Street - Niles, IL



5657 Howard Street - Niles, IL



- | | | | |
|---------------------------------------------------------------------------------------|----------------------------------------------------------------------------------------|-----------------------------------------------------------------------------------------|------------------------------------------------------------------------------------------|
| 1  | 8  | 15  | 22  |
| 2  | 9  | 16  | 23  |
| 3  | 10  | 17  | 24  |
| 4  | 11  | 18  | 25  |
| 5  | 12  | 19  | 26  |
| 6  | 13  | 20  | 27  |
| 7  | 14  | 21  | 28  |