

OREM WAREHOUSE FOR SUBLEASE

PRIME-LOCATION WAREHOUSE NEAR UVU CAMPUS AND I-15

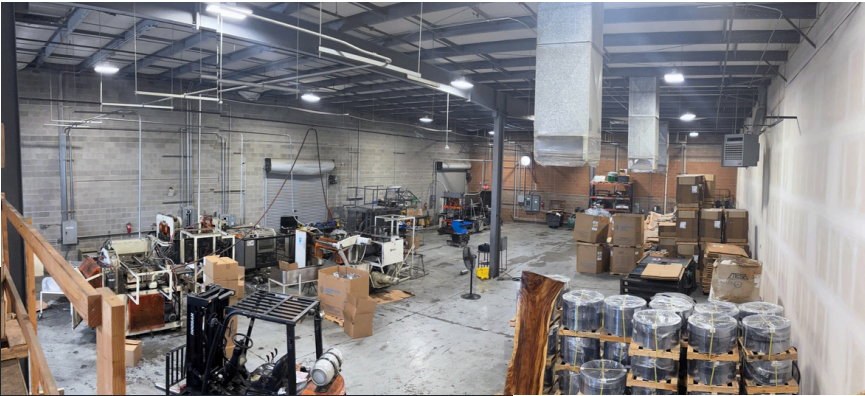
1039 S 1680 W Orem, UT

OREM WAREHOUSE SUBLEASE

This sublease warehouse space offers plenty of power for any manufacturing/power needs you may have. Its location provides easy access to two I-15 on-ramps. Term can be flexible - from as short as around 20 months, to up to 5 years (we can help secure a longer term directly with the landlord, up front). Reach out to a listing agent today for a tour!



PROPERTY HIGHLIGHTS



- > Rate: 1.40 Modified Gross
 - > Square Footage: 8,194 SF
 - > Sublease Term: Through July 31, 2027 (Can secure longer term with landlord, up front)
 - > Clear Height: 20
 - > Parking: Shared cross-parking
 - > One Ground Level Door: 12 ft Wide 14 ft Tall
 - > Warehouse Sprinklers: Yes
 - > Reception/Waiting area
 - > 1 Additional Office Space
- Mezzanine included for additional storage (used as break room currently)
- Power: 3-phase, 600 Amps, 480 volt

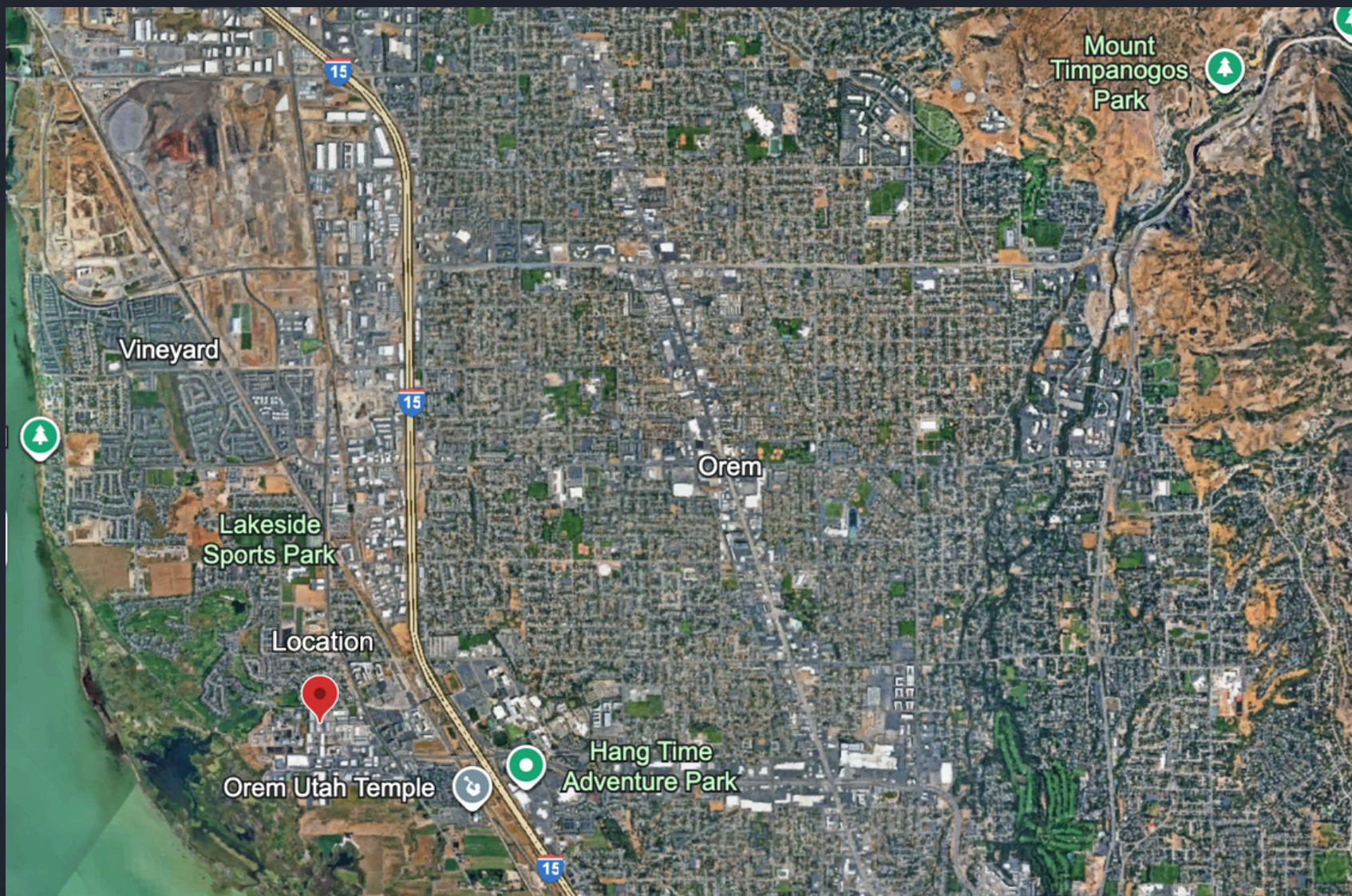




AERIAL VIEW



AERIAL VIEW



**CONTACT US TODAY
FOR A PRIVATE TOUR!**

Kevin Ford - Kevin@Coreutah.com - 801-473-6519

Aaron Cook - Aaron@Coreutah.com - 801-787-7255



1039 S 1680 W Orem, UT