

Heritage Elementary School

Public Storage

Publix

CROSS CREEK BLVD
35,000 AADT

DUNKIN'



MEADOWS ROAD LAND FOR SALE

18202 Meadows Road, Tampa, FL 33647

MOHAMMAD MUSTAFA
Managing Broker
813.385.6021
mustafa@nationrs.com

MOHANAD RIFAIE
Senior Associate
813.777.1854
mrifaie@nationrs.com

NOOR AUDI
Senior Associate
813.990.9465
naudi@nationrs.com



For Sale

18202 E MEADOWS RD



PROPERTY DESCRIPTION

3.14 acres of land available for sale at 18202 E Meadows Road, offering a flexible opportunity for investors, developers, land bankers, or owner-users seeking a sizeable parcel in the growing Tampa-area market.

The property provides room for a variety of potential future uses, subject to zoning and government approvals, and is well-positioned for long-term growth, strategic land banking, or future development planning. With continued expansion throughout the greater Tampa region, this site presents a strong opportunity to secure land in an area with long-term upside potential.

OFFERING SUMMARY

Sale Price:	\$1,250,000
Lot Size:	3.14 Acres

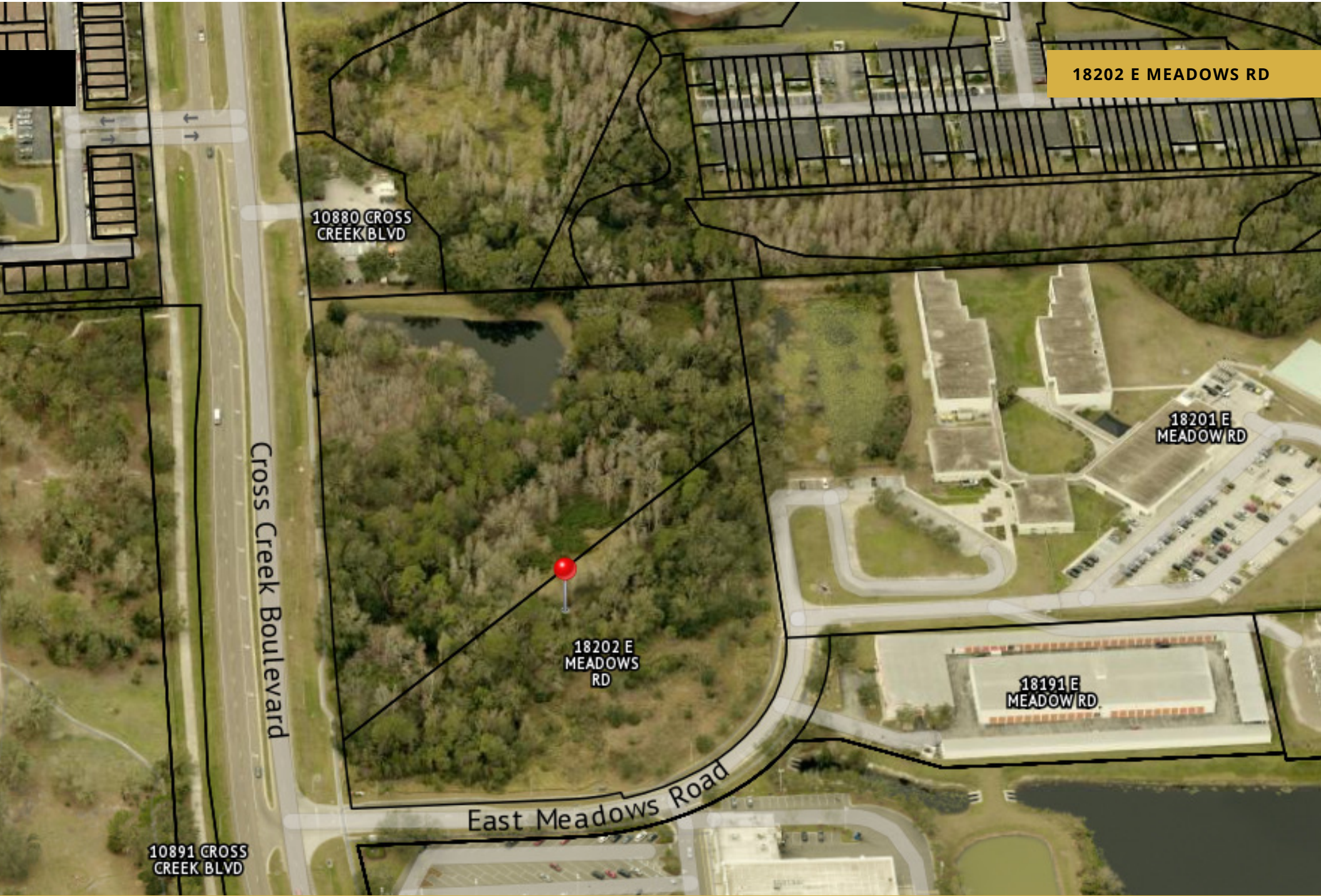
PROPERTY HIGHLIGHTS

- Acreage: 3.14 acres
- Location: 18202 E Meadows Road
- Opportunity: Land available for sale in a growing Tampa Bay market
- Flexibility: Potential for multiple future uses, subject to zoning and approvals
- Buyer Profile: Ideal for investors, developers, land bankers, or owner-users
- Growth Market: Positioned within the expanding East Tampa / Hillsborough County region
- Strategic Hold: Suitable for long-term investment or future development planning

MOHAMMAD MUSTAFA
Managing Broker
813.385.6021
mustafa@nationrs.com

MOHANAD RIFAIE
Senior Associate
813.777.1854
mrifaie@nationrs.com

NOOR AUDI
Senior Associate
813.990.9465
naudi@nationrs.com



18202 E MEADOWS RD

10880 CROSS CREEK BLVD

Cross Creek Boulevard

18202 E MEADOWS RD

18201 E MEADOW RD

18191 E MEADOW RD

East Meadows Road

10891 CROSS CREEK BLVD

MOHAMMAD MUSTAFA
Managing Broker
813.385.6021
mustafa@nationrs.com

MOHANAD RIFAIE
Senior Associate
813.777.1854
mrifaie@nationrs.com

NOOR AUDI
Senior Associate
813.990.9465
naudi@nationrs.com



For Sale

18202 E MEADOWS RD

Heritage Elementary School



Branchton Park

k Blvd

Cross Creek Blvd

Cross Creek Blvd

Cross Creek Blvd

Cross Creek Blvd

Meadows Rd

Morris Bridge Rd

Google

MOHAMMAD MUSTAFA
Managing Broker
813.385.6021
mustafa@nationrs.com

MOHANAD RIFAIE
Senior Associate
813.777.1854
mrifaie@nationrs.com

NOOR AUDI
Senior Associate
813.990.9465
naudi@nationrs.com



For Sale

18202 E MEADOWS RD



MOHAMMAD MUSTAFA
Managing Broker
813.385.6021
mustafa@nationrs.com

MOHANAD RIFAIE
Senior Associate
813.777.1854
mrifaie@nationrs.com

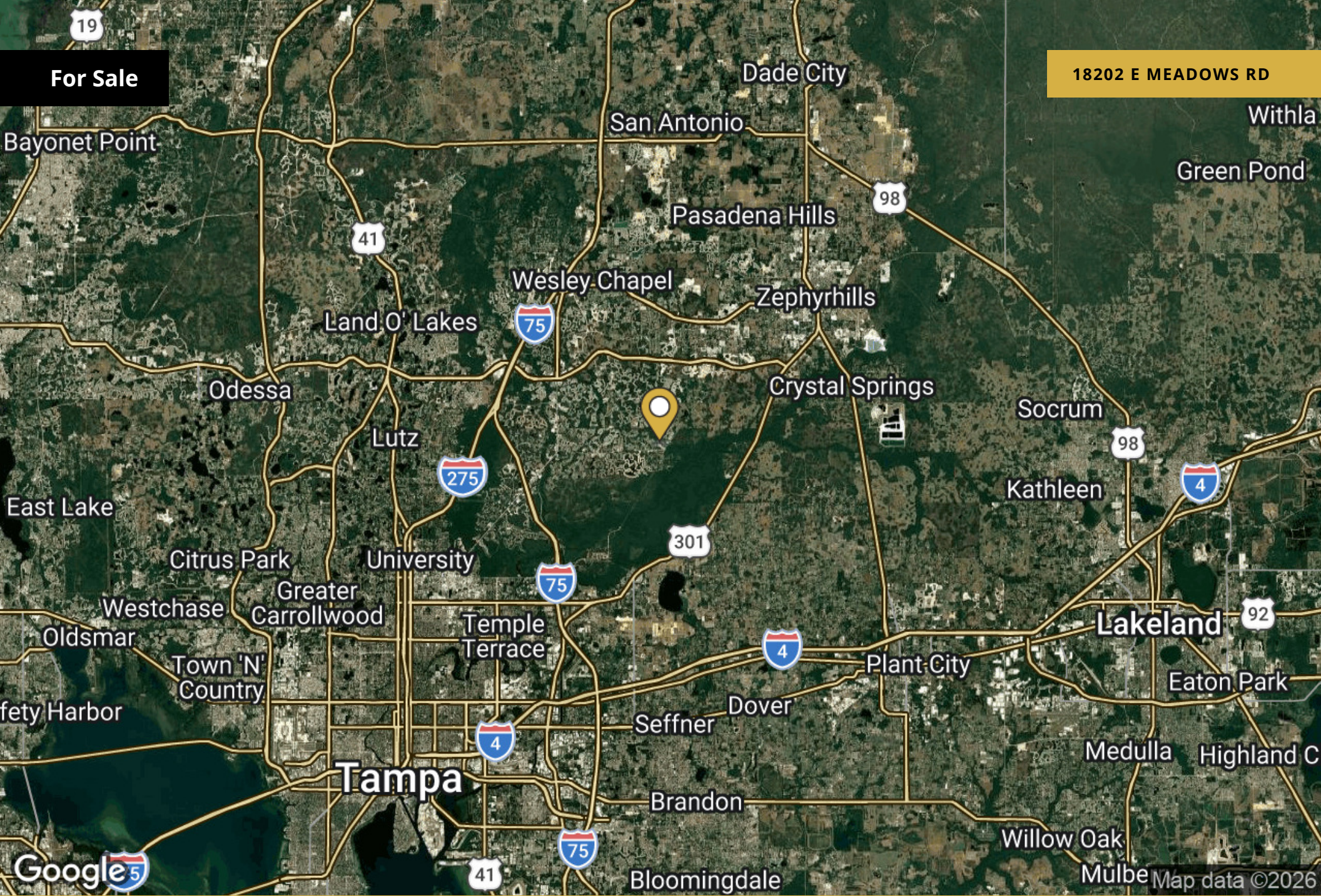
NOOR AUDI
Senior Associate
813.990.9465
naudi@nationrs.com



19

For Sale

18202 E MEADOWS RD



MOHAMMAD MUSTAFA
 Managing Broker
 813.385.6021
 mustafa@nationrs.com

MOHANAD RIFAIE
 Senior Associate
 813.777.1854
 mrifaie@nationrs.com

NOOR AUDI
 Senior Associate
 813.990.9465
 naudi@nationrs.com

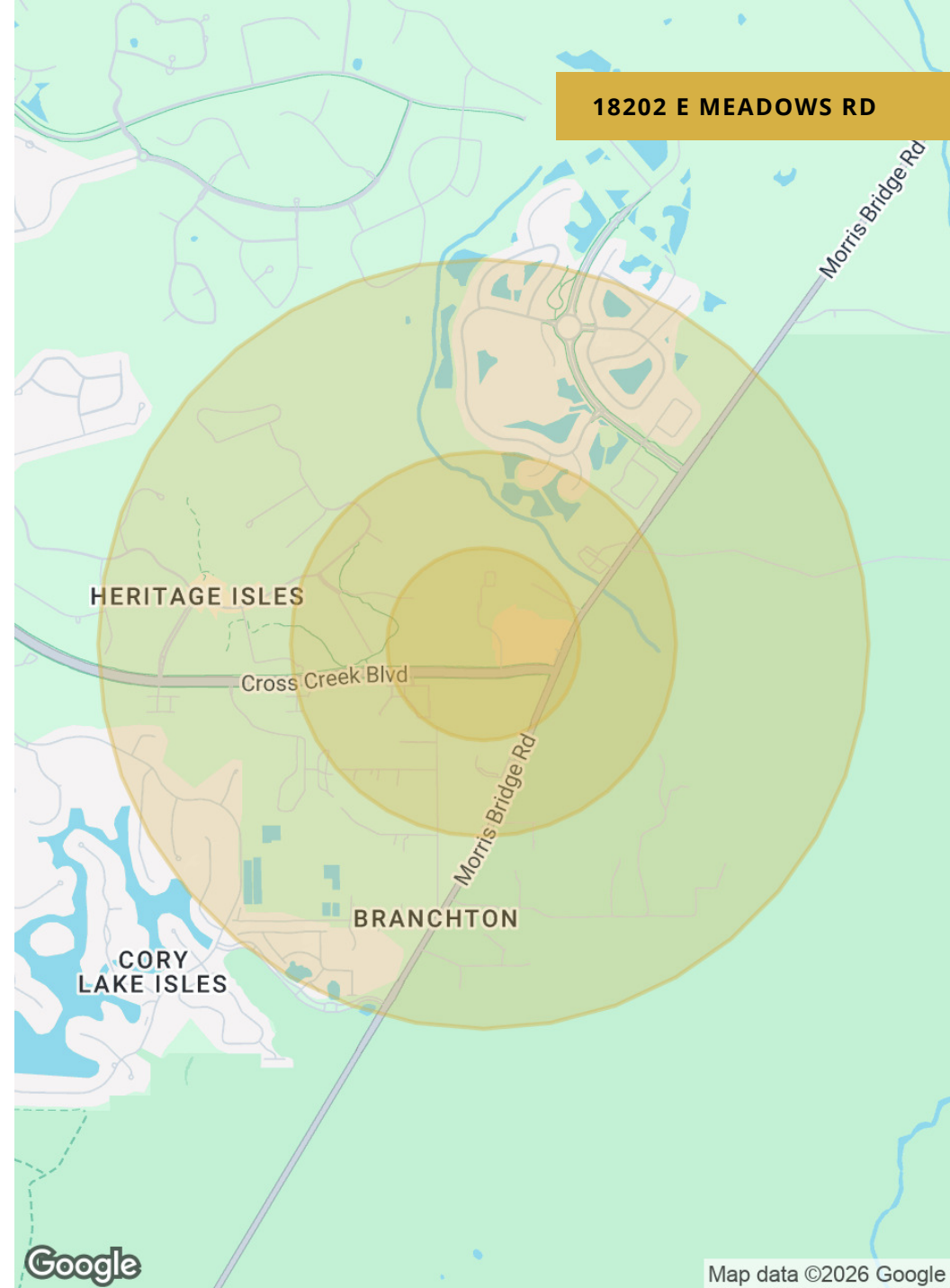


Demographics Map & Report

POPULATION	0.25 MILES	0.5 MILES	1 MILE
Total Population	393	1,349	4,501
Average Age	31.6	31.2	31.9
Average Age (Male)	29.0	28.5	29.5
Average Age (Female)	31.3	31.1	31.7

HOUSEHOLDS & INCOME	0.25 MILES	0.5 MILES	1 MILE
Total Households	131	448	1,490
# of Persons per HH	3.0	3.0	3.0
Average HH Income	\$139,179	\$137,285	\$143,998
Average House Value	\$397,094	\$391,870	\$418,683

2023 American Community Survey (ACS)



18202 E MEADOWS RD

Map data ©2026 Google

MOHAMMAD MUSTAFA
 Managing Broker
 813.385.6021
 mustafa@nationrs.com

MOHANAD RIFAIE
 Senior Associate
 813.777.1854
 mrifaie@nationrs.com

NOOR AUDI
 Senior Associate
 813.990.9465
 naudi@nationrs.com



Community Map



Map data ©2026 Imagery ©2026 Airbus, Landsat / Copernicus,

MOHAMMAD MUSTAFA
Managing Broker
813.385.6021
mustafa@nationrs.com

MOHANAD RIFAIE
Senior Associate
813.777.1854
mrifaie@nationrs.com

NOOR AUDI
Senior Associate
813.990.9465
naudi@nationrs.com

