

2108

ADAM CLAYTON POWELL JR. BOULEVARD
HARLEM, NYC

NW Corner of Adam Clayton Powell Jr. Boulevard & West 126th Street



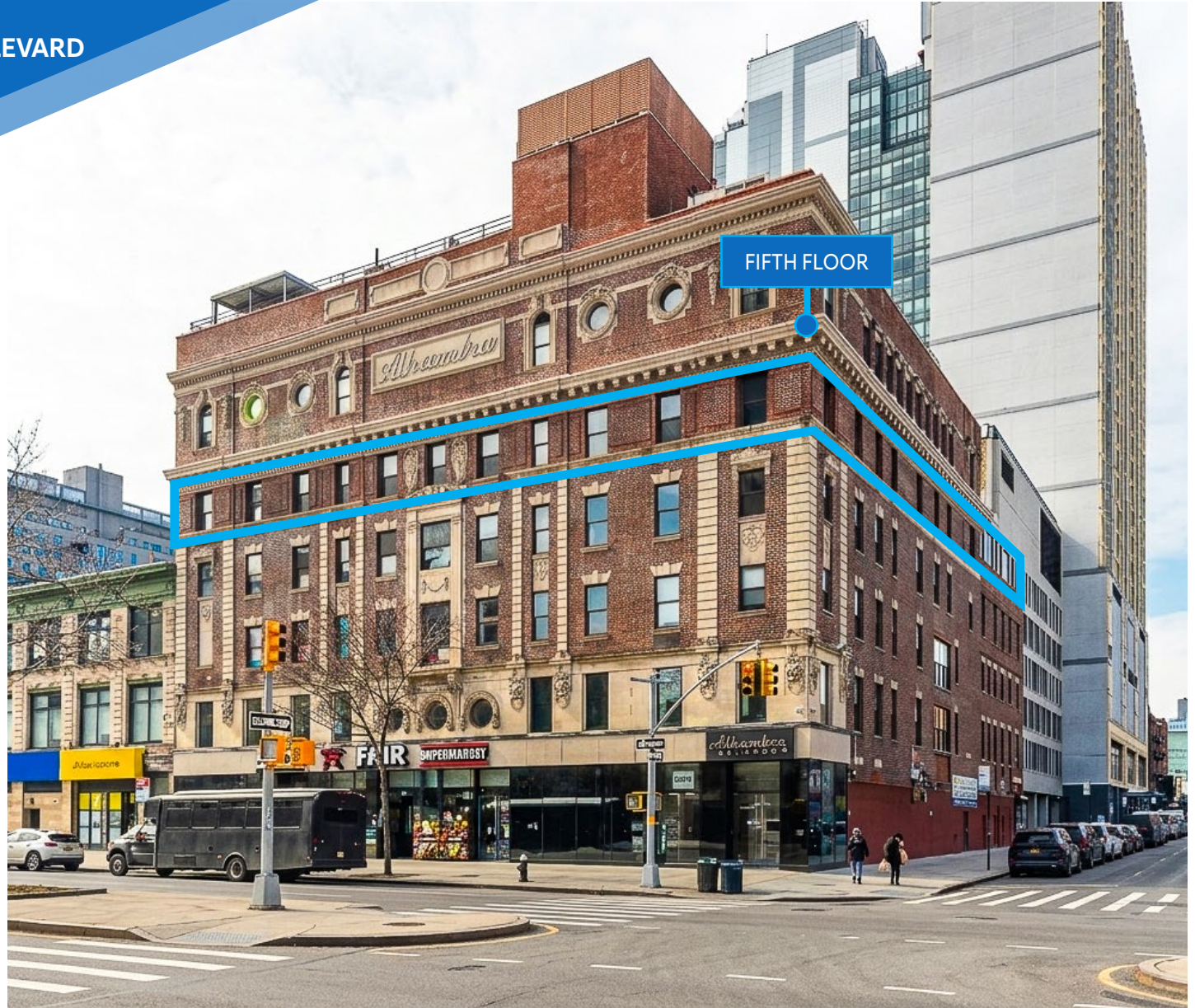
MERIDIAN
RETAIL LEASING

2108

ADAM CLAYTON POWELL JR. BOULEVARD HARLEM, NYC

NW Corner of Adam Clayton Powell Jr.
Boulevard & West 126th Street

OFFICE FOR LEASE



APPROXIMATE SIZE

Fifth Floor: 12,500 SF

ASKING RENT

Upon Request

POSSESSION

Immediate

TERM

Negotiable

COMMENTS

- Clean, rectangular floor plate maximizing efficiency
- Suitable for creative office, healthcare, education, or mission-driven users
- Landlord flexible on work letter / TI / free rent for qualified tenants
- Positioned along a prime Harlem corridor with strong neighborhood presence

NEIGHBORS

Chick Fil A • America's Kids • Planet Fitness • MAC • KFC • GAP • Foot Locker • Banana Republic • Old Navy • Chipotle • PC Richard & Son • AMC Theatres

TRANSPORTATION



NOAM AZIZ

Senior Director
212.468.5984
naziz@meridiancapital.com

WILL SINE

Associate
212.468.5945
wsine@meridiancapital.com

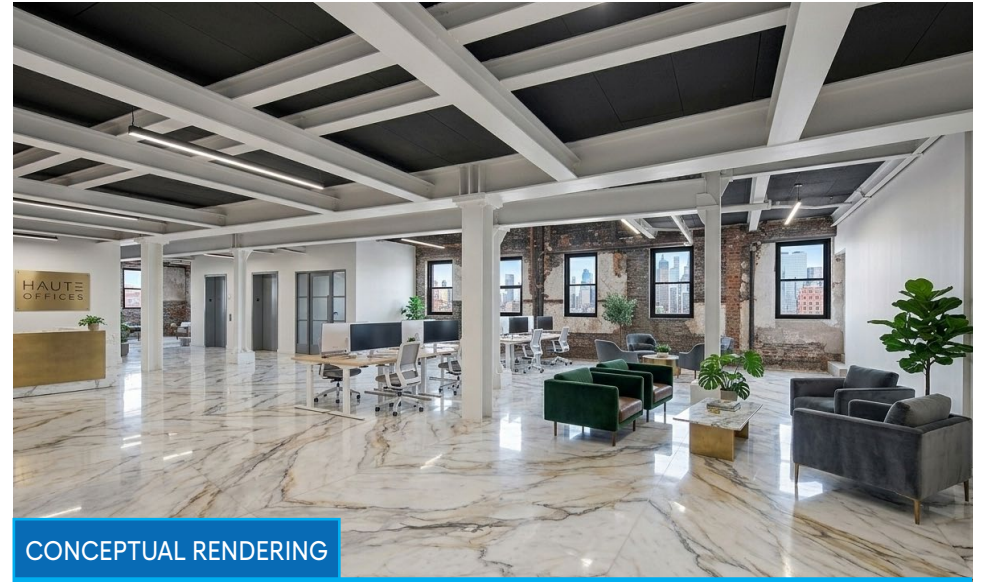
JASON BERISHA

Associate
212.468.5955
jberisha@meridiancapital.com



MERIDIAN
RETAIL LEASING

All information supplied is from sources deemed reliable and is furnished subject to errors, omissions, modifications, removal of the listing from sale or lease, and to any listing conditions, including the rates and manner of payment of commissions for particular offerings imposed by Meridian Capital Group. This information may include estimates and projections prepared by Meridian Capital Group with respect to future events, and these future events may or may not actually occur. Such estimates and projections reflect various assumptions concerning anticipated results. While Meridian Capital Group believes these assumptions are reasonable, there can be no assurance that any of these estimates and projections will be correct. Therefore, actual results may vary materially from these estimates and projections. Any square footage dimensions set forth are approximate.



CONCEPTUAL RENDERING



CONCEPTUAL RENDERING

INTERIOR

NOAM AZIZ
Senior Director
212.468.5984
naziz@meridiancapital.com

WILL SINE
Associate
212.468.5945
wsine@meridiancapital.com

JASON BERISHA
Associate
212.468.5955
jberisha@meridiancapital.com



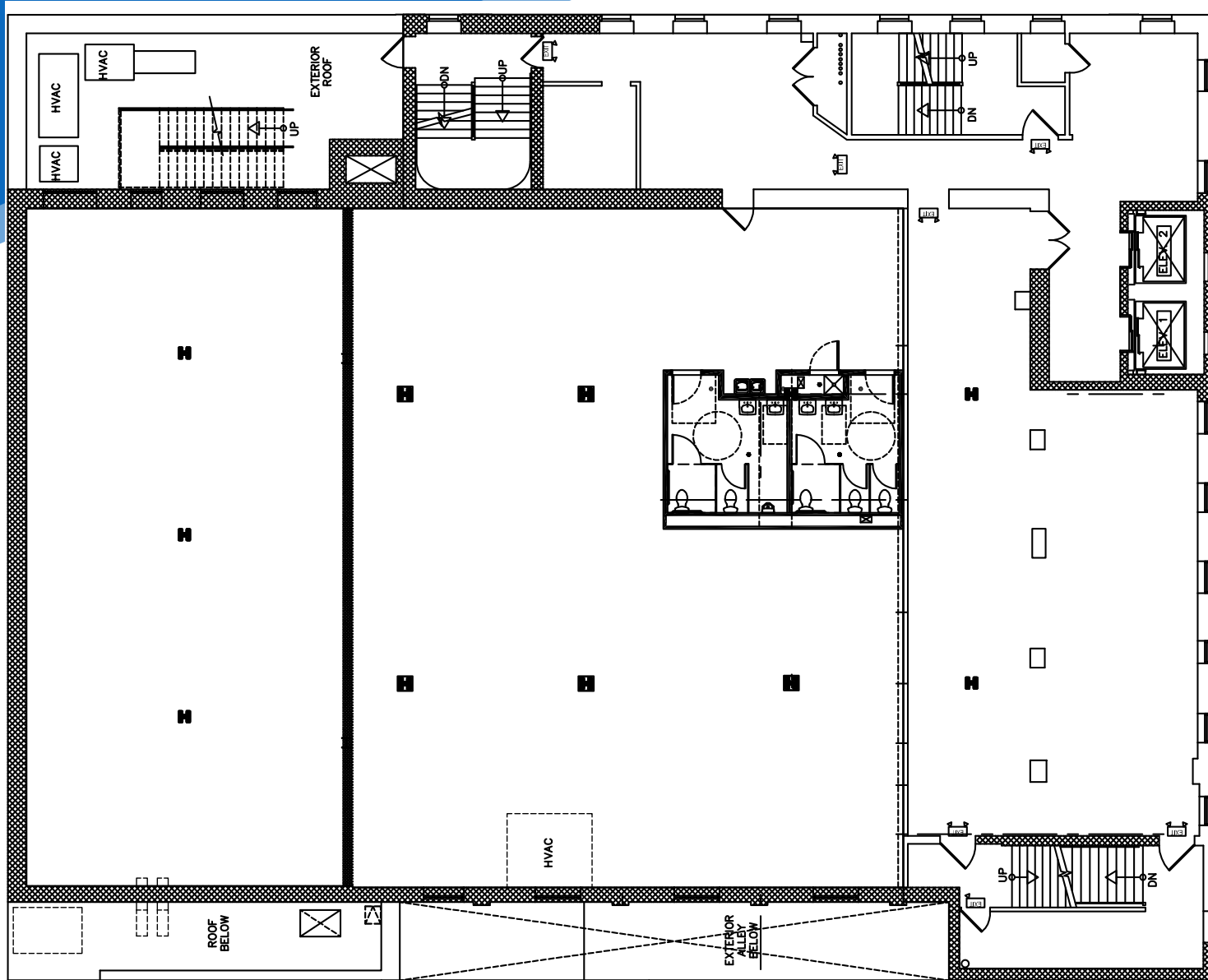
MERIDIAN
RETAIL LEASING

2108 ADAM CLAYTON POWELL JR. BOULEVARD

HARLEM, NYC | NW Corner of Adam Clayton Powell Jr. Boulevard and West 126th Street

EVENT SPACE FOR LEASE

FLOOR PLAN



ADAM CLAYTON POWELL JR. BOULEVARD

NOAM AZIZ

Senior Director
212.468.5984
naziz@meridiancapital.com

WILL SINE

Associate
212.468.5945
wsine@meridiancapital.com

JASON BERISHA

Associate
212.468.5955
jberisha@meridiancapital.com



MERIDIAN
RETAIL LEASING

All information supplied is from sources deemed reliable and is furnished subject to errors, omissions, modifications, removal of the listing from sale or lease, and to any listing conditions, including the rates and manner of payment of commissions for particular offerings imposed by Meridian Capital Group. This information may include estimates and projections prepared by Meridian Capital Group with respect to future events, and these future events may or may not actually occur. Such estimates and projections reflect various assumptions concerning anticipated results. While Meridian Capital Group believes these assumptions are reasonable, there can be no assurance that any of these estimates and projections will be correct. Therefore, actual results may vary materially from these estimates and projections. Any square footage dimensions set forth are approximate.

NEIGHBORS

ST NICHOLAS AVENUE

MANHATTAN AVENUE

FREDERICK DOUGLASS BLVD

ADAM CLAYTON POWELL JR BLVD

The map displays a grid of streets: W 127th Street, W 126th Street, W 125th Street, W 124th Street, and W 123rd Street. Businesses are represented by logos and text within colored blocks. A prominent blue callout bubble points to the address 2108 Adam Clayton Powell Jr. Boulevard. The map also shows the locations of St Nicholas Avenue, Manhattan Avenue, Frederick Douglass Blvd, and Adam Clayton Powell Jr Blvd.

2108
 ADAM CLAYTON
 POWELL JR.
 BOULEVARD

NOAM AZIZ
 Senior Director
 212.468.5984
 naziz@meridiancapital.com

WILL SINE
 Associate
 212.468.5945
 wsine@meridiancapital.com

JASON BERISHA
 Associate
 212.468.5955
 jberisha@meridiancapital.com



MERIDIAN
 RETAIL LEASING

All information supplied is from sources deemed reliable and is furnished subject to errors, omissions, modifications, removal of the listing from sale or lease, and to any listing conditions, including the rates and manner of payment of commissions for particular offerings imposed by Meridian Capital Group. This information may include estimates and projections prepared by Meridian Capital Group with respect to future events, and these future events may or may not actually occur. Such estimates and projections reflect various assumptions concerning anticipated results. While Meridian Capital Group believes these assumptions are reasonable, there can be no assurance that any of these estimates and projections will be correct. Therefore, actual results may vary materially from these estimates and projections. Any square footage dimensions set forth are approximate.