

2066 CLARMAR WAY

SAN JOSE, CALIFORNIA 95128



MEDICAL OFFICE FOR LEASE

PROPERTY HIGHLIGHTS

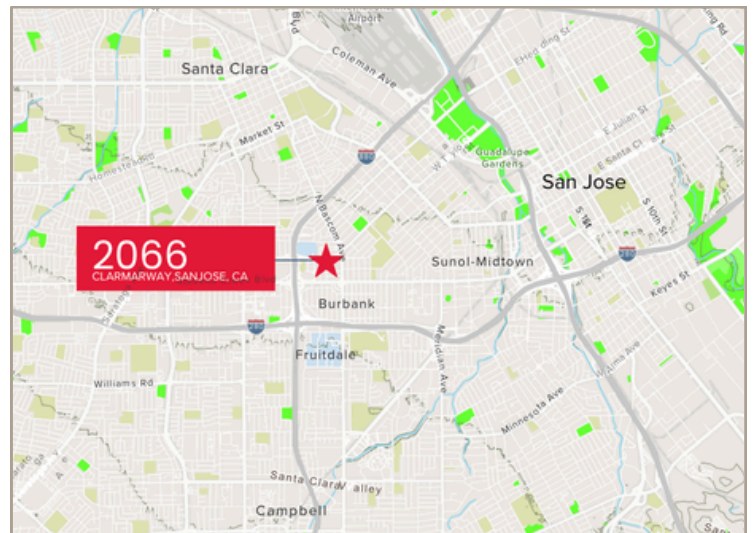
- Good for Medical, Counseling, Chiropractic, and General Office Use
- Easy access to Highways 880 & 280
- Near Santana Row & Westfield Mall, & O'Connor Hospital
- Ample Onsite Parking
- Elevator Served

AVAILABLE

- SUITE C (2nd Floor): ±750 RSF

LEASE RATE

- \$3.50/RSF GROSS



260 Los Gatos-Saratoga Rd., Los Gatos, CA 95030
Lic. 01902032 | 408.217.6000
www.healthmedrealty.com

No warranty or representation, express or implied is made as to the accuracy of the information contained herein, and the same is submitted subject to errors, omissions, changes of price, rental or other conditions, withdrawal without notice.

For Further Information, Please Contact:

Jeff Petulla

☎ 408-888-4859
✉ jeff@healthmedrealty.com
📄 Lic. 00852399



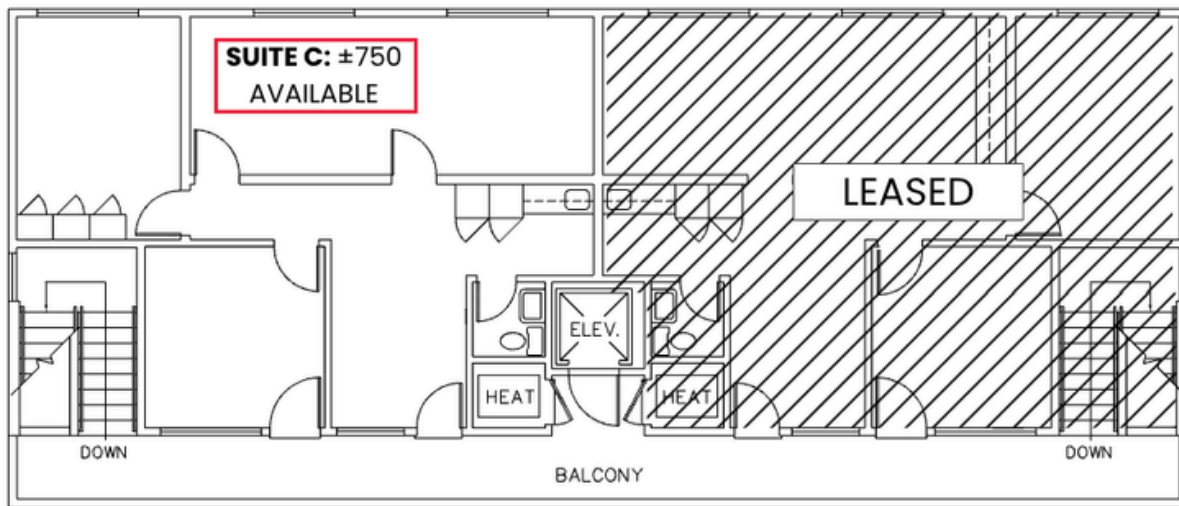
2066 CLARMAR WAY

SAN JOSE, CALIFORNIA 95128

FLOOR PLAN

SUITE C: ±750 RSF

SECOND FLOOR



Drawing not to scale. Dimensions are approximate



260 Los Gatos-Saratoga Rd., Los Gatos, CA 95030
Lic. 01902032 | 408.217.6000
www.healthmedrealty.com

No warranty or representation, express or implied is made as to the accuracy of the information contained herein, and the same is submitted subject to errors, omissions, changes of price, rental or other conditions, withdrawal without notice.

For Further Information, Please Contact:

Jeff Petulla

☎ 408-888-4859

✉ jeff@healthmedrealty.com

🏠 Lic. 00852399



2066 CLARMAR WAY

SAN JOSE, CALIFORNIA 95128

PHOTOS

SUITE C: ±750 RSF



260 Los Gatos-Saratoga Rd., Los Gatos, CA 95030
Lic. 01902032 | 408.217.6000
www.healthmedrealty.com

No warranty or representation, express or implied is made as to the accuracy of the information contained herein, and the same is submitted subject to errors, omissions, changes of price, rental or other conditions, withdrawal without notice.

For Further Information, Please Contact:

Jeff Petulla

☎ 408-888-4859

✉ jeff@healthmedrealty.com

📄 Lic. 00852399

