

Eastgate

4840 Eastgate Mall | First Floor

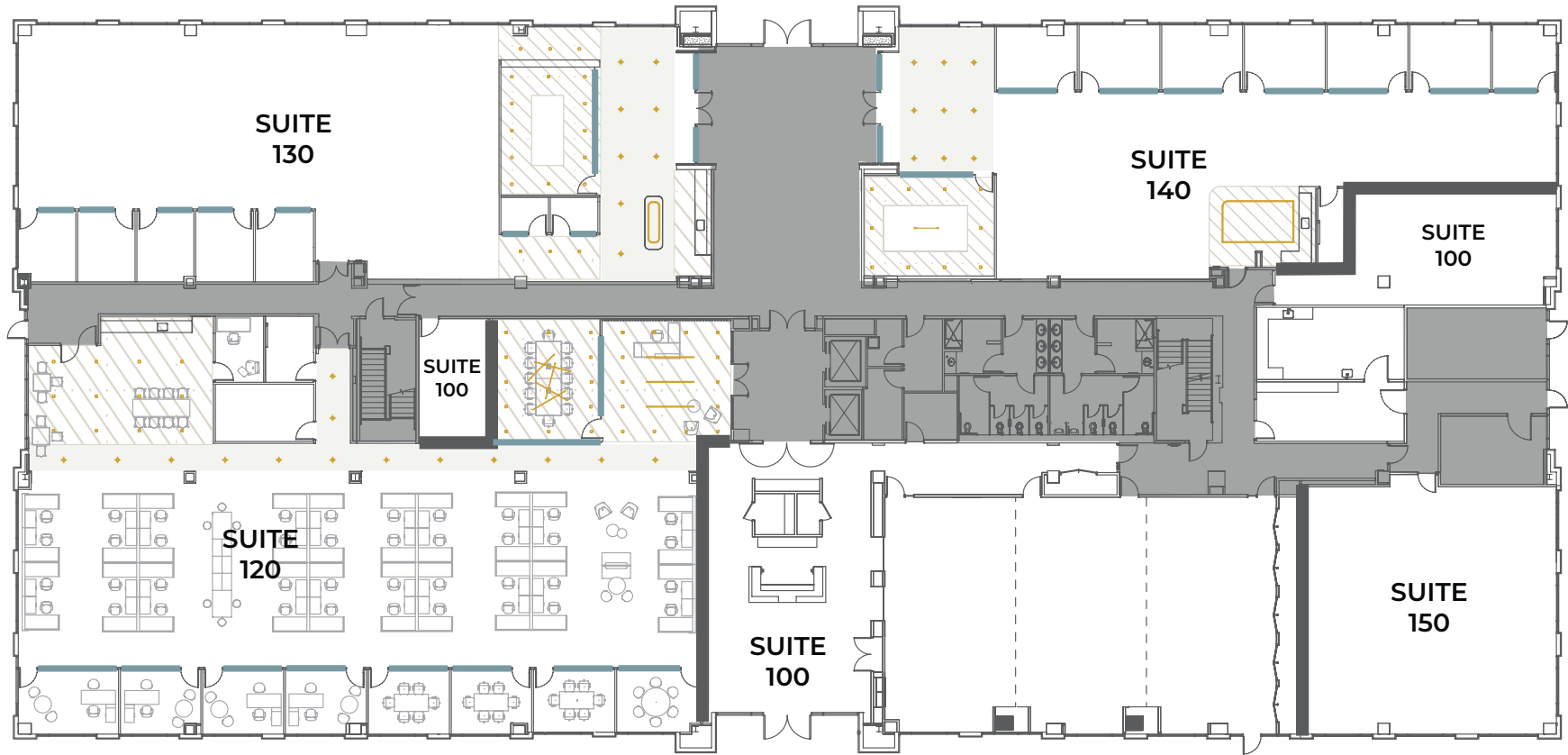
Flex+[®]
BY IRVINE COMPANY



artist rendering

4840 Eastgate Mall

floor 1



GLASS LIGHTS OPEN CEILING HARD LID CEILING

○ 3 new, premium move-in ready suites ranging from 5.4K - 9.5K SF (Arriving Spring 2026)

○ High-end finishes include open ceiling, specialty lighting and premium break areas

○ Convenient access to newly reinvested outdoor workspaces, complete with WiFi and shaded seating in a vibrant setting



4840 Eastgate Mall

suite 120

total
size

±9,596 sqft

team
size

±43

private
offices

5

meeting
rooms

5



FURNISHED



GLASS



LIGHTS



OPEN CEILING



HARD LID CEILING



4840 Eastgate Mall
suite 120



artist rendering

glass partitions + hard lid ceiling + polished concrete + specialty lighting + wood slat feature wall



4840 Eastgate Mall

suite 120



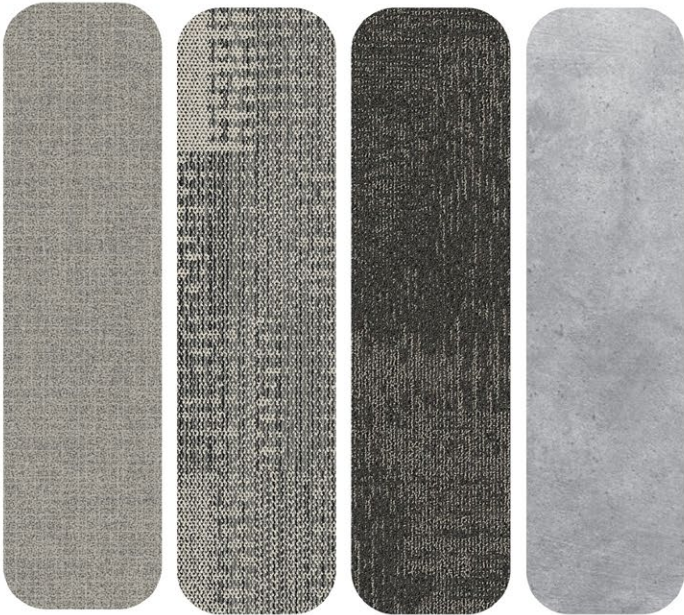
artist rendering

built-in appliances + matte black hardware + modern backsplash + stone countertop

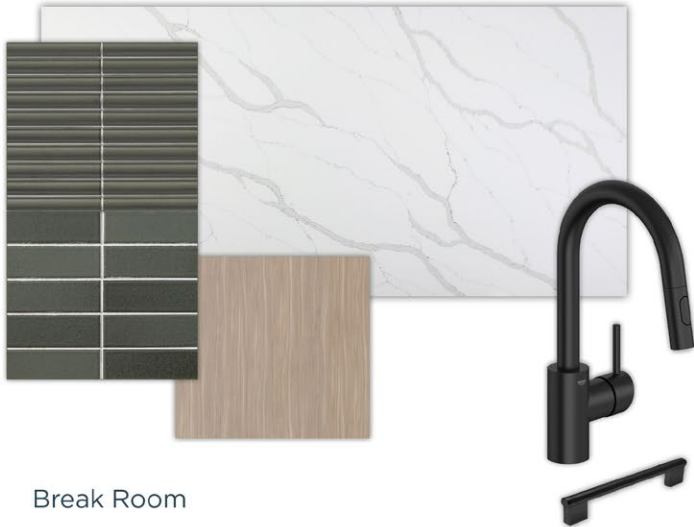


4840 Eastgate Mall

suite 120



Flooring



Break Room



Paint Scheme



4840 Eastgate Mall

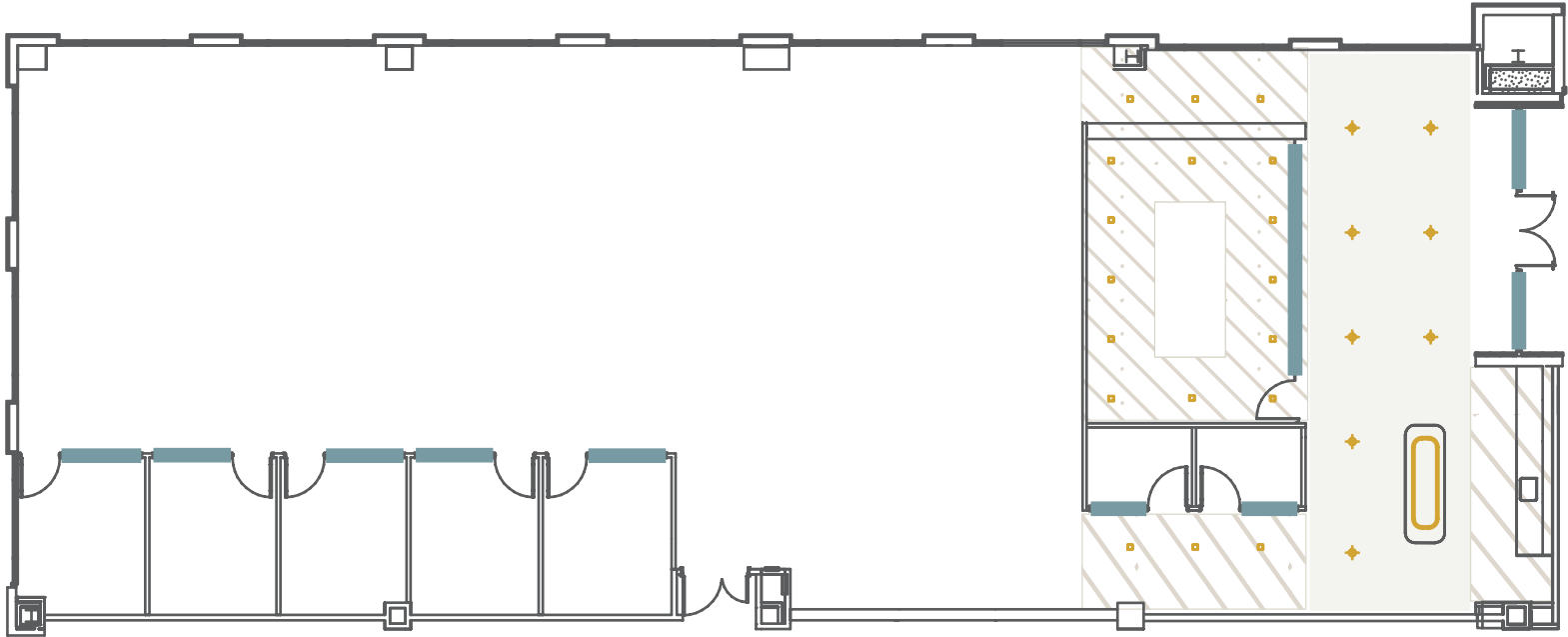
suite 130

total size
±6,256 sqft

team size
±28

private offices
5

meeting rooms
3

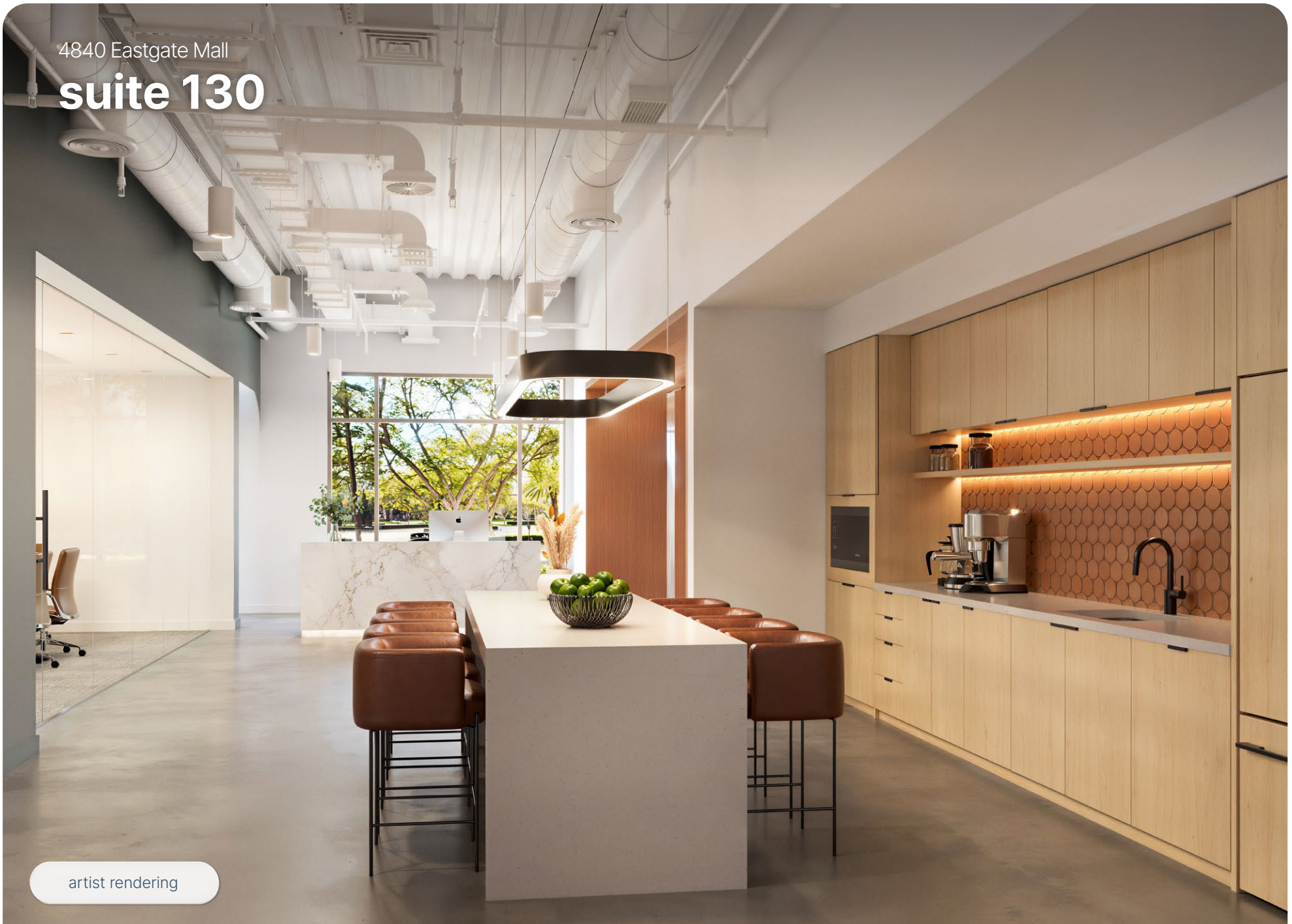


— GLASS LIGHTS OPEN CEILING HARD LID CEILING



4840 Eastgate Mall

suite 130



artist rendering

built-in appliances + matte black hardware + modern backsplash + open ceiling + stone countertop

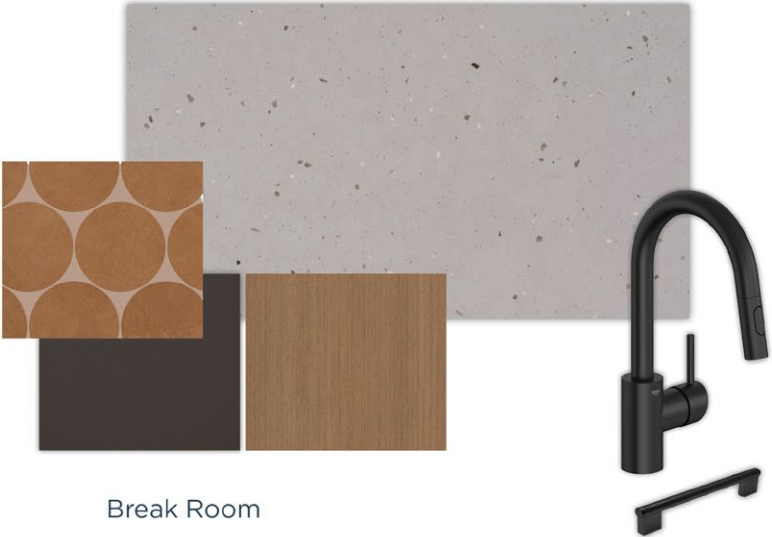


4840 Eastgate Mall

suite 130



Flooring



Break Room



Paint Scheme



4840 Eastgate Mall

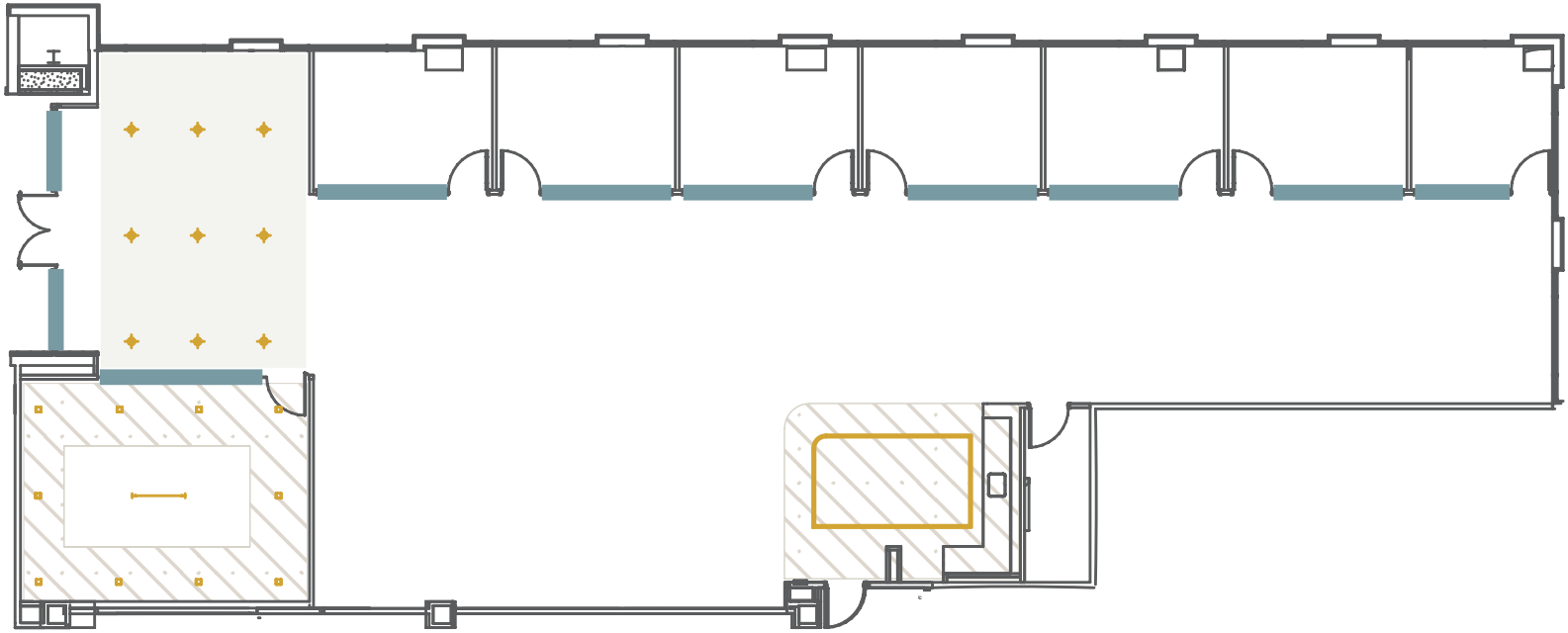
suite 140

total size
±5,478 sqft

team size
±24

private offices
7

meeting room
1

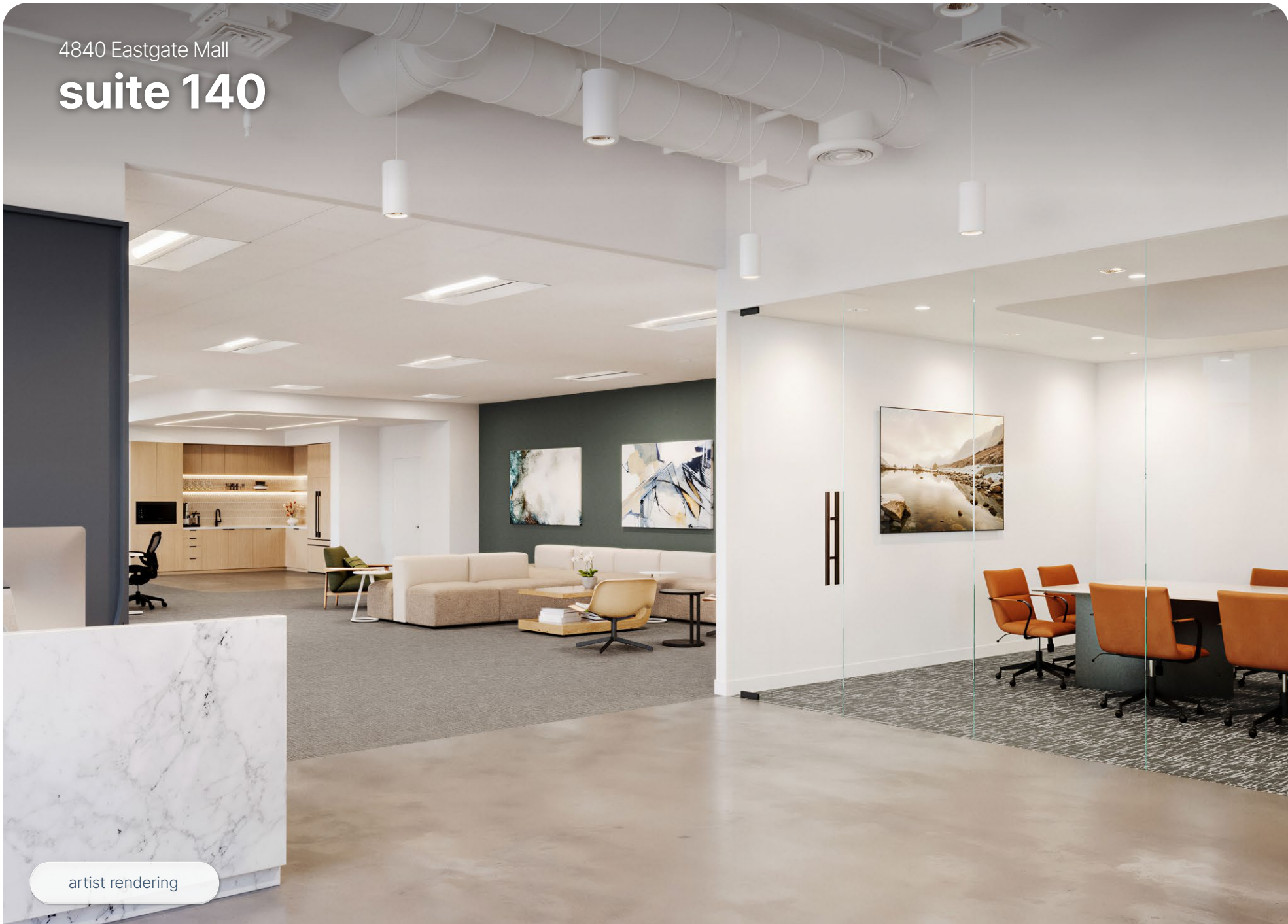


— GLASS ☼ LIGHTS ■ OPEN CEILING ▨ HARD LID CEILING



4840 Eastgate Mall

suite 140



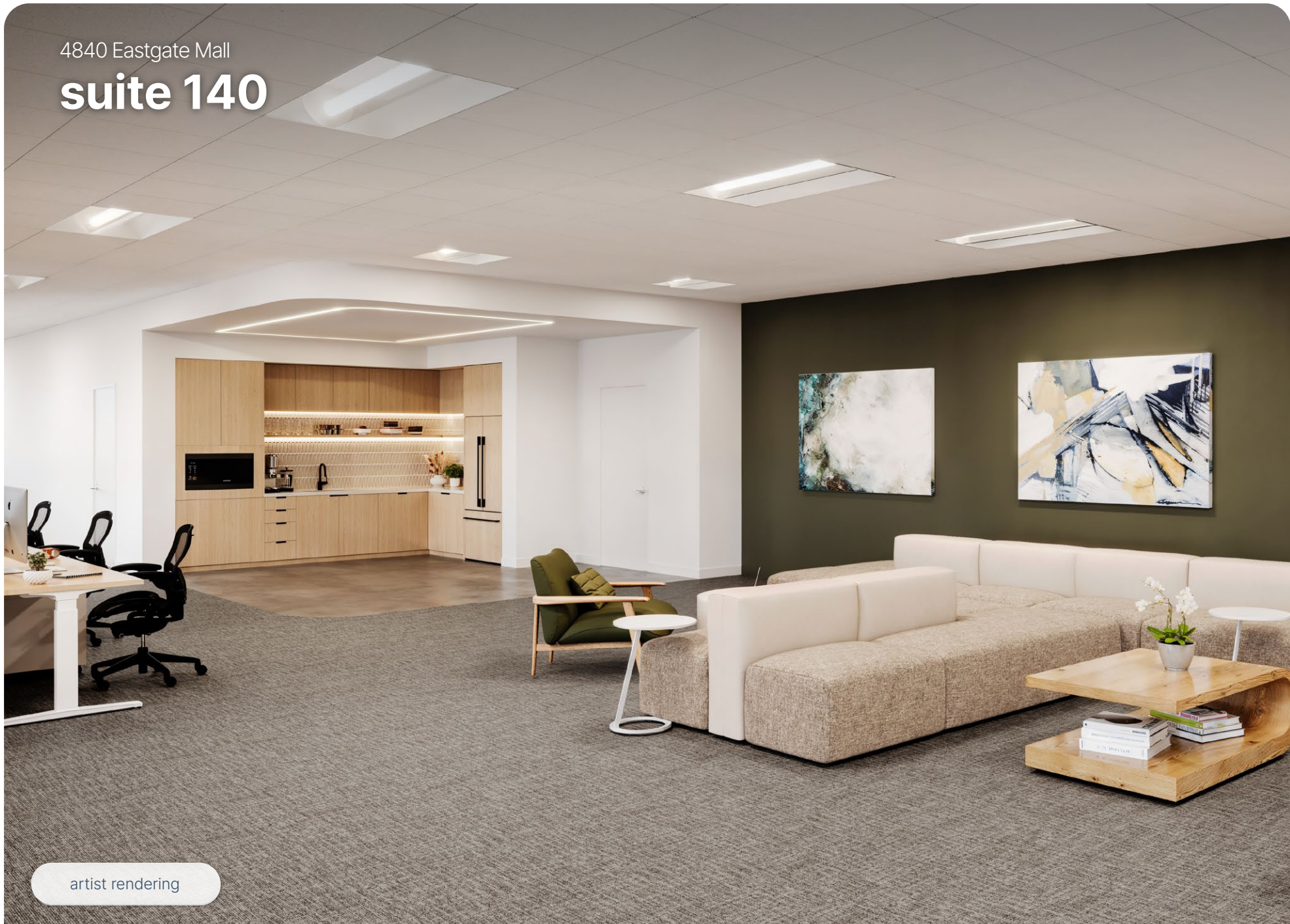
artist rendering

glass partitions + open ceiling + polished concrete + specialty lighting



4840 Eastgate Mall

suite 140

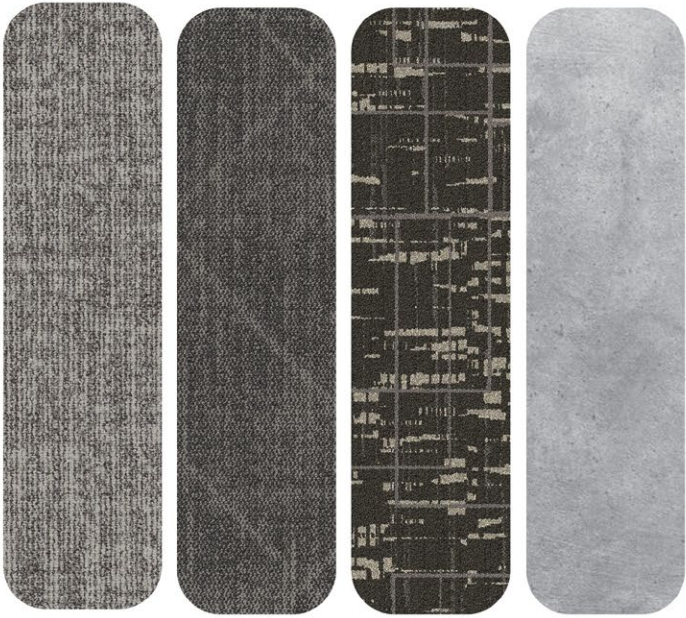


artist rendering

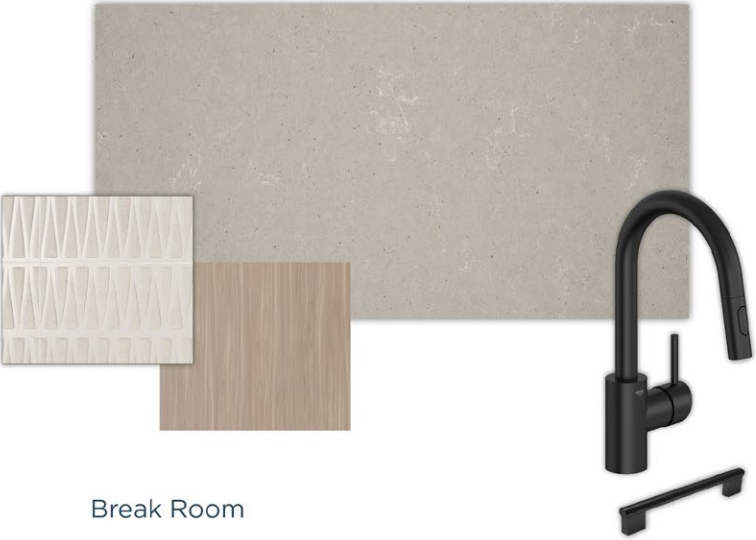
built-in appliances + matte black hardware + modern backsplash + stone countertop



4840 Eastgate Mall
suite 140



Flooring



Break Room



Paint Scheme



eastgate



N
MAP NOT TO SCALE

- 
 BASKETBALL COURT
- 
 CAFE/
 RESTAURANT
- 
 CONFERENCE CENTER
- 
 EV CHARGING
- 
 FITNESS
- 
 OUTDOOR WORKSPACE
 (WIFI-ENABLED)
- 
 PICKLEBALL
- 
 PUTTING GREEN
- 
 RETAIL
- 
 VOLLEYBALL
- 
 WALKING PATH



outdoor workspace



flexplus.com | 858.658.7700

All properties for lease by Irvine Management Company, a licensed real estate broker, DRE LIC. #02041810.
Product and amenities are subject to availability. Images may not be to scale. Not all features available in all communities, furniture not included.
Not a representation or warranty. Flex+ is a registered trademark of Irvine Management Company. ©2026 Irvine Management Company. All Rights Reserved. The Sunwave and Irvine Company are registered trademarks of Irvine Management Company.

Flex+
BY IRVINE COMPANY