



Digitally Altered image.
Scan to view Unaltered image.



WAREHOUSE



MULTIPLE LOADING OPTIONS



PRIVATE OFFICES

NOW LEASING

WAREHOUSE, MANUFACTURING
& DISTRIBUTION FLEXIBILITY

FROM ±17,608 SF TO
±150,347 SF CONFIGURATIONS

AMPLE PARKING

2717 AVIATION WAY SANTA MARIA CA - 93455

±230,000 SF Industrial Campus on ±12 Acres
Strategically Located in the Santa Maria
Airport Industrial Area

PRESENTED BY

ROB HAMBLETON
805.879.9611
rhambleton@radiusgroup.com
CA LIC. 1858350

PAUL GAMBERDELLA
805.879.9622
pgamberdella@radiusgroup.com
CA LIC. 1267748

JAY PEET
805.234.4008
jpeet@radiusgroup.com
CA LIC. 1779282



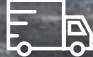
© 5/12/26 Radius Group Commercial Real Estate, Inc. DRE lic. 01334755. All rights reserved. Content and/or images may not be used without permission. The information provided here has been obtained from the owner of the property or from other sources deemed reliable. We have no reason to doubt its accuracy, but we do not guarantee it.

2717 AVIATION WAY SANTA MARIA CA - 93455

Efficient access to the US 101 Fwy, CA Hwy 135,
central Santa Maria business district,
and the Santa Maria Airport

5 Min. 

SANTA MARIA AIRPORT

8 Min. 

US 101 FWY @ SANTA MARIA WAY

2717 AVIATION WAY

6 Min. 

CA HWY 135 @ MCCOY RD

12 Min. 

CENTRAL SANTA MARIA BUSINESS DISTRICT



Digitally Altered image.
Scan to view Unaltered image.

PRESENTED BY

ROB HAMBLETON
805.879.9611
rhambleton@radiusgroup.com
CA LIC. 1858350

PAUL GAMBERDELLA
805.879.9622
pgamberdella@radiusgroup.com
CA LIC. 1267748

JAY PEET
805.234.4008
jpeet@radiusgroup.com
CA LIC. 1779282



2717 AVIATION WAY
SANTA MARIA CA - 93455

Sizes

±17,608 SF – ±150,347 SF

Lease Rate

\$1.00/SF NNN

City Water Service

4" Domestic, 8" Fire

SoCal Gas

1.5" Natural Gas Service

Sewer Service

6" Discharge, 8" Main

Power

Two @ 277/480 Volts & 1,600 Amps

Restrooms

Multiple Restroom Cores

Floor Drains

Various Locations

Temperate Controlled Areas

Mechanical Night Air

Loading

Truck Scale

Rail Service

Accessible

Zoning

PDM1

Offering Specifics

This ±230,000 square foot Industrial Facility is situated on ±12 acres of PDM-1 zoned land in the Santa Maria Airport Industrial Area. The property enjoys easy access to the US 101 Freeway and CA Highway 135.

Constructed in phases, the buildings offer a variety of uses, from production to warehouse & distribution. Amenities include high ceilings, temperature controlled areas, floor drains, heavy power, covered storage/production areas, fire sprinklers and multiple loading options (dock wells, grade level loading and rail access). The buildings are either concrete tilt-up or steel with concrete slab loading areas.

PRESENTED BY

ROB HAMBLETON
805.879.9611
rhambleton@radiusgroup.com
CA LIC. 1858350

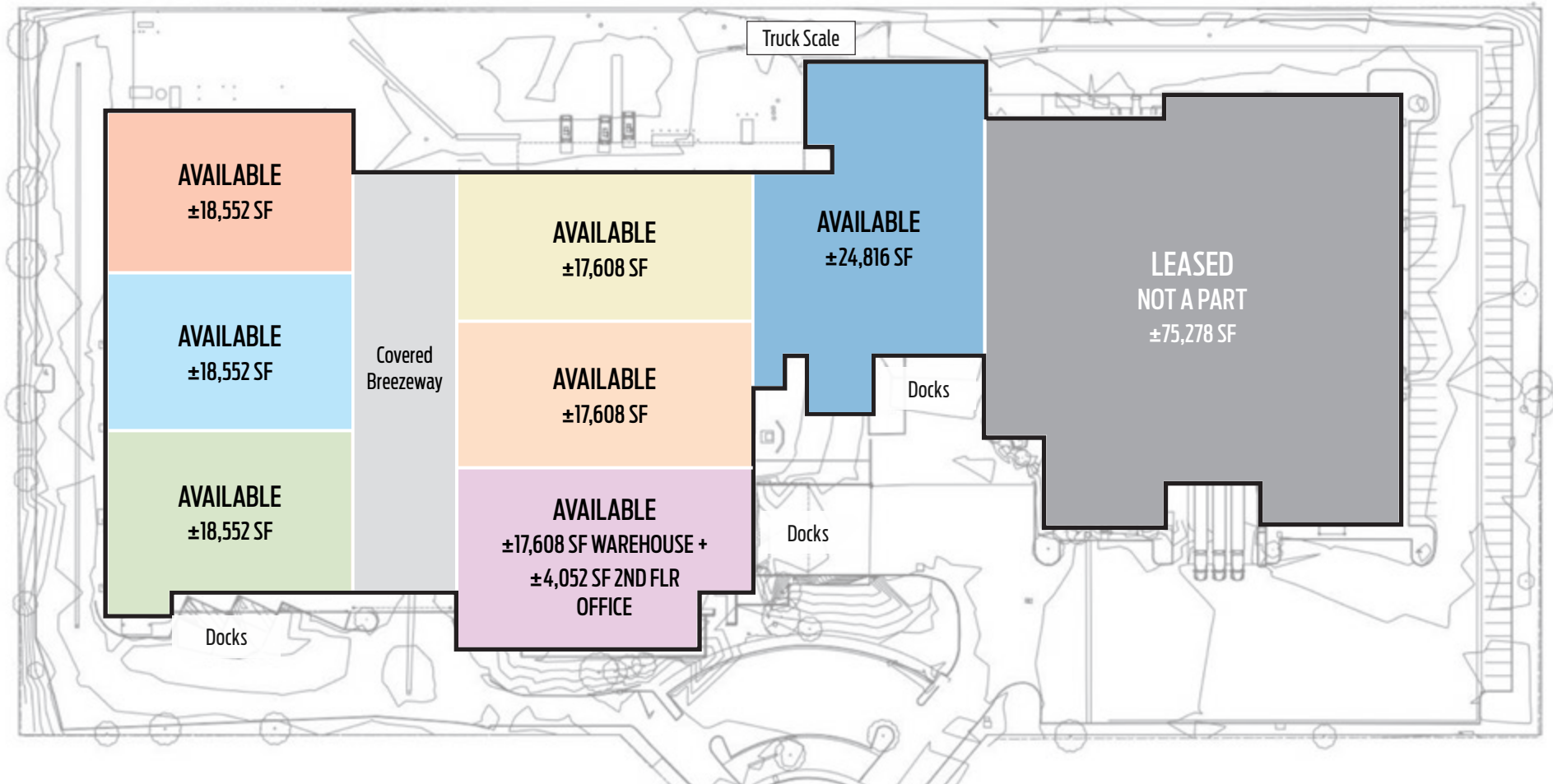
PAUL GAMBERDELLA
805.879.9622
pgamberdella@radiusgroup.com
CA LIC. 1267748

JAY PEET
805.234.4008
jpeet@radiusgroup.com
CA LIC. 1779282



Potential Demise Plan

Rail Spur



Not to scale

PRESENTED BY

ROB HAMBLETON
805.879.9611
rhambleton@radiusgroup.com
CA LIC. 1858350

PAUL GAMBERDELLA
805.879.9622
pgamberdella@radiusgroup.com
CA LIC. 1267748

JAY PEET
805.234.4008
jpeet@radiusgroup.com
CA LIC. 1779282



CENTRAL SANTA MARIA BUSINESS DISTRICT


2717 AVIATION WAY SANTA MARIA CA - 93455

Efficient access to the US 101 Fwy, CA Hwy 135, central Santa Maria business district, and the Santa Maria Airport

NORTH TO SAN FRANCISCO


268 Miles 

2717 AVIATION WAY

8 Min. 
US 101 FWY @ SANTA MARIA WAY

SANTA MARIA AIRPORT

5 Min. 

170 Miles 
SOUTH TO LOS ANGELES

PRESENTED BY

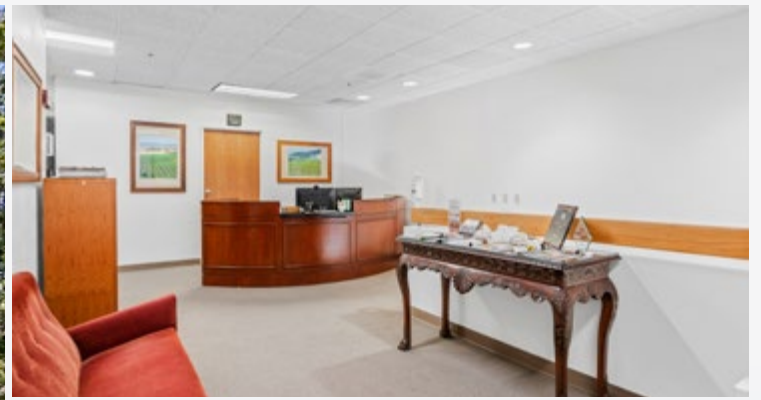
ROB HAMBLETON
805.879.9611
rhambleton@radiusgroup.com
CA LIC. 1858350

PAUL GAMBERDELLA
805.879.9622
pgamberdella@radiusgroup.com
CA LIC. 1267748

JAY PEET
805.234.4008
jpeet@radiusgroup.com
CA LIC. 1779282



© 5/12/26 Radius Group Commercial Real Estate, Inc. DRE lic. 01334755. All rights reserved. Content and/or images may not be used without permission. The information provided here has been obtained from the owner of the property or from other sources deemed reliable. We have no reason to doubt its accuracy, but we do not guarantee it.



PRESENTED BY

ROB HAMBLETON
805.879.9611
rhambleton@radiusgroup.com
CA LIC. 1858350

PAUL GAMBERDELLA
805.879.9622
pgamberdella@radiusgroup.com
CA LIC. 1267748

JAY PEET
805.234.4008
jpeet@radiusgroup.com
CA LIC. 1779282



© 5/12/26 Radius Group Commercial Real Estate, Inc. DRE lic. 01334755. All rights reserved. Content and/or images may not be used without permission. The information provided here has been obtained from the owner of the property or from other sources deemed reliable. We have no reason to doubt its accuracy, but we do not guarantee it.

RADIUSGROUP.COM



PRESENTED BY

ROB HAMBLETON
805.879.9611
rbambleton@radiusgroup.com
CA LIC. 1858350

PAUL GAMBERDELLA
805.879.9622
pgamberdella@radiusgroup.com
CA LIC. 1267748

JAY PEET
805.234.4008
jpeet@radiusgroup.com
CA LIC. 1779282





PRESENTED BY

ROB HAMBLETON
805.879.9611
rbambleton@radiusgroup.com
CA LIC. 1858350

PAUL GAMBERDELLA
805.879.9622
pgamberdella@radiusgroup.com
CA LIC. 1267748

JAY PEET
805.234.4008
jpeet@radiusgroup.com
CA LIC. 1779282

