

# 2832 Logan St. Nashville, TN



*Available Now*

**Suite G**

**10,000+ Total SF**

**Industrial Spaces Available For Lease**

\$15.00 PSF NNN + \$3.38 PSF OPEX EST.

## Contact



[www.horrellcompany.com](http://www.horrellcompany.com)



3030 Sidco Dr. Nashville, TN 37204



615-256-7114

**Ben McKnight**

615-300-7545

[bmcknight@horrellcompany.com](mailto:bmcknight@horrellcompany.com)

**Mike Russell**

615-300-7114

[mrussell@horrellcompany.com](mailto:mrussell@horrellcompany.com)



The information contained herein has been obtained from sources deemed to be reliable and we have no reason to doubt its accuracy or reliability; however, this information is provided without any guarantee, should be verified by interested parties, and is subject to change without notice or obligation. Horrell Company assumes no responsibility for the accuracy or reliability of the information herein.



## Space Highlights

**SUITE G: 10,000± TOTAL SF Available**

8,880± SF Warehouse

1,120± SF Office

(1) 10'3" X 12' Drive In Door

(1) 9'11" x 14' Drive In Door

3 Phase / 400 amp

Skylights / LED

Open Showroom

Mezzanine Storage (1,085± SF)

23' x 25' Column Spacing

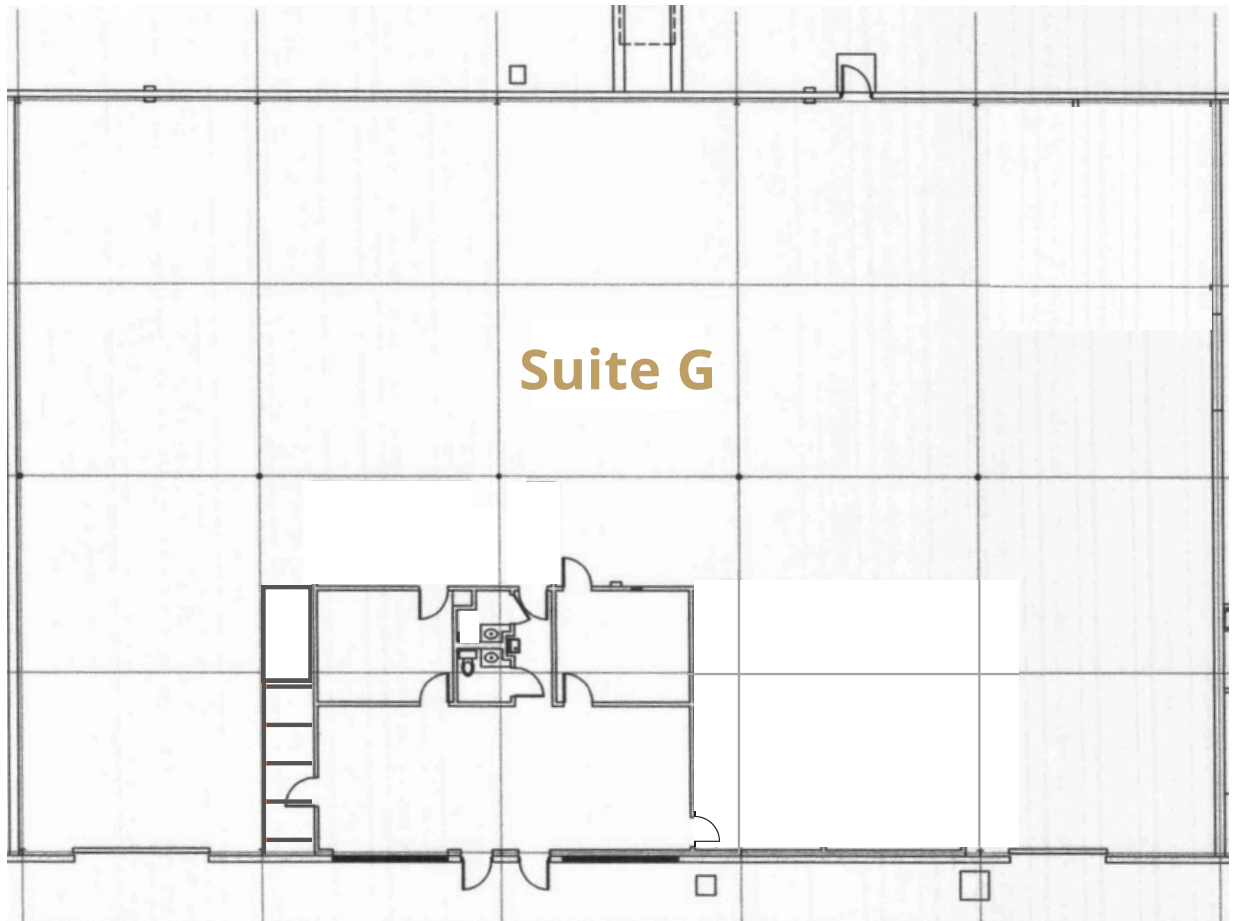
16' x 18' Clear Height

### **BASE:**

**\$15.00 PSF NNN**

### **OPERATING EXPENSES:**

**\$3.38 PSF Estimate**



# FLOOR PLAN

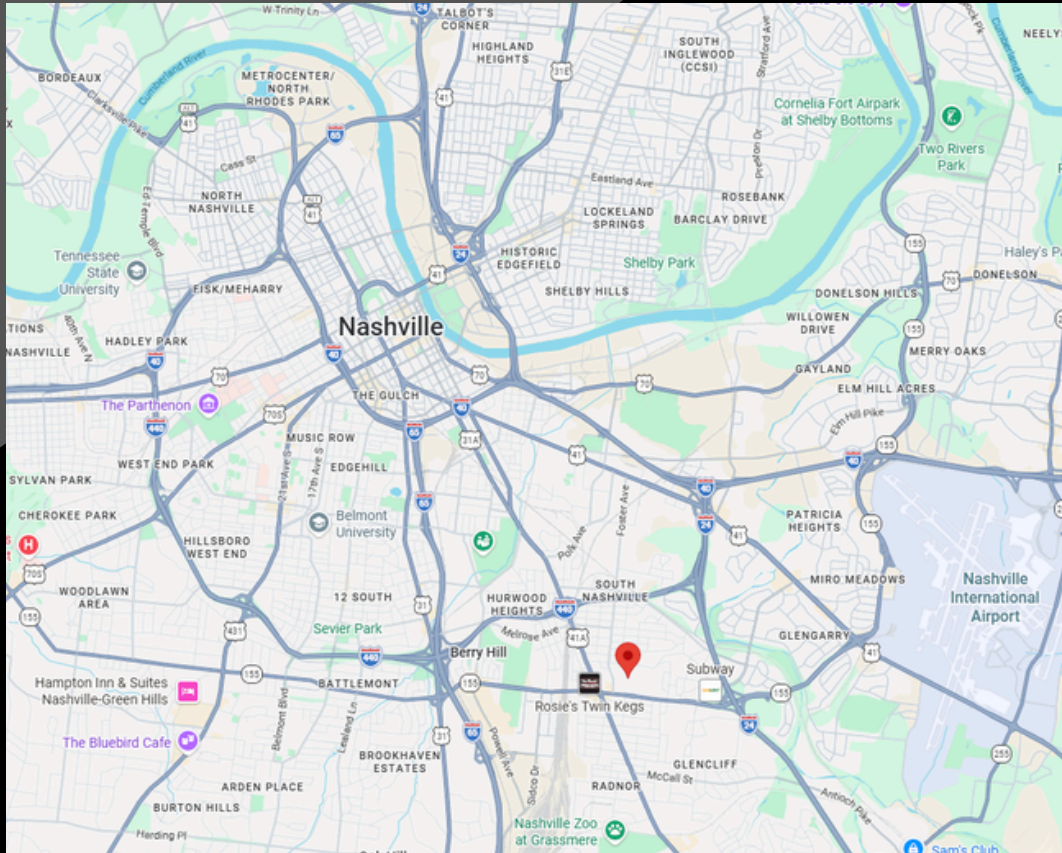




# INTERIOR PHOTOS

The information contained herein has been obtained from sources deemed to be reliable and we have no reason to doubt its accuracy or reliability; however, this information is provided without any guarantee, should be verified by interested parties, and is subject to change without notice or obligation. Horrell Company assumes no responsibility for the accuracy or reliability of the information herein.

**Property Location:**  
2832 Logan St.  
Nashville, TN 37211



Less than 5 minutes to I-440 & I-24  
Less than 10 minutes to I-65

## Contact



[www.horrellcompany.com](http://www.horrellcompany.com)



3030 Sidco Dr. Nashville, TN 37204



615-256-7114

**Ben McKnight**

615-300-7545

[bmcknight@horrellcompany.com](mailto:bmcknight@horrellcompany.com)

**Mike Russell**

615-300-7114

[mrussell@horrellcompany.com](mailto:mrussell@horrellcompany.com)

