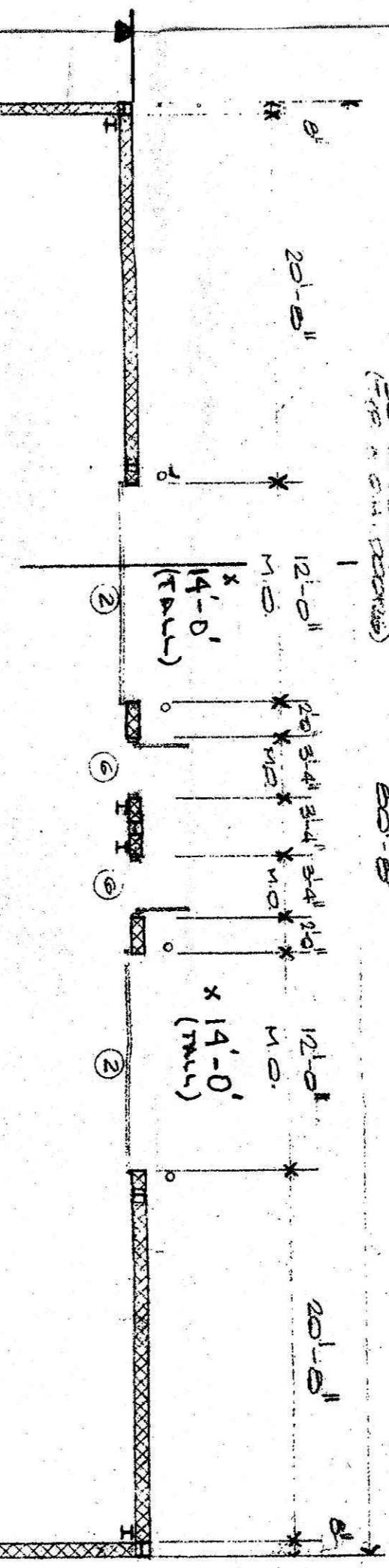


BB-1

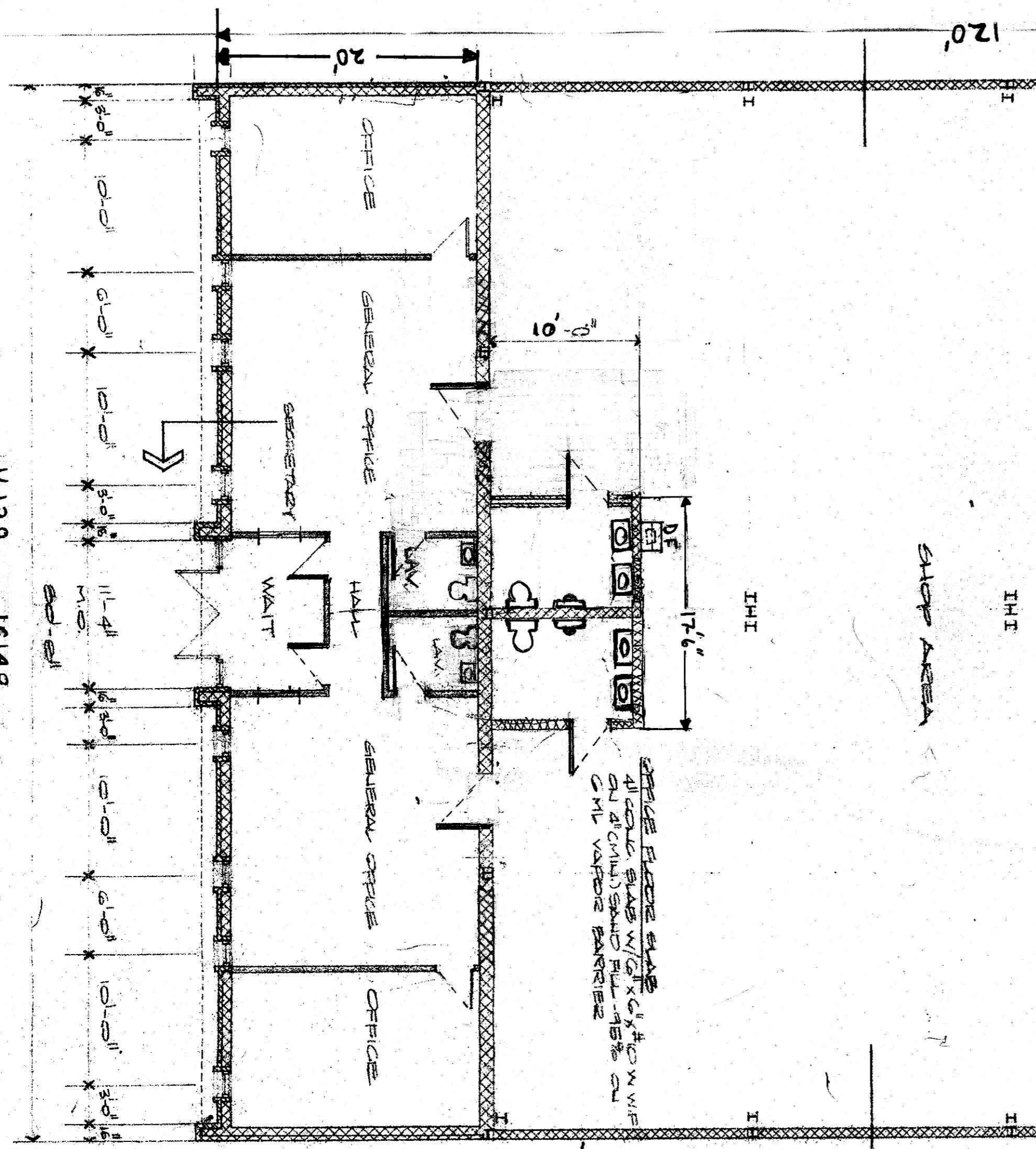
ALL THE REINFORCED W/ CONC  
 PARTS NOT SHOWN SHALL BE  
 WELDED AND REINFORCED IN 12"x12"  
 SQUARE PATTERN. REINFORCED SHALL  
 BE SET IN 2" DEPTH  
 (SEE S.C. NOTES)

- NOTES:
1. All exterior walls shall be 8" block, 8" block/4" brick or 12" block. If cores with insulation.
  2. See room finish schedule for finishes.
  3. See door schedule for openings.
  4. All openings in concrete block walls (not exceeding 6'-6" clear span) precast lintels, 8"x8" w/(2)-#4 rebars cont. top and bottom or 12"x8" rebars cont. top and bottom.
  5. Stud walls shall be 3 5/8" metal studs with 1/2" gypsum board each side.



ALL CONC SLABS W/ 5% #10 W/IF  
 ON EXISTING COMPACTED SAND  
 FILL. 75% OF G.M.L. VAPORS  
 BARRIER

OFFICE SLABS SHALL  
 ALL CONC SLABS W/ 5% #10 W/IF  
 ON EXISTING SAND FILL. 75% ON  
 G.M.L. VAPOR BARRIER



16129, 16149 COMMON RD  
 16153, 16177  
**FLOOR PLAN**  
 SCALE 1/8" = 1'-0"

