

Charter Place

OFFICE FOR LEASE

Office Rental Rate

Operating Expense

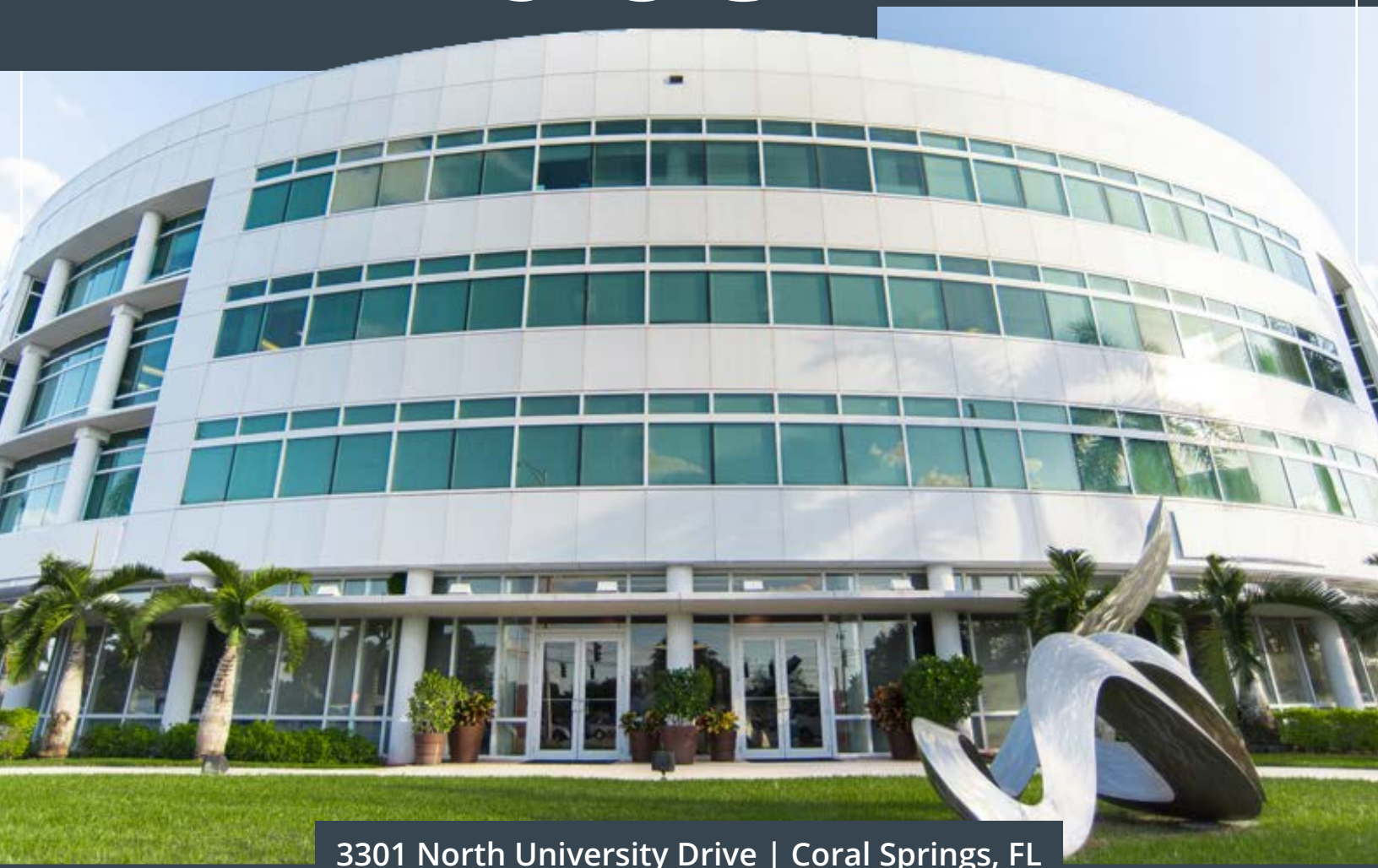
\$30.00 NNN psf \$19.59 psf

Retail Rental Rate

Operating Expense

\$30.00 NNN psf \$13.90 psf*

*Net of electric & janitorial



3301 North University Drive | Coral Springs, FL



Covered
Parking



High-Speed
Internet



Luxury
Finishes



Prime
Location



Class A
Office

And More →

Greg Martin

Principal, Managing Director

(954) 903-1815

greg.martin@avisonyoung.com

Justin Cope, SIOR

Principal

(954) 903-3701

justin.cope@avisonyoung.com

Lisa Blumer, CCIM

Principal

(954) 903-3703

lisa.blumer@avisonyoung.com

**AVISON
YOUNG**

© 2026. Avison Young. Information contained herein was obtained from sources deemed reliable and, while thought to be correct, have not been verified. Avison Young does not guarantee the accuracy or completeness of the information presented, nor assumes any responsibility or liability for any errors or omissions therein. Some imagery may have been edited using AI tools for visualization purposes.

Premium Amenities for Your Workspace



Premier Office Space:
Four-story, 80,489-square-foot, Class A office building



High-End Finishes:
Elegant lobby, restrooms, & common areas



Prime Location:
Fronts University Drive & Sample Road



Convenience:
Onsite banking



Nearby Attractions:
Close to top restaurants & shopping in Coral Springs



Connectivity:
AT&T and FBL Fiber available



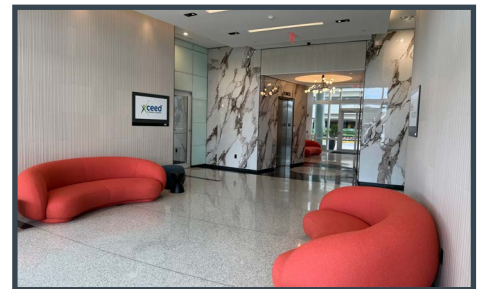
Safety Features:
Hurricane-resistant windows



Easily Accessible:
Close to Sawgrass Expressway and Turnpike



Parking:
Free covered parking



Greg Martin

Principal, Managing Director

(954) 903-1815

greg.martin@avisonyoung.com

Justin Cope, SIOR

Principal

(954) 903-3701

justin.cope@avisonyoung.com

Lisa Blumer, CCIM

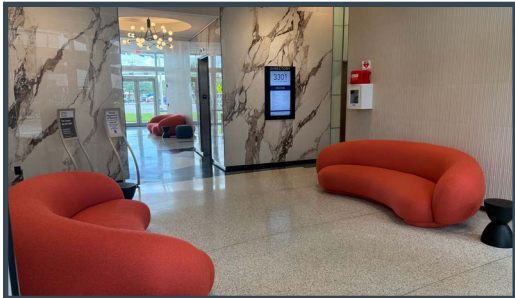
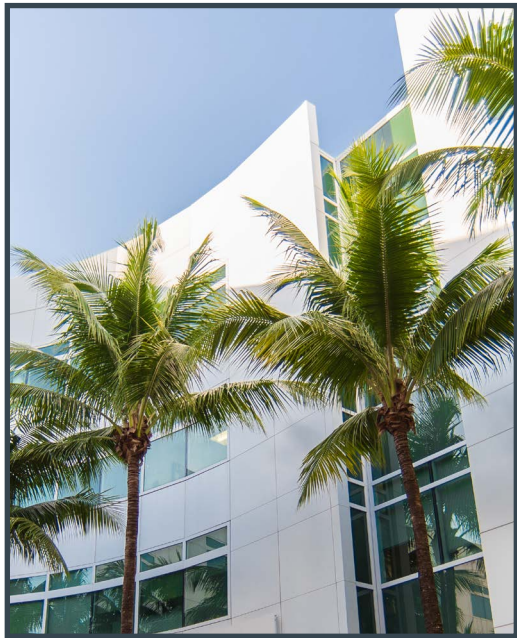
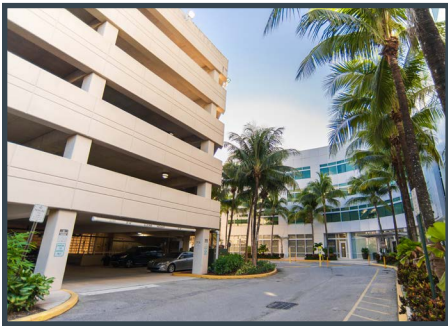
Principal

(954) 903-3703

lisa.blumer@avisonyoung.com

**AVISON
YOUNG**

Gallery



Greg Martin

Principal, Managing Director
(954) 903-1815
greg.martin@avisonyoung.com

Justin Cope, SIOR

Principal
(954) 903-3701
justin.cope@avisonyoung.com

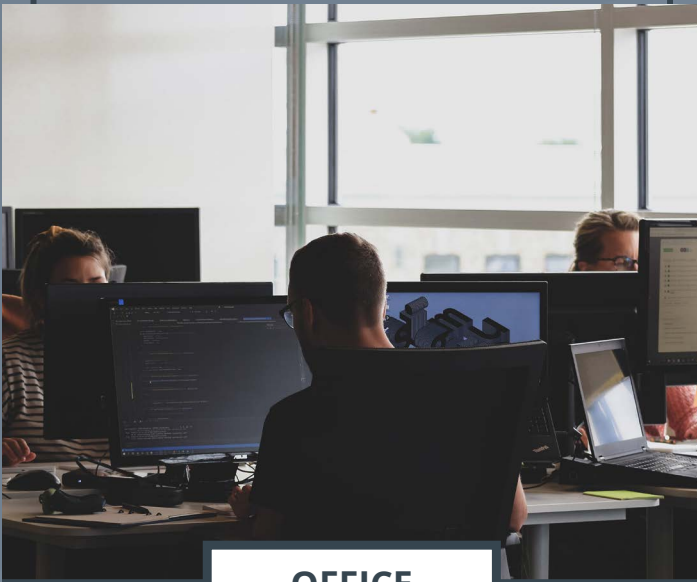
Lisa Blumer, CCIM

Principal
(954) 903-3703
lisa.blumer@avisonyoung.com



© 2026. Avison Young. Information contained herein was obtained from sources deemed reliable and, while thought to be correct, have not been verified. Avison Young does not guarantee the accuracy or completeness of the information presented, nor assumes any responsibility or liability for any errors or omissions therein. Some imagery may have been edited using AI tools for visualization purposes.

Availability



OFFICE

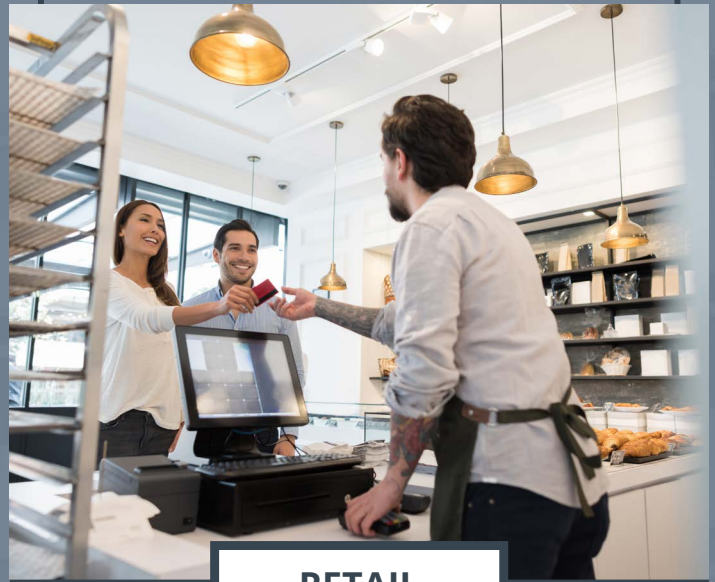
Suite 412
2,523 sf

Suite 415
2,249 sf

First generation space

Suite 450
5,050 sf

First generation space



RETAIL

Suite 3320
2,243 sf

First generation space

Greg Martin

Principal, Managing Director

(954) 903-1815

greg.martin@avisonyoung.com

Justin Cope, SIOR

Principal

(954) 903-3701

justin.cope@avisonyoung.com

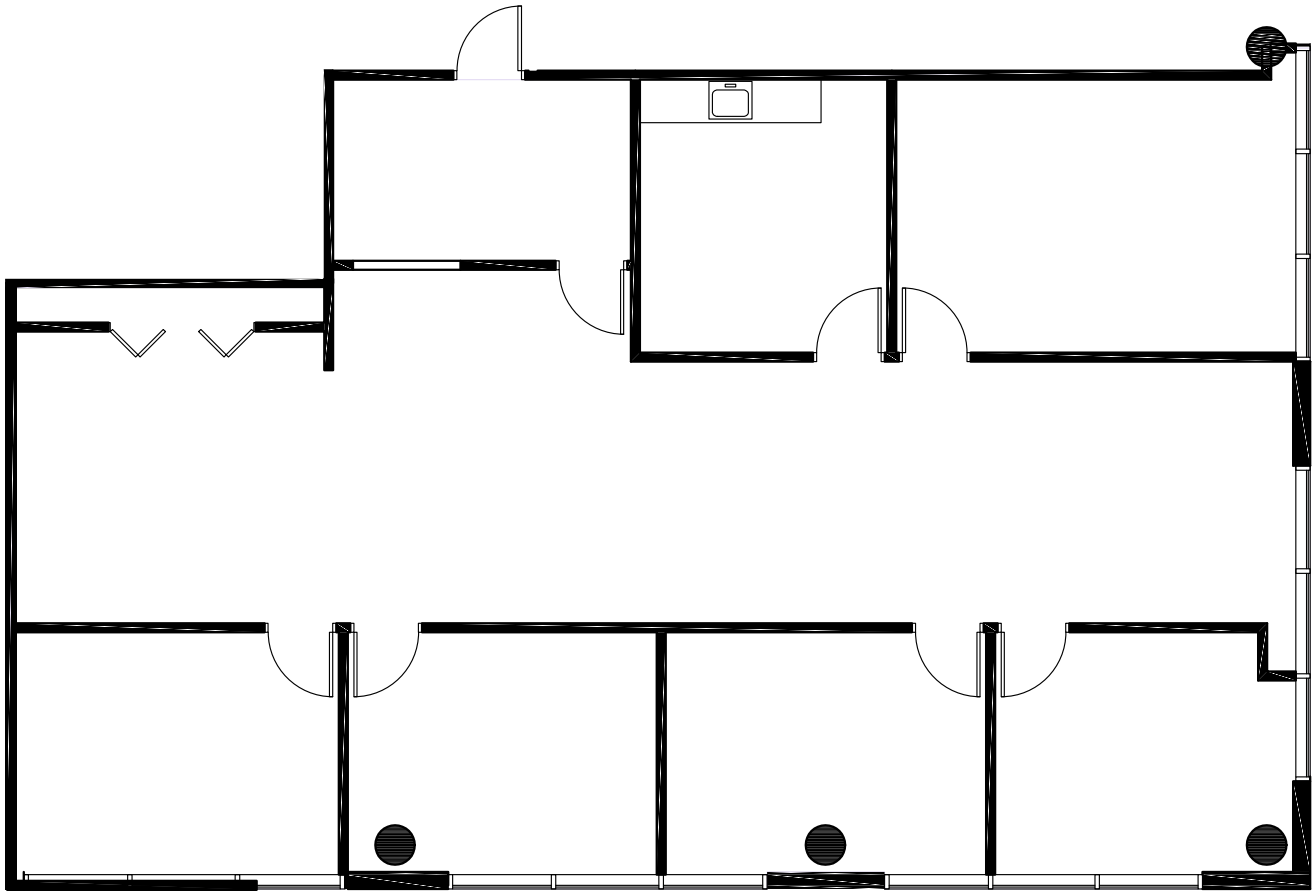
Lisa Blumer, CCIM

Principal

(954) 903-3703

lisa.blumer@avisonyoung.com

**AVISON
YOUNG**



Suite 412

2,523 sf

OFFICE

Greg Martin

Principal, Managing Director

(954) 903-1815

greg.martin@avisonyoung.com

Justin Cope, SIOR

Principal

(954) 903-3701

justin.cope@avisonyoung.com

Lisa Blumer, CCIM

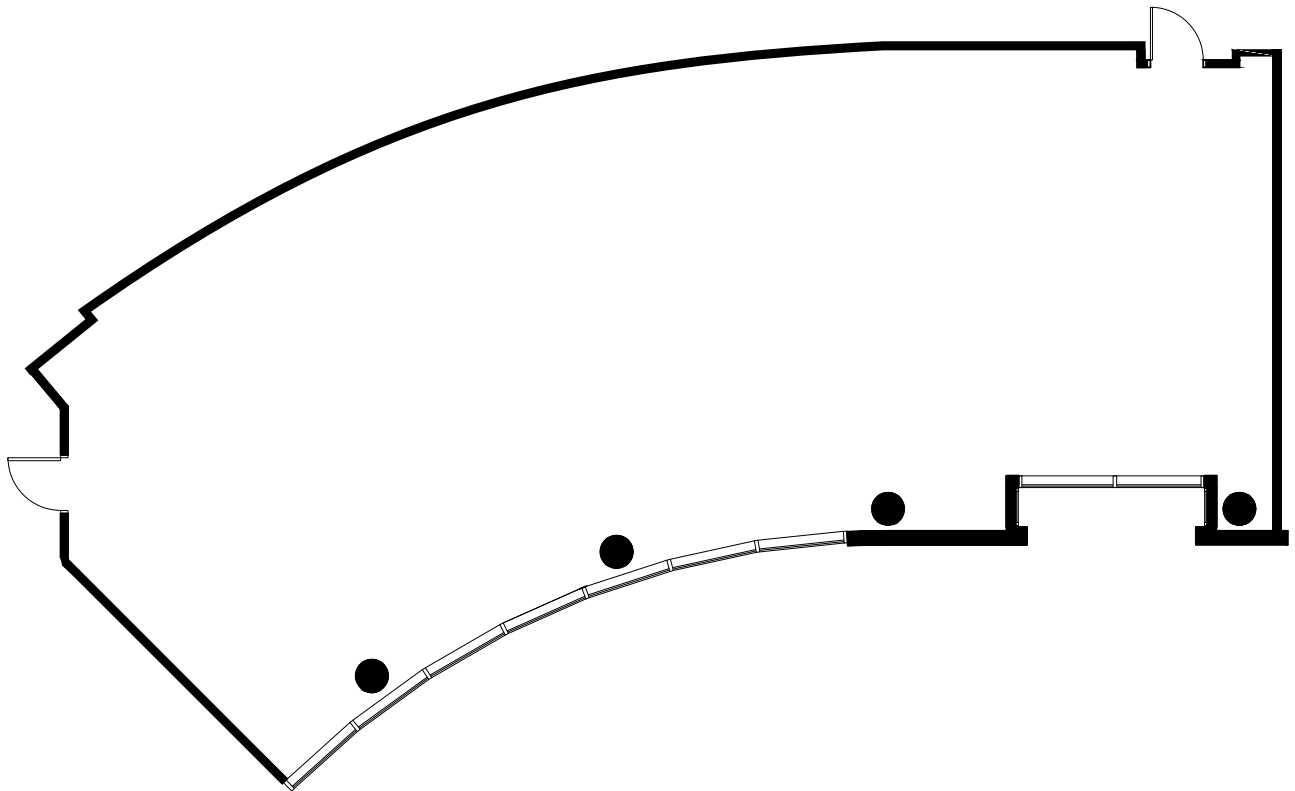
Principal

(954) 903-3703

lisa.blumer@avisonyoung.com

**AVISON
YOUNG**

First generation space



Suite 415

2,249 sf

OFFICE

Greg Martin

Principal, Managing Director

(954) 903-1815

greg.martin@avisonyoung.com

Justin Cope, SIOR

Principal

(954) 903-3701

justin.cope@avisonyoung.com

Lisa Blumer, CCIM

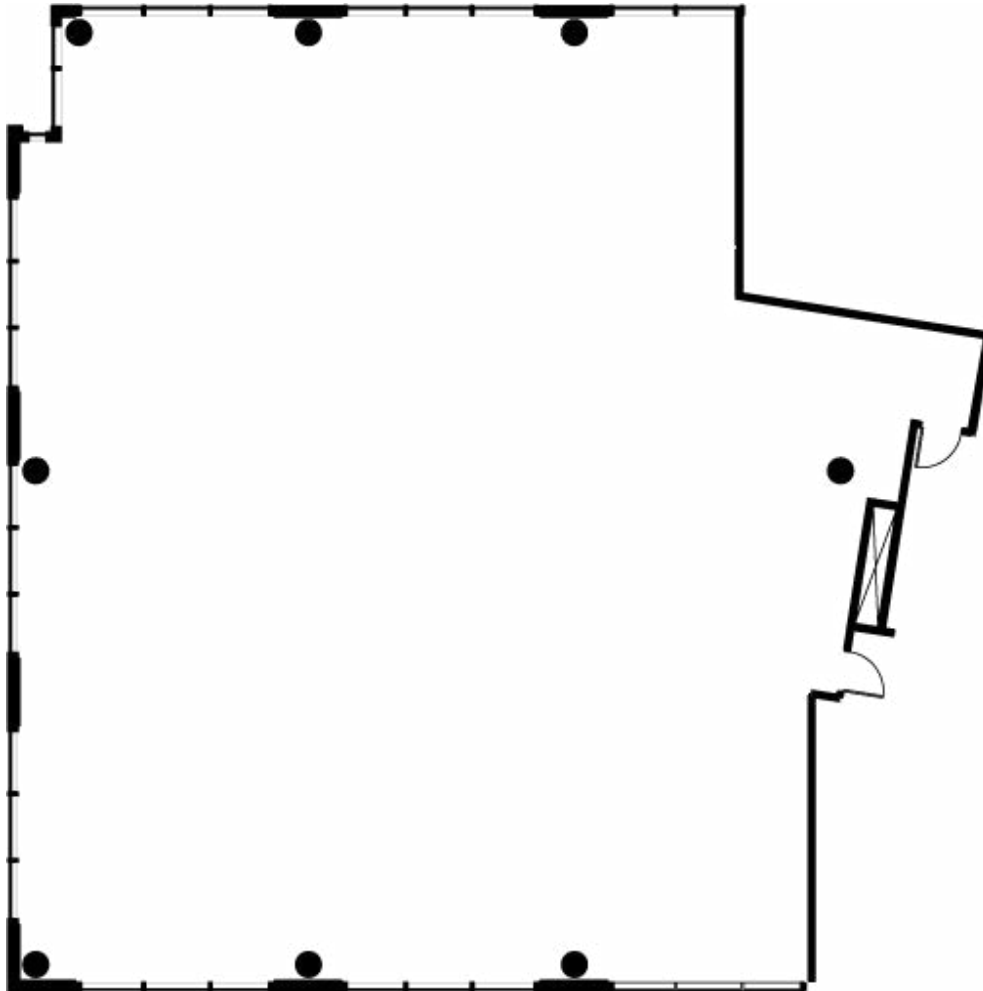
Principal

(954) 903-3703

lisa.blumer@avisonyoung.com

**AVISON
YOUNG**

First generation space



Suite 450

5,050 sf

OFFICE

Greg Martin

(954) 903-1815

greg.martin@avisonyoung.com

Justin Cope, SIOR

(954) 903-3701

justin.cope@avisonyoung.com

Lisa Blumer, CCIM

(954) 903-3703

lisa.blumer@avisonyoung.com

First generation space



Suite 3320

2,243 sf

RETAIL

Greg Martin

Principal, Managing Director

(954) 903-1815

greg.martin@avisonyoung.com

Justin Cope, SIOR

Principal

(954) 903-3701

justin.cope@avisonyoung.com

Lisa Blumer, CCIM

Principal

(954) 903-3703

lisa.blumer@avisonyoung.com

**AVISON
YOUNG**

Property Location

869

441



Coral Springs The Melting Pot FONDUE RESTAURANT

Bank of America



Charter Place

Strategically Located for Convenience and Lifestyle

Financial

- Bank of America
- Wells Fargo
- Chase
- Citi

Restaurants

- Starbucks
- Tap 42
- The Melting Pot
- Miller's Ale House

Misc.

- The Fresh Market
- Publix
- Trader Joe's
- LA Fitness

Greg Martin
Principal, Managing Director
(954) 903-1815
greg.martin@avisonyoung.com

Justin Cope, SIOR
Principal
(954) 903-3701
justin.cope@avisonyoung.com

Lisa Blumer, CCIM
Principal
(954) 903-3703
lisa.blumer@avisonyoung.com

