

1000 WOODBURY

1000 WOODBURY ROAD, NEW YORK, NY, 11797



NEW OWNERSHIP \ NEW VISION \ NEW SPACES

SUITE 401

AVAILABLE SPACE

Newly constructed, pre-built office space totaling 3,124 RSF, thoughtfully designed with modern finishes and a highly efficient layout.



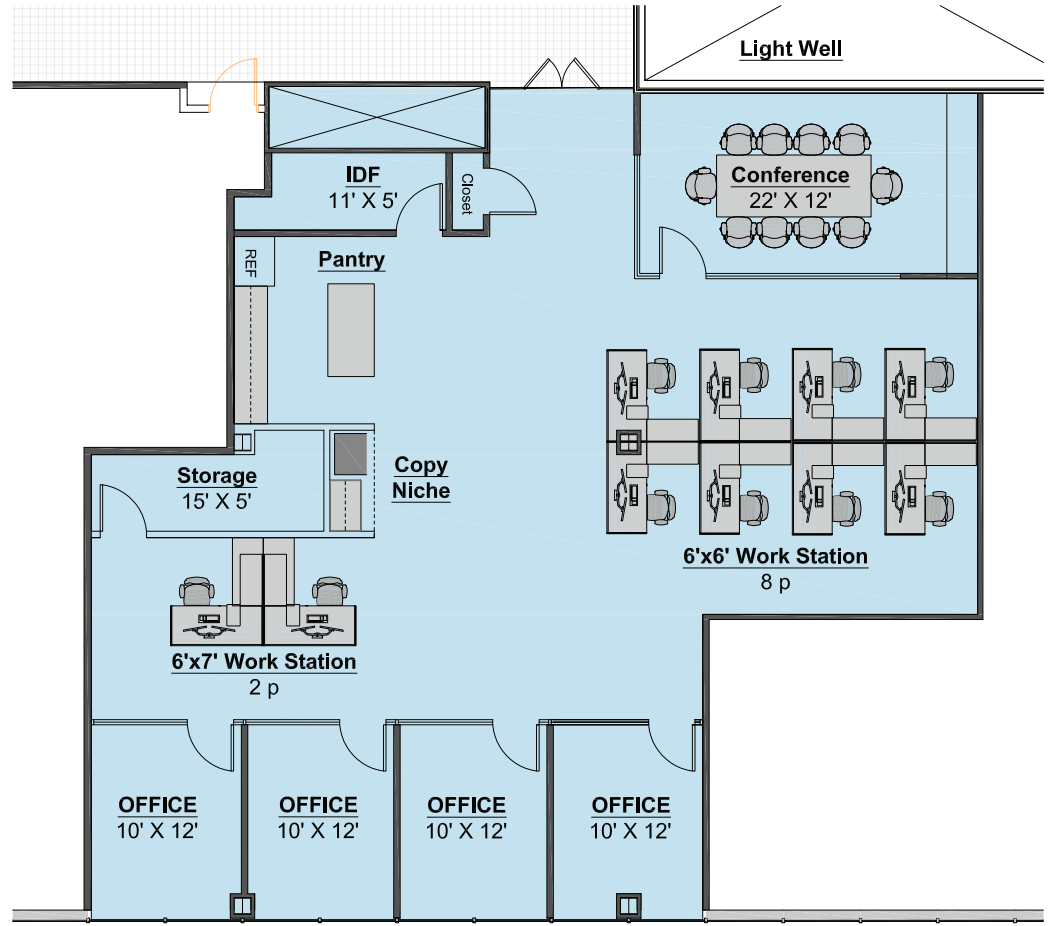
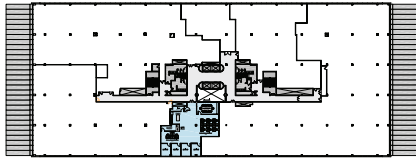
BUILDING OVERVIEW

- Gross Building Area 283,760 SF
- Four (4) floors with one lower level below-grade
- Conference room with flexible setups for \pm 100, 50, or 35 guests, featuring a fully equipped A/V technology suite
- Nearest LIRR Station – Syosset 1.9 miles
- 4 passenger + 1 freight elevator
- Dedicated telecom infrastructure throughout

BUILDING AMENITIES

- Full Service Café
- Conferencing Center
- Fitness Center
- Training Room (newly renovated)
- Building Upgrades Underway

Floor Plan \ \ Suite 401



OWNERSHIP

TKF Burnside
REAL ESTATE PARTNERS

NEWMARK

FOR LEASING CONTACT

Brian Lee

Principal/ Executive Managing Director

t 516-487-7770

brian.lee@nrmk.com

MANAGING AGENT

Robert Swetland (On-site)

t 631-316-1423

The information contained herein has been obtained from sources deemed reliable but has not been verified and no guarantee, warranty or representation, either express or implied, is made with respect to such information. Terms of sale or lease and availability are subject to change or withdrawal without notice.

©2026 Newmark. All Rights Reserved.

Scan to
Download
Brochure

