

# *The* **COMMONS** *at Concord Park*

300 E. Sonterra Blvd. | San Antonio, Texas 78258



*Move-In Ready  
Suites Available*

*Class A  
Project*

*Noteworthy  
Sonterra Address*

Leased By



# The COMMONS at Concord Park

300 E. Sonterra Blvd. | San Antonio, Texas 78258

## Property Site Plan



## Building Overview

The Commons at Concord Park consists of 108,116 square feet spread out between four Class A buildings.

The property is conveniently located on E. Sonterra Boulevard, just northwest of the Loop 1604 / Highway 281 interchange with multiple access points of ingress/egress.

Nestled in Stone Oak, one of San Antonio's fastest growing and most affluent areas, the property is just minutes from nearby hotels, retail, entertainment and numerous dining establishments.

Bldg I	43,916 rentable square feet (Two Floors)
Bldg II	27,000 rentable square feet
Bldg III	25,200 rentable square feet
Bldg IV	6,165 rentable square feet

Year Built	2001-2004
Parking Ratio	4.4/1,000

## Key Features



Executive Covered  
Parking



Walkable  
Dining Options



Nearby Fitness  
Facilities



Hotel  
Accommodations



## Sample Finishes

### Lease Rate

\$20.00/RSF/YR + NNNs

### Availabilities

Bldg I: Suite 1260 - 4,730 RSF

Suite 1270 - 1,254 RSF

\*Suites 1260/1270 contiguous for 5,984 RSF

Bldg II: Suite 240 - 7,508 RSF

Bldg III: Suite 350 - 9,790 RSF



## Property Feature List

- Executive covered parking
- Double steel glass doors
- Staircase with glass railing
- Modern tenant directory
- Finline lighting
- Clear height: 10'
- Four concrete buildings featuring limestone accents
- 2'x2' acoustic ceiling tile
- Solid core cherry veneer doors and 2'x4' parabolic lighting

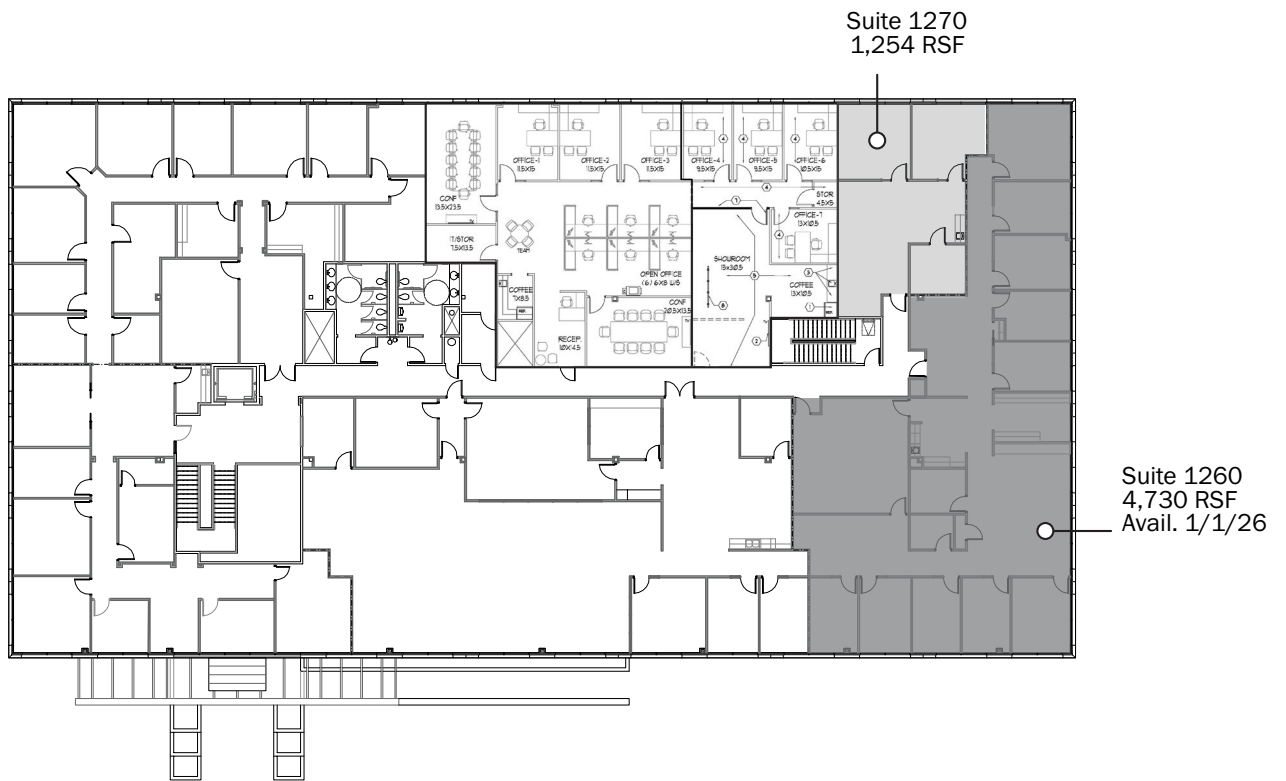


## Location



Download  
Floorplate

## Building I LEVEL 2

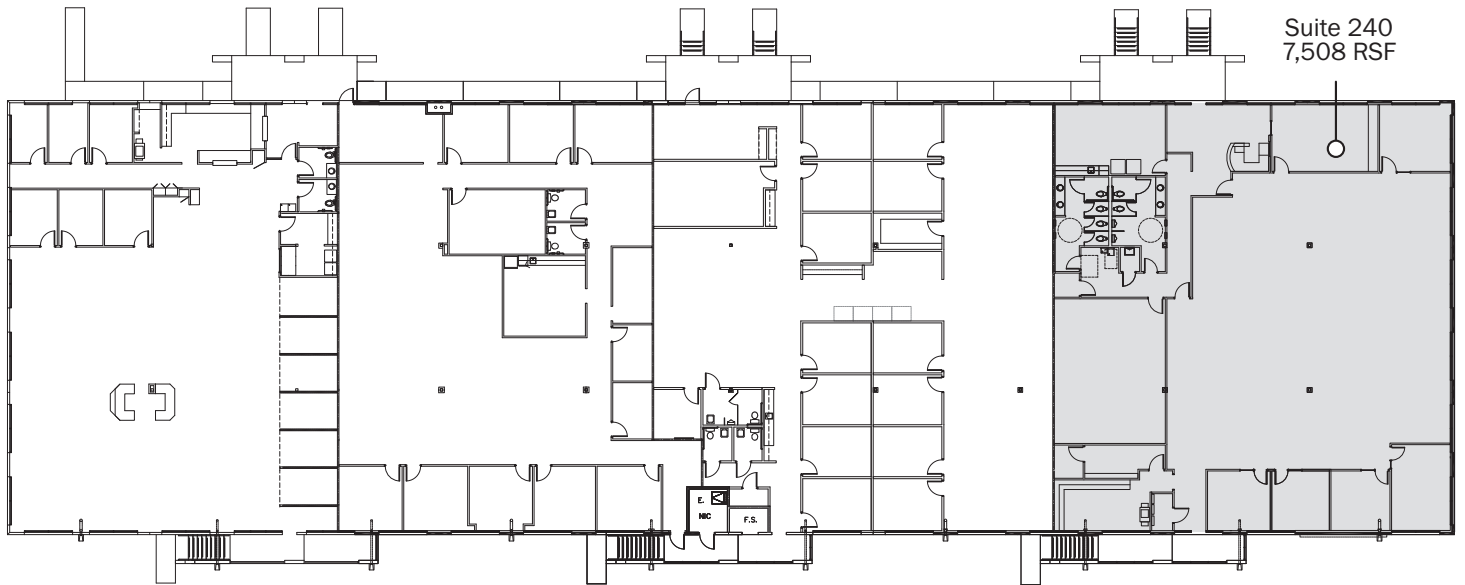


*\*Suites 1260/1270 contiguous for 5,984 RSF*



Download  
Floorplate

## *Building II* LEVEL 1

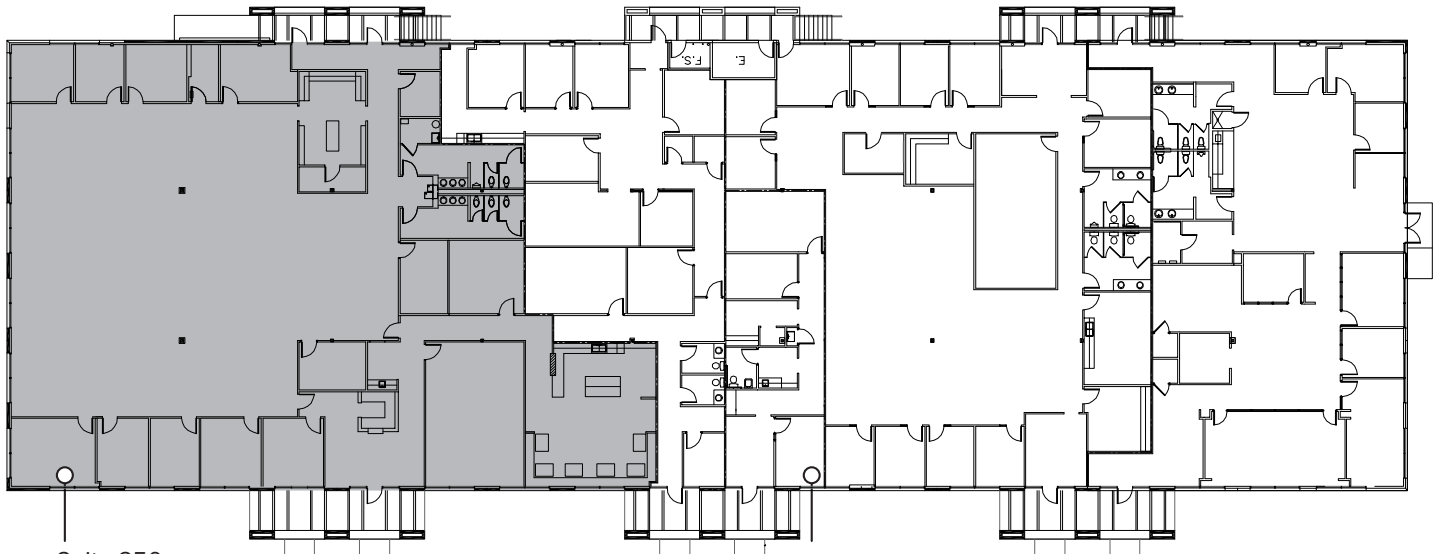




Download  
Floorplate

# *Building III*

## LEVEL 1



Suite 350  
9,790 RSF





*The*  
**COMMONS**  
*at Concord Park*

300 E. Sonterra Blvd. | San Antonio, Texas 78258



*For Leasing Information, Contact:*

Scott Ferguson | Senior Vice President  
[scott.ferguson@streamrealty.com](mailto:scott.ferguson@streamrealty.com)  
210.298.8531

Garrett Carlson | Vice President  
[garrett.carlson@streamrealty.com](mailto:garrett.carlson@streamrealty.com)  
210.298.8515

A Property Of

