



**1 Acre Out Parcel**

Out-Parcel Restaurant

**1102 New Pointe Blvd**

For Lease | Leland, NC



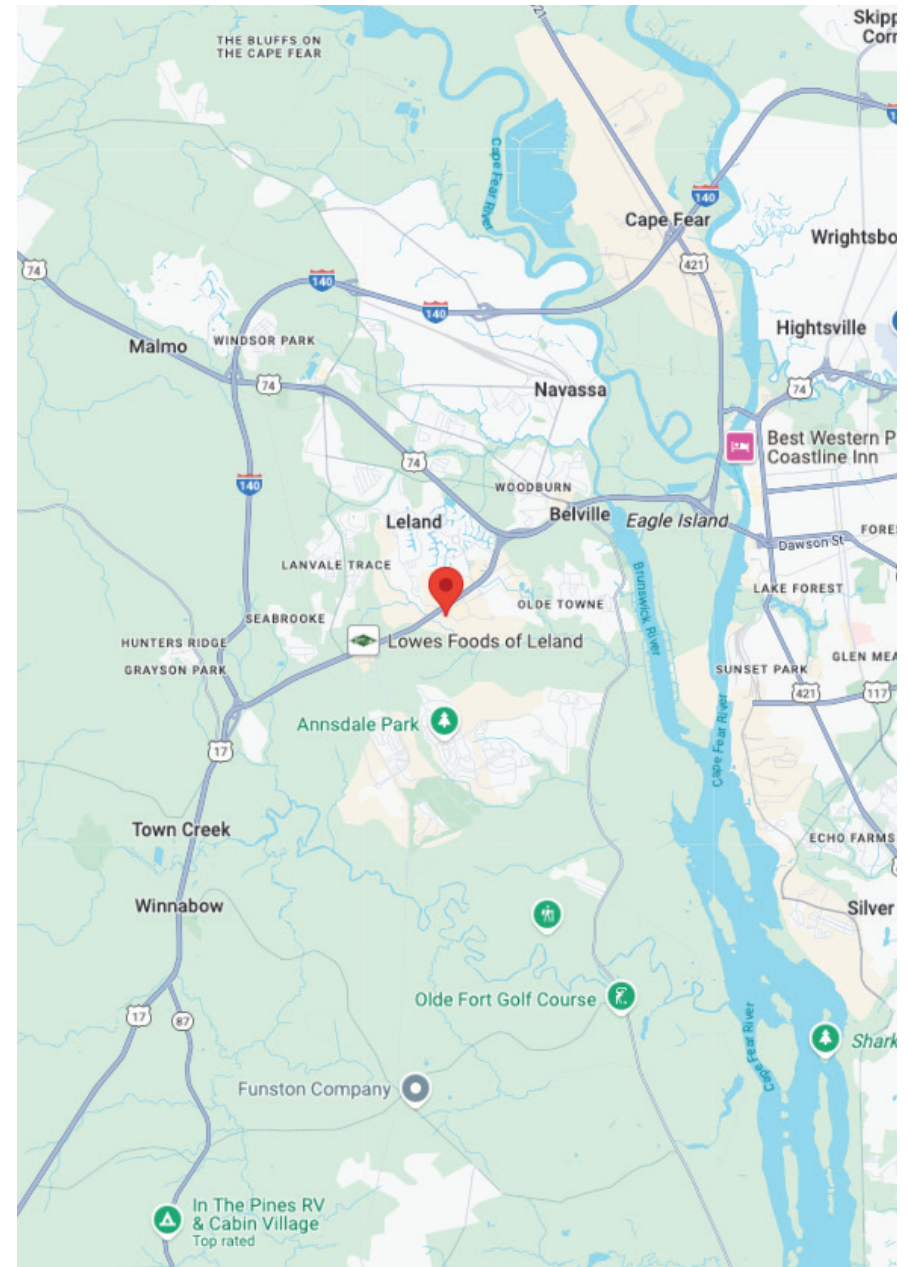
# Overview

<b>Status:</b>	For Lease
<b>Property Type:</b>	Land
<b>Size:</b>	1 Acre
<b>Zoning:</b>	C-2
<b>County:</b>	Brunswick
<b>Asking Rate:</b>	\$8,333 Monthly

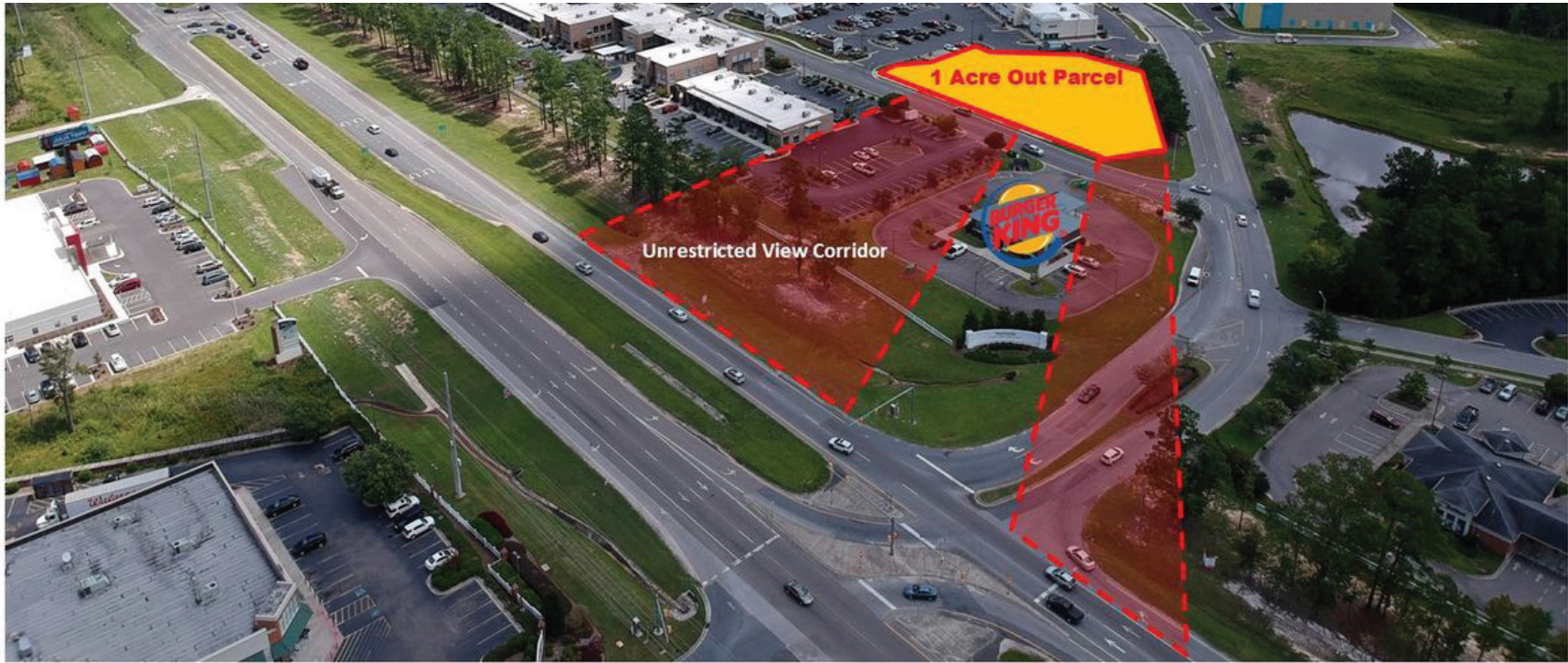
1-acre out-parcel available for ground lease, suitable and approved for 3,200 SF restaurant use with or without a drive-thru. Other retail/commercial/office uses are larger building sizes possible with variance.

Includes off-site stormwater retention and 2 stormwater drains on the property and all other utilities.

Agent has ownership interest in property.



# Property Information



**Asking Rate:** \$8,333 Monthly

**Listing ID:** 40777569

**Property Type:** Land

**Status:** For Lease

**Secondary Uses:** Retail

**Total Available Space:** 1 Acre

**Min Div/Max Contig:** 1 Acre

**Lease Type:** NNN

**Available Date:** Now

**Parking Spaces:** 40

**Zoning:** C-2

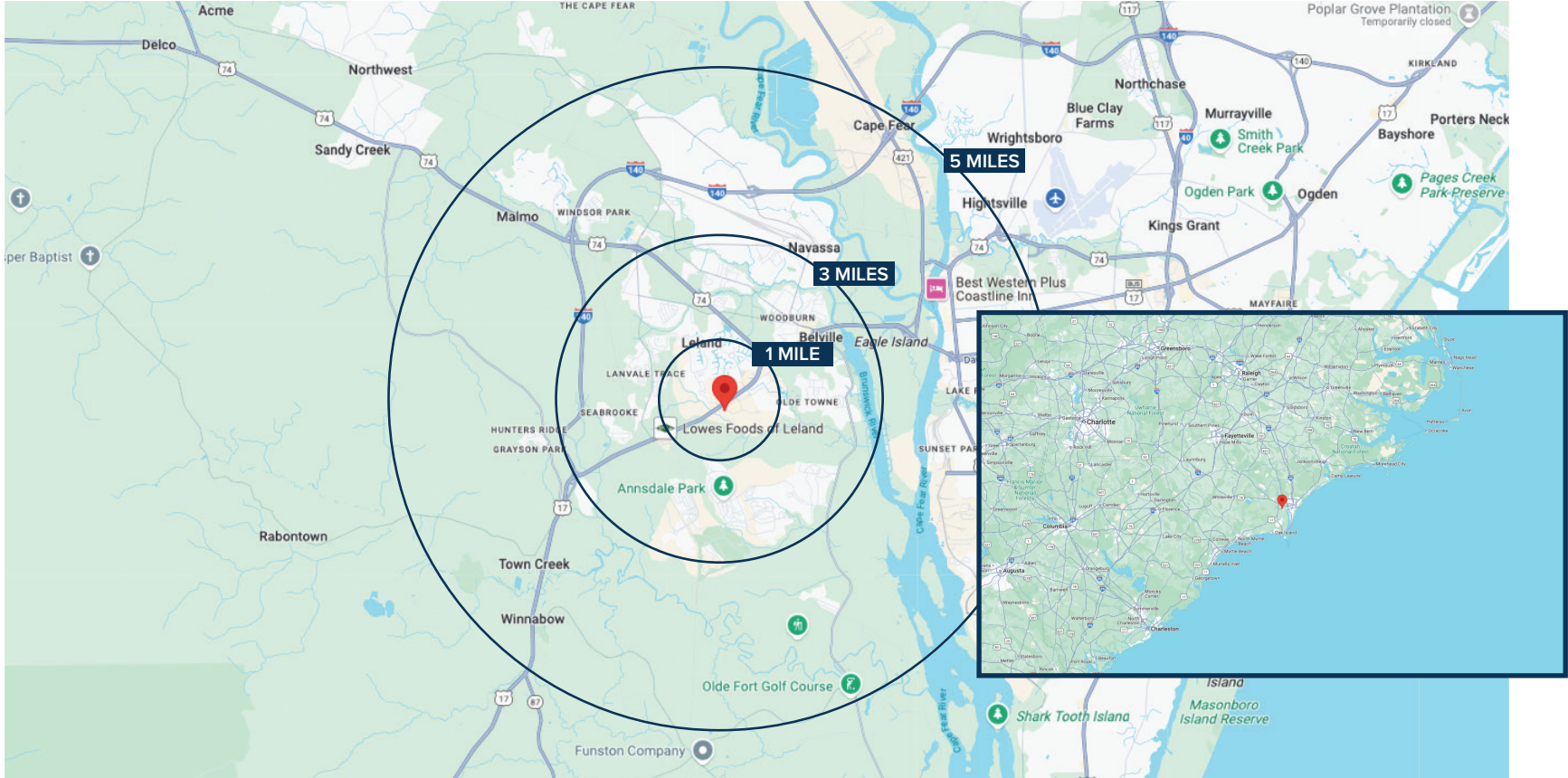
**County:** Brunswick

**Parcels:** 047FC008

**Building Status:** Proposed

# Demographics

	POPULATION	HOUSEHOLDS	AVG. HH INCOME	EMPLOYMENT
<b>1 MILE</b>	3,530	6,600	\$76K	1,605
<b>3 MILES</b>	16,870	12,037	\$68K	7,500
<b>5 MILES</b>	26,272	17,395	\$60K	11,588



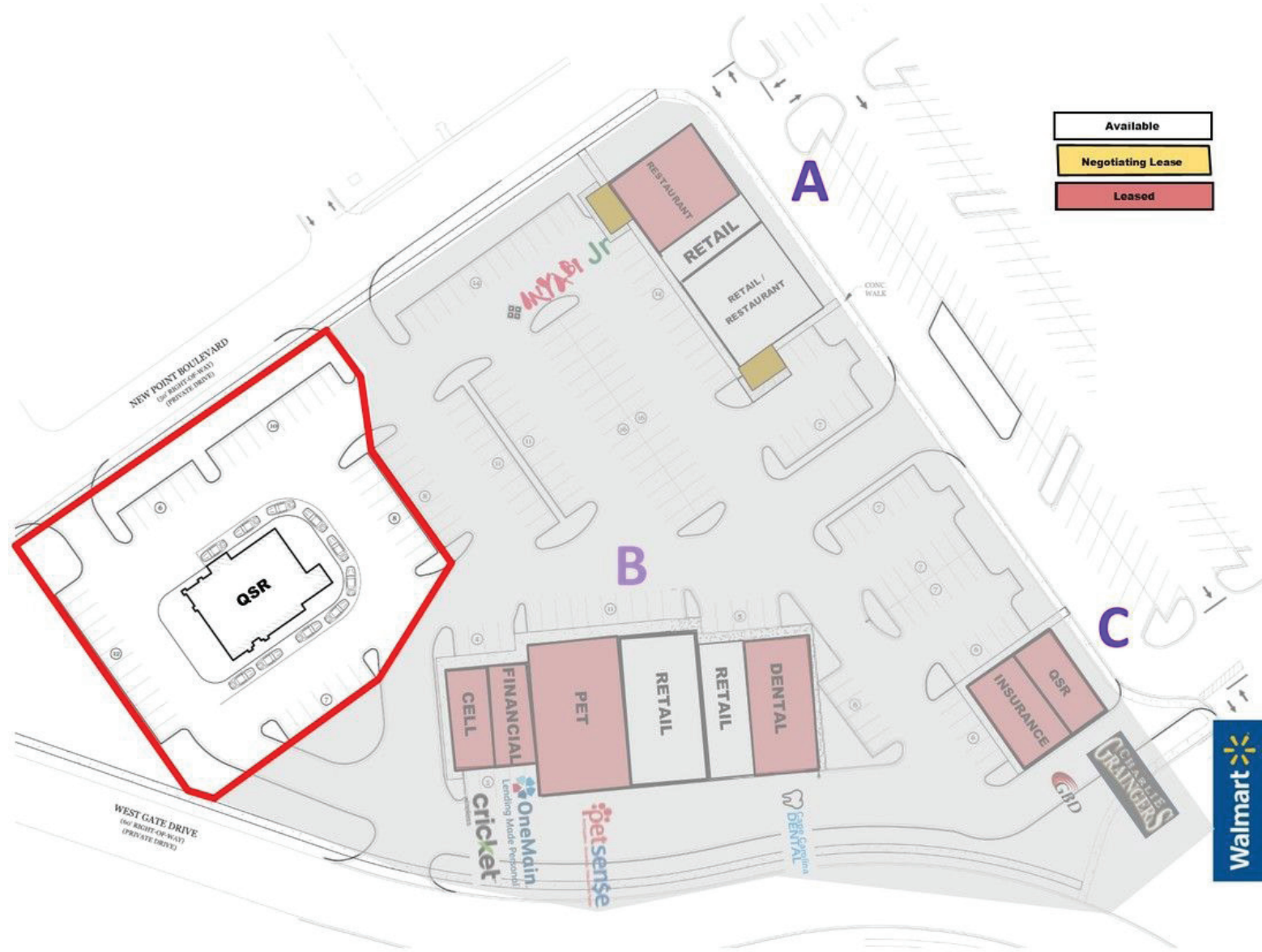
# Submarket Overview



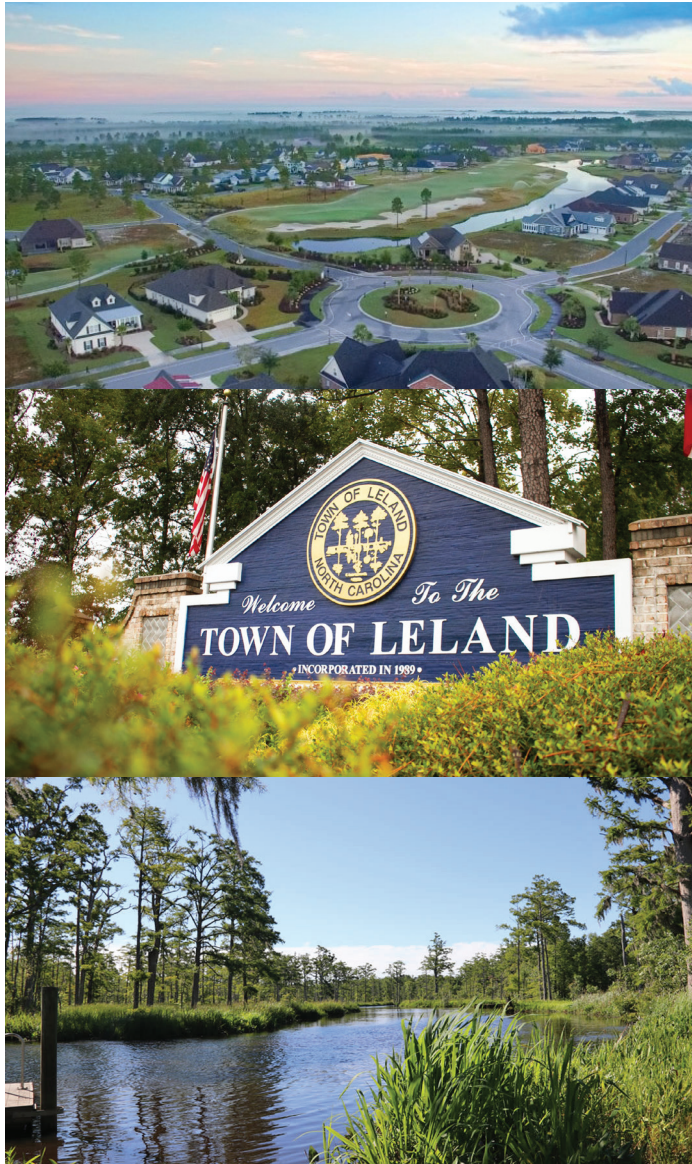
# Aerial



# Site Plans



## Local Information



### Leland, NC

Leland, North Carolina, is a fast-growing town in Brunswick County, located just across the Cape Fear River from downtown Wilmington. Its convenient location makes it an attractive spot for those who want suburban comfort with easy access to the city's amenities, beaches, and historic charm. Leland has seen steady development in recent years, with new neighborhoods, parks, and local businesses contributing to a strong sense of community. The area is known for its scenic views, especially along the Brunswick River, and its proximity to golf courses, nature trails, and the Brunswick Forest development. With a mix of natural beauty and modern growth, Leland offers a well-rounded lifestyle that appeals to a wide range of residents.

# Contact Info

## Office

2524 Independence Blvd.  
Wilmington NC 28412

910-791-0400

[www.mwmrealestate.com](http://www.mwmrealestate.com)

## Listing Agent

Jack Kilbourne

910-262-4407

[jack@mwmrealestate.com](mailto:jack@mwmrealestate.com)



All information furnished is from sources deemed reliable, but no warranty or representation is made as to the accuracy thereof and same is submitted subject to errors omissions, change of price, rental or other conditions, without notice. No liability of any kind is to imposed on the broker herein.