



Industrial Space for Lease

EXECUTIVE PARK BUILDING E
6101-6121 E CONNECTICUT AVE, KANSAS CITY, MISSOURI

Property Highlights

- 6,312 (±) sf suite with 4,612 (±) sf office
- 3 dock-high doors
- 16' minimum ceiling height
- Well maintained building in business park setting
- Centralized location within Kansas City metro
- Excellent access to I-35, I-29, I-435 and 210 Hwy
- 4% cooperating brokerage fee
- Lease rate \$7.00/sf, NNN

For information, please contact:

Mark C. Long, CRE, SIOR, CCIM, LEED AP
President and Chief Executive Officer
t 816-512-1011
mlong@nzimmer.com

John F. Hassler, SIOR
Executive Managing Director
t 816-268-4208
jhassler@nzimmer.com

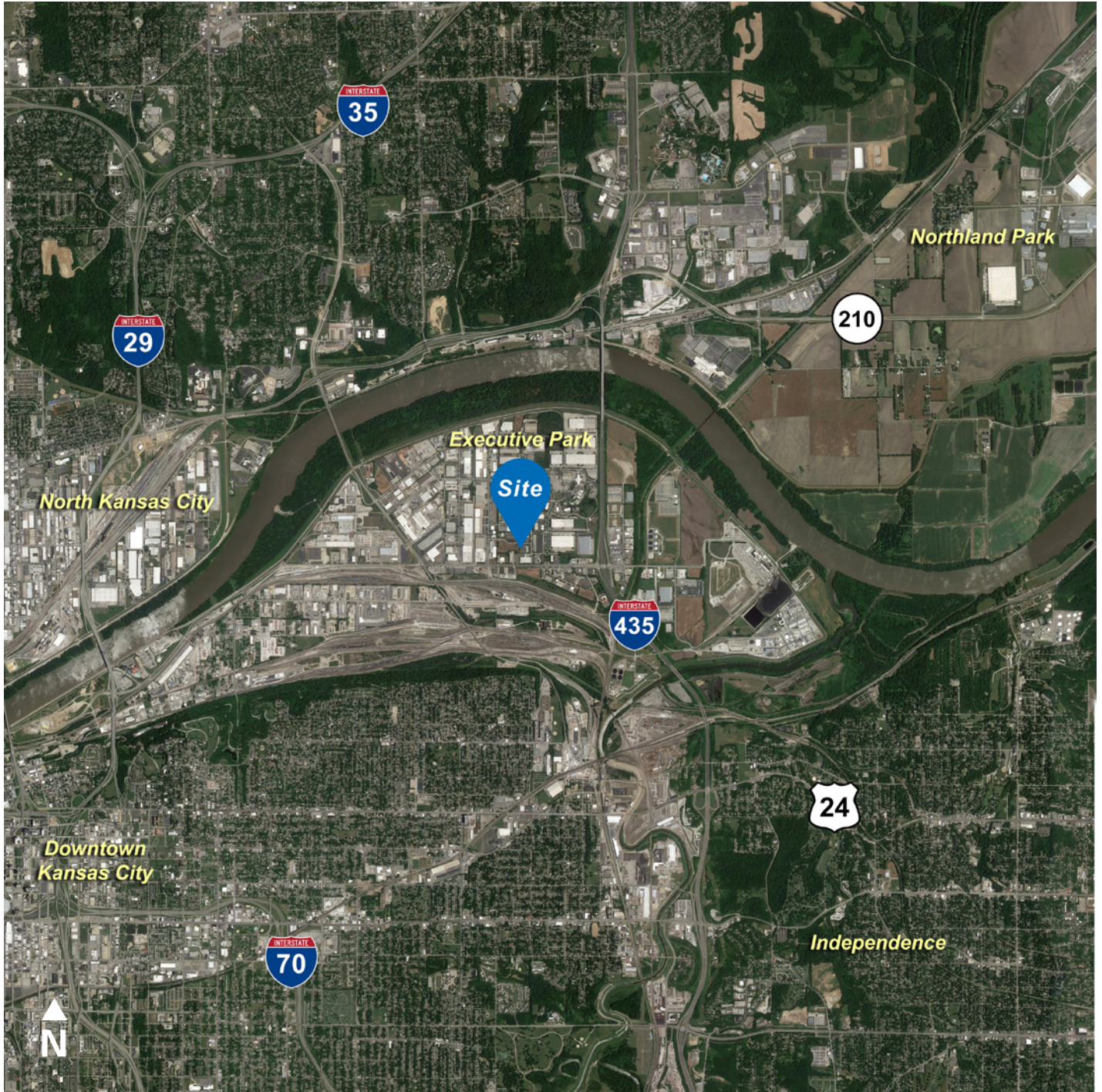
1220 Washington Street, Suite 300
Kansas City, MO 64105

nrmkzimmer.com



NEWMARK
ZIMMER

The information contained herein has been obtained from sources deemed reliable but has not been verified and no guarantee, warranty or representation, either express or implied, is made with respect to such information. Terms of sale or lease and availability are subject to change or withdrawal without notice.

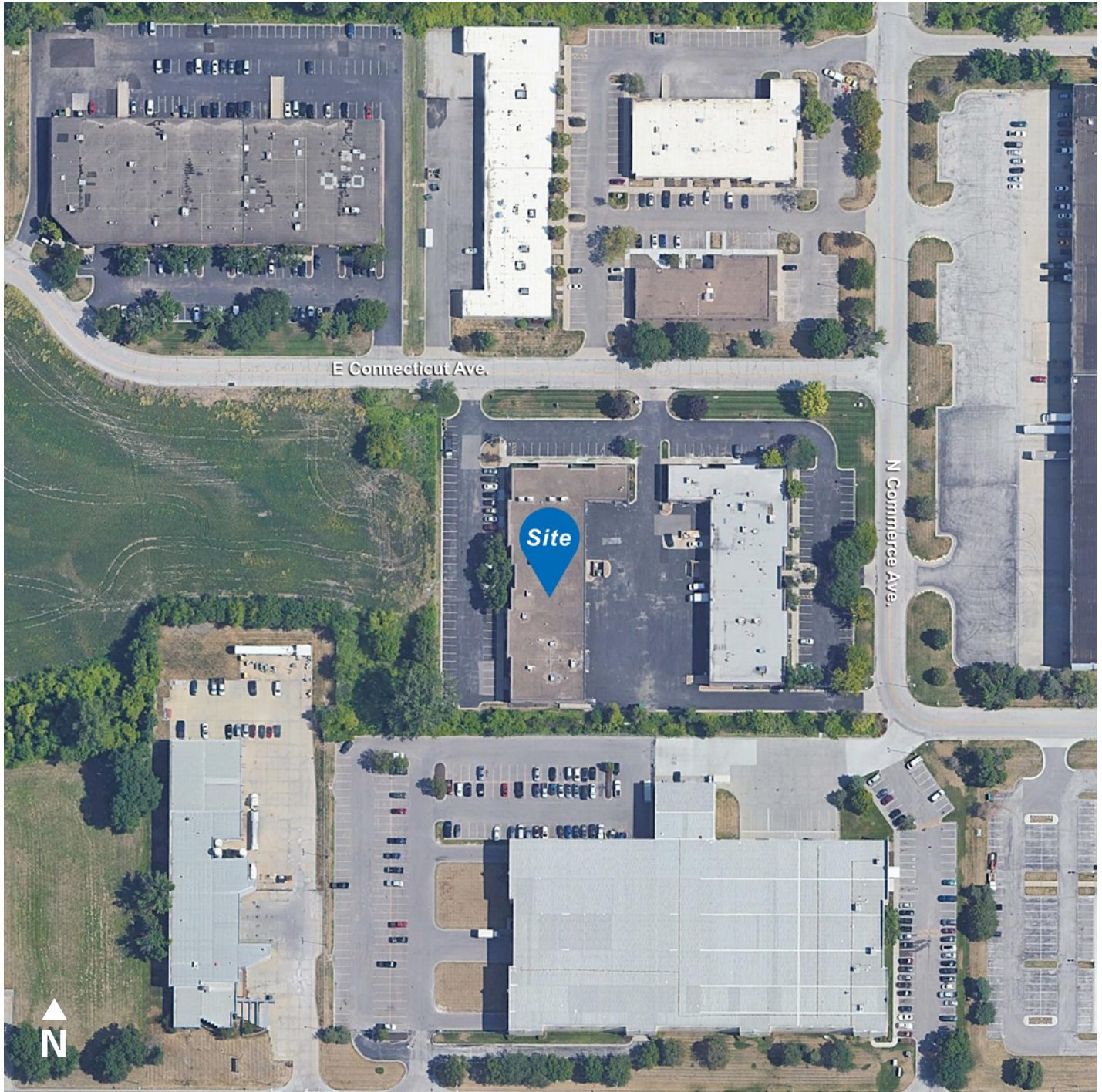


CONTACT

Mark C. Long, CRE, SIOR, CCIM, LEED AP
President and Chief Executive Officer
t 816-512-1011
mlong@nzimmer.com
nmrkzimmer.com

John F. Hassler, SIOR
Executive Managing Director
t 816-268-4208
jhassler@nzimmer.com

6101-6121 E CONNECTICUT AVE, KANSAS CITY, MISSOURI



CONTACT

Mark C. Long, CRE, SIOR, CCIM, LEED AP

President and Chief Executive Officer

t 816-512-1011

mlong@nzimmer.com

nmrkzimmer.com

John F. Hassler, SIOR

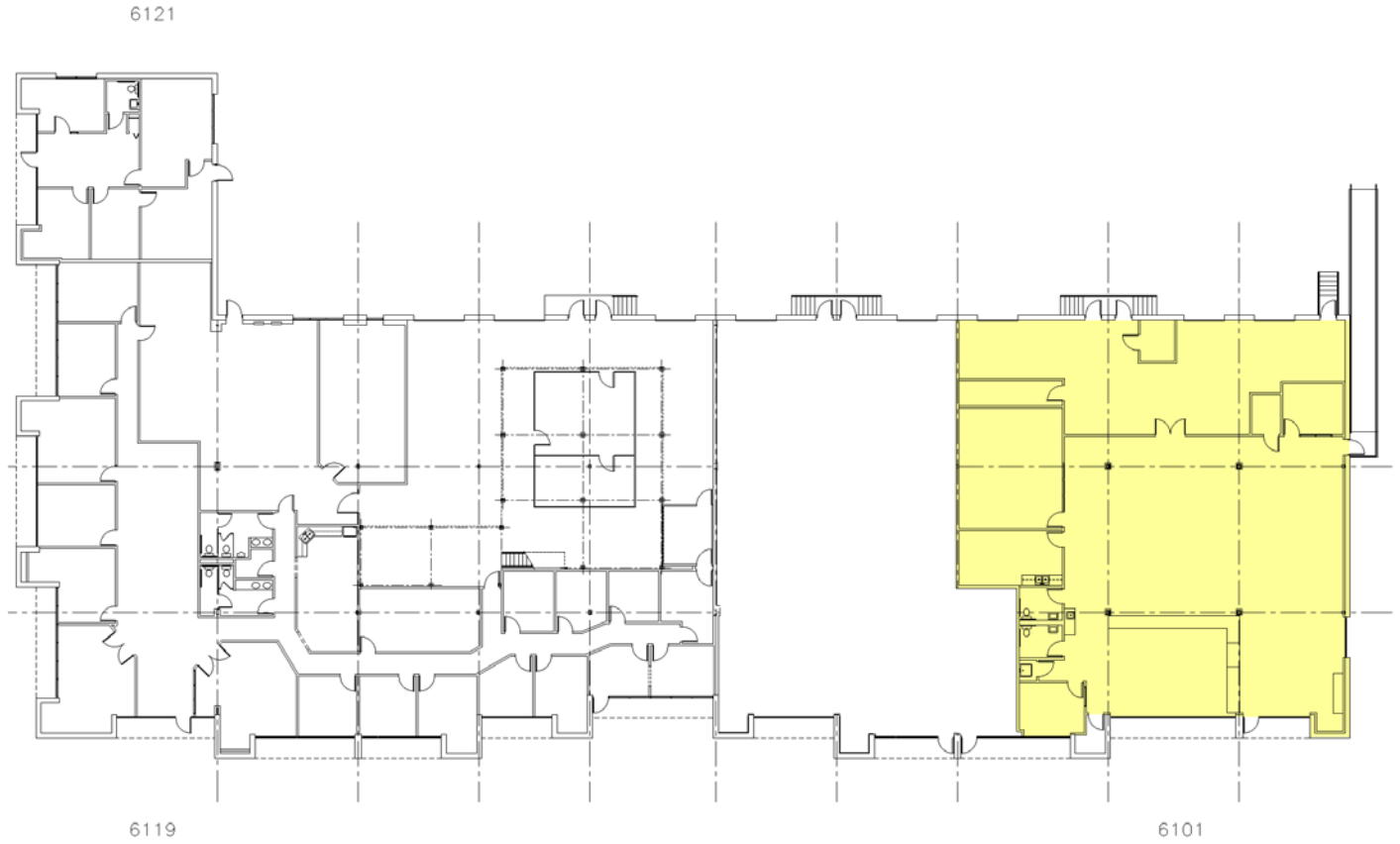
Executive Managing Director

t 816-268-4208

jhassler@nzimmer.com

NEWMARK
ZIMMER

Floor Plan



CONTACT

Mark C. Long, CRE, SIOR, CCIM, LEED AP

President and Chief Executive Officer

t 816-512-1011

mlong@nzimmer.com

nmrkzimmer.com

John F. Hassler, SIOR

Executive Managing Director

t 816-268-4208

jhassler@nzimmer.com