



For
Lease

Commercial Space

1850 HYMUS BOULEVARD
DORVAL (QC)

CBRE

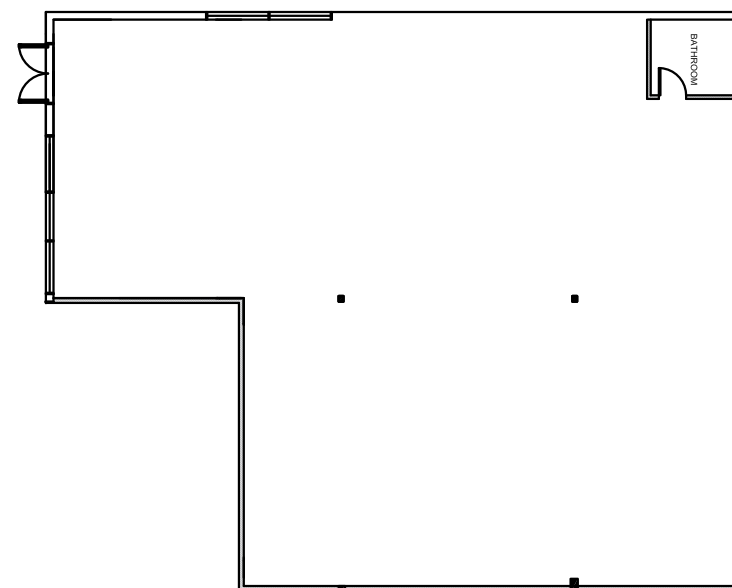
CBRE URBAN PROPERTIES | MONTREAL

Lease Terms

- + **Term**
5 - 10 years
- + **Area**
3,500 to 5,000 sq. ft.
- + **Net Rent**
\$18.50 per sq. ft.
- + **Additional Rent**
\$3.52 per sq. ft.
- + **Availability**
30-days notice

Floor Plan

3,500 to 5,000
SQ. FT.



Property Details



Commercial space located on the corner of Hymus Boulevard and Andre Avenue



16' ceiling height



Loading dock available



Drive indoor



Ideal for a showroom, storage space or car storage



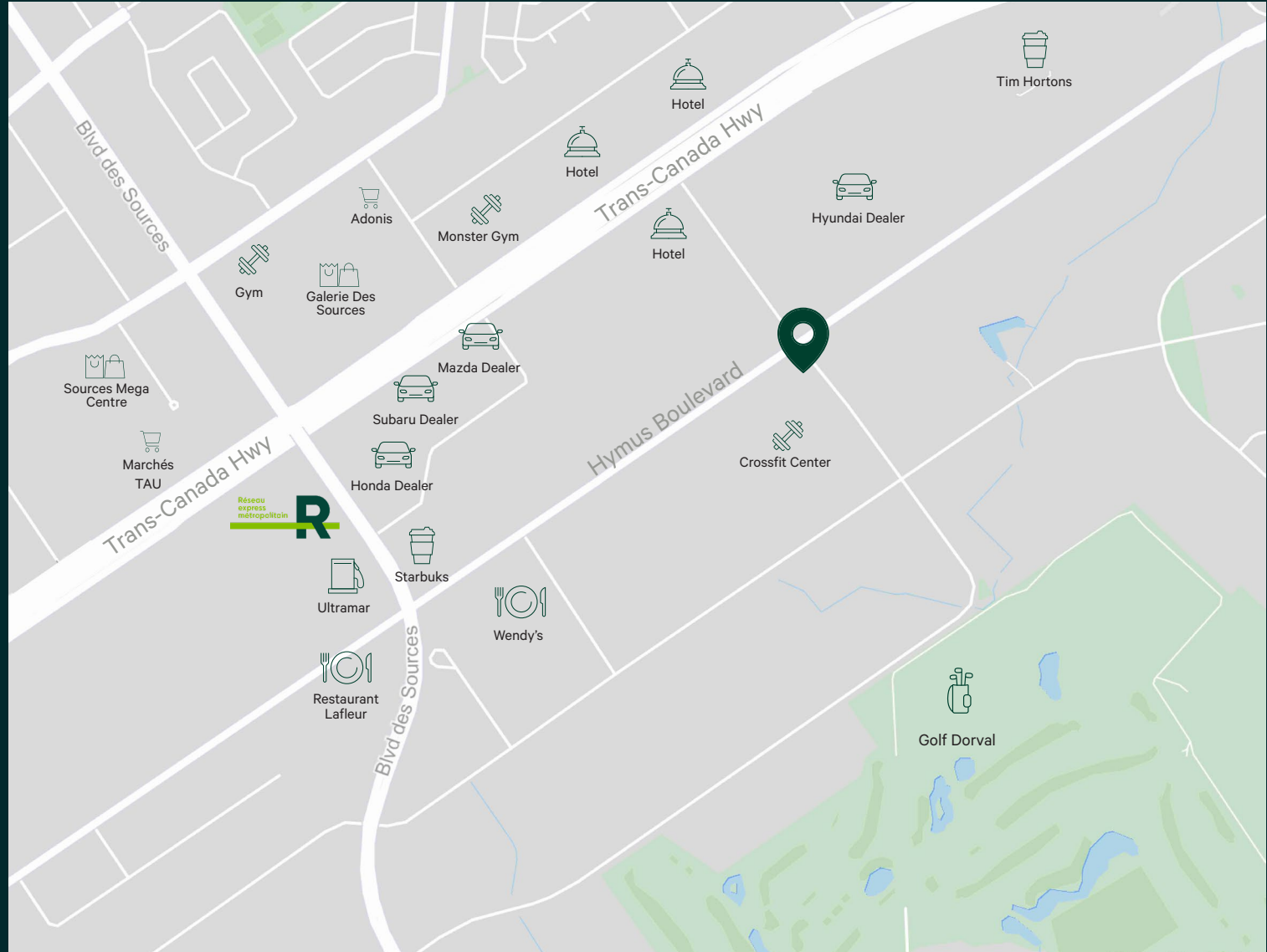
Location

Contact Us

Christopher Rundle
Vice President
Real Estate Broker
+1 514 375 0818
christopher.rundle@cbre.com

Bryan Greenberg
Associate Vice President
Real Estate Broker
+1 514 375 2507
bryan.greenberg@cbre.com

Amanda Angela Herbu
Associate
Commercial Real Estate Broker
+1 514 375 0456
amanda.herbu@cbre.com



CBRE Limited, Real Estate Agency | 1250 René-Lévesque Blvd West, Suite 2800 | Montréal, Québec H3B 4W8 | +1 514 849 6000 | www.cbre.ca

This disclaimer shall apply to CBRE Limited, Real Estate Agency, and to all other divisions of the Corporation; to include all employees and independent contractors ("CBRE"). The information set out herein, including, without limitation, any projections, images, opinions, assumptions and estimates obtained from third parties (the "Information") has not been verified by CBRE, and CBRE does not represent, warrant or guarantee the accuracy, correctness and completeness of the Information. CBRE does not accept or assume any responsibility or liability, direct or consequential, for the Information or the recipient's reliance upon the Information. The recipient of the Information should take such steps as the recipient may deem necessary to verify the Information prior to placing any reliance upon the Information. The Information may change and any property described in the Information may be withdrawn from the market at any time without notice or obligation to the recipient from CBRE. CBRE and the CBRE logo are the service marks of CBRE Limited and/or its affiliated or related companies in other countries. All other marks displayed on this document are the property of their respective owners. All Rights Reserved. Mapping Sources: Canadian Mapping Services canadamapping@cbre.com; DMTI Spatial, EnviroNics Analytics, Microsoft Bing, Google Earth.