



## Roller Dome Redevelopment

444 W Coliseum Blvd, Fort Wayne, IN 46805  
4515-4517 Industrial Rd, Fort Wayne, IN 46825

COMMERCIAL/INDUSTRIAL

FOR SALE

## Attractive Redevelopment Opportunity

Built in 1950, Roller Dome North has been a cherished establishment for Fort Wayne and surrounding residents. The area surrounding the Coliseum Blvd/Lima Rd intersection is one of Fort Wayne's most traveled as it leads to the several retail and industrial corridors. This listing includes the main Roller Dome North building, two additional warehouse buildings/lots, and an income-producing billboard. 4515 & 4517 Industrial Road buildings are currently being used as warehouses.

## Property Highlights

- ▶ 3 buildings totaling ±42,345 SF on 3.89 AC
- ▶ In established trade/retail area
- ▶ Leased billboard with rental income
- ▶ Multiple access points from Coliseum Blvd, Lima Road, Industrial Road, and Merkle Street
- ▶ Best used as commercial redevelopment
- ▶ **FOR SALE: \$3,724,380**

### BARRY STURGES

Chief Executive Officer  
260 424 8448  
barry.sturges@sturgespg.com

### JOHN CAFFRAY

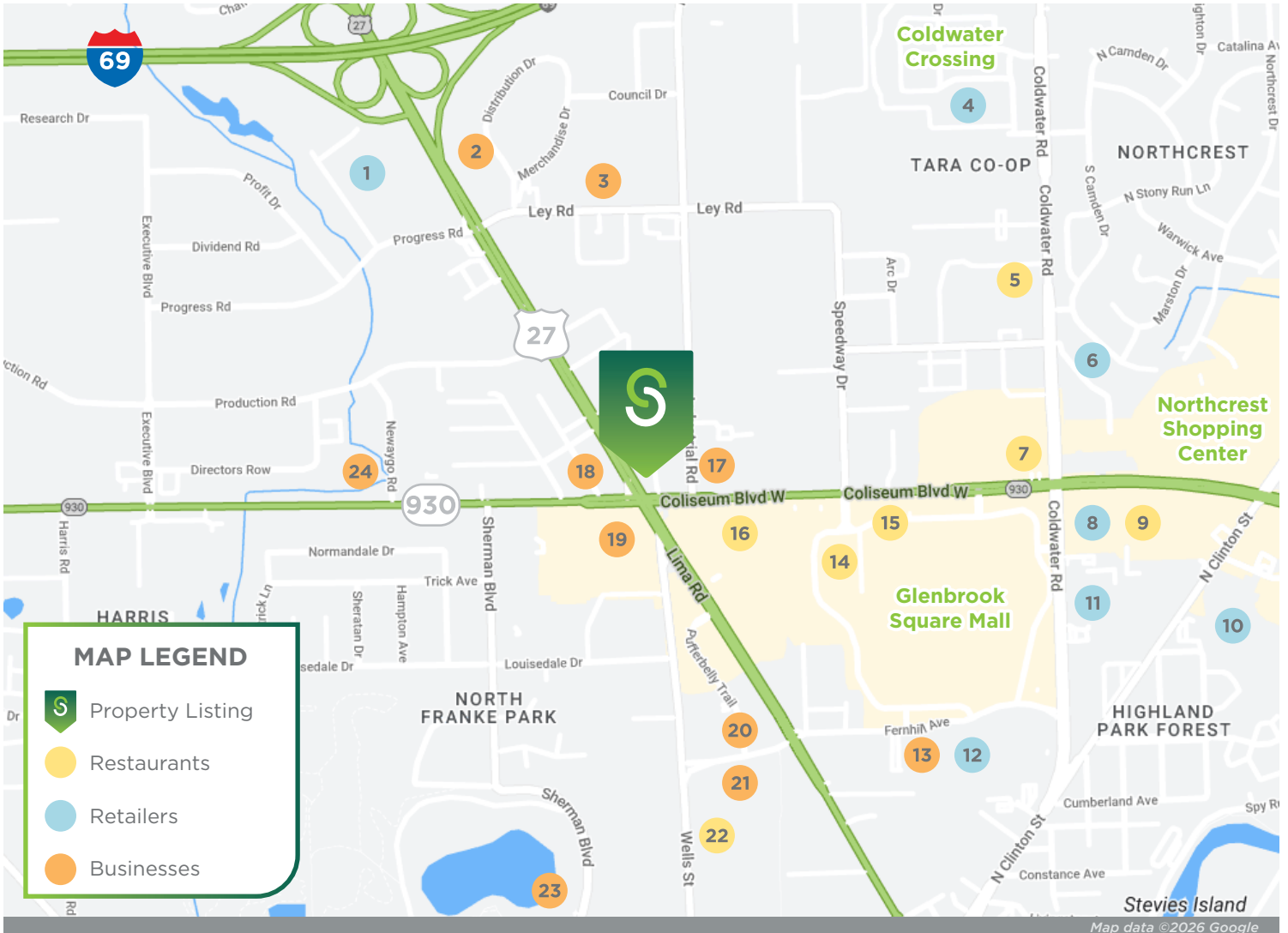
Vice President of Brokerage  
260 424 8448  
john.caffray@sturgespg.com



## Roller Dome Redevelopment

444 W Coliseum Blvd, Fort Wayne, IN 46805

4515-4517 Industrial Rd, Fort Wayne, IN 46825



### Excellent Location

Sitting at the corner of a major Fort Wayne intersection, this listing is surrounded by several shopping centers, national retailers, restaurants, and attractions, making it an ideal location for redevelopment.

- |                                    |  |   |
|------------------------------------|--|---|
| <b>1.</b> Costco                   | <b>9.</b> Panera Bread                 | <b>17.</b> DriveTime Used Cars            |
| <b>2.</b> Tru by Hilton            | <b>10.</b> Kroger                      | <b>18.</b> Zeigler Subaru of Fort Wayne   |
| <b>3.</b> Combat Ops Entertainment | <b>11.</b> Tire Barn                   | <b>19.</b> Evans Toyota                   |
| <b>4.</b> Walmart Supercenter      | <b>12.</b> Target                      | <b>20.</b> SportONE Fieldhouse & Icehouse |
| <b>5.</b> Red Lobster              | <b>13.</b> Lazer X (Laser Tag)         | <b>21.</b> Sky Zone Trampoline Park       |
| <b>6.</b> Aldi                     | <b>14.</b> Portillo's                  | <b>22.</b> 2Toms Brewing Company          |
| <b>7.</b> IHOP                     | <b>15.</b> BJ's Restaurant & Brewhouse | <b>23.</b> Fort Wayne Children's Zoo      |
| <b>8.</b> Fresh Thyme Market       | <b>16.</b> Crumbl Cookies              | <b>24.</b> Ultrazone Family Entertainment |

#### BARRY STURGES

Chief Executive Officer  
260 424 8448  
barry.sturges@sturgespg.com

#### JOHN CAFFRAY

Vice President of Brokerage  
260 424 8448  
john.caffray@sturgespg.com



**Roller Dome Redevelopment**  
444 W Coliseum Blvd, Fort Wayne, IN 46805  
4515-4517 Industrial Rd, Fort Wayne, IN 46825

## 444 W Coliseum Blvd



23,562 SF on 1.96 AC

## 4515 Industrial Rd



8,425 SF on 0.41 AC

### BARRY STURGES

Chief Executive Officer  
260 424 8448  
barry.sturges@sturgespg.com

### JOHN CAFFRAY

Vice President of Brokerage  
260 424 8448  
john.caffray@sturgespg.com

## 4517 Industrial Rd

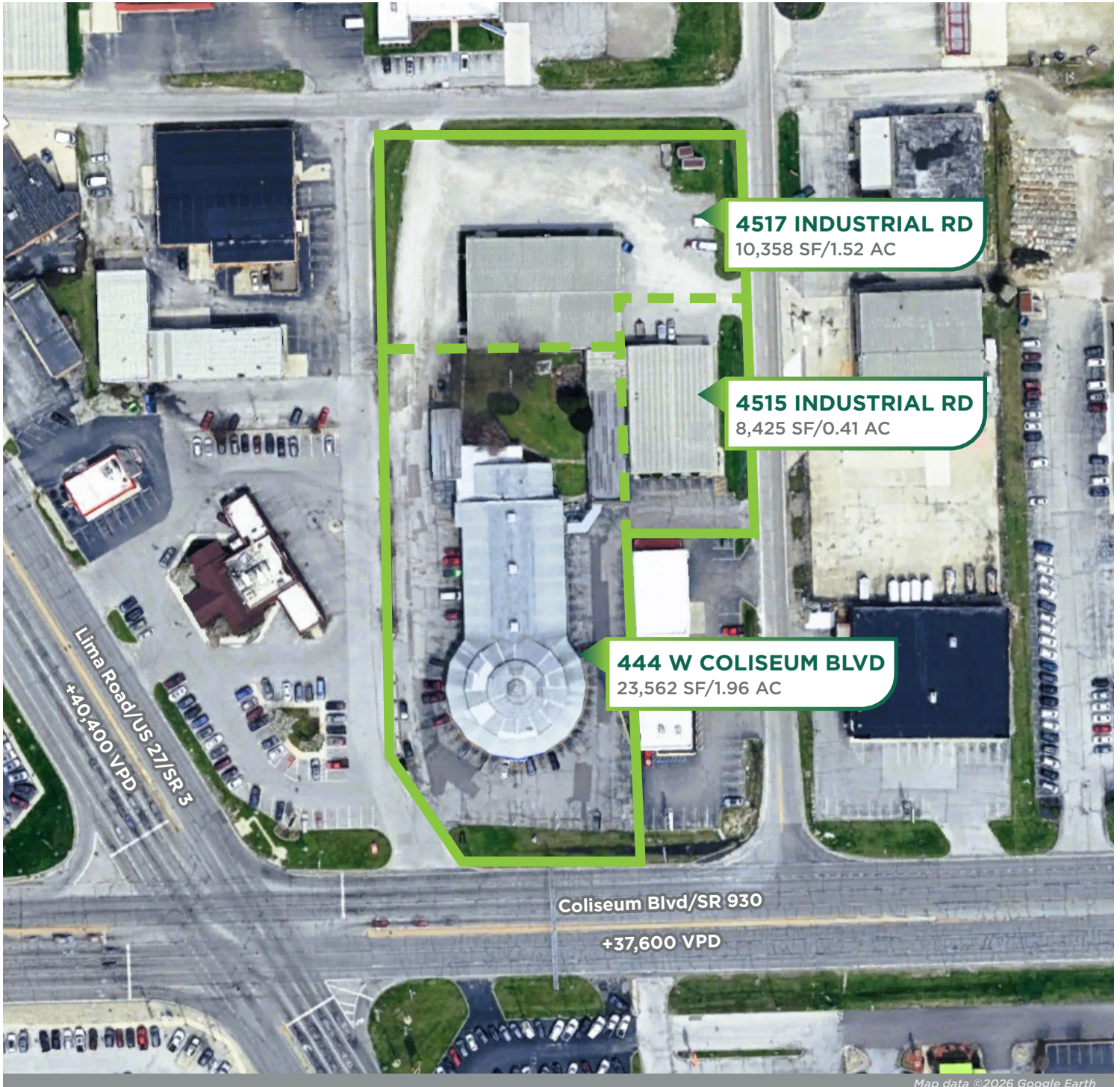


10,358 SF on 1.52 AC



**Roller Dome Redevelopment**  
444 W Coliseum Blvd, Fort Wayne, IN 46805  
4515-4517 Industrial Rd, Fort Wayne, IN 46825

## Site Plan

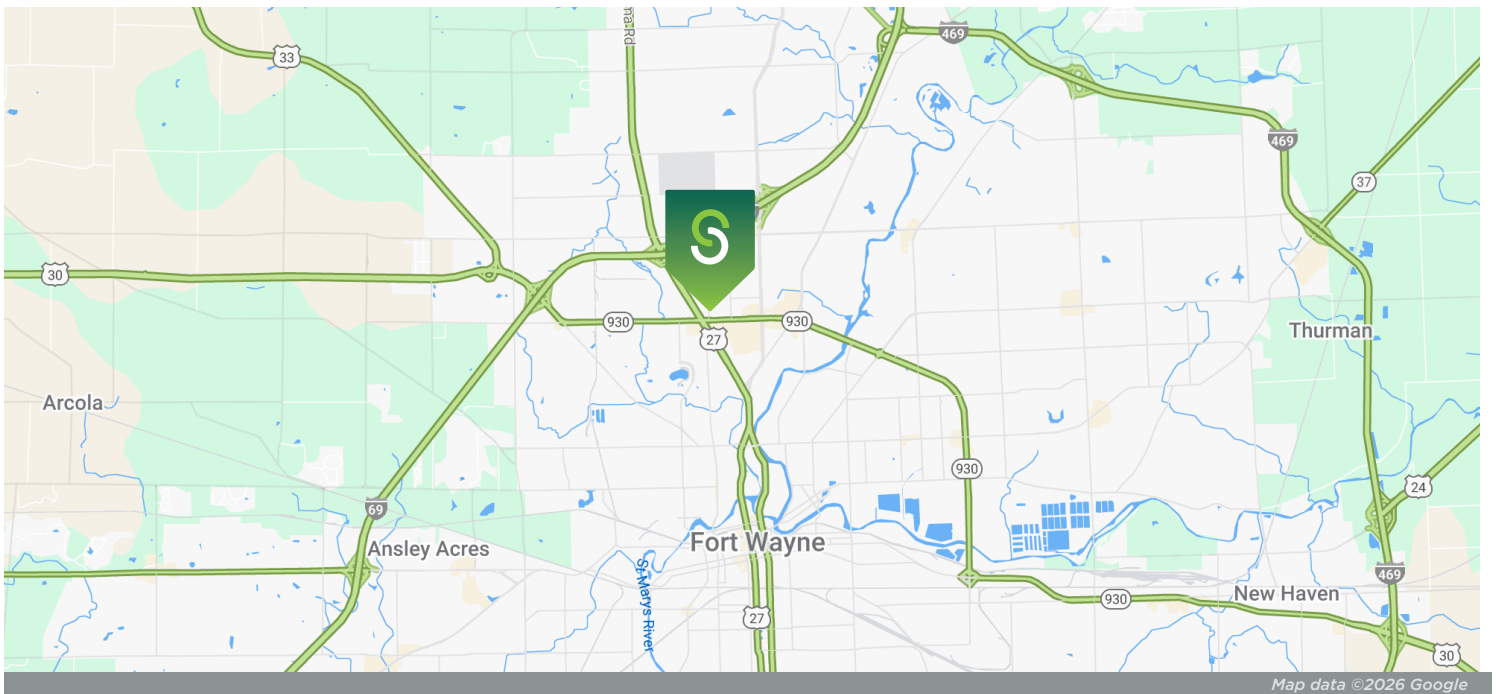


**BARRY STURGES**  
Chief Executive Officer  
260 424 8448  
barry.sturges@sturgespg.com

**JOHN CAFFRAY**  
Vice President of Brokerage  
260 424 8448  
john.caffray@sturgespg.com



**Roller Dome Redevelopment**  
 444 W Coliseum Blvd, Fort Wayne, IN 46805  
 4515-4517 Industrial Rd, Fort Wayne, IN 46825



© 2026 Sturges, LLC. This information has been obtained from sources believed reliable. We have not verified it and make no guarantee, warranty, or representation about it. Any projections, opinions, assumptions, or estimates used are for example only and do not represent the current or future performance of the property. You and your advisors should conduct a careful, independent investigation of the property to determine to your satisfaction the suitability of the property for your needs.

Photos herein are the property of their respective owners and use of these images without the express written consent of the owner is prohibited. Maps used herein are attained via Snazzy Maps, Google Maps, and/or Google Earth, and are therefore the property of Google.

**BARRY STURGES**  
 Chief Executive Officer  
 260 424 8448  
 barry.sturges@sturgespg.com

**JOHN CAFFRAY**  
 Vice President of Brokerage  
 260 424 8448  
 john.caffray@sturgespg.com



## Roller Dome Redevelopment

444 W Coliseum Blvd, Fort Wayne, IN 46805

4515-4517 Industrial Rd, Fort Wayne, IN 46825

### PROPERTY INFORMATION

Addresses	444 W Coliseum Blvd, Fort Wayne, IN 46805 4515-4517 Industrial Rd, Fort Wayne, IN 46825
County	Allen
Township	Washington
Parcel Numbers	02-07-23-377-001.000-073 02-07-23-377-002.000-073 02-07-23-377-003.000-073



### SALE INFORMATION

Price	\$3,724,380
Terms	Cash at close

### SITE DATA

Total Site Acreage	3.89 AC
Total SF - Land	±169,448 SF
Total SF - Buildings	42,345 SF
Zoning	I3 - Heavy Industrial
Nearest Interstate	I-69, 1 mile
Traffic Count	Coliseum/US 930 - 37,600 VPD Lima/US 27 - 40,400 VPD Industrial Rd - 3,900 VPD
Parking	Asphalt lots

### UTILITIES

Electric Provider	AEP
Natural Gas Provider	NIPSCO
Water & Sewer Provider	City of Fort Wayne
High Speed Data	Available

### BUILDING INFORMATION

	444 W Coliseum Blvd	4515 Industrial Road	4517 Industrial Road
Property Type	Commercial	Industrial	Industrial
Zoning	I3 - Heavy Industrial	I3 - Heavy Industrial	I3 - Heavy Industrial
Total Building SF	23,562 SF	8,425 SF	10,358 SF
Total Acreage	1.96 AC	0.41 AC	1.52 AC
Year Built	1950	1972	1985
Construction Type	Masonry	Pre-Engineered Steel	Pre-Engineered Steel
Roof	Asphalt Single	Metal	Steel
Current Use	Roller Dome	Shop/Warehouse	Distribution Warehouse
Signage	Pylon, Façade	Façade	Façade

### ADDITIONAL INFORMATION

- Location benefits from established area, heavily traveled thoroughfares, and nearby signalized intersection.
- Includes leased billboard with rental income.
- Ideal lot for commercial redevelopment.

#### BARRY STURGES

Chief Executive Officer  
260 424 8448  
barry.sturges@sturgespg.com

#### JOHN CAFFRAY

Vice President of Brokerage  
260 424 8448  
john.caffray@sturgespg.com