

FLOOR PLAN  
1/4/00

\* NOT FOR CONSTRUCTION - 90% COMPLETE

SHILLINGTON BRANCH

2251 LANCASTER AVE, SHILLINGTON, PA 19607

FULTON BANK

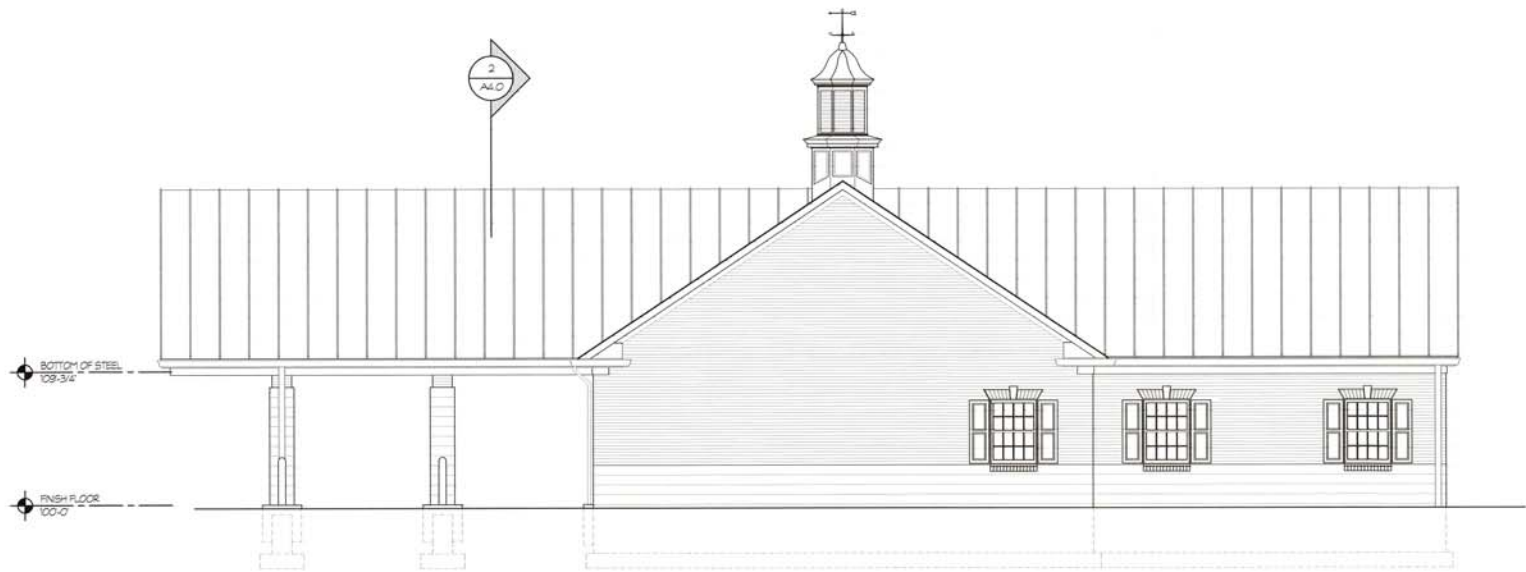
ONE PENN SQUARE, LANCASTER, PA 17602

Fulton Financial Corporation

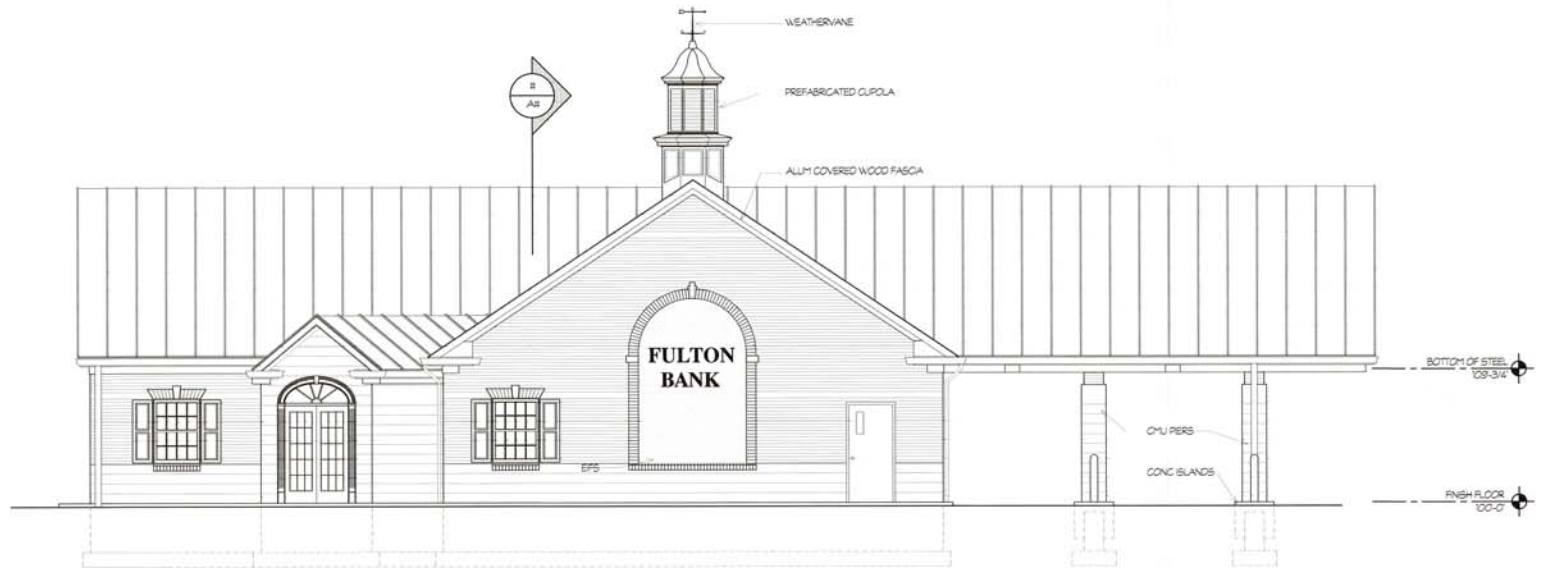
Paul David Cowan R.A.  
I. Norman Gerlach R.A.  
Corporate Architects  
One Penn Square, Lancaster, PA 17604  
TEL: 717-291-2412 FAX: 717-295-2467

FLOOR PLAN

A2



ELEVATION A  
1  
A 3



ELEVATION B  
2  
A 3

\* NOT FOR CONSTRUCTION - 90% COMPLETE

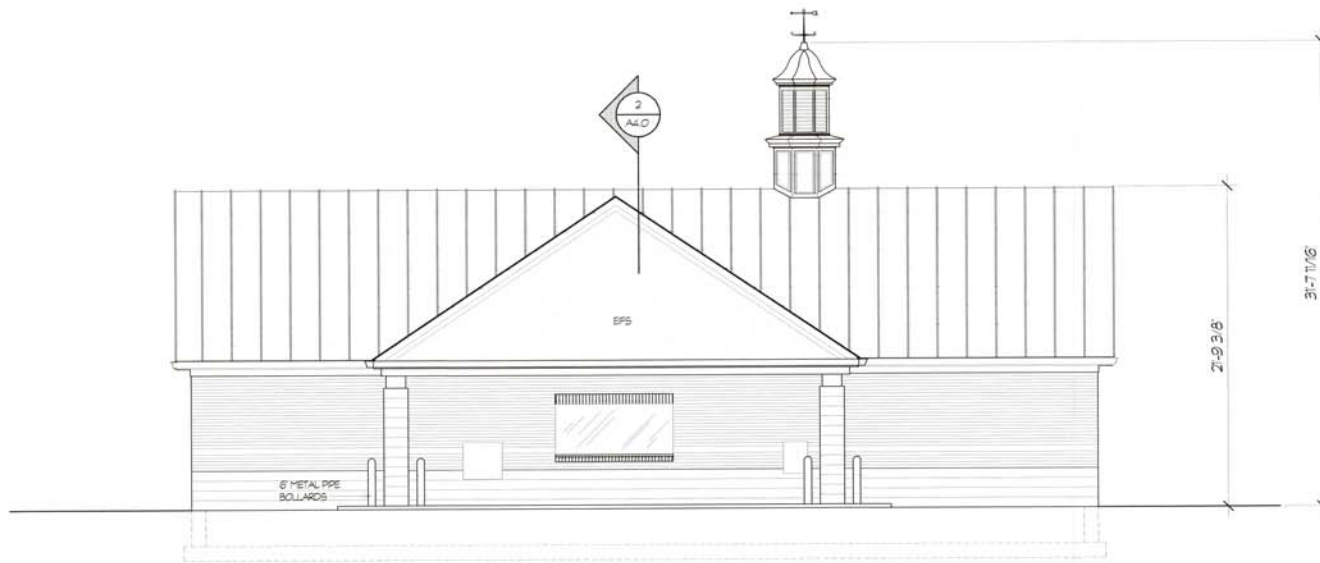
**Fulton Financial Corporation**  
 Paul David Cowan R.A.  
 I. Norman Gerlach R.A.  
 Corporate Architects  
 One Penn Square, Lancaster, PA 17604  
 TEL: 717-291-2412 FAX: 717-295-2467

**SHILLINGTON BRANCH**  
 2251 LANCASTER AVE, SHILLINGTON, PA 19607  
**FULTON BANK**  
 ONE PENN SQUARE, LANCASTER, PA 17602

DATE	DESCRIPTION

DATE: 02/09/07  
 DRAWN BY: [blank]  
 CHECKED BY: [blank]  
 ELEVATIONS

Sheet  
**A 3**



ELEVATION C  
1/4\"/>



ELEVATION D  
1/4\"/>

\* NOT FOR CONSTRUCTION - 90% COMPLETE

**Fulton Financial Corporation**  
 Paul David Cowan R.A.  
 I. Norman Gerlach R.A.  
 Corporate Architects  
 One Penn Square  
 Lancaster, PA 17604  
 TEL: 717-291-2412 FAX: 717-295-2467

**SHILLINGTON BRANCH**  
 2251 LANCASTER AVE. SHILLINGTON, PA 19607

**FULTON BANK**  
 ONE PENN SQUARE, LANCASTER, PA 17602

Project No.	2251-01
Date	08-26-11
Drawn By	
Title	

ELEVATIONS

Sheet:

**A 4**