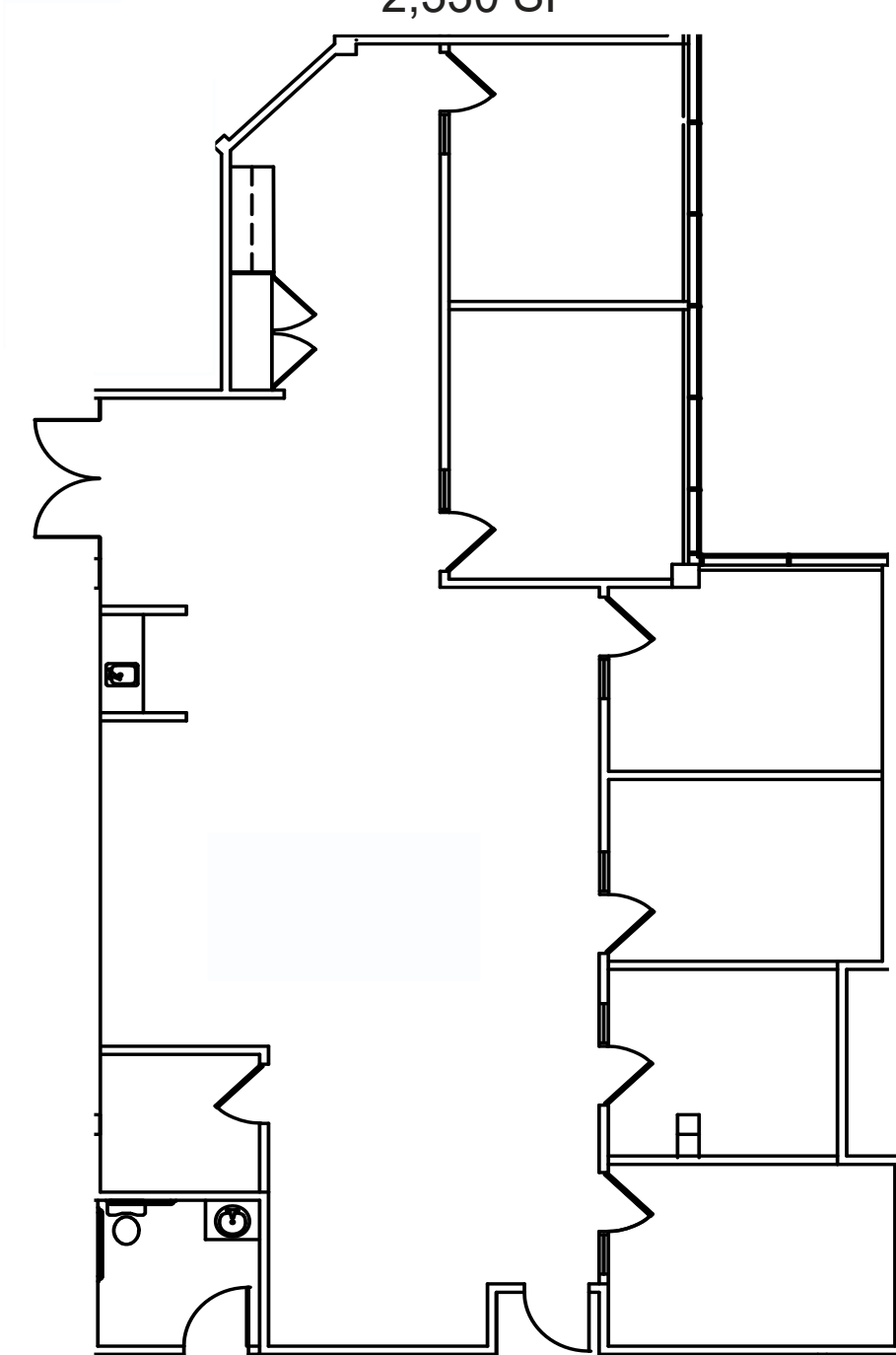


# Two Broadway Executive Park

205 NW 63rd St, Oklahoma City, OK 73116

## Suite 325 2,330 SF



**Call Nick Bentley 405.408.5428 or Ian Sioux 405.659.6782**

[nbentley@wigginprop.com](mailto:nbentley@wigginprop.com) | [iansioux@wigginprop.com](mailto:iansioux@wigginprop.com)