

MAJOR PRICE IMPROVEMENT! \$2,200,000

FIELDS & IVY BREWING COMPANY

706 E 23RD STREET, LAWRENCE, KS 66048



PROPERTY FEATURES

- 9,740 SQFT Brewery located in a vibrant college town
- Great opportunity for growth with new ownership
- Multiple revenue streams: on site tap room, restaurant/dining experiences, outdoor beer garden, packaged to go beer and brewery distribution with beer in over 300+ bars & liquor stores
- Growth potential for up to approx 15,000 barrels a year
- Community & cultural anchor in Lawrence
- Major remodel in 2018-2019



THE THOME TEAM



913.548.8700

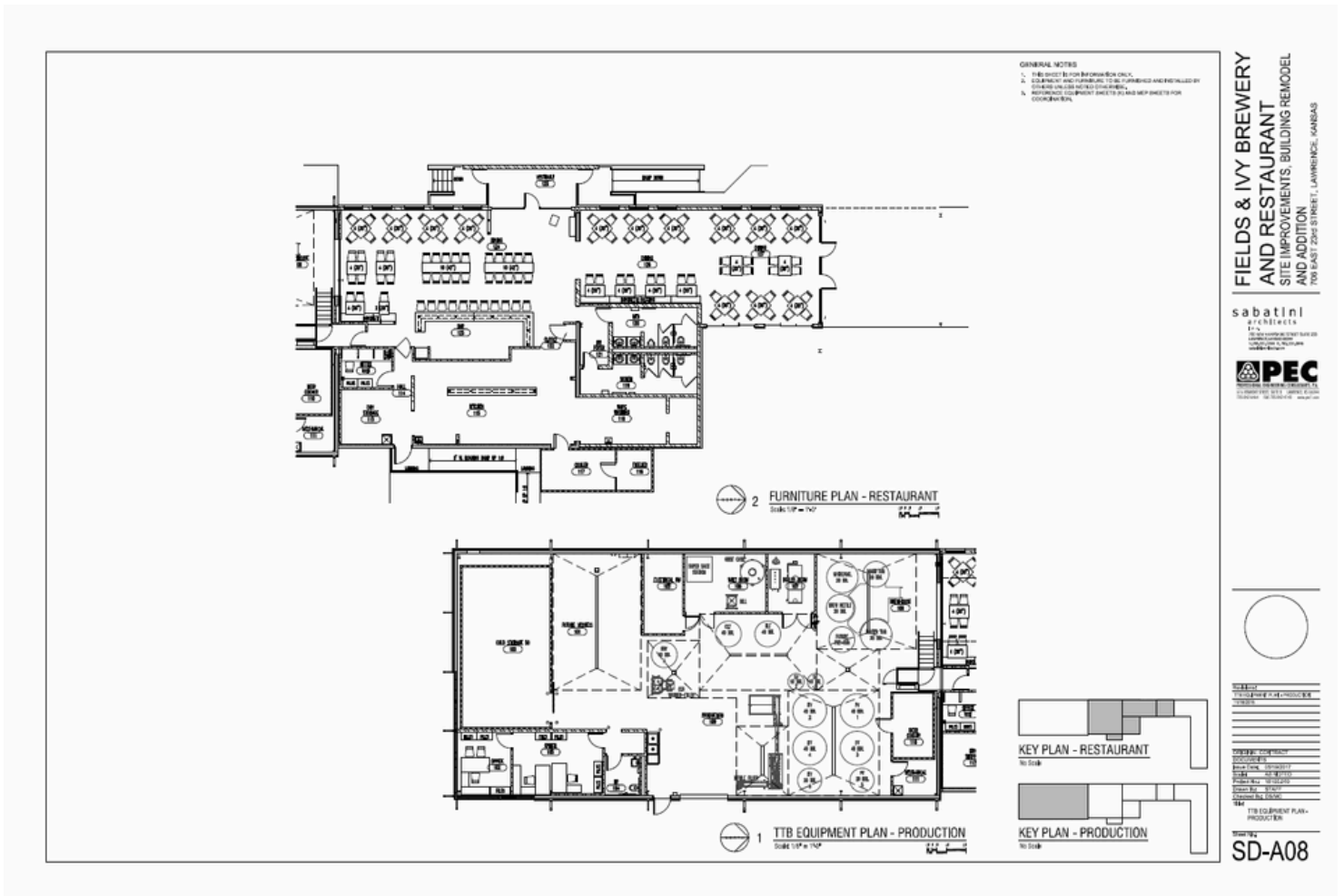


JThome@ReeceCommercial.com

FOR SALE

FIELDS & IVY BREWERY COMPANY

706 E 23RD STREET, LAWRENCE, KS 66048



THE THOME TEAM



913.548.8700



JThome@ReeceCommercial.com

FOR SALE

FIELDS & IVY BREWING COMPANY

706 E 23RD STREET, LAWRENCE, KS 66048



THE THOME TEAM



913.548.8700



JThome@ReeceCommercial.com

FOR SALE

FIELDS & IVY BREWING COMPANY

706 E 23RD STREET, LAWRENCE, KS 66048



THE THOME TEAM



913.548.8700



JThome@ReeceCommercial.com

FOR SALE

FIELDS & IVY BREWING COMPANY

706 E 23RD STREET, LAWRENCE, KS 66048



THE THOME TEAM



913.548.8700



JThome@ReeceCommercial.com

FOR SALE

FIELDS & IVY BREWING COMPANY

706 E 23RD STREET, LAWRENCE, KS 66048



THE THOME TEAM



913.548.8700



JThome@ReeceCommercial.com

FOR SALE

FIELDS & IVY BREWING COMPANY

706 E 23RD STREET, LAWRENCE, KS 66048



THE THOME TEAM



913.548.8700



JThome@ReeceCommercial.com