

FOR SALE

4400 Pinson Valley Pkwy
Birmingham, AL 35215



Lightpoint

A Healthcare Real Estate Firm



Offering Summary

- Free-Standing Office Building for an Owner-User
- Price: \$299,000
- Building Size: 3,342sf
- Land Size: 2.19 acres

Property Highlights

- Former Bank converted into an office building
- Three spacious offices with two open work spaces
- Full Kitchen/break area with two bathrooms
- Great visibility and easy access along Pinson Valley
- Fenced in back parking lot with ample parking



Craig Millard

c: 317.752.8509

e: craig@lightpointcre.com



FOR SALE

4400 Pinson Valley Pkwy
Birmingham, AL 35215



Lightpoint

A Healthcare Real Estate Firm



Property Highlights

- Perfect for office and service operations
- Turn-key space ready for your business
- High-traffic corridor with ~20,000 VPD
- Room for expansion or additional development
- Zoned C1
- Owner-user or investment opportunity

Craig Millard | c: 317.752.8509 | e: craig@lightpointcre.com

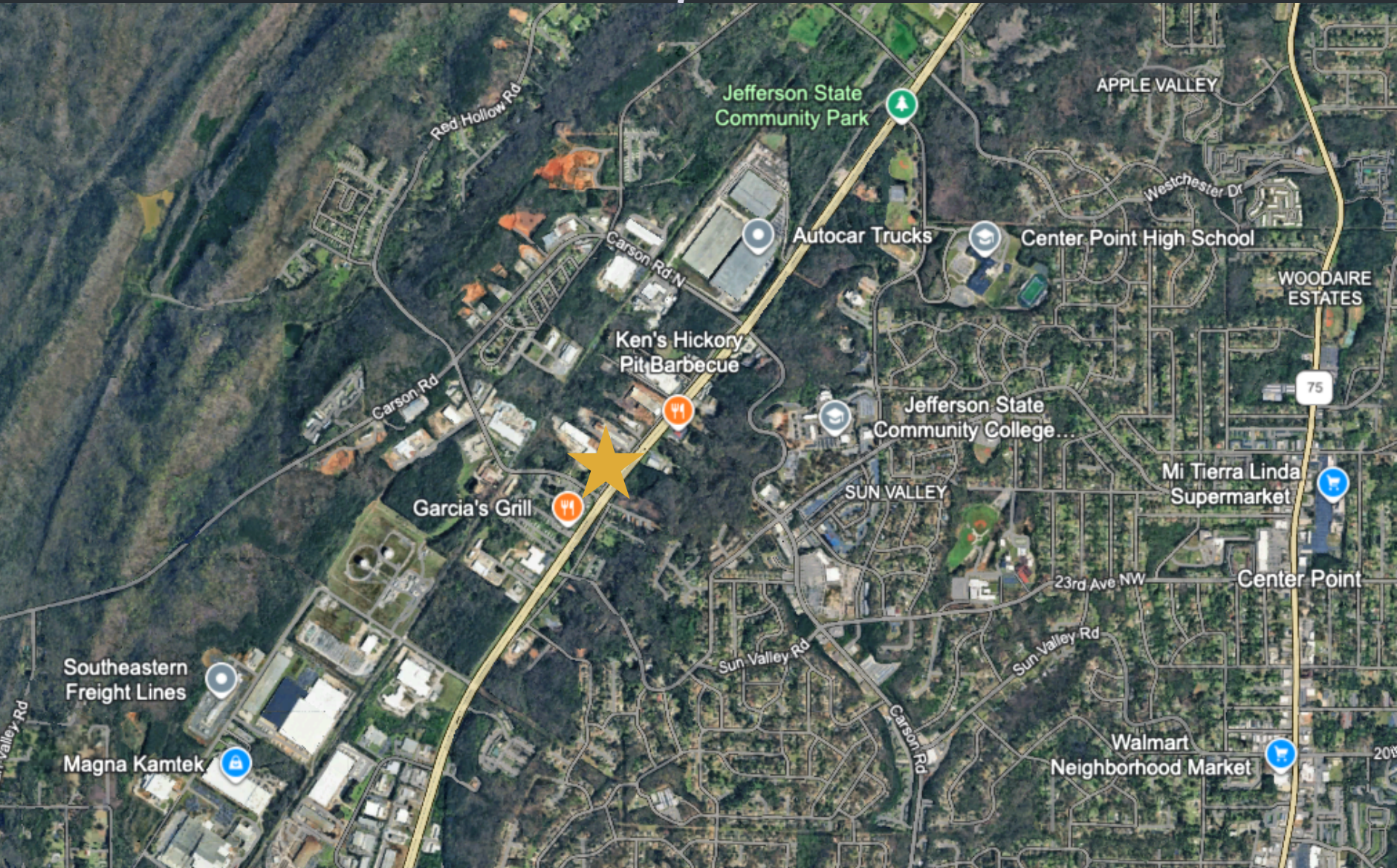
FOR SALE

4400 Pinson Valley Pkwy
Birmingham, AL 35215



Lightpoint

A Healthcare Real Estate Firm



Craig Millard | c: 317.752.8509 | e: craig@lightpointcre.com